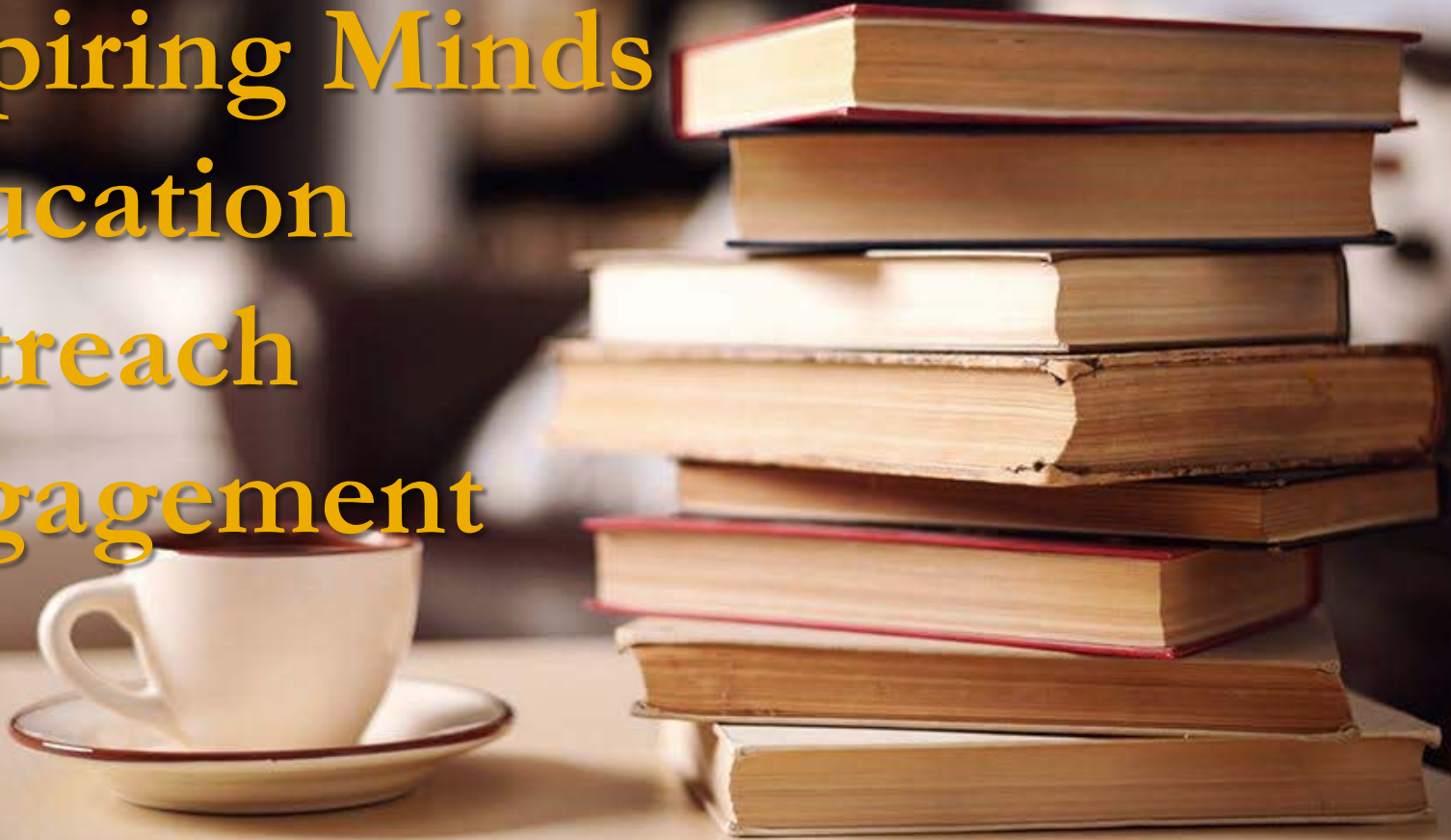


Lifelong Learning at MSU



Member-led
Community of Learners
Inspiring Minds
Education
Outreach
Engagement



LLCs Nationwide

Winter 2018

Registration opening dates
are listed on the back cover!

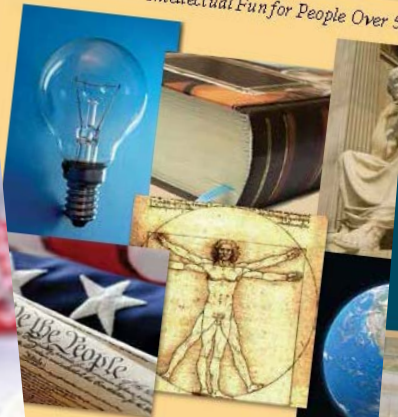


OSHER
LIFELONG
LEARNING
INSTITUTE

USM Osher Lifelong Learning Institute

Fall 2017
SAGE

Intellectual Fun for People Over 50



ome Explore New Dimensions
A dynamic approach to learning
history, science, the arts, and current



Osher Lifelong Learning Institute
Classes & Travel for Adults 50+ | svsu.edu/olli | (989) 964-4475

USM

Osher Lifelong Learning Institute

Winter 2018
Jan. 9 through Feb. 15

CLASS SCHEDULE

seek.
learn.
discover.
grow.

OSHER
LIFELONG
LEARNING
INSTITUTE
OLLI

Sioux Falls, Brookings
and Vermillion

www.olliuc.org

OLLI PHONE NUMBERS:
(605) 274-9528 or 274-9529
for Sioux Falls and Vermillion

(605) 688-4077 Brookings

Chamberlain course catalog sent separately

WINTER 2018
JANUARY - FEBRUARY



Regional LLCs

Oklahoma State University

Texas Tech University

University of North Texas

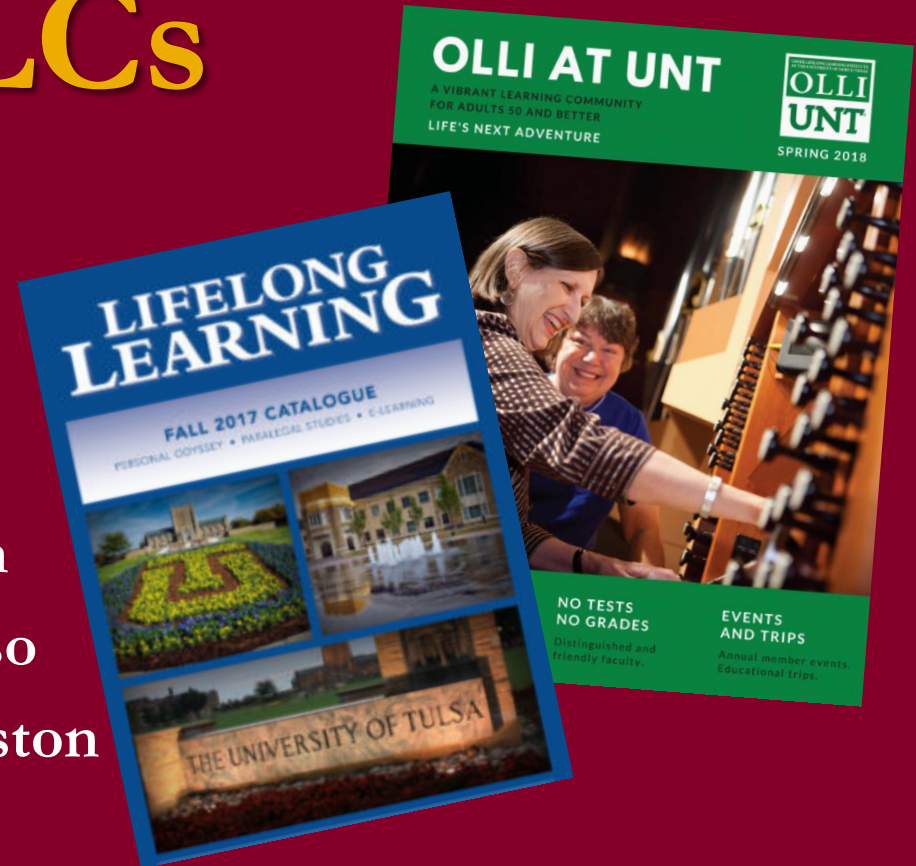
University of Oklahoma

University of Texas at Austin

University of Texas at El Paso

University of Texas at Galveston

University of Tulsa



Membership Benefits

Courses

Film Series

Workshops

Campus Access

Educational Travel

Brown Bag Lectures

Special Interest Groups

Special Members-Only Events



Types of Classes

Health & Fitness

History

Language & Literature

Life Transition

Math / Science / Technology

Philosophy & Religion

Social Sciences

Personal Development

Visual & Performing Arts



Aspiration: UNC-Asheville



Building Relationships

Extends MSU's Public Liberal Arts Mission

Contributes to Economic Development

Community Engagement

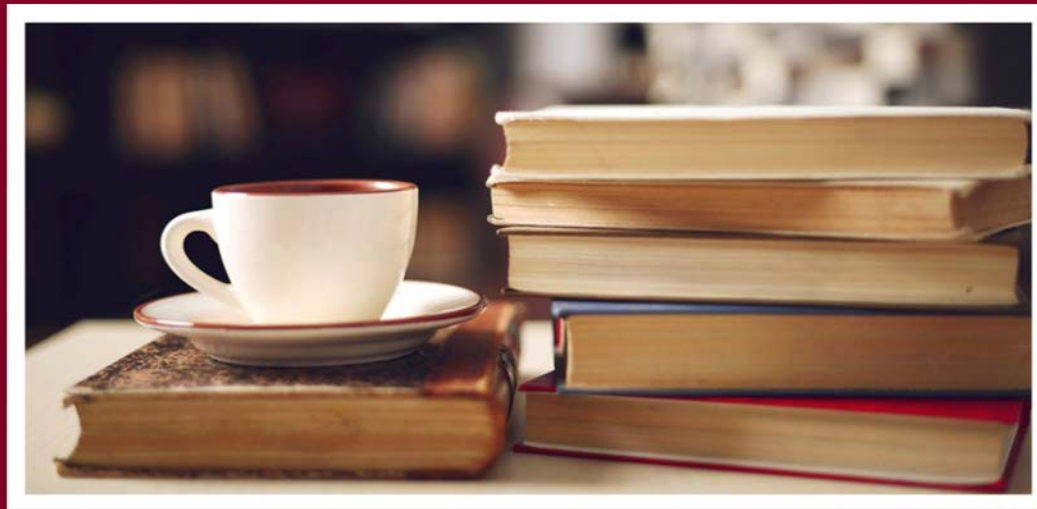
Donor Development

Point of Pride



Mission Statement

Midwestern State University's Lifelong Learning Center is a member-driven community of learners dedicated to inspiring and enriching the minds and spirits of Texomans over the age of 50.



A stack of several books is shown, with a white cup and saucer on the left. The text is overlaid on the books.

Lifelong Learning

at MSU

Thank you!