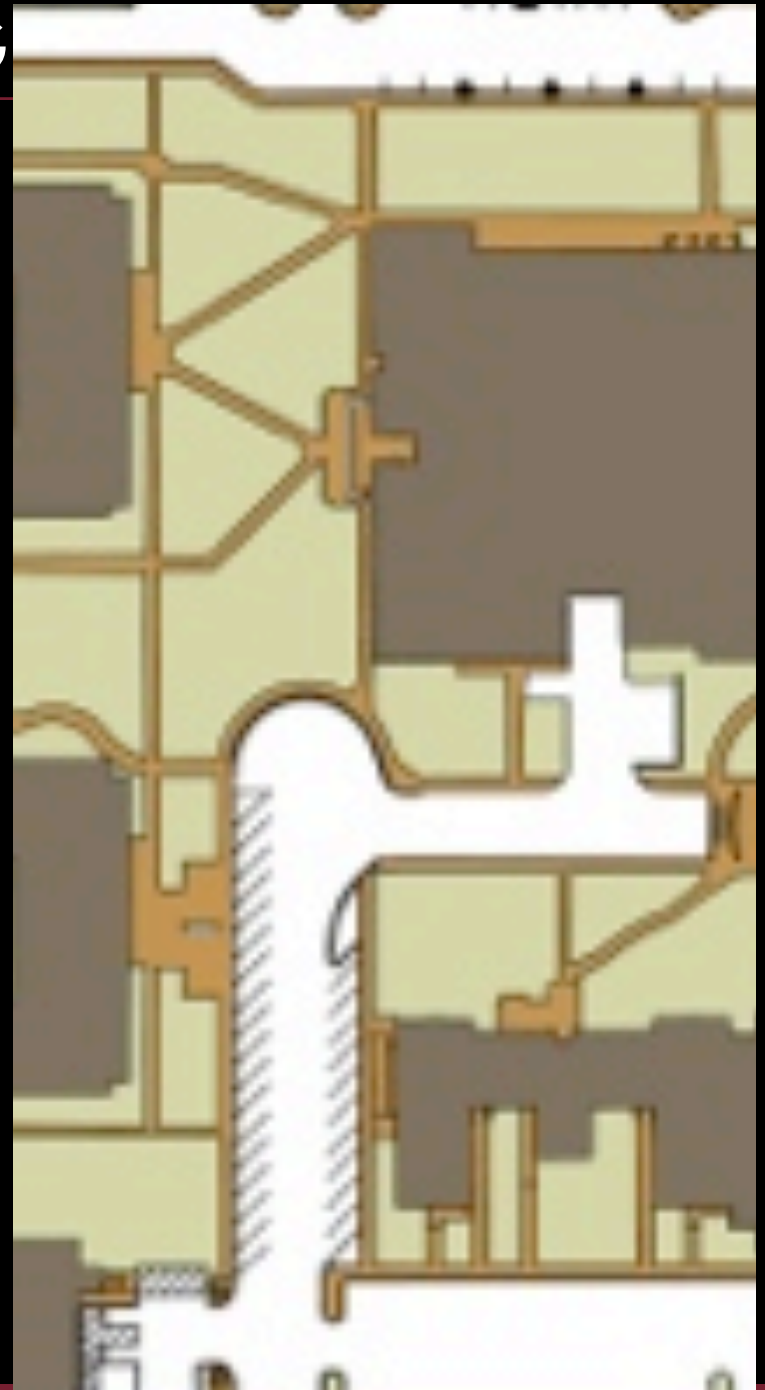


MUSTANGS WALK - EXISTING



IN ORDER TO KEEP COST OF LANDSCAPING
PROJECT TO A MINIMUM, WE KEPT AS MUCH OF
THE EXISTING HARDSCAPE AS POSSIBLE



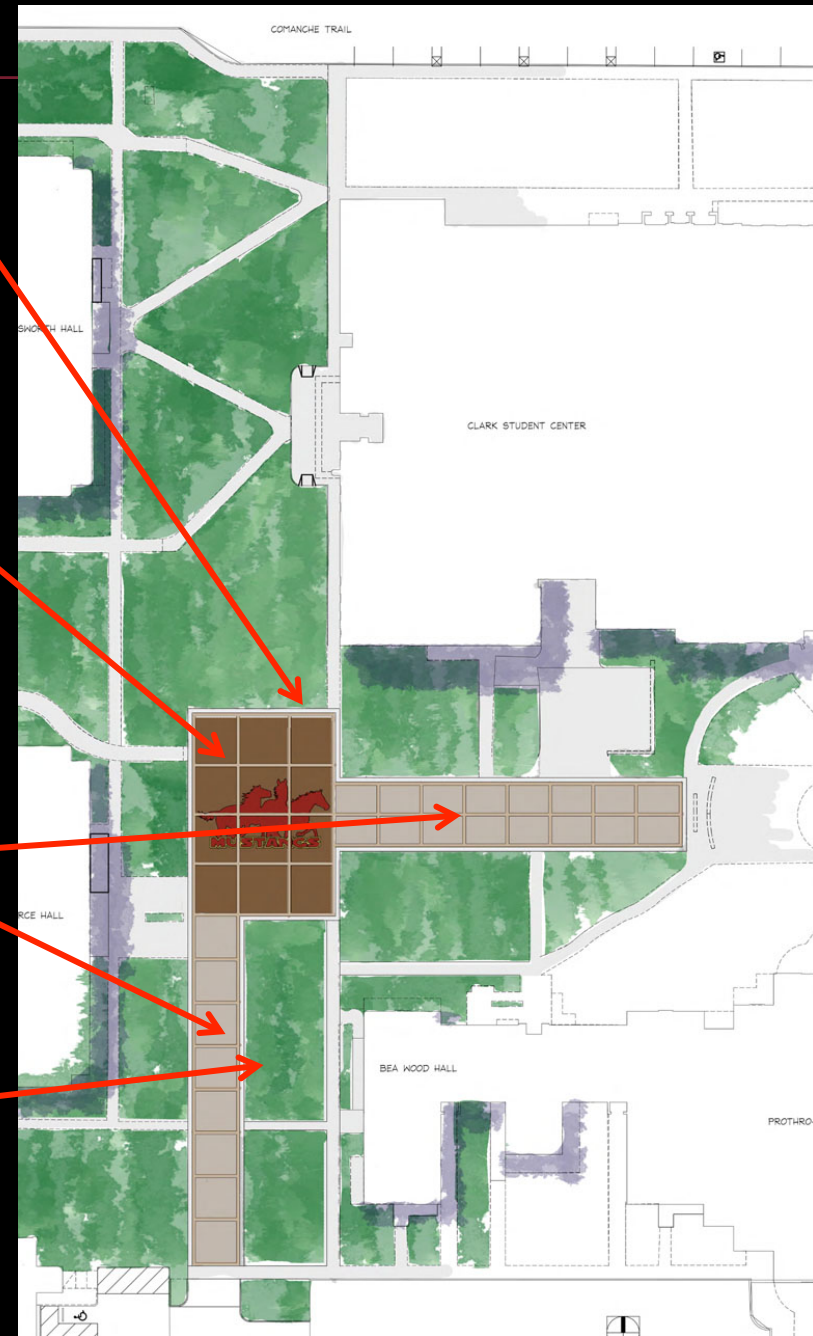
MUSTANGS WALK- PH 1

Connect existing sidewalks with new sidewalks

Vehicle turn-a-around area to be concrete infill with darker colored concrete pavers

New sidewalks to be concrete infill with light colored concrete pavers

Add grass and crosswalks on east side of Mustangs Walk to Beawood



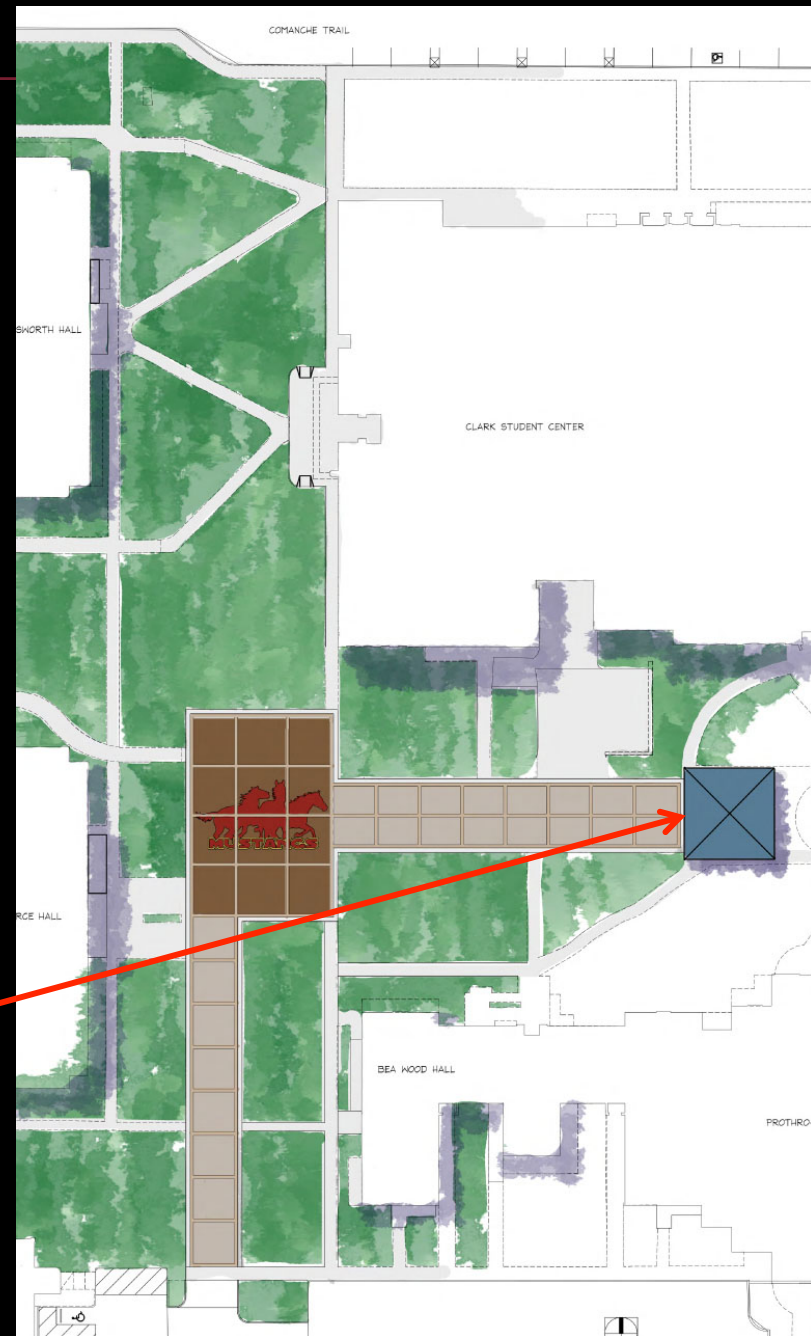
MUSTANGS WALK- PH 2



Pavilion at Texas A&M Kingsville

Add pavilion at stage location

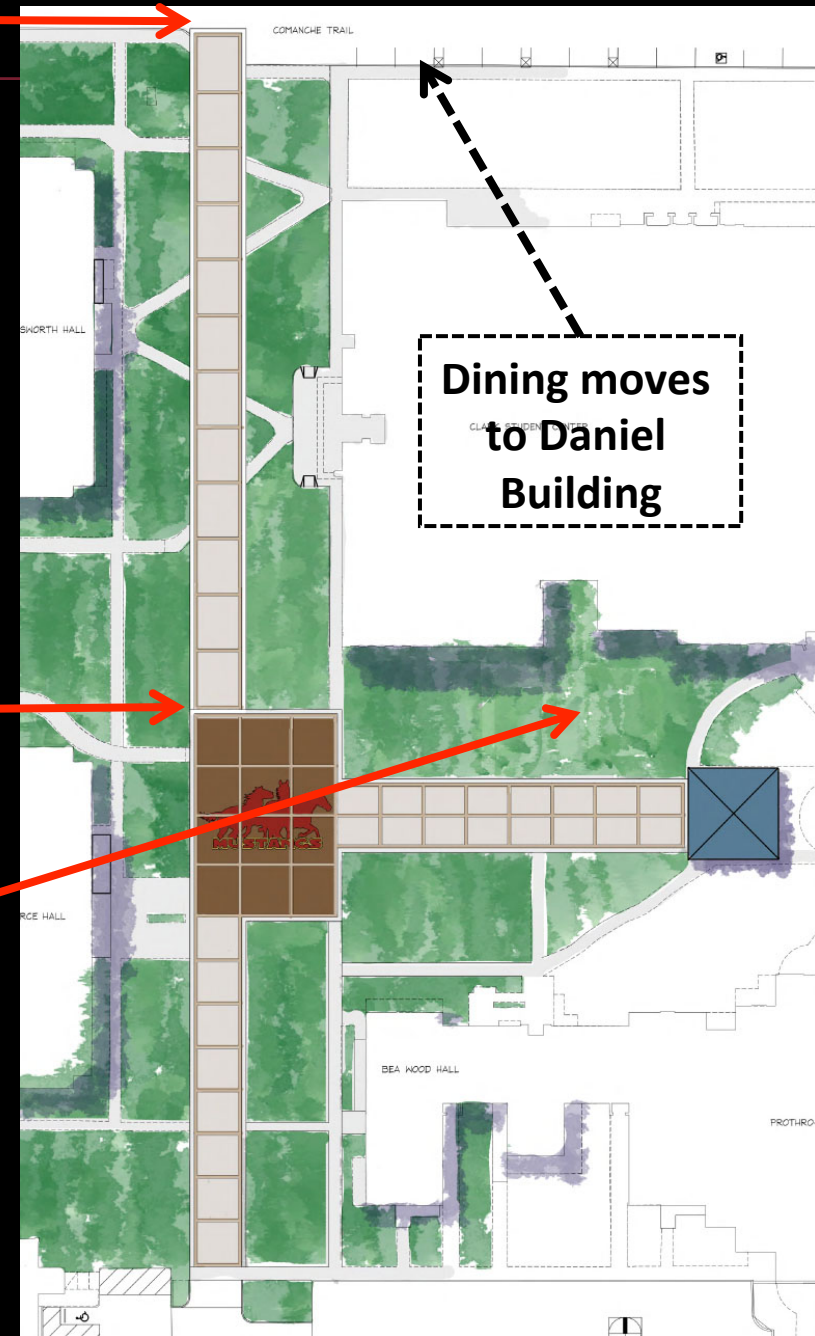
Remove brick wall behind stage to create wider pedestrian walkway similar to Mustangs Walk



MUSTANGS WALK- PH 3

Extend Mustangs Walk / Fire Lane
to Comanche Drive

Remove trash bin / loading dock,
add grass / sidewalks



MUSTANGS WALK- PH 4

Remove sidewalks that are currently next to buildings

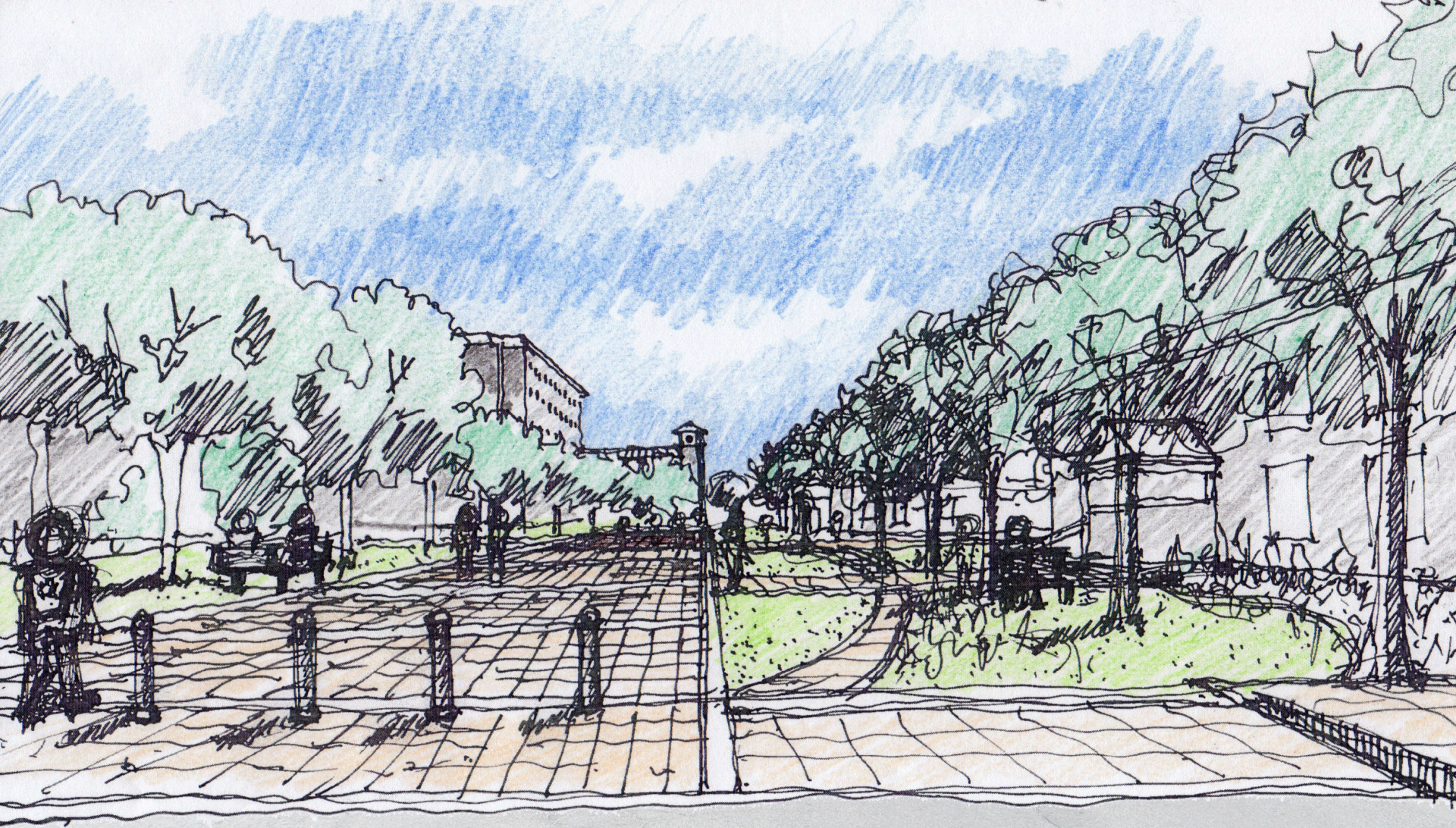
Add landscaping between buildings and Mustangs Walk



Mississippi State University



EXISTING VIEW OF TEEPEE DRIVE



PROPOSED SKETCH FOR CLOSURE OF TEEPEE DRIVE