

**DATE ISSUED:**  
DEC. 06, 2021

**ISSUES:**  
ISSUED FOR REVIEW 11-29-2021  
ISSUED FOR CONST. 12-06-2021

**REVISIONS:**

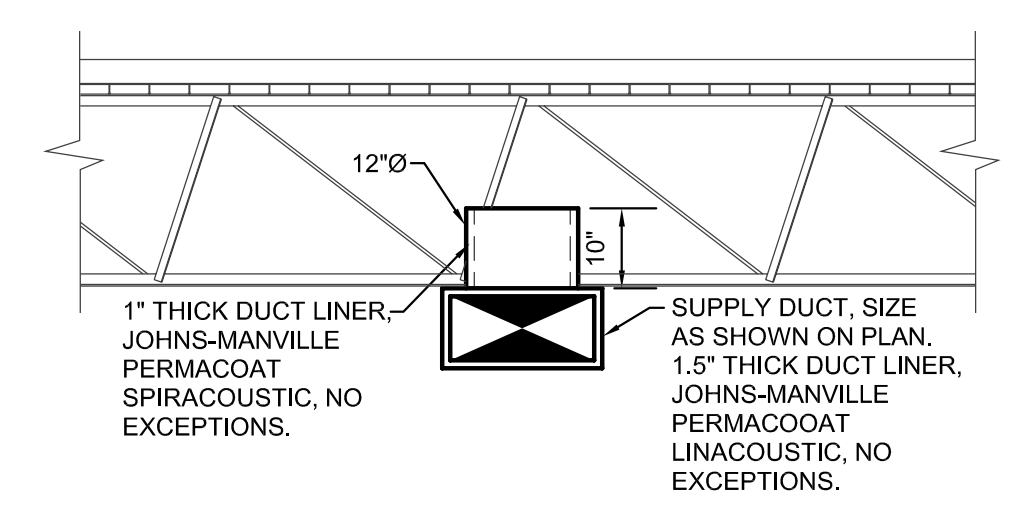
**SHEET CONTENTS:**  
MECHANICAL FLOOR PLAN

**SHEET NUMBER:**  
**M2.1**

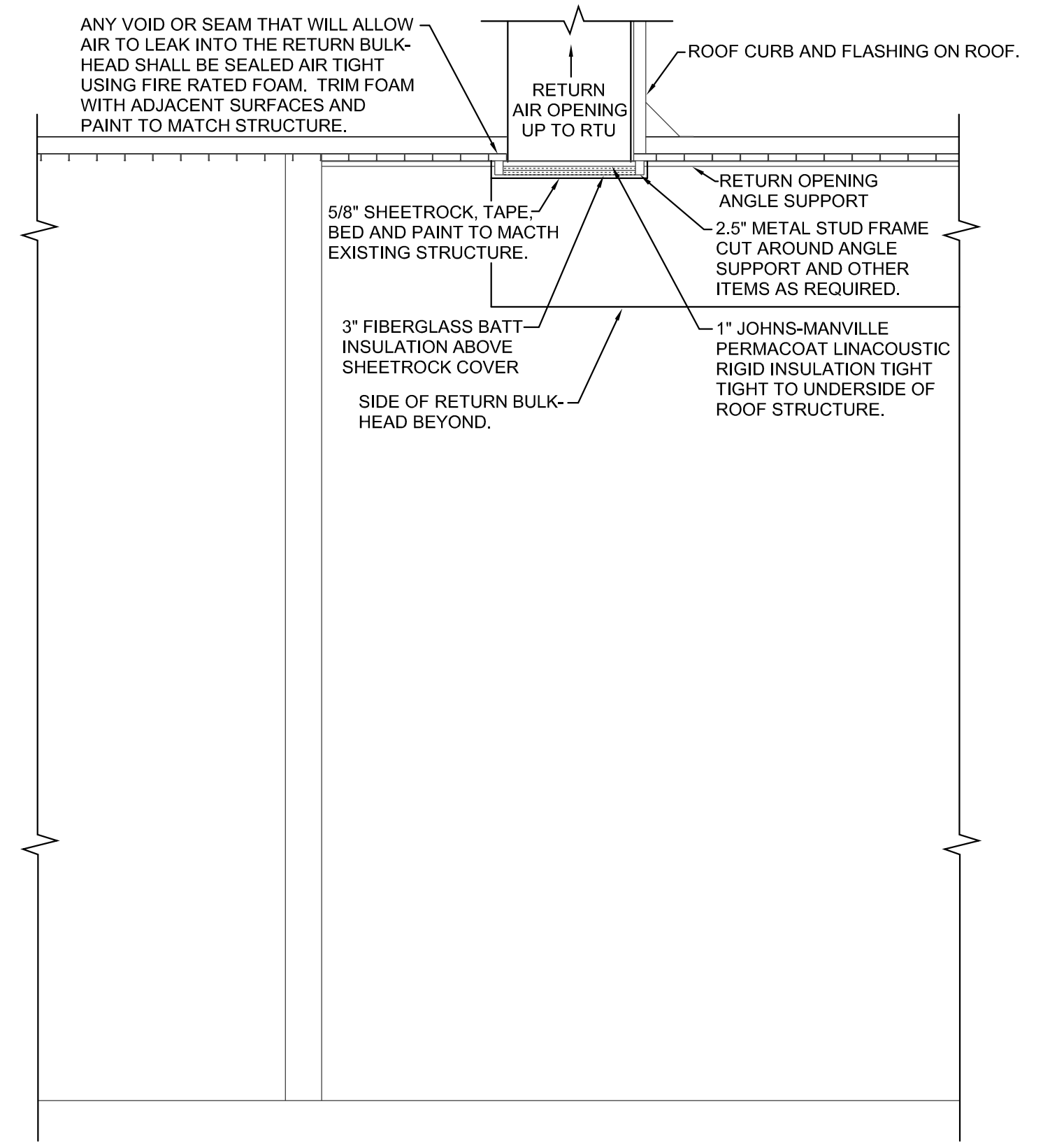
THE EIGHT NEW SUPPLY DIFFUSERS, DUCTS, MODIFICATIONS TO THE DUCT MAIN, AND CONTROLS FOR THIS GALLERY ARE BID ALTERNATE #1

THE DUCTWORK EXTENSIONS, DAMPERS, DUCT HEATER, CONTROLS AND RETURN AIR BULKHEAD ARE BID ALTERNATE #2  
RETURN BULKHEAD FOR GALLERY 2 IS NOT PART OF ALTERNATE

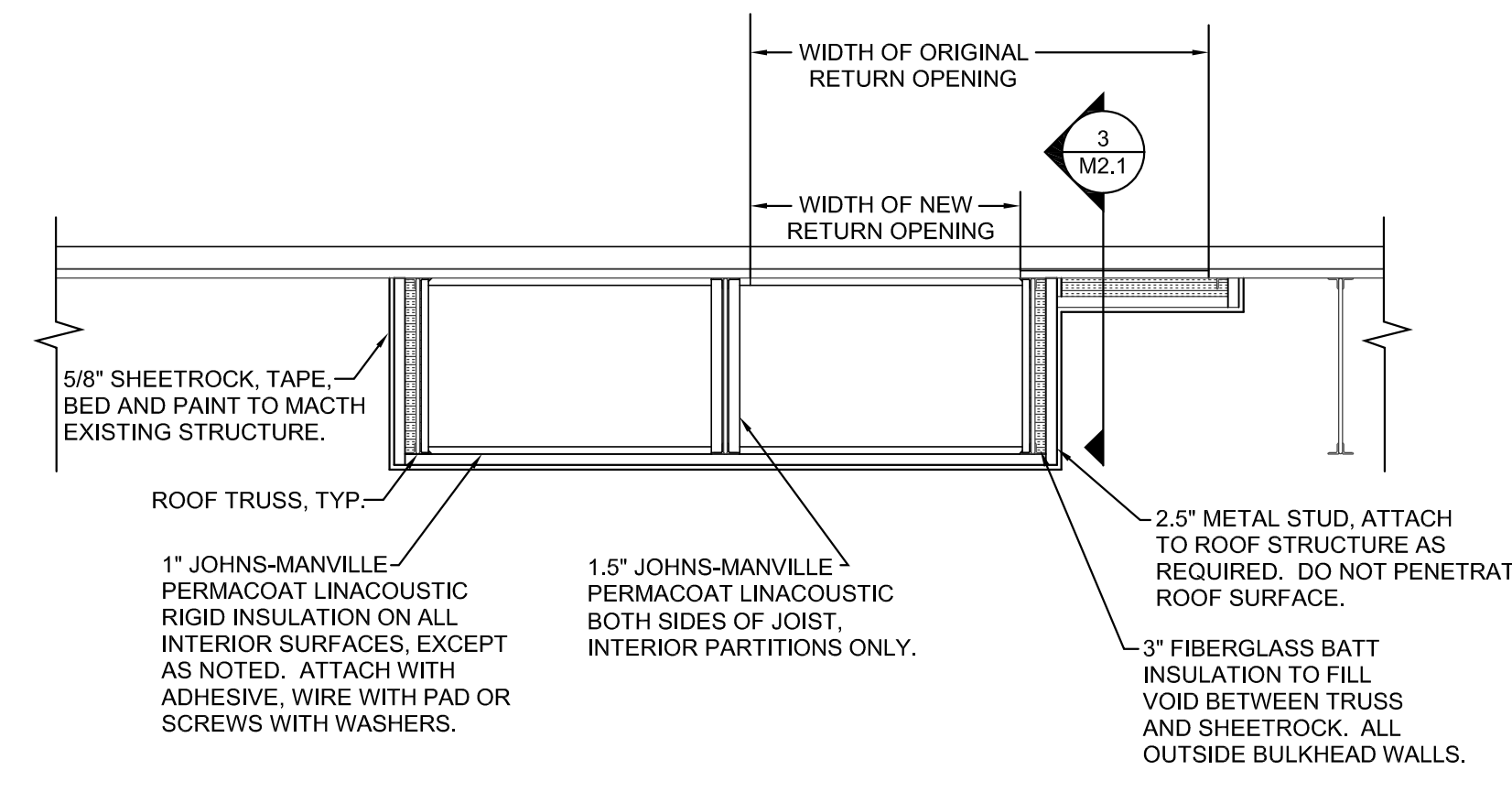
- NOTES BY SYMBOL "M"**
- 1 PROVIDE DUCT HEATER WITH CONTROL OPTION "K" AND ALL MOUNTING HARDWARE.
  - 2 CONSTRUCTION OF THE RETURN BULKHEAD ABOVE THE SUPPLY DUCT WILL BE DIFFICULT. SOME MODIFICATIONS TO THE ASSEMBLY OF THE BULKHEAD BOTTOM MAY BE REQUIRED. ONCE THE BULKHEAD IS IN PLACE THE SUPPLY DUCT SECTION SHALL BE REINSTALLED AND SEALED AIR TIGHT.
  - 3 RETURN AIR OPENING COVER IS SIMILAR TO COVER SHOWN IN DETAILS 2 & 3 ON M2.1.



**4 TYPICAL SUPPLY DIFFUSER**  
SCALE: 1/2" = 1'-0"

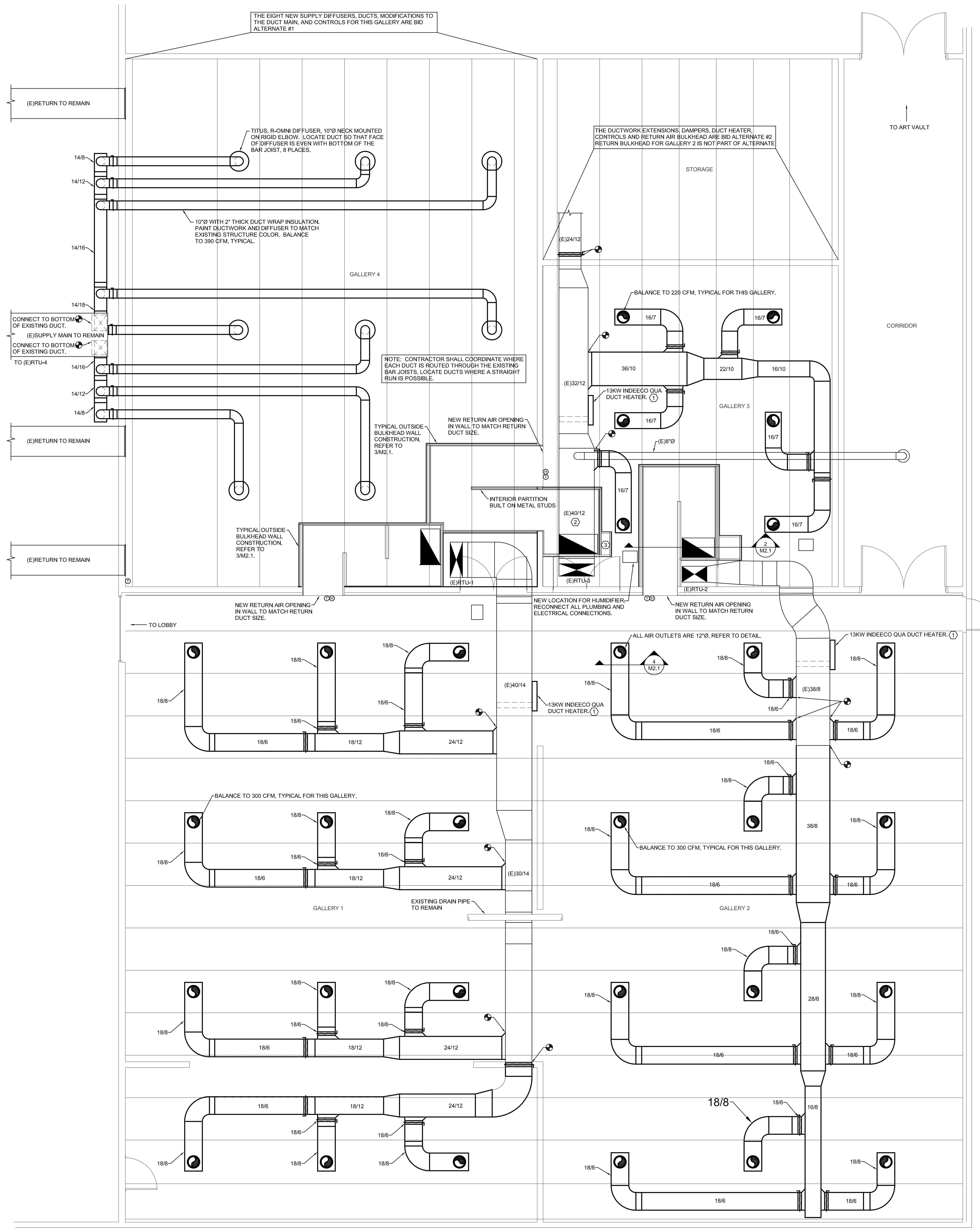
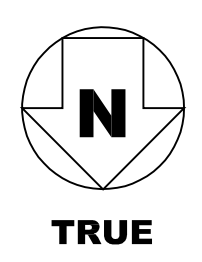
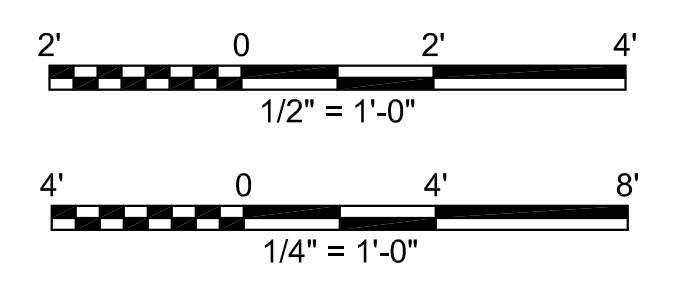


**3 SECTION**  
SCALE: 1/2" = 1'-0"



**2 TYPICAL BULKHEAD DETAIL**  
SCALE: 1/2" = 1'-0"

NOTE: PLACE 2.5" x 1.5" METAL STUDS AT APPROXIMATELY 16" CENTERS, OR AS CLOSE TO THAT AS POSSIBLE GIVEN ALL OF THE ITEMS THAT ARE EXISTING. THE STUDS SHALL BE SET WITH THE 1.5" SIDE AS SHOWN IN THE SECTION ABOVE. THE SPACE BETWEEN THE SHEET ROCK AND RIGID INSULATION ON THE BOTTOM SURFACE OF THE BULKHEAD SHALL BE FILLED WITH FIBERGLASS BATT INSULATION. THERE ARE MANY ITEMS THAT WILL BE IN THE INTENDED PATH OF THE BULKHEAD WALLS. THE CONTRACTOR SHALL ADJUST THE WALLS AND ROUTE AROUND ITEMS TO PROVIDE AN AIR TIGHT RETURN PATH. PIPE, CONDUIT, STRUCTURE, ETC. CAN BE LEFT INSIDE THE BULKHEAD AND WHERE IT PENETRATES THE WALL THE CONTRACTOR SHALL GET THE INSULATION AND SHEET-ROCK AS CLOSE AS POSSIBLE AND THEN SEAL THE REMAINING GAP WITH FIRE RATED FOAM.



**1 MECHANICAL FLOOR PLAN**  
SCALE: 1/4" = 1'-0"