



Office of Purchasing/Contract Management  
3410 Taft Boulevard Wichita Falls, Texas 76308-2099

## ADDENDUM ONE

July 14, 2016

TO WHOM IT MAY CONCERN

Reference: RFP #735-16-8162 Legacy Hall Pathway Connections

This letter serves as addendum one to the above referenced project which is currently out for bid. Please see the following narrative and drawings which are part of the bid specifications.

The following dates now apply to the bid package.

1. Final day for Questions: July 18, 2016
2. New Bid Due Date: July 26, 2016, 2 PM
3. Contract award : July 28, 2016
4. Construction Start: No later Than August 10, 2016
5. Completion of East Eide Connection sidewalks: August 19, 2016

If you have any questions please contact me.

Thank You.

Sincerely,

Stephen Shelley  
Director of Purchasing/Contract Management  
[stephen.shelley@mwsu.edu](mailto:stephen.shelley@mwsu.edu)  
940 397-4110

Cc:  
David Percy

**BID DOCUMENT ADDENDUM**

Page 1 of 2

**Project:** Midwestern State University  
New Residence Hall  
Site Improvements - Bid Package 01

**Addendum No.:** 01

**RFP No.:** #735-16-8162

**Date of Issuance:** July 12, 2016

You are instructed to read and to note the following described changes, corrections, clarifications, omissions, deletions, additions, approvals and statements pertinent to the Contract Bid and Construction Documents.

Addendum No.1 is a part of the Contract Bid and Construction Documents and shall govern in the performance of the Work.

Article 1-1, Drawings, C100, Site Paving Plan, Bid Package 1:

- A. MODIFY Sheet C100 to include the following:
  - 1. Legend: 4" thick color and stamped concrete. ADD the following: provide under-slab, 15 mil vapor barrier at stamped, color concrete locations. WR Meadows, Perminator 15 or approved equal.
- B. CLARIFICATION to Sheet C100:
  - 1. Utilities indicated on Sheet C100 are existing, EXCEPT those included within the boundaries of the ADD Alternate.

Article 1-2, Drawings, C102, Site Grading Plan, Bid Package 1:

- A. CLARIFICATION to Sheet C102:
  - 1. Elevation grades indicated on Sheet C102 are final finish grades.
  - 2. Existing site will be provided to rough grades, 4" below final finish grades on Sheet C102.

Article 1-3, Drawings, L100.01, Materials Plan, Bid Package 1 (Attachment):

- A. REPLACE Sheet L100.01 with attached Sheet L100.01, Rev 1. Changes to this sheet include the following:
  - 1. Clarified areas of new and existing concrete pavement to coordinate with Sheet C100.
  - 2. Added Note 18 and locations for concrete mow edge.
  - 3. Added Note 22 and locations for concrete maintenance band

Article 1-4, Drawings, L101.01, Materials Plan, Bid Package 1 (Attachment):

- A. REPLACE Sheet L101.01 with attached Sheet L101.01, Rev 1. Changes to this sheet include the following:
  - 1. Clarified areas of new and existing concrete pavement to coordinate with Sheet C100.
  - 2. Added the location and quantity of study bars.

Article 1-5, Drawings, L200.01, Details, Bid Package 1 (Attachment):

- A. REPLACE Sheet L200.01 with attached Sheet L200.01, Rev 1. Changes to this sheet include the following:
  - 1. Added concrete mow edge and maintenance band details.
  - 2. Added concrete control & expansion joint details.



3. Added and modified masonry plinth details.

Article 1-6, Drawings, E020, Electrical Site Plan (Attachment):

- A. ADD Sheet E020, rev 2:
  1. Added notes 17 and 18 – Power and pathway for exterior site lighting.

Article 1-7, Drawings, E101a, Electrical 1<sup>st</sup> Floor Area North (Attachment):

- A. ADD Sheet E101a, rev 5:
  1. Added notes 7, 8, 13, and 14 - Power and pathway for exterior site lighting and fire pit ignition.

Article 1-8, Drawings, E101b, Electrical 1<sup>st</sup> Floor Area South (Attachment):

- A. ADD Sheet E101b, rev 4:
  1. Added note 4 - Power and pathway for exterior site lighting.

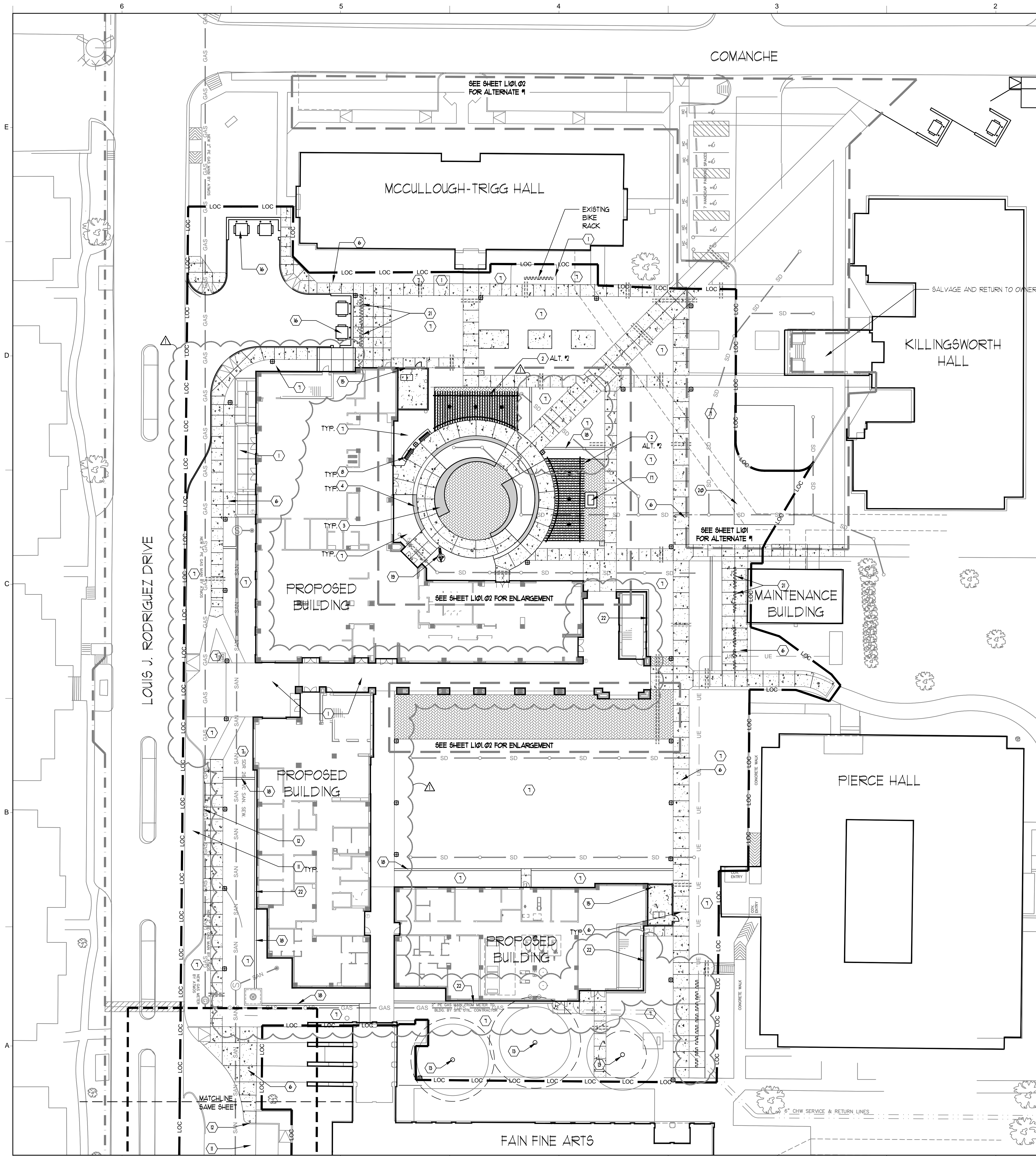
Article 1-9, Drawings, E701, Electrical Schedules (Attachment):

- A. ADD Sheet E701, rev 3:
  1. Added exterior site lighting and power panelboard schedule.

Article 1-10, Drawings, E702, Electrical Schedules (Attachment):

- A. ADD Sheet E702, rev 4:
  1. Added exterior site lighting and power panelboard schedules.

End of Addendum No. 1  
Attachments



### LIGHTING SCHEDULE

- PEDESTRIAN POLE LIGHT  
STERNBERG, MAIN STREET, MS805 BLEED, POLE  
8410 TFF6  
26 QTY
- \* BEGA T526MH SMALL-SCALE FLOODLIGHTS  
6 QTY, ALT #2

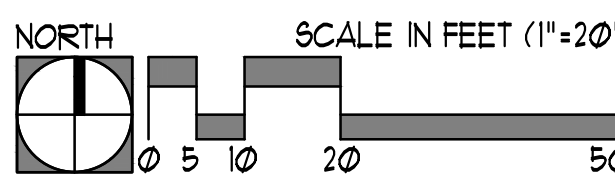
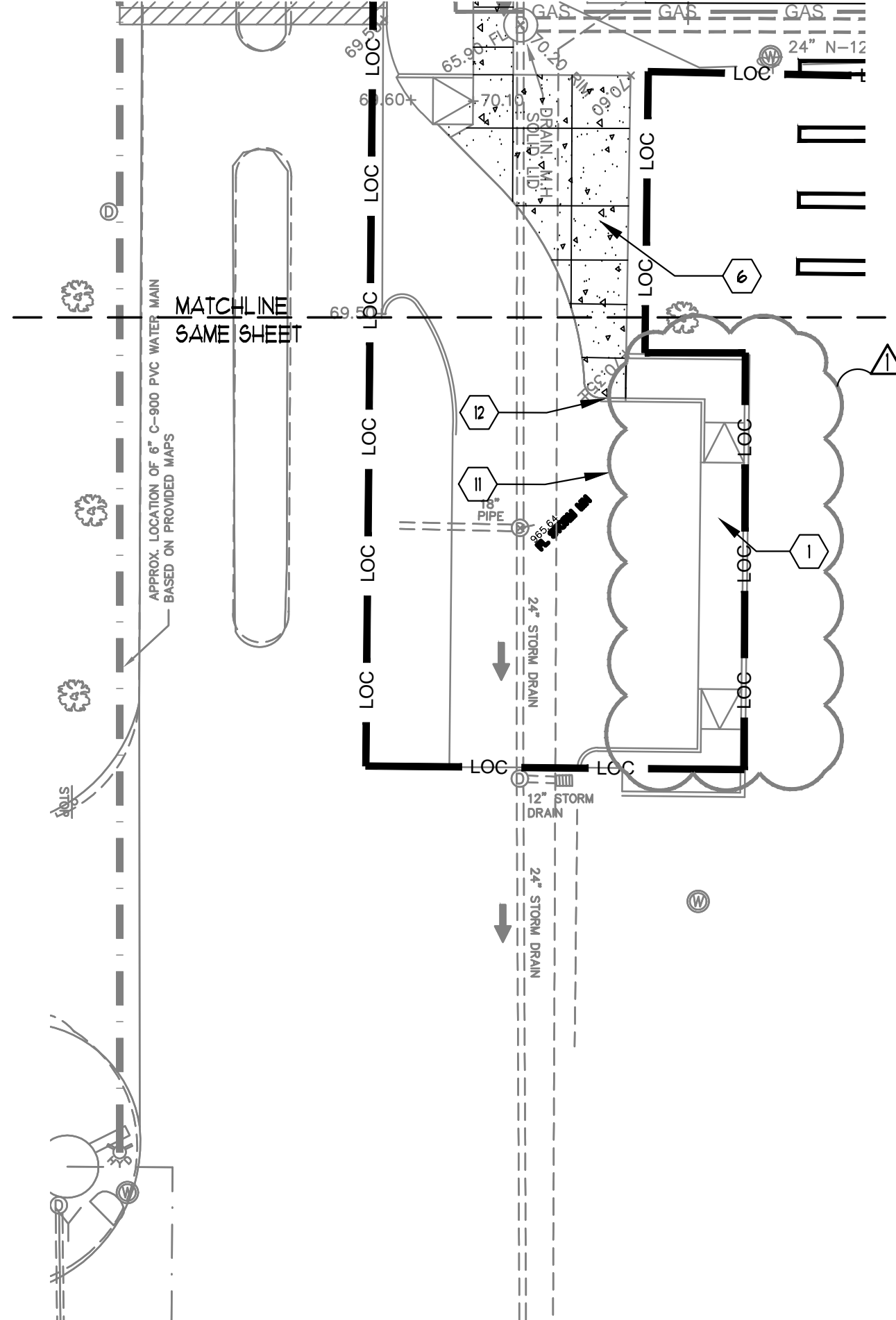
### CONSTRUCTION NOTES:

- EXISTING CONCRETE PAD
- SHADE STRUCTURE, ALTERNATE #2, SEE DETAIL 4/L201.1
- MASONRY PLINTH, SEE DETAIL 1 & 10/L200.01
- GARDEN WALL, SEE DETAIL 6/L200.01
- NOT USED
- CONCRETE WALK, SEE DETAILS 5/L200.01
- LANDSCAPE AREA, SEE BID PACKAGE 02 DRAWINGS
- NOT USED
- NOT USED
- NOT USED
- PARKING, REFERENCE CIVIL
- CURB, REFERENCE CIVIL
- EXISTING TREES, PROTECT IN PLACE, SEE TREE PROTECTION DETAIL, AND SPECIFICATIONS.
- NOT USED
- SCREEN WALL WITH GATE, SEE DETAIL C5/AS-100
- DUMPSTER, REFERENCE CIVIL
- GAS FIRE PIT, SEE DETAIL 8/L200.01
- CONCRETE MOW EDGE, SEE DETAIL 3/L200.01
- HORSE ART INSTALLATION, PROVIDED BY CLIENT, CONCRETE PAD TO BE INSTALLED BY CONTRACTOR, THICKNESS AND REINFORCING TO BE DETAILED BY STRUCTURAL.
- VOLLEYBALL SEE DETAIL 3/L201.01, ALT #1
- SALVAGED BIKE RACKS (NIC)
- CONCRETE MAINTENANCE BAND, SEE DETAIL 3/L200.01

### MATERIALS SCHEDULE

SYMBOL	MATERIAL
	MEDIUM BROOM FINISH CONCRETE
	STAMPED CONCRETE TO MATCH CAMPUS STANDARD PATTERN COLOR TO MATCH CAMPUS STANDARD CONTRACTOR TO SUBMIT 5'x5' MOCK-UP OF PATTERN AND COLOR FOR APPROVAL PRIOR TO CONSTRUCTION

### PARKING AREA



### SITE IMPROVEMENTS - BP 01

DATE: 06/09/16

MIDWESTERN STATE UNIVERSITY  
3410 Taft Blvd.  
Wichita Falls, TX 76308

**COLEMAN & ASSOCIATES**  
Landscape Architecture  
Environmental Design  
9890 Silver Mountain Drive  
Austin, Texas 78737  
Ph: 512-476-2090  
F: 512-476-2099

**NEW RESIDENCE HALL**  
3410 TAFT BLVD.  
WICHITA FALLS, TX 76308

**TREANOR ARCHITECTS**  
1700 Pacific Avenue, Suite 2630  
Wichita Falls, TX 76308  
Office: 214.310.1018  
Fax: 214.310.1342  
www.treanorarchitects.com

Treanor Architects P.A., Architect  
Missouri Certificate of Authority #: A230003047

© 2015 Treanor Architects, P.A.



NO.	REVISIONS	DATE
1	DESCRIPTION ADDENDUM #1	7/1/16

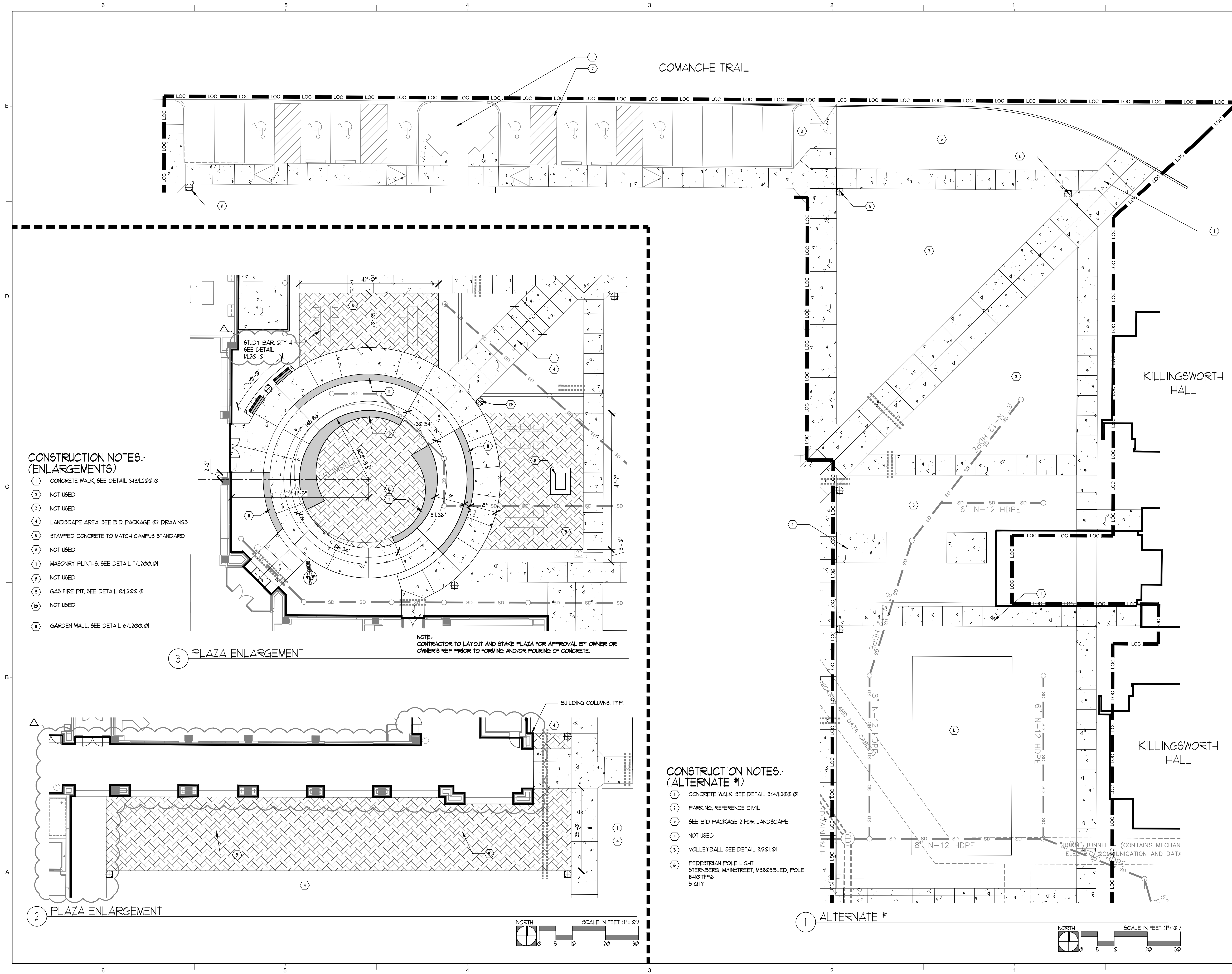
L100.01

MATERIALS PLAN  
BID PACKAGE 01

TREANOR NO. SL14.003.00B



DATE PRINTED: 5/12/2016 9:42:21 AM  
FILE PATH: C:\MSO\ARCH\Jmment



CONSTRUCTION NOTES:  
(ENLARGEMENTS)

- ① CONCRETE WALK, SEE DETAIL 349/L200.01
- ② NOT USED
- ③ NOT USED
- ④ LANDSCAPE AREA, SEE BID PACKAGE 02 DRAWINGS
- ⑤ STAMPED CONCRETE TO MATCH CAMPUS STANDARD
- ⑥ NOT USED
- ⑦ MASONRY PLINTHS, SEE DETAIL 7/L200.01
- ⑧ NOT USED
- ⑨ GAS FIRE PIT, SEE DETAIL 8/L200.01
- ⑩ NOT USED
- ⑪ GARDEN WALL, SEE DETAIL 6/L200.01

NOTE:  
CONTRACTOR TO LAYOUT AND STAKE PLAZA FOR APPROVAL BY OWNER OR  
OWNER'S REP PRIOR TO FORMING AND/OR POURING OF CONCRETE.

CONSTRUCTION NOTES:  
(ALTERNATE #1)

- ① CONCRETE WALK, SEE DETAIL 344/L200.01
- ② PARKING, REFERENCE CIVIL
- ③ SEE BID PACKAGE 2 FOR LANDSCAPE
- ④ NOT USED
- ⑤ VOLLEYBALL, SEE DETAIL 3/201.01
- ⑥ PEDESTRIAN POLE LIGHT  
STERNBERG, MAINSTREET, MS805 BLEED, POLE  
8410 TFF6  
5 QTY

SITE IMPROVEMENTS -  
BP 01

DATE: 06/09/16

MIDWESTERN STATE  
UNIVERSITY

3410 Taft Blvd.

Wichita Falls, TX 76308

COLEMAN &  
ASSOCIATES

Landscape Architecture  
Environmental Design

9890 Silver Mountain Drive  
Austin, Texas 78737

Ph: 512-476-2090  
F: 512-476-2099

NEW RESIDENCE HALL

3410 TAFT BLVD.  
WICHITA FALLS, TX 76308

TREASNOR  
ARCHITECTS

1700 Pacific Avenue, Suite 2630  
Dallas, Texas 75201  
Office: 214.310.1018  
Fax: 214.310.1942  
www.treasnorarchitects.com

Treasnor Architects P.A., Architect  
Missouri Certificate of Authority #: A200003047

6/9/2016

REVISIONS

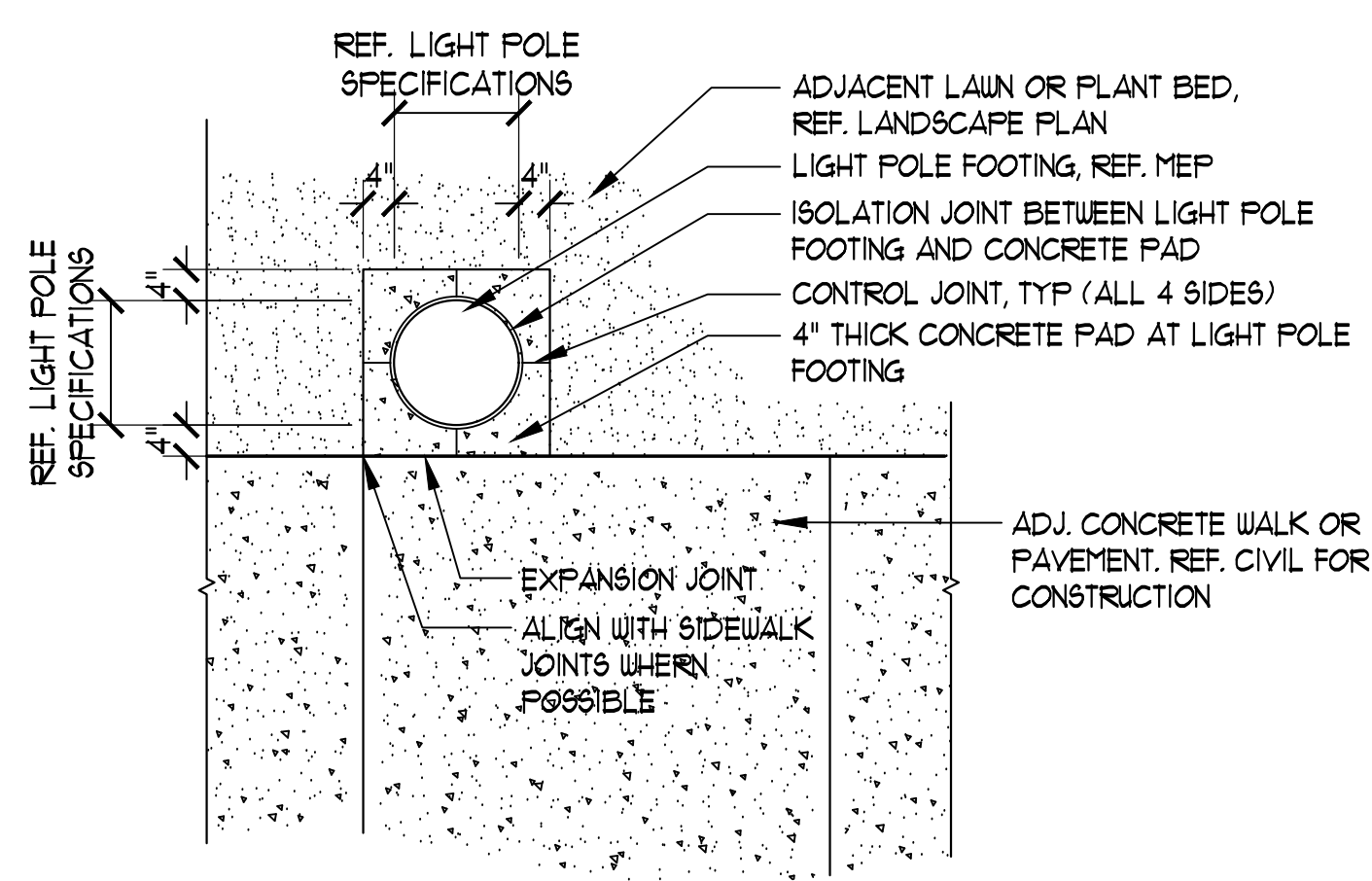
NO.	DESCRIPTION	DATE
1	ADDENDUM #1	7/1/16

L101.01

MATERIALS PLAN  
BID PACKAGE 01

TREASNOR NO. SL14.003.00B

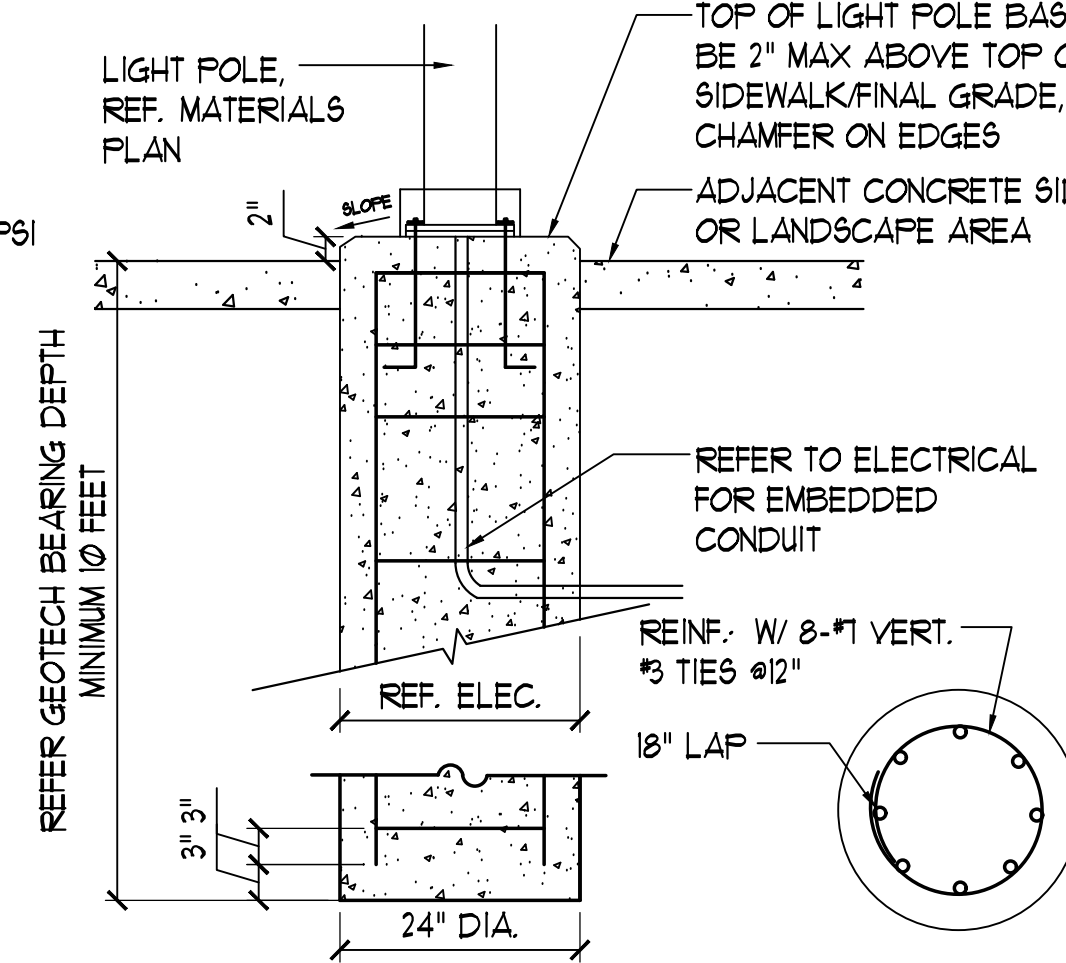




1 LIGHT POLE BASE

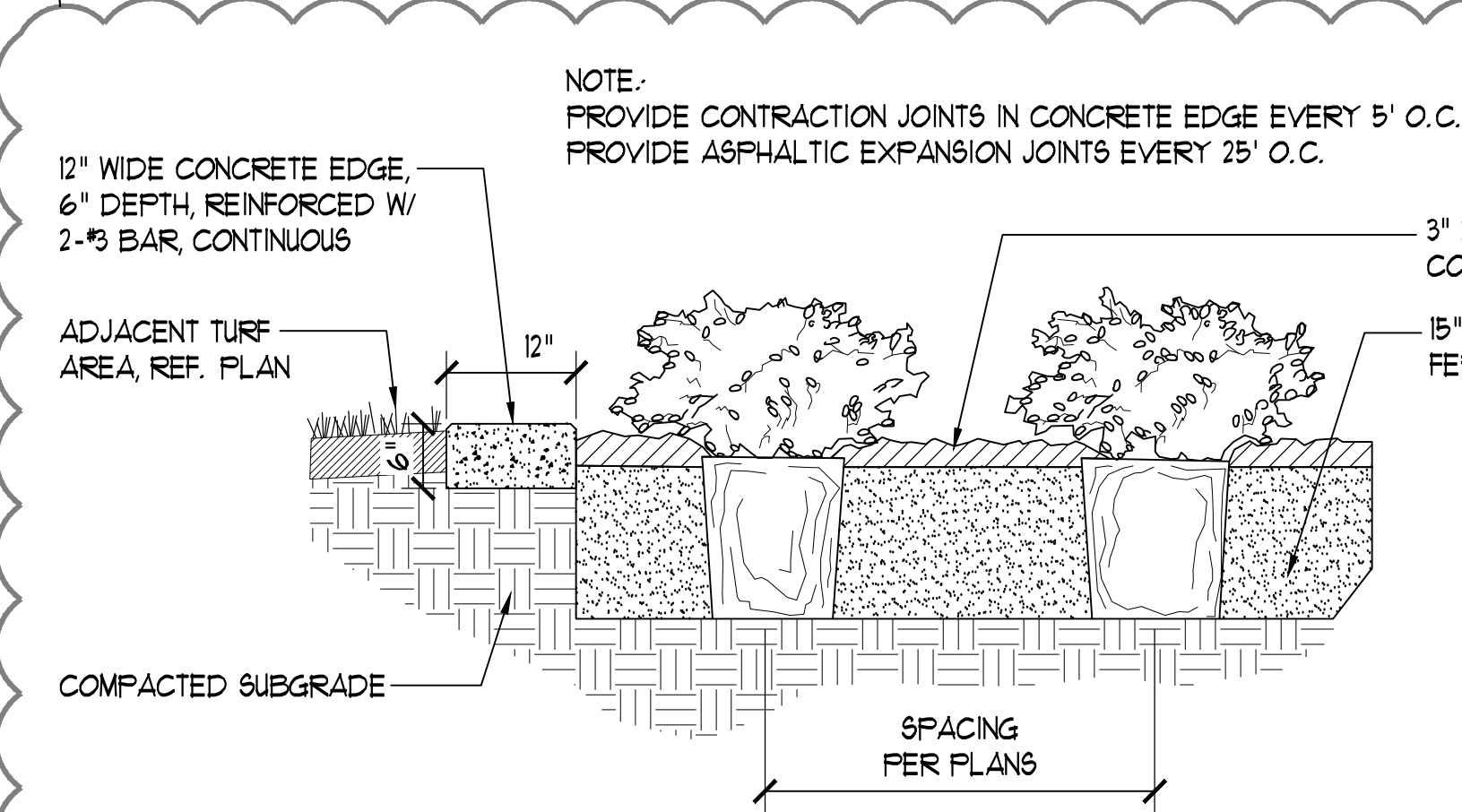
SCALE: 1/2" = 1'-0"

- NOTES:
1. BASIC WIND SPEED (3 SEC) 90 MPH
  2. COORDINATE LOCATION WITH LANDSCAPE DRAWINGS.
  3. CONCRETE SHALL HAVE A MINIMUM COMPRESSIVE STRENGTH OF 3000 PSI WITH AGGREGATE SIZE OF 1 1/2"
  4. PROVIDE POLE HEIGHT, POLE DIAMETER AND LOAD INFO.



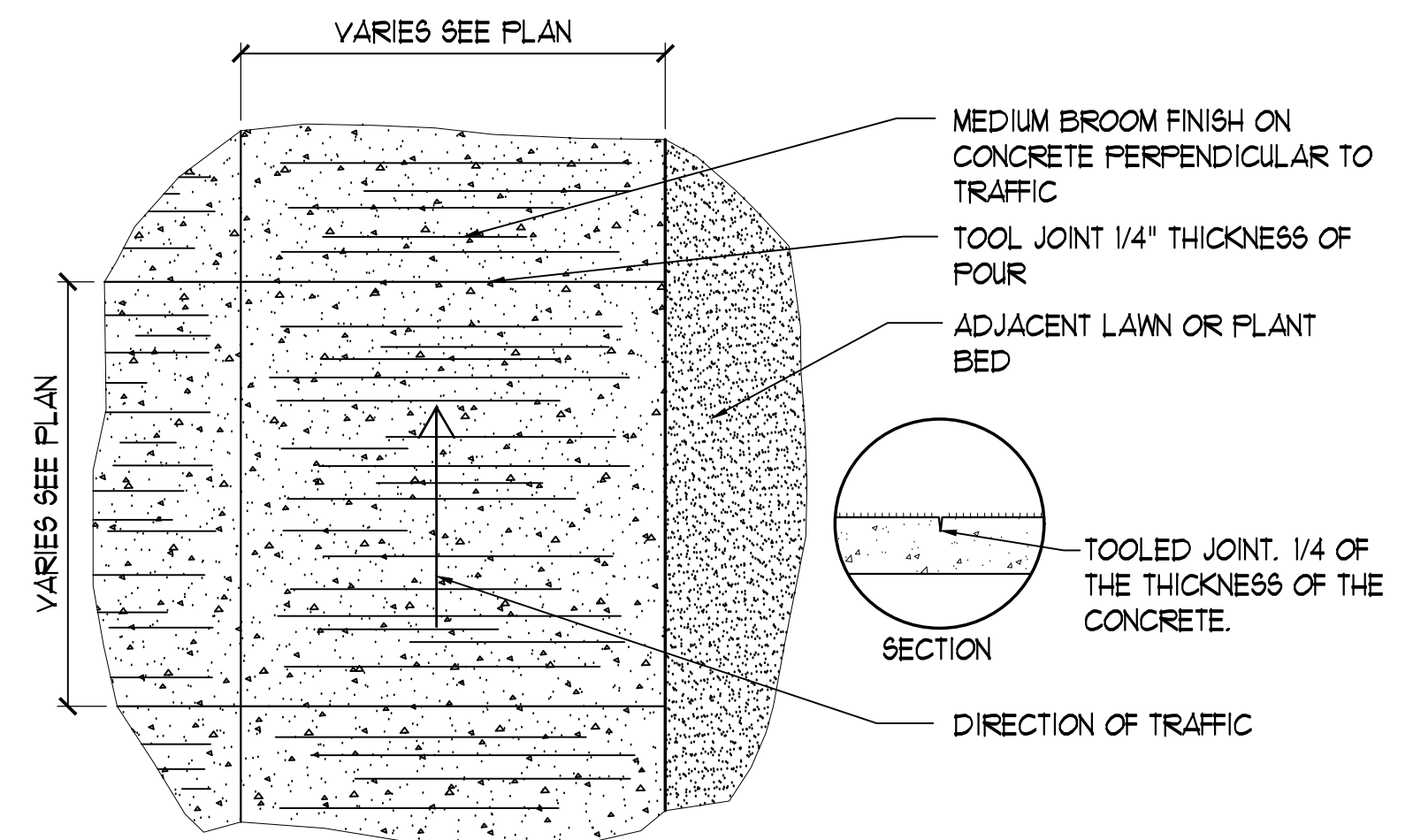
2 LIGHT POLE FOOTING

SCALE: 3/4" = 1'-0"

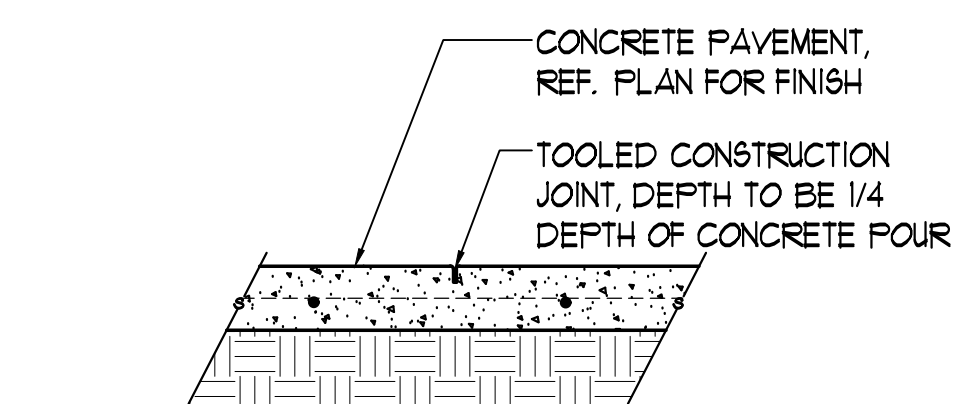


3 CONCRETE MOW EDGE

SCALE: 3/4" = 1'-0"



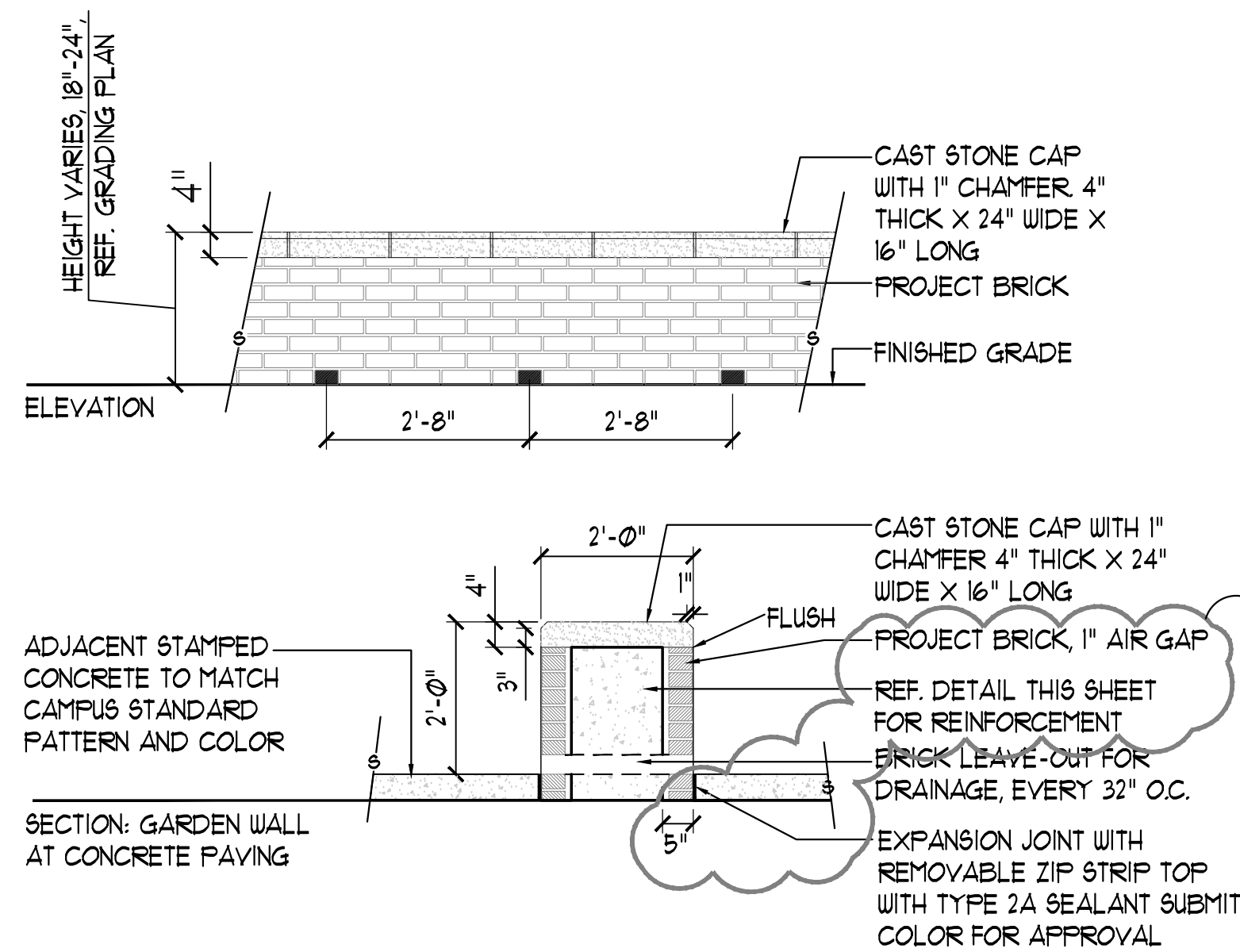
4 SIDEWALK FINISH



- NOTES:
1. A MINIMUM OF (2) DOWEL SLIP JOINTS SHALL BE PROVIDED AT EACH EXPANSION JOINT. EXPANSION JOINTS INSTALLED EVERY 50'-0" O.C. OR WHERE SHOWN.
  2. SEALANT COLOR TO MATCH THE DARKEST, ADJACENT CONCRETE COLOR. CONTRACTOR TO SUBMIT SAMPLES PRIOR TO CONSTRUCTION.

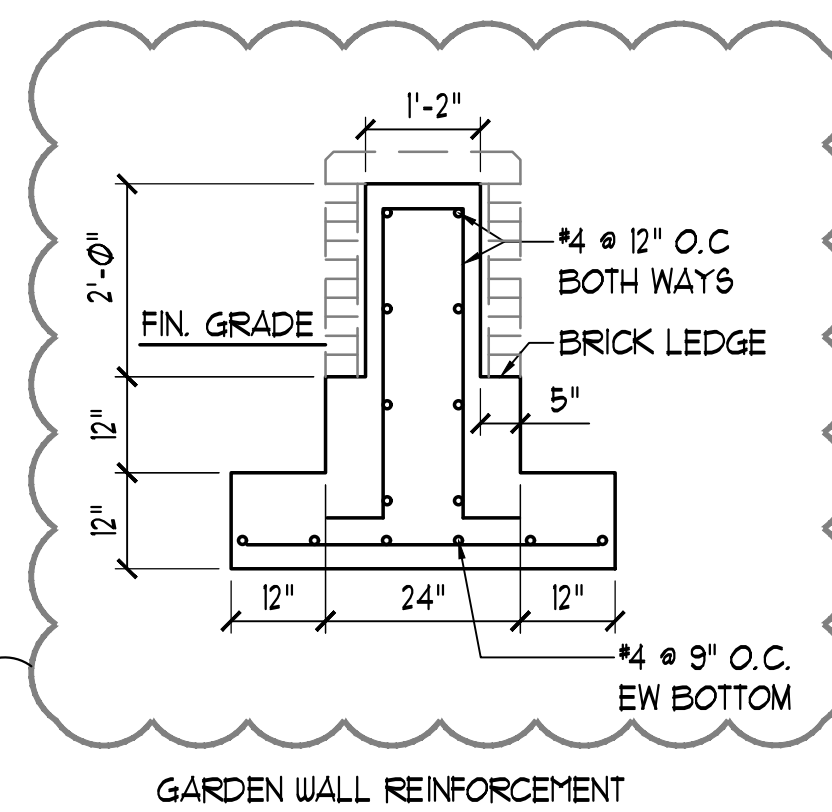
5 CONCRETE CONTROL &amp; EXPANSION JOINTS

SCALE: 1" = 1'-0"



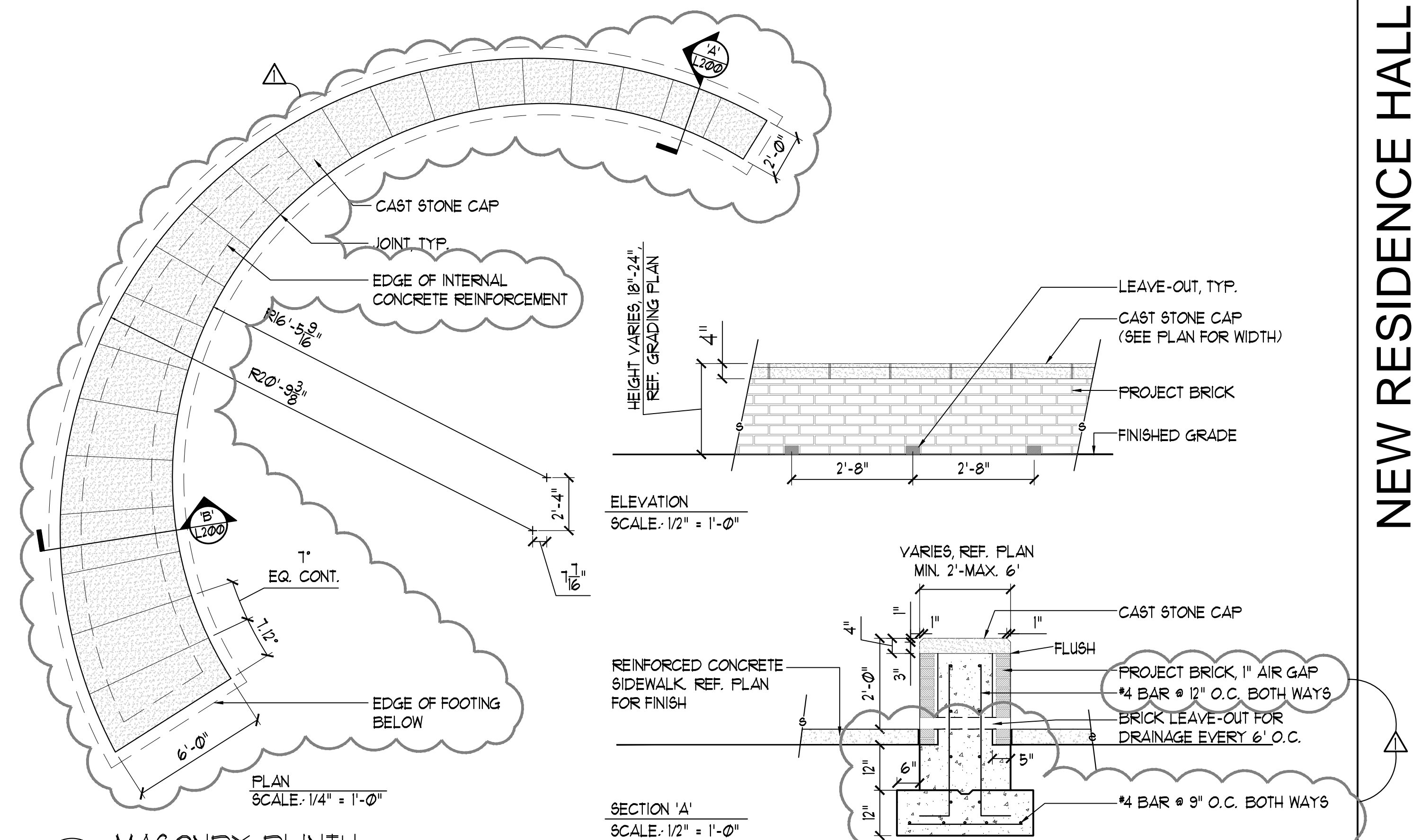
6 GARDEN WALL

SCALE: 1/2" = 1'-0"



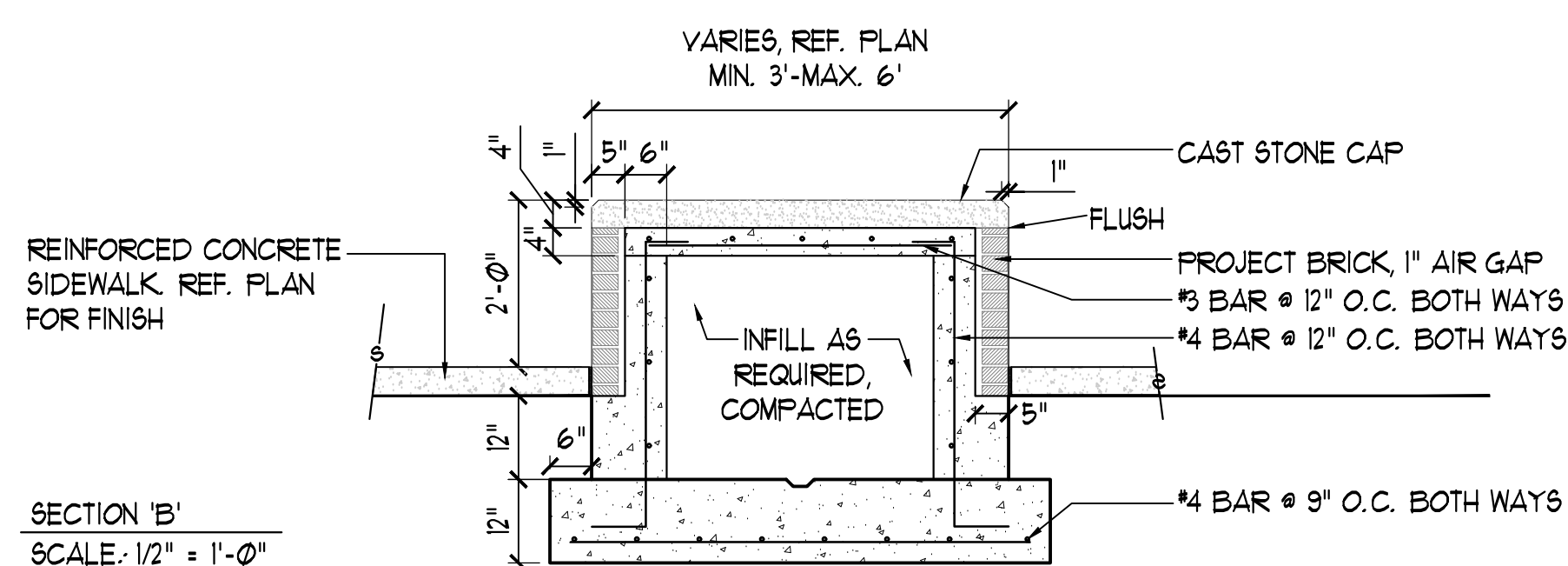
7 MASONRY PLINTH

SCALE: AS SHOWN



8 GAS FIREPIT

SCALE: 1/2" = 1'-0"



9 CONCRETE MAINTENANCE BAND

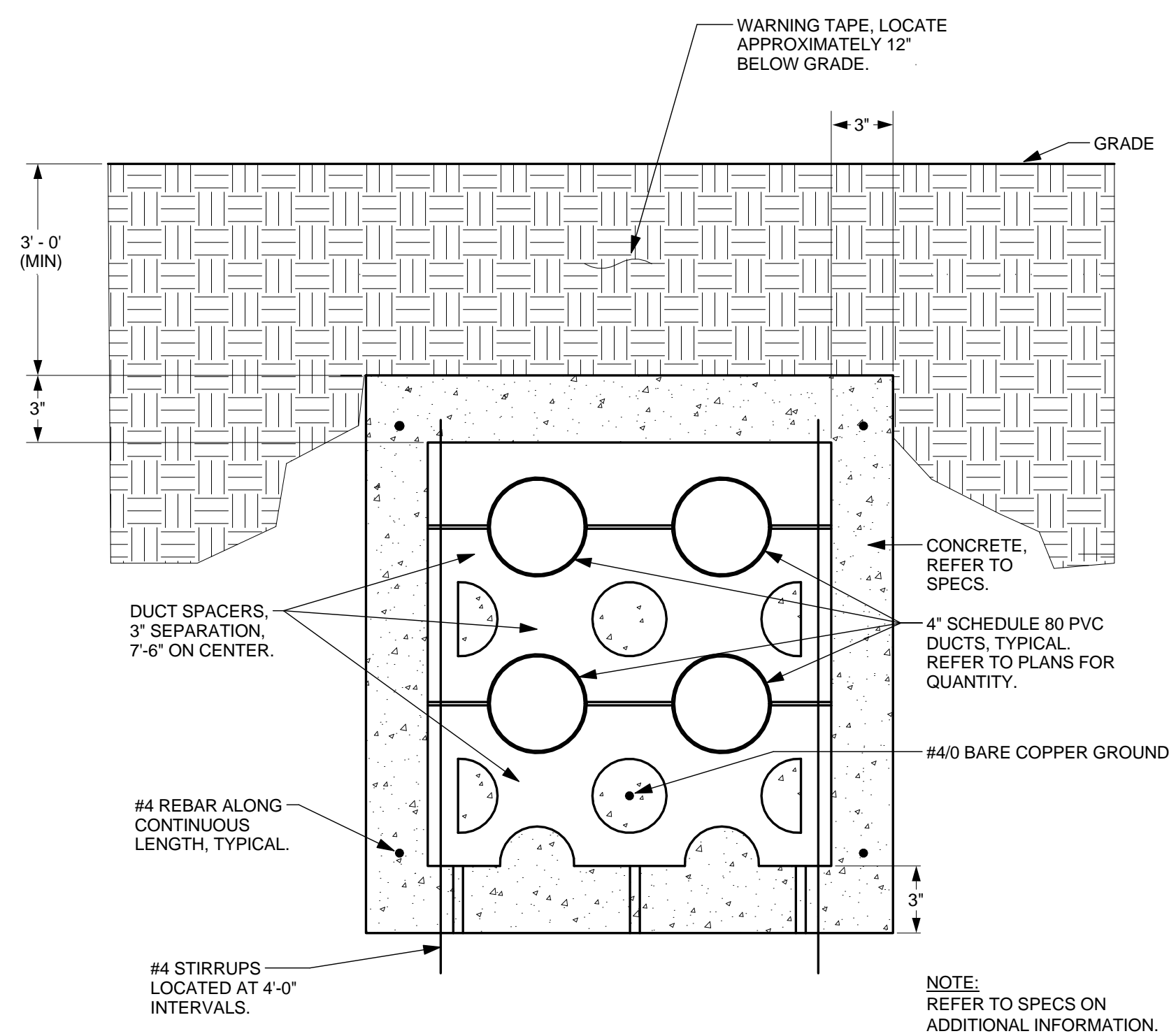
SCALE: 1" = 1'-0"

10 MASONRY PLINTH

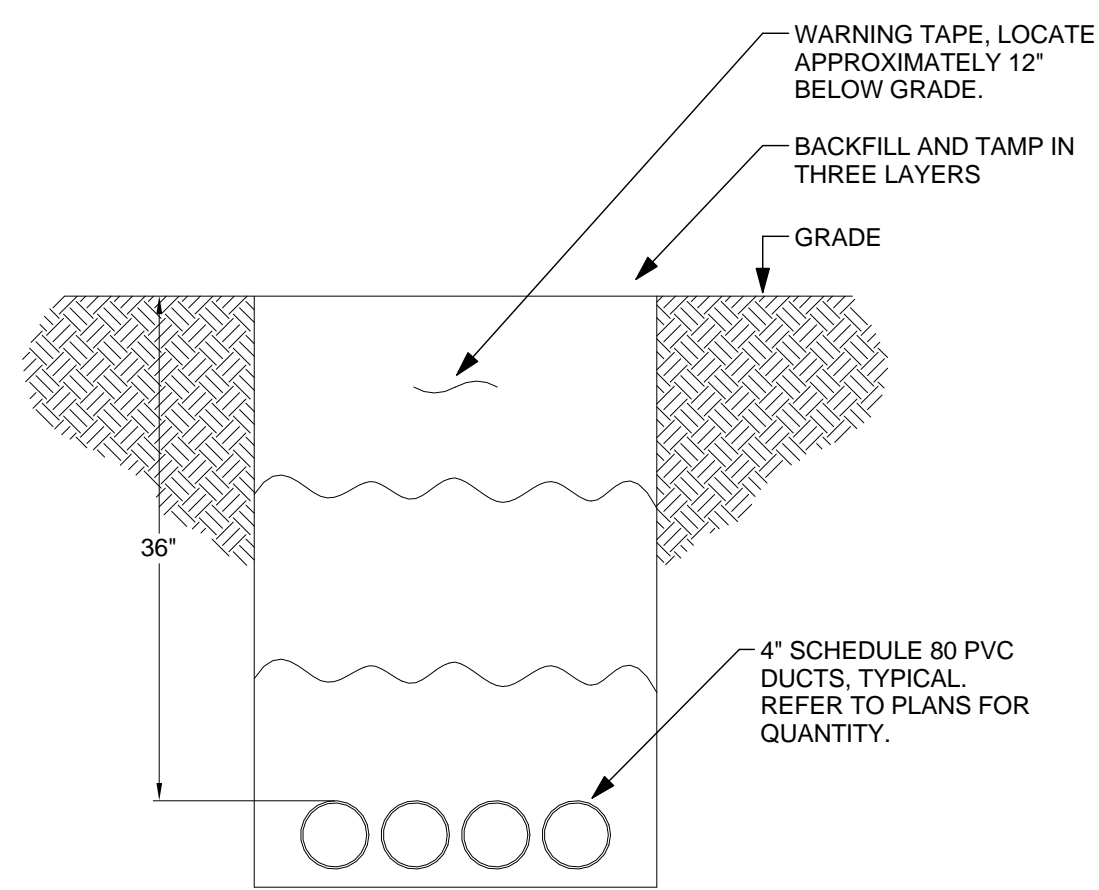
SCALE: AS SHOWN



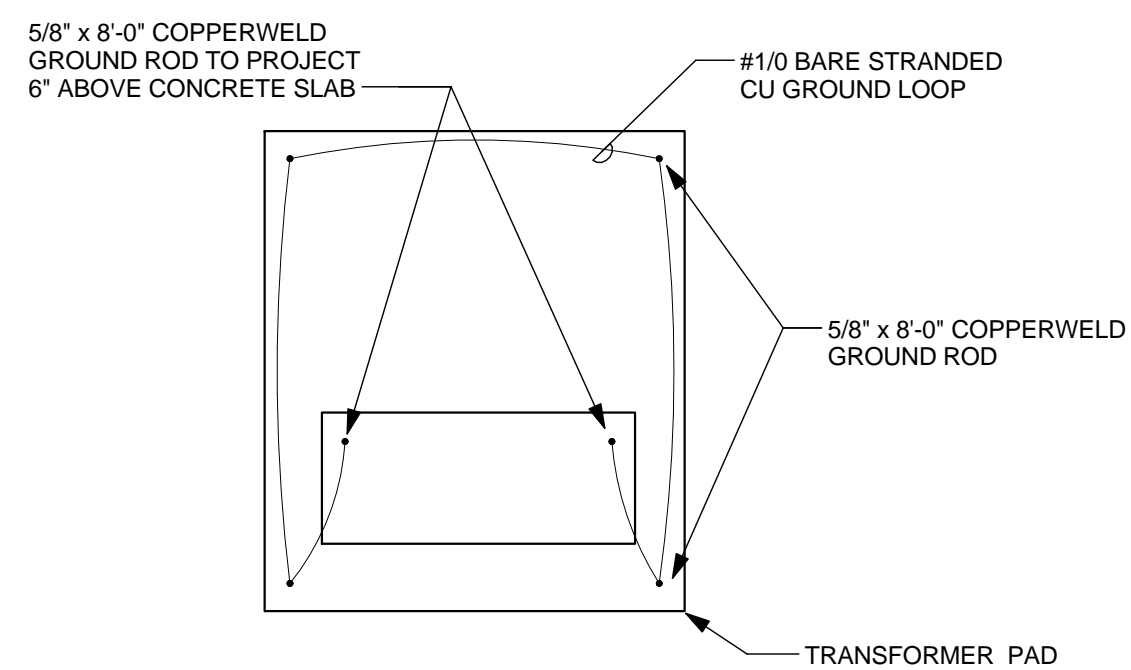
DATE PRINTED: 7/7/2016 4:27:36 PM  
FILE PATH: C:\temp\MSD\MEF-JLDCG-04.vrt



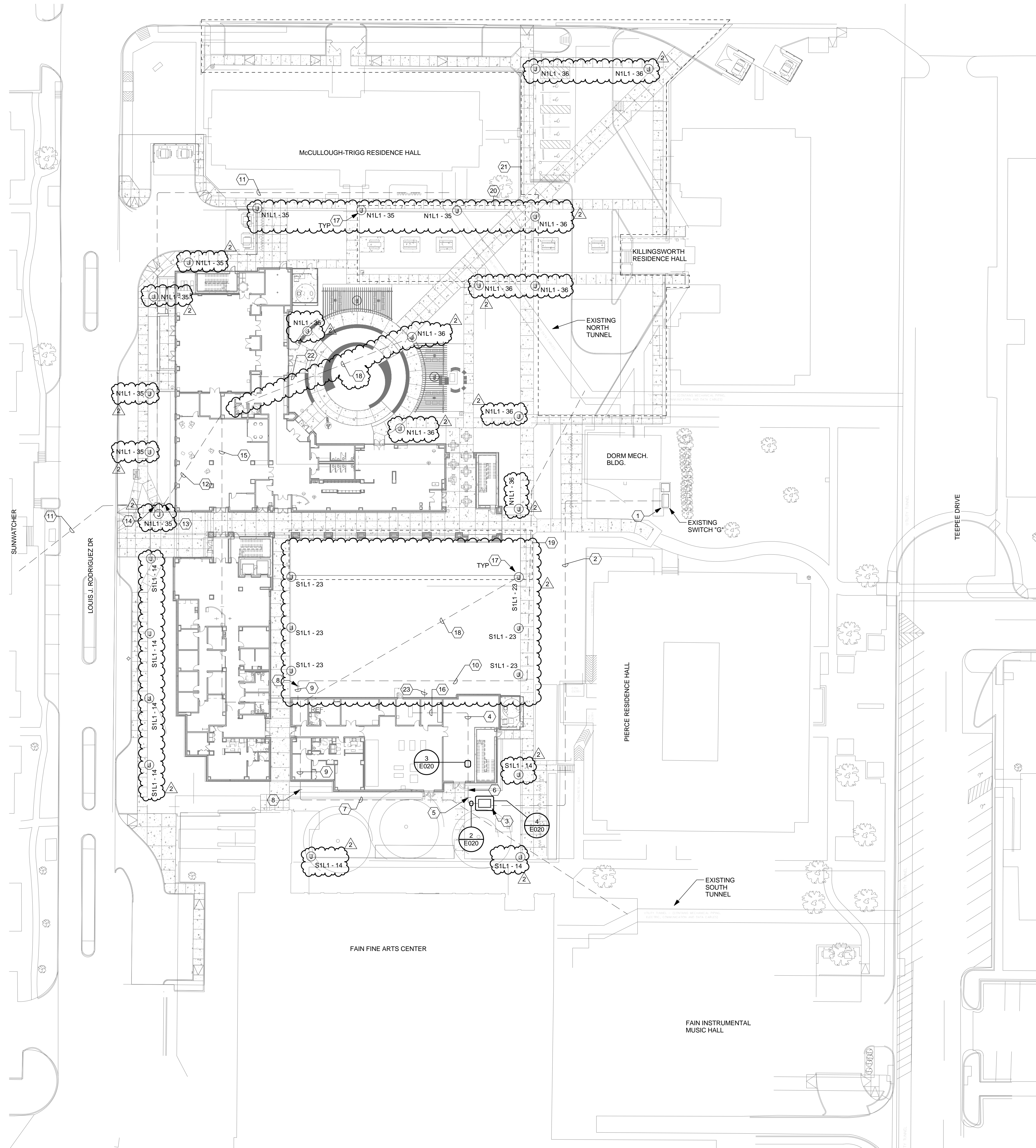
2 TYPICAL FEEDER DUCTBANK BP2  
SCALE: NONE



3 TYPICAL TRENCH WITH CONDUIT BP2  
SCALE: NONE



4 TRANSFORMER GROUNDING DETAIL BP2  
SCALE: NONE



1 ELECTRICAL SITE PLAN  
SCALE: 1" = 30'-0"

## SHEET NOTES:

1. REFER TO SHEETS E001 AND E002 FOR ELECTRICAL SYMBOL, LEGEND AND GENERAL NOTES.
2. REFER TO THE SPECIFICATIONS.
3. REFER TO FEEDER RISER DIAGRAM FOR ADDITIONAL INFORMATION.
4. REFER TO COMMUNICATION RISER DIAGRAM FOR ADDITIONAL INFORMATION.

## KEY NOTES:

1. EXISTING MEDIUM VOLTAGE SWITCH. CONNECT NEW FEEDERS. REFER TO FEEDER RISER DIAGRAM ON SHEET E001.
2. UNDERGROUND PRIMARY CONDUITS. INSTALL FEEDER CABLING PER FEEDER RISER DIAGRAM ON SHEET E001.
3. NEW PAD-MOUNTED TRANSFORMER. INSTALL TRANSFORMER ON PAD AND CONNECT. PROVIDE GROUNDING PER DETAIL.
4. UNDERGROUND SECONDARY SERVICE. REFER TO FEEDER RISER DIAGRAM ON SHEET E001. EXTEND TO EXISTING CONDUITS FROM TRANSFORMER PAD. CONNECT TO EXISTING CONDUITS.
5. NEW CONDUITS FOR FIBER/TV/DATA SERVICE TO MDF. REFER TO COMMUNICATION RISER DIAGRAM ON SHEET E002 FOR ADDITIONAL WORK.
6. CONCRETE ENCASE TO BUILDING SLAB. FEEDERS CAN BE DIRECT BURY UNDER BUILDING.
7. EXISTING CONDUITS FOR FIBER/TV/DATA SERVICE TO SOUTH TUNNEL. REFER TO COMMUNICATION RISER DIAGRAM ON SHEET E002 FOR ADDITIONAL WORK.
8. EXISTING CONDUITS FOR FIBER/TV/DATA SERVICE TO SUNWATCHER. PROTECT CONDUITS DURING CONSTRUCTION.
9. EXISTING CONDUITS FOR FIBER/TV/DATA SERVICE TO NORTH TUNNEL. REFER TO COMMUNICATION RISER DIAGRAM ON SHEET E002 FOR ADDITIONAL WORK.
10. EXISTING CONDUITS FOR FIBER/TV/DATA SERVICE TO SUNWATCHER. PROTECT CONDUITS DURING CONSTRUCTION.
11. EXISTING CONDUITS FOR TV SERVICE TO IDF. REFER TO COMMUNICATION RISER DIAGRAM ON SHEET E002 FOR ADDITIONAL WORK.
12. NEW CONDUITS FROM MDF TO IDF. REFER TO COMMUNICATION RISER DIAGRAM ON SHEET E002 FOR ADDITIONAL WORK.
13. FIRE PUMP SERVICE. SEE FEEDER RISER DIAGRAM ON SHEET E001.
14. POWER FOR LANDSCAPE LIGHTING. REFER TO LANDSCAPE DRAWINGS FOR EXACT FIXTURE TYPE, LOCATION AND SPECIFICATIONS. CONNECT TO CIRCUIT SHOWN ON PLANS. IF CIRCUIT ISN'T AVAILABLE, CONNECT TO NEXT AVAILABLE CIRCUIT ON THE SAME PANEL INDICATED.
15. (1) 1" CONDUIT TO LIGHT POLE FOR WIRELESS ACCESS POINT (MSU).
16. ALTERNATE NO. 6A, SPEC 01 23 00.
17. LIGHTING AS SHOWN IS PART OF BASE BID. REFER TO ALTERNATE NO. 6A, SPEC 01 23 00.
18. LIGHTING AS SHOWN IS PART OF BASE BID. REFER TO ALTERNATE NO. 6B, SPEC 01 23 00.
19. PROVIDE (5) 1" CONDUITS FOR FUTURE EXTERIOR POWER. TERMINATE INSIDE ELECTRICAL ROOM AND CAP. STUB OUT 5' FROM BUILDING AND CAP.
20. PROVIDE (5) 1" CONDUITS FOR FUTURE EXTERIOR POWER. TERMINATE INSIDE ELECTRICAL ROOM AND CAP. STUB OUT 5' FROM BUILDING AND CAP.

DATE: 09/04/2015

MIDWESTERN STATE  
UNIVERSITY  
3410 TAFT BLVD.  
WICHITA FALLS, TX 76308

## NEW RESIDENCE HALL

3410 TAFT BLVD.  
WICHITA FALLS, TX 76308

CAMPUS  
ENGINEERING, Inc.  
Consulting Engineers  
1331 River Bend Dr.  
Dallas, TX 75247  
214.698.6291  
Reg. No. 1-407731  
Project Number D14-0662.00

TREANOR  
ARCHITECTS  
1700 Pacific Avenue, Suite 2630  
Dallas, TX 75201  
Office: 214.310.1018  
Fax: 214.310.1042  
www.treanorarchitects.com



DRAWN BY: ML  
CHECKED BY: JDC

NO.	DESCRIPTION	DATE
1	IFC	9/04/2015
2	LANDSCAPE	7/07/2016

E020

ELECTRICAL SITE PLAN

TREANOR NO. SL14.003.00B



1. REFER TO SHEETS E001 AND E002 FOR ELECTRICAL SYMBOL LEGEND AND GENERAL NOTES.
2. REFER TO THE SPECIFICATIONS.

MIDWESTERN STATE  
UNIVERSITY  
3410 Taft Blvd.  
Wichita Falls, TX 76308

1. **AV BOX.** REFER TO AUDIO/VISUAL PLANS FOR EXACT LOCATION, MOUNTING HEIGHT AND SPECIFICATIONS.
2. **WALL MOUNTED SECURITY IP CAMERA.** REFER TO ELECTRICAL AND MECHANICAL PLANS FOR EXACT LOCATION, MOUNTING HEIGHTS AND REQUIREMENTS.
3. **PROVIDE AND INSTALL DUPLEX RECEPTACLE IN EACH ROOM FOR CONNECTION OF VIDEO MONITOR ON DRAWINGS. REFER TO COMMUNICATION SPECIFICATION 27 40 00 (AUDIO AND VIDEO SYSTEMS) FOR EXACT LOCATION AND REQUIREMENTS FOR BOX SPECIFICATION AND MOUNTING REQUIREMENTS.**
4. **WIRE FOR FUTURE CARD READER ACCESS.** PROVIDE AND INSTALL CONDUIT FOR FUTURE ACCESS.
5. **CEILING MOUNTED VIDEO PROJECTOR WITH CEILING RECESSED ENCLOSURE.** PROVIDE QUAD OUTLET AT EACH PROJECTOR LOCATION. PROVIDE 12" MIN. BOX ABOVE NEAREST LAY-IN CEILING. REFER TO AUDIO VISUAL DATA DRAWINGS FOR EXACT LOCATION AND MOUNTING HEIGHTS.
6. **SCREEN FOR VIDEO PROJECTION.** PROVIDE POWER FOR PROJECTION SCREEN. REFER TO AUDIO VISUAL DATA DRAWINGS FOR EXACT LOCATION AND MOUNTING HEIGHTS.
7. **SCENE LIGHTING.** REFER TO LANDSCAPE DRAWINGS FOR EXACT FIXTURE TYPE, LOCATION AND SPECIFICATIONS. CONNECT TO CIRCUIT ON ONE OR MORE AVAILABLE CIRCUITS. IF AVAILABLE, CONNECT TO NEXT AVAILABLE CIRCUIT ON THE SAME PANEL, INDICATED.

3410 TAFT BLVD.  
WICHITA FALLS, TX 76308

331 River Bend Dr.  
Dallas, TX 75247  
214.696.6291  
[www.camposengineering.com](http://www.camposengineering.com)  
Reg. No. F-001731  
Project Number D14-0662.00

1700 Pacific Avenue, Suite 2630  
Dallas, TX 75201  
Office: 214.310.1018  
Fax: 214.310.1042  
[www.treanorarchitects.com](http://www.treanorarchitects.com)



REVISIONS		
NO.	DESCRIPTION	DATE
1	ADDENDUM 1	5/28/2015
2	ADDENDUM 2	6/05/2015
3	IFC	9/04/2015
4	ASI 004	3/03/2016
5	LANDSCAPE	7/07/2016

TREANOR NO.	SL14.003.00B
-------------	--------------



DATE PRINTED: 7/7/2016 4:27:52 PM  
FILE PATH: C:\Temp\MSU-MEP\_MLICEAGA.MT



SHEET NOTES:

1. REFER TO SHEETS E001 AND E002 FOR ELECTRICAL SYMBOL LEGEND AND GENERAL NOTES.
2. REFER TO THE SPECIFICATIONS.

KEY NOTES:

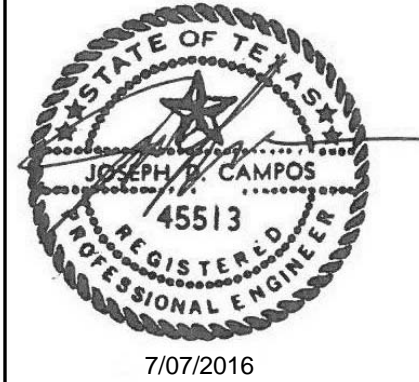
1. WALL MOUNTED SECURITY IP CAMERA. REFER TO TV SECURITY PLANS FOR EXACT SPECIFICATIONS, MOUNTING HEIGHTS AND REQUIREMENTS.
2. WIRE FOR FUTURE CARD READER ACCESS. PROVIDE WITH BLANK COVERPLATE.
3. POWER FOR ALARM BELL OUTSIDE. VERIFY EXACT LOCATION AND SPECIFICATIONS. CONNECT TO CIRCUIT SHOWN ON PLANS. IF CIRCUIT ISNT AVAILABLE, CONNECT TO NEXT AVAILABLE CIRCUIT ON THE SAME PANEL INDICATED.
4. POWER FOR LANDSCAPE LIGHTING. REFER TO LANDSCAPE DRAWINGS FOR EXACT FIXTURE TYPE, LOCATION AND SPECIFICATIONS. CONNECT TO CIRCUIT SHOWN ON PLANS. IF CIRCUIT ISNT AVAILABLE, CONNECT TO NEXT AVAILABLE CIRCUIT ON THE SAME PANEL INDICATED.
5. COMBINATION STARTER AND CONNECT TO 3HP IRRIGATION PUMP. PROVIDE AND INSTALL ALL NECESSARY CONTROL, WIRING AND CONDUIT FOR A COMPLETE SYSTEM. COORDINATE WITH STORM WATER RECLAMATION VENDOR AND OR IRRIGATION CONTRACTOR FOR EXACT LOCATION AND ELECTRICAL REQUIREMENTS.
6. PROVIDE AND INSTALL DUPLEX RECEPTACLE IN FLOOR BOX AND CONNECT TO CIRCUIT AS SHOWN ON DRAWINGS. REFER TO COMMUNICATION SPECIFICATION 27.40.00 (AUDIO AND VIDEO SYSTEMS) AND COMMUNICATION DRAWINGS FOR BOX SPECIFICATION AND MOUNTING REQUIREMENTS.
7. PROVIDE AND INSTALL RECEPTACLE FOR GARBAGE DISPOSAL MOUNTED AT 18" AFF. COORDINATE WITH ARCHITECTURAL DRAWINGS FOR EXACT LOCATION AND MOUNTING HEIGHT OF SWITCH.
8. LIGHTING AS SHOWN IS ALTERNATE BID. REFER TO ALTERNATE NO. 6A. SPEC 01.23.00.
9. PROVIDE AND INSTALL DUCT MOUNTED SMOKE DETECTOR AND CORRESPONDING FIRE ALARM RELAY.
10. PROVIDE AND INSTALL RETRACTABLE CORD RECEPTACLE. COORDINATE WITH ARCHITECTURAL DRAWINGS FOR EXACT REQUIREMENTS, LOCATION, MOUNTING HEIGHT, AND SPECIFICATIONS.
11. PROVIDE AND INSTALL RECEPTACLE MOUNTED HORIZONTALLY IN BACKSLASH. REFER TO ARCHITECTURAL DRAWINGS FOR EXACT LOCATION AND MOUNTING HEIGHT.
12. MOUNT (1) RECEPTACLE AND (1) DATA AT +60" AFF BEHIND TV AND (1) RECEPTACLE AND (1) DATA AT +24" AFF. COORDINATE WITH ARCHITECTURAL DRAWINGS FOR EXACT LOCATION AND HEIGHT PRIOR TO ROUGH-IN.

DATE: 09/04/2015  
MIDWESTERN STATE UNIVERSITY  
3410 TAFT BLVD.  
WICHITA FALLS, TX 76308

NEW RESIDENCE HALL  
3410 TAFT BLVD.  
WICHITA FALLS, TX 76308

CAMPUS ENGINEERING, Inc.  
Consulting Engineers  
1331 River Bend Dr.  
Dallas, TX 75247  
214.696.6291  
www.campusengineering.com  
Reg. No. F-407731  
Project Number D14-0662.00

TREANOR ARCHITECTS  
1700 Pacific Avenue, Suite 2650  
Dallas, TX 75201  
Office: 214.310.1018  
Fax: 214.310.1042  
www.treanorarchitects.com

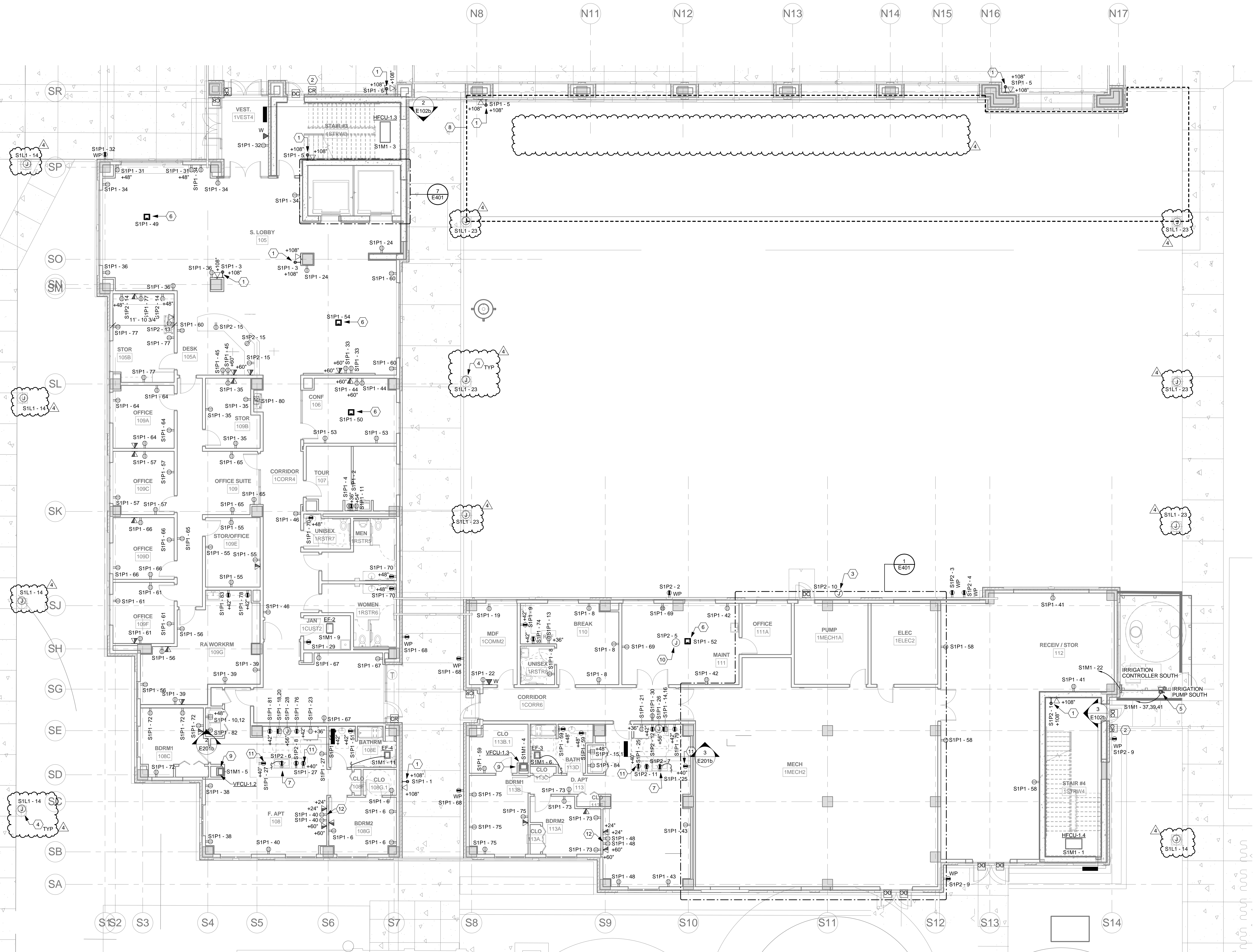


DRAWN BY:	ML	
CHECKED BY:	JDC	
REVISIONS		
NO.	DESCRIPTION	DATE
1	ADDENDUM 1	5/28/2015
2	ADDENDUM 2	6/05/2015
3	IFC	9/04/2015
4	LANDSCAPE	7/07/2016

E101b

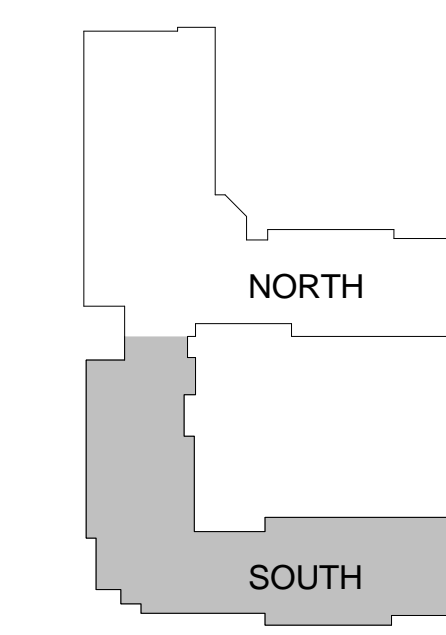
ELECTRICAL 1ST FLOOR AREA SOUTH

TREANOR NO. SL14.003.00B



1 ELECTRICAL 1ST FLOOR AREA SOUTH  
SCALE: 1/8" = 1'-0"

KEY PLAN



<div>Switchboard: MSWB</div> <div>Location: ELEC 1ELEC2 Supplied From: 1500 KVA XFMR Mounting: FLOOR Enclosure: NEMA 1</div> <div>Volts: 120/208 Wye Phases: 3 Wires: 4</div> <div>A.I.C. Rating: 65K Mains Type: MCB Mains Rating: 4000 A MCB Rating: 4000 A</div>						
CKT	CIRCUIT DESCRIPTION	# of Poles	Frame Size	Trip Rating	Load VA	REMARKS
1	S1L1	3	200 A	200 A	15728	
2	S1P1	3	200 A	200 A	66718	
3	S1P2	3	200 A	200 A	3510	
4	S1M1	3	200 A	200 A	43838	
5	N1DP	3	800 A	600 A	70753	
6	N2DP	3	800 A	600 A	206285	
7	S2DP	3	800 A	600 A	160507	
8	N3DP	3	800 A	600 A	206607	
9	S3DP	3	800 A	600 A	160829	
10	N4DP	3	800 A	600 A	206285	
11	S4DP	3	800 A	600 A	160507	
12	N5DP	3	800 A	800 A	227873	
13	S5DP	3	800 A	600 A	177969	
14	AHU-1 RETURN	3	200 A	100 A	16644	
15	AHU-1 SUPPLY	3	200 A	175 A	30407	
16	SPD	3	-	-	0	SEE NOTE 1.
17						
18						
19						
20						
					TOTAL CONNECTED LOAD	1754460
					TOTAL DEMAND LOAD	1417340
NOTES: 1. SIZE WIRE AND CIRCUIT BREAKER PER MANUFACTURER'S RECOMMENDATIONS.						

Branch Panel: S1M1				Location: ELEC 1ELEC2				Volts: 120/208 Wye				A.I.C. Rating: 30K			
				Supply From: MSWB				Phases: 3				Mains Type: MLO			
				Mounting: Surface				Wires: 4				Mains Rating: 200 A			
				Enclosure: Type 1											
												Number of Sections: 1			
Notes:															
CKT	Circuit Description	Trip	Poles	A		B		C		Poles	Trip	Circuit Description		CKT	
1	HFCU-1.4	20 A	1	61 VA	1656 VA					1	20 A	CDP-1 MECH 1MECH2	2		
3	HFCU-1.3	20 A	1			161 VA	600 VA			1	20 A	VFCU-1.3	4		
5	VFCU-1.2	20 A	1					600 VA	1218 VA	1	20 A	EF-3	6		
7	B-1	20 A	1	1560 VA	0 VA					2	20 A	HWRP-1	8		
9	EF-2	20 A	1			925 VA	0 VA			--	--	--	10		
11	EF-4	20 A	1					1218 VA	1560 VA	1	20 A	B-3	12		
13	HWP-B.1	20 A	2	624 VA	624 VA					2	20 A	HWP-B.2	14		
15	--	--	--			624 VA	624 VA			--	--	--	16		
17	SP-1	20 A	1					1920 VA	1920 VA	1	20 A	HWG-2	18		
19	HWP-HWG3	20 A	1	1920 VA	1920 VA					1	20 A	HVAC CONTROL PANEL 'A'	20		
21	B-2	20 A	1			1560 VA	1920 VA			1	20 A	IRRIGATION CONTROLLER SOUTH	22		
23	HWP-HWG.2	20 A	2					624 VA					24		
25	--	--	--	624 VA	624 VA					2	20 A	HWP-B.3	26		
27	HWG-1	20 A	1			1920 VA	624 VA			--	--	--	28		
29	--	--	--					1082 VA		3	20 A	HWP-1	30		
31	--	--	--		1082 VA					--	--	--	32		
33	HWP-HWG.1	20 A	2			624 VA	1082 VA			--	--	--	34		
35	--	--	--					624 VA	1082 VA	3	30 A	HWP-2	36		
37	IRRIGATION PUMP SOUTH	30 A	3	1132 VA	1082 VA					--	--	--	38		
39	--	--	--			1132 VA	1082 VA			--	--	--	40		
41	--	--	--					1132 VA	1691 VA	3	20 A	JOCKEY PUMP	42		
43	--	--	--		1691 VA					--	--	--	44		
45	--	--	--			1691 VA				--	--	--	46		
47	--	--	--										48		
49	--	--	--										50		
51	--	--	--										52		
53	--	--	--										54		
55	--	--	--										56		
57	--	--	--										58		
59	--	--	--										60		
61	--	--	--										62		
63	--	--	--										64		
65	--	--	--										66		
67	--	--	--										68		
69	--	--	--										70		
71	--	--	--										72		
73	--	--	--										74		
75	--	--	--										76		
77	--	--	--										78		
79	--	--	--										80		
81	--	--	--										82		
83	--	--	--										84		
				Total Load:	14599 VA	14568 VA	14670 VA								
				Total Amps:	122 A	121 A	122 A								
Legend:															
Load Classification				Connected Load		Demand Factor		Estimated Demand		Panel Totals					
Appliance - Dwelling Unit				4992 VA		75.00%		3744 VA							
HVAC				10073 VA		100.00%		10073 VA		Total Conn. Load: 43838 VA					
Motor				8950 VA		109.48%		9799 VA		Total Est. Demand: 43438 VA					
Other				19823 VA		100.00%		19823 VA		Total Conn.: 122 A					
										Total Est. Demand: 121 A					
Notes:															

Branch Panel: S1P1					Volts: 120/208 Wye			A.I.C. Rating: 30K			
Location: ELEC 1ELEC2					Phases: 3			Mains Type: MLO			
Supply From: MSWB					Wires: 4			Mains Rating: 200 A			
Mounting: Surface											
Enclosure: Type 1											
Number of Sections: 1											
Notes:											
CKT	Circuit Description	Trip	Poles	A	B	C	Poles	Trip	Circuit Description	CKT	
1	SECURITY CAMERA	20 A	1	22 VA	180 VA		1	20 A	GFI RECEPTACLE TOUR 107	2	
3	SECURITY CAMERAS	20 A	1		88 VA	500 VA		1	FRIDGE TOUR 107	4	
5	SECURITY CAMERAS	20 A	1				88 VA	720 VA	RECEPTACLES BDRM2 108G	6	
7	FACP	20 A	1	1000 VA	1740 VA			1	RECEPTACLES ROOMS 110, 1R1STR7	8	
9	COFFEE MAKER BREAK 110	20 A	1		1200 VA	2496 VA	2	30 A	DRYER LAUNDRY 108B	10	
11	MICROWAVE TOUR 107	20 A	1				1000 VA	2496 VA	-- --	12	
13	REFRIGERATOR BREAK 110	20 A	1	180 VA	4000 VA		2	50 A	RANGE D. APT 113	14	
15	DRYER LAUNDRY 113F	30 A	2		2496 VA	4000 VA	-- --	-- --	RANGE F. APT 108	16	
17	--	--	--				2496 VA	4000 VA	-- --	18	
19	RECEPTACLE MDF 1COMM2	20 A	1	180 VA	4000 VA		-- --	-- --	-- --	20	
21	REFRIGERATOR D. APT 113	20 A	1		180 VA	180 VA	1	20 A	RECEPTACLE MDF 1COMM2	22	
23	REFRIGERATOR F. APT 108	20 A	1			180 VA	360 VA	1	RECEPTACLE S. LOBBY 105	24	
25	RECEPTACLE D. APT 113	20 A	1	360 VA	180 VA		1	20 A	HOOD - D. APT 113	26	
27	RECEPTACLE F. APT 108	20 A	1		540 VA	180 VA	1	20 A	HOOD - F. APT 108	28	
29	RECEPTACLE JAN 1CUST2	20 A	1			180 VA	180 VA	1	RECEPTACLE CORRIDOR 1CORR6	30	
31	RECEPTACLES S. LOBBY 105	20 A	1	360 VA	360 VA		1	20 A	RECEPTACLES ROOM 1VEST4	32	
33	RECEPTACLES S. LOBBY 105	20 A	1		360 VA	720 VA	1	20 A	RECEPTACLES S. LOBBY 105	34	
35	RECEPTACLES STOR 108B	20 A	1			720 VA	540 VA	1	RECEPTACLES S. LOBBY 105	36	
37	RECEPTACLES PUMP 1MECH1A	20 A	1	360 VA	360 VA		1	20 A	RECEPTACLES F. APT 108	38	
39	RECEPTACLES RA WORKRM 109G	20 A	1		540 VA	540 VA	1	20 A	RECEPTACLES F. APT 108	40	
41	RECEPTACLES RECEIV / STOR 112	20 A	1			360 VA	360 VA	1	RECEPTACLES MAINT 111	42	
43	RECEPTACLES D. APT 113	20 A	1	360 VA	360 VA		1	20 A	RECEPTACLES CONF 106	44	
45	RECEPTACLES DESK 105A	20 A	1		360 VA	360 VA	1	20 A	RECEPTACLES CORRIDOR 1CORR4	46	
47	RECEPTACLES ELEC 1ELEC2	20 A	1			360 VA	540 VA	1	RECEPTACLES D. APT 113	48	
49	FLOOR BOX S. LOBBY 105	20 A	1	360 VA	360 VA		1	20 A	FLOOR BOX CONF 106	50	
51	RECEPTACLES BATHRM 108E	20 A	1		360 VA	360 VA	1	20 A	FLOOR BOX MAINT 111	52	
53	RECEPTACLES CONF 106	20 A	1			360 VA	360 VA	1	FLOOR BOX S. LOBBY 105	54	
55	RECEPTACLES STOR/OFFICE 109E	20 A	1	720 VA	540 VA		1	20 A	RECEPTACLES RA WORKRM 109G	56	
57	RECEPTACLES OFFICE 109C	20 A	1		720 VA	540 VA	1	20 A	RECEPTACLES RECEIV / STOR 112	58	
59	RECEPTACLES ROOMS 113D, 113B.1	20 A	1			540 VA	540 VA	1	RECEPTACLES ROOMS 105A, 105	60	
61	RECEPTACLES OFFICE 109F	20 A	1	720 VA	540 VA		1	20 A	RECEPTACLES MECH 1MECH2	62	
63	RECEPTACLES OFFICE 111A	20 A	1		540 VA	720 VA	1	20 A	RECEPTACLES OFFICE 109A	64	
65	RECEPTACLES OFFICE SUITE 109	20 A	1			720 VA	720 VA	1	RECEPTACLES OFFICE 109D	66	
67	RECEPTACLES LOUNGE 1CORR5	20 A	1	540 VA	540 VA		1	20 A	EXTERIOR RECEPTACLES	68	
69	RECEPTACLES MAINT 111	20 A	1		540 VA	540 VA	1	20 A	RCPTS 1R1STR5, 1R1STR4, 1R1STR6	70	
71	RECEPTACLES MECH 1MECH2	20 A	1				540 VA	720 VA	RECEPTACLES BDRM 108C	72	
73	RECEPTACLES BDRM2 113A	20 A	1	720 VA	1400 VA		1	20 A	MICROWAVE BREAK 110	74	
75	RECEPTACLES ROOMS 113B, 113B.1	20 A	1		720 VA	1200 VA		1	COFFEE MAKER F. APT 108	76	
77	RECEPTACLES STOR 105B	20 A	1			720 VA	1200 VA	1	COFFEE MAKER RA WORKRM 109G	78	
79	MICROWAVE D. APT 113	20 A	1	1400 VA	1500 VA		1	20 A	FOUNTAIN CORRIDOR 1CORR4	80	
81	MICROWAVE F. APT 108	20 A	1		1400 VA	1500 VA	1	20 A	WASHER LAUNDRY 108B	82	
83	MICROWAVE RA WORKRM 109G	20 A	1			1400 VA	1500 VA	1	WASHER LAUNDRY 113F	84	
Total Load:				23342 VA	23880 VA	23900 VA					
Total Amps:				195 A	200 A	200 A					
Legend:											
Load Classification				Connected Load	Demand Factor	Estimated Demand	Panel Totals				
Power				1818 VA	100.00%	1818 VA					
Receptacle				30720 VA	66.28%	20360 VA	Total Conn. Load: 70122 VA				
Kitchen Equipment				27600 VA	65.00%	17940 VA	Total Est. Demand: 50102 VA				
Dryers				9984 VA	100.00%	9984 VA	Total Conn.: 195 A				
							Total Est. Demand: 139 A				
Notes:											
30A CIRCUIT BREAKER: 3#10, 1#10G, 3/4"C											
50A CIRCUIT BREAKER: 3#6, 1#10G, 3/4"C											

Branch Panel: S1L1						A.I.C. Rating: 30K				
Location: ELEC 1ELEC2				Volts: 120/208 Wye		Mains Type: MLO				
Supply From: MSWB				Phases: 3		Mains Rating: 200 A				
Mounting: Surface				Wires: 4						
Enclosure: Type 1										
				Number of Sections: 1						
Notes:										
BOLD TEXT INDICATES NEW CIRCUIT.										
CKT	Circuit Description	Trip	Poles	A	B	C	Poles	Trip	Circuit Description	CKT
1	FANS	20 A	1	114 VA	221 VA		1	20 A	ROOM 113F, 113D, 113B, 1, 113B	2
3	FANS	20 A	1		114 VA	228 VA	1	20 A	Room 1RSTR5, 1RSTR4	4
5	Room 108B, 108E, 108G, 1, 108	20 A	1			185 VA	240 VA	1	Room 1CORR4, 1CUST2, 1RSTR6	6
7	Other STOR/OFFICE 109E	20 A	1	256 VA	260 VA		1	20 A	S. LOBBY 105	8
9	1COMM2, 111	20 A	1		259 VA	294 VA	1	20 A	EXTERIOR LIGHTING	10
11	1MECH1A, 1ELEC2	20 A	1			263 VA	306 VA	1	Room 107, 106	12
13	1RSTR7, 110, 111A	20 A	1	320 VA	994 VA		1	20 A	LANDSCAPE LIGHTING	14
15	Other Room 109F, 109C, 105B	20 A	1		391 VA	488 VA	1	20 A	ELEVATOR PIT LIGHTING	16
17	ROOM 113	20 A	1			385 VA	481 VA	1	CORRIDOR 1CORR6	18
19	EXTERIOR LIGHTING	20 A	1	500 VA	510 VA		1	20 A	Room 109D, 109A, 109	20
21	S. LOBBY 105	20 A	1		496 VA	503 VA	1	20 A	Room 109G, 109	22
23	LANDSCAPE LIGHTING	20 A	1			852 VA	529 VA	1	CORRIDOR 1CORR4	24
25	Lighting F. APT 108	20 A	1	545 VA	586 VA		1	20 A	RECEIV / STOR 112	26
27	Other S. LOBBY 105	20 A	1		552 VA	1029 VA	1	20 A	Room 105A, 105, 1VEST4	28
29	STAIR #4 1STRW4	20 A	1			576 VA	704 VA	1	STAIR #3 1STRW3	30
31	EXTERIOR LIGHTING	20 A	1	625 VA	669 VA		1	20 A	S. LOBBY 105	32
33	MECH 1MECH2	20 A	1		934 VA	200 VA	1	20 A	LIGHTING CONTROLLER	34
35	LOUNGE 1CORR5	20 A	1			660 VA				36
37										38
39										40
41										42
				Total Load:	5601 VA	5488 VA	5182 VA			
				Total Amps:	47 A	46 A	43 A			
Legend:										
Load Classification				Connected Load	Demand Factor	Estimated Demand	Panel Totals			
Lighting				12813 VA	125.00%	16016 VA	Total Conn. Load: 16865 VA			
Lighting - Exterior				3265 VA	125.00%	4081 VA	Total Est. Demand: 20894 VA			
Other				192 VA	100.00%	192 VA	Total Conn.: 47 A			
Receptacle				360 VA	100.00%	360 VA	Total Est. Demand: 58 A			
Spare				200 VA	100.00%	200 VA				
Lighting - Exit Sign				35 VA	125.00%	44 VA				
Notes:										

Branch Panel: S1P2					Location: ELEC 1ELEC2			Volts: 120/208 Wye			A.I.C. Rating: 30K		
					Supply From: MSWB			Phases: 3			Mains Type: MLO		
					Mounting: Surface			Wires: 4			Mains Rating: 200 A		
					Enclosure: Type 1								
					Number of Sections: 1								
Notes:													
CKT	Circuit Description	Trip	Poles	A	B	C	Poles	Trip	Circuit Description	CKT			
1	SECURITY CAMERA STAIR #4 1STRW4	20 A	1	22 VA 180 VA						2			
3	MOVIE WALL EQUIP RECEPTACLE	20 A	1		180 VA 180 VA			1	20 A	EXTERIOR RECEPTACLE	4		
5	RETRACTABLE CORD MANTT 111	20 A	1			360 VA 864 VA		1	20 A	MOVIE WALL EQUIP RECEPTACLE	4		
7	GARBAGE DISPOSAL D. APT 113	20 A	1	864 VA 1800 VA				1	20 A	GARBAGE DISPOSAL F. APT 108	6		
9	EXTERIOR RECEPTACLE	20 A	1		360 VA 500 VA			1	20 A	DISHWASHER F. APT 108	8		
11	DISHWASHER D. APT 113	20 A	1			1800 VA 1200 VA		1	20 A	FIRE ALARM BELL POWER	10		
13	COPIER STOR 105B	20 A	1	1500 VA 360 VA				1	20 A	COFFEE MAKER D. APT 113	12		
15	RECEPTACLES DESK 105A	20 A	1		540 VA					RECEPTACLES STOR 105B	14		
17											16		
19											18		
21											20		
23											22		
25											24		
27											26		
29											28		
31											30		
33											32		
35											34		
37											36		
39											38		
41											40		
43											42		
45											44		
47											46		
49											48		
51											50		
53											52		
55											54		
57											56		
59											58		
61											60		
63											62		
65											64		
67											66		
69											68		
71											70		
73											72		
75											74		
77											76		
79											78		
81											80		
83											82		
Total Load:				4726 VA	1760 VA	4224 VA							
Total Amps:				43 A	15 A	38 A							
Legend:													
Load Classification		Connected Load	Demand Factor	Estimated Demand	Panel Totals								
Power		522 VA	100.00%	522 VA	Total Conn. Load:		10710 VA						
Receptacle		3660 VA	100.00%	3660 VA	Total Est. Demand:		8752 VA						
Kitchen Equipment		6528 VA	70.00%	4570 VA	Total Conn.:		30 A						
					Total Est. Demand:		24 A						
Notes:													



Branch Panel: N1P1									
Location: ELEC 1ELEC1									
Supply From: N1DP									
Mounting: Surface									
Enclosure: Type 1									
Notes:									
BOLD TEXT INDICATES NEW CIRCUIT.									
Notes:									
BOLD TEXT INDICATES NEW CIRCUIT.									
Notes:									
BOLD TEXT INDICATES NEW CIRCUIT.									
Notes:									
BOLD TEXT INDICATES NEW CIRCUIT.									
Notes:									
BOLD TEXT INDICATES NEW CIRCUIT.									
Notes:									
BOLD TEXT INDICATES NEW CIRCUIT.									
Notes:									
BOLD TEXT INDICATES NEW CIRCUIT.									
Notes:									
BOLD TEXT INDICATES NEW CIRCUIT.									
Notes:									
BOLD TEXT INDICATES NEW CIRCUIT.									
Notes:									
BOLD TEXT INDICATES NEW CIRCUIT.									
Notes:									
BOLD TEXT INDICATES NEW CIRCUIT.									
Notes:									
BOLD TEXT INDICATES NEW CIRCUIT.									
Notes:									
BOLD TEXT INDICATES NEW CIRCUIT.									
Notes:									
BOLD TEXT INDICATES NEW CIRCUIT.									
Notes:									
BOLD TEXT INDICATES NEW CIRCUIT.									
Notes:									
BOLD TEXT INDICATES NEW CIRCUIT.									
Notes:									
BOLD TEXT INDICATES NEW CIRCUIT.									
Notes:									
BOLD TEXT INDICATES NEW CIRCUIT.									
Notes:									
BOLD TEXT INDICATES NEW CIRCUIT.									
Notes:									
BOLD TEXT INDICATES NEW CIRCUIT.									
Notes:									
BOLD TEXT INDICATES NEW CIRCUIT.									
Notes:									
BOLD TEXT INDICATES NEW CIRCUIT.									
Notes:									
BOLD TEXT INDICATES NEW CIRCUIT.									
Notes:									
BOLD TEXT INDICATES NEW CIRCUIT.									
Notes:									
BOLD TEXT INDICATES NEW CIRCUIT.									
Notes:									
BOLD TEXT INDICATES NEW CIRCUIT.									
Notes:									
BOLD TEXT INDICATES NEW CIRCUIT.									
Notes:									
BOLD TEXT INDICATES NEW CIRCUIT.									
Notes:									
BOLD TEXT INDICATES NEW CIRCUIT.									
Notes:									
BOLD TEXT INDICATES NEW CIRCUIT.									
Notes:									
BOLD TEXT INDICATES NEW CIRCUIT.									
Notes:									
BOLD TEXT INDICATES NEW CIRCUIT.									
Notes:									
BOLD TEXT INDICATES NEW CIRCUIT.									
Notes:									
BOLD TEXT INDICATES NEW CIRCUIT.									
Notes:									
BOLD TEXT INDICATES NEW CIRCUIT.									
Notes:									
BOLD TEXT INDICATES NEW CIRCUIT.									
Notes:									
BOLD TEXT INDICATES NEW CIRCUIT.									
Notes:									
BOLD TEXT INDICATES NEW CIRCUIT.									
Notes:									
BOLD TEXT INDICATES NEW CIRCUIT.									
Notes:									
BOLD TEXT INDICATES NEW CIRCUIT.									
Notes:									
BOLD TEXT INDICATES NEW CIRCUIT.									
Notes:									
BOLD TEXT INDICATES NEW CIRCUIT.									
Notes:									
BOLD TEXT INDICATES NEW CIRCUIT.									
Notes:									
BOLD TEXT INDICATES NEW CIRCUIT.									
Notes:									
BOLD TEXT INDICATES NEW CIRCUIT.									
Notes:									
BOLD TEXT INDICATES NEW CIRCUIT.									
Notes:									
BOLD TEXT INDICATES NEW CIRCUIT.									
Notes:									
BOLD TEXT INDICATES NEW CIRCUIT.									
Notes:									
BOLD TEXT INDICATES NEW CIRCUIT.									
Notes:									
BOLD TEXT INDICATES NEW CIRCUIT.									
Notes:									
BOLD TEXT INDICATES NEW CIRCUIT.									
Notes:									
BOLD TEXT INDICATES NEW CIRCUIT.									
Notes:									
BOLD TEXT INDICATES NEW CIRCUIT.									
Notes:									
BOLD TEXT INDICATES NEW CIRCUIT.									
Notes:									
BOLD TEXT INDICATES NEW CIRCUIT.									
Notes:									
BOLD TEXT INDICATES NEW CIRCUIT.									
Notes:									
BOLD TEXT INDICATES NEW CIRCUIT.									
Notes:									
BOLD TEXT INDICATES NEW CIRCUIT.									
Notes:									
BOLD TEXT INDICATES NEW CIRCUIT.									
Notes:									
BOLD TEXT INDICATES NEW CIRCUIT.									
Notes:									
BOLD TEXT INDICATES NEW CIRCUIT.									
Notes:									
BOLD TEXT INDICATES NEW CIRCUIT.									
Notes:									
BOLD TEXT INDICATES NEW CIRCUIT.									
Notes:									
BOLD TEXT INDICATES NEW CIRCUIT.									
Notes:									
BOLD TEXT INDICATES NEW CIRCUIT.									
Notes:									
BOLD TEXT INDICATES NEW CIRCUIT.									
Notes:									
BOLD TEXT INDICATES NEW CIRCUIT.									
Notes:									
BOLD TEXT INDICATES NEW CIRCUIT.									
Notes:									
BOLD TEXT INDICATES NEW CIRCUIT.									
Notes:									
BOLD TEXT INDICATES NEW CIRCUIT.									
Notes:									
BOLD TEXT INDICATES NEW CIRCUIT.									
Notes:									
BOLD TEXT INDICATES NEW CIRCUIT.									
Notes:									
BOLD TEXT INDICATES NEW CIRCUIT.									
Notes:									
BOLD TEXT INDICATES NEW CIRCUIT.									
Notes:									
BOLD TEXT INDICATES NEW CIRCUIT.									
Notes:									
BOLD TEXT INDICATES NEW CIRCUIT.									
Notes:									
BOLD TEXT INDICATES NEW CIRCUIT.									
Notes:									
BOLD TEXT INDICATES NEW CIRCUIT.									
Notes:									
BOLD TEXT INDICATES NEW CIRCUIT.									
Notes:									
BOLD TEXT INDICATES NEW CIRCUIT.									
Notes:									
BOLD TEXT INDICATES NEW CIRCUIT.									
Notes:									
BOLD TEXT INDICATES NEW CIRCUIT.									
Notes:									
BOLD TEXT INDICATES NEW CIRCUIT.									
Notes:									
BOLD TEXT INDICATES NEW CIRCUIT.									
Notes:									
BOLD TEXT INDICATES NEW CIRCUIT.									
Notes:									
BOLD TEXT INDICATES NEW CIRCUIT.									
Notes:									
BOLD TEXT INDICATES NEW CIRCUIT.									
Notes:									
BOLD TEXT INDICATES NEW CIRCUIT.									
Notes:									
BOLD TEXT INDICATES NEW CIRCUIT.									
Notes:									
BOLD TEXT INDICATES NEW CIRCUIT.									
Notes:									
BOLD TEXT INDICATES NEW CIRCUIT.									
Notes:									
BOLD TEXT INDICATES NEW CIRCUIT.									
Notes:									
BOLD TEXT INDICATES NEW CIRCUIT.									
Notes:									
BOLD TEXT INDICATES NEW CIRCUIT.									
Notes:									
BOLD TEXT INDICATES NEW CIRCUIT.									
Notes:									
BOLD TEXT INDICATES NEW CIRCUIT.									
Notes:									
BOLD TEXT INDICATES NEW CIRCUIT.									
Notes:									
BOLD TEXT INDICATES NEW CIRCUIT.									
Notes:									
BOLD TEXT INDICATES NEW CIRCUIT.									
Notes:									
BOLD TEXT INDICATES NEW CIRCUIT.									
Notes:									
BOLD TEXT INDICATES NEW CIRCUIT.									
Notes:									
BOLD TEXT INDICATES NEW CIRCUIT.									
Notes:									
BOLD TEXT INDICATES NEW CIRCUIT.									
Notes:									
BOLD TEXT INDICATES NEW CIRCUIT.									
Notes:									
BOLD TEXT INDICATES NEW CIRCUIT.									
Notes:									
BOLD TEXT INDICATES NEW CIRCUIT.									
Notes:									
BOLD TEXT INDICATES NEW CIRCUIT.									
Notes:									
BOLD TEXT INDICATES NEW CIRCUIT.									
Notes:									
BOLD TEXT INDICATES NEW CIRCUIT.									
Notes:									
BOLD TEXT INDICATES NEW CIRCUIT.									
Notes:									
BOLD TEXT INDICATES NEW CIRCUIT.									
Notes:									
BOLD TEXT INDICATES NEW CIRCUIT.									
Notes:									
BOLD TEXT INDICATES NEW CIRCUIT.									
Notes:									
BOLD TEXT INDICATES NEW CIRCUIT.									
Notes:									
BOLD TEXT INDICATES NEW CIRCUIT.									
Notes:									
BOLD TEXT INDICATES NEW CIRCUIT.									
Notes:									
BOLD TEXT INDICATES NEW CIRCUIT.									
Notes:									
BOLD TEXT INDICATES NEW CIRCUIT.									
Notes:									
BOLD TEXT INDICATES NEW CIRCUIT.									
Notes:									
BOLD TEXT INDICATES NEW CIRCUIT.									
Notes:									
BOLD TEXT INDICATES NEW CIRCUIT.									
Notes:									
BOLD TEXT INDICATES NEW CIRCUIT.									
Notes:									
BOLD TEXT INDICATES NEW CIRCUIT.									
Notes:									
BOLD TEXT INDICATES NEW CIRCUIT.									
Notes:									
BOLD TEXT INDICATES NEW CIRCUIT.									
Notes:									
BOLD TEXT INDICATES NEW CIRCUIT.									
Notes:									
BOLD TEXT INDICATES NEW CIRCUIT.									
Notes:									
BOLD TEXT INDICATES NEW CIRCUIT.									
Notes:									
BOLD TEXT INDICATES NEW CIRCUIT.									
Notes:									
BOLD TEXT INDICATES NEW CIRCUIT.									
Notes:									
BOLD TEXT INDICATES NEW CIRCUIT.									
Notes:									
BOLD TEXT INDICATES NEW CIRCUIT.									
Notes:									
BOLD TEXT INDICATES NEW CIRCUIT.									