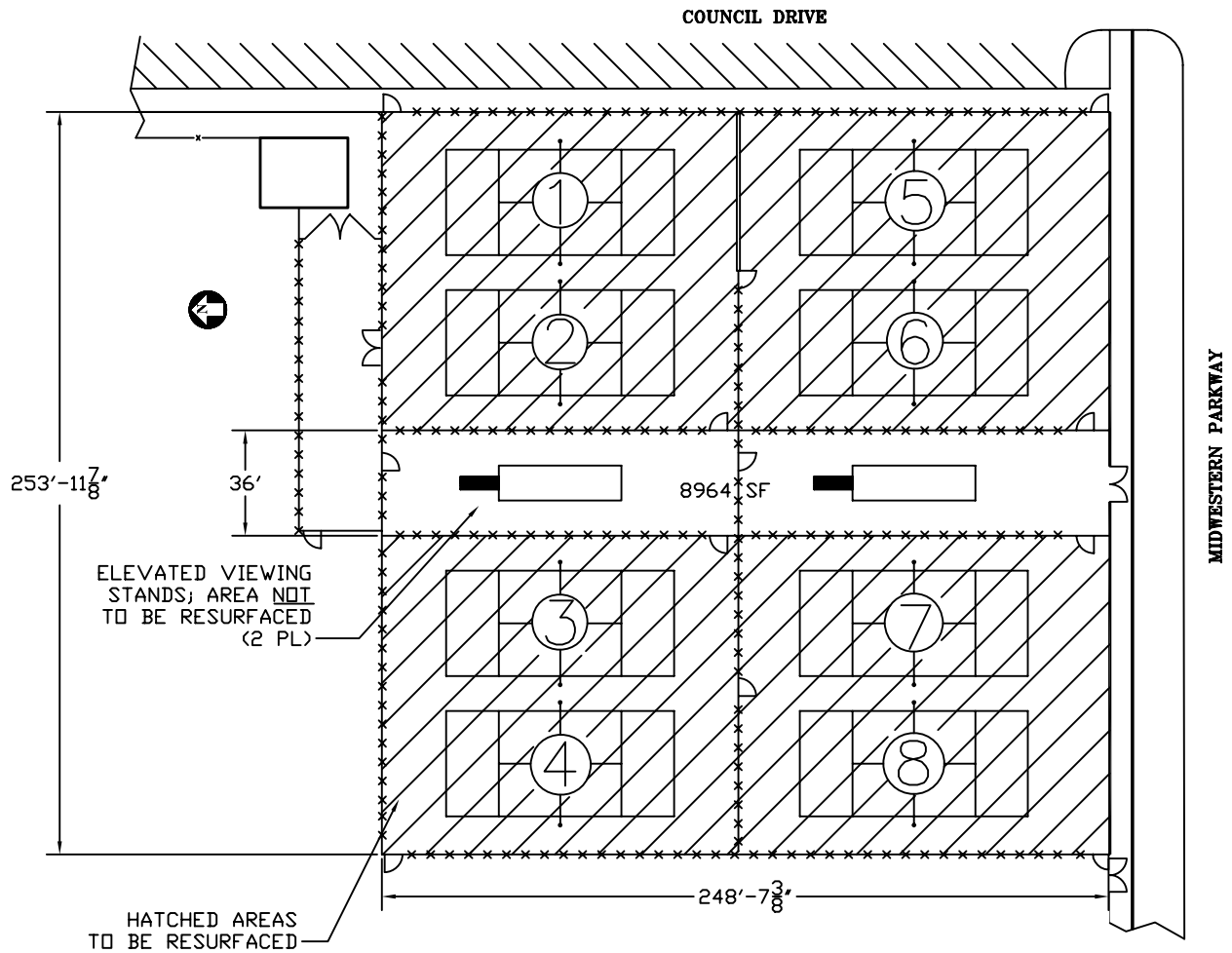


Midwestern State University
RFP 735-22-4359 Tennis Court Resurfacing Project
Appendix E



 **MIDWESTERN STATE UNIVERSITY**
TENNIS COURTS RESURFACING AREA
DATE: 10/15/07 SCALE: 1/84"=1'-0" BY: K.C.O. SH: 1 OF 1