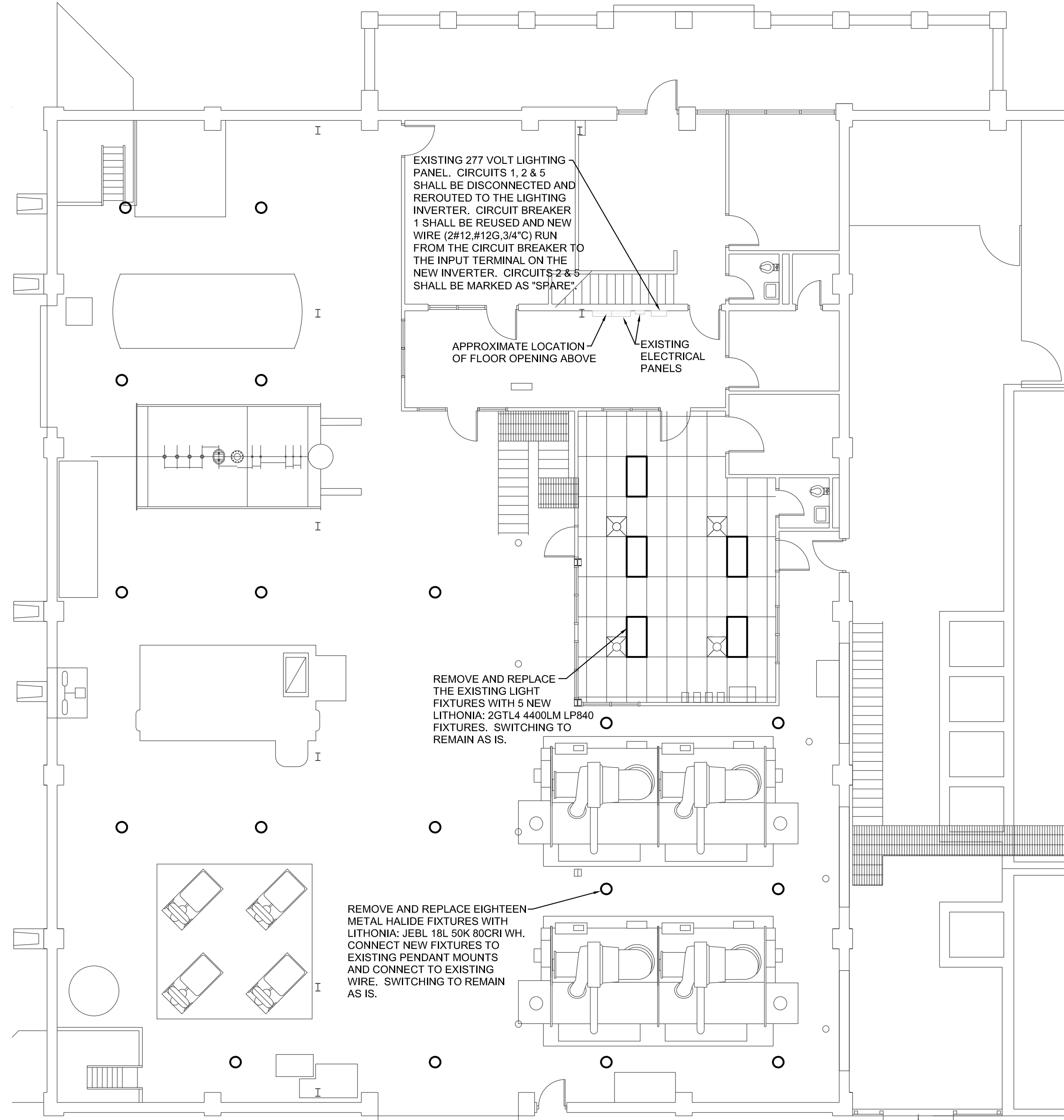


**GENERAL NOTES**

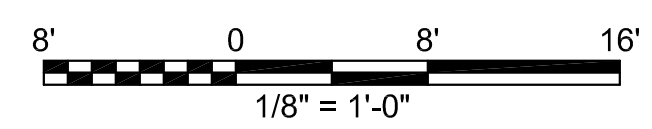
1. CONTRACTOR SHALL COORDINATE ALL ASPECTS OF THE PROJECT WITH THE EXISTING CONDITIONS AT THE CENTRAL PLANT BUILDING.
2. THE INSTALLATION OF THE HIGH BAY LIGHTING SHALL REUSE THE EXISTING LIGHT LOCATIONS, WIRING AND SUPPORT STEMS. CONNECT NEW LIGHTS TO THE STEMS AND MAKE ELECTRICAL CONNECTIONS AS REQUIRED.
3. THE LIGHTING AND INVERTER SYSTEM SHALL BE COMPLETE AND OPERABLE UPON TURN-OVER TO THE MSU STAFF. ALL ASPECTS OF THE INSTALLATION SHALL COMPLY WITH THE CURRENT VERSION OF THE NEC AND ALL LOCAL CODES.
4. REFER TO SEPARATE SPECIFICATIONS THAT INCLUDE, AT A MINIMUM, BIDDING INFORMATION, PROJECT REQUIREMENTS AND ELECTRICAL REQUIREMENTS.



**1 SECOND FLOOR**  
SCALE: 1/8" = 1'-0"



**1 FIRST FLOOR**  
SCALE: 1/8" = 1'-0"



REV	DATE	DESCRIPTION



**MSU TEXAS**  
MIDWESTERN STATE UNIVERSITY

**CENTRAL PLANT BUILDING**

LIGHTING SYSTEM UPGRADE

**Summit**  
CONSULTANTS, INC.  
Texas BPE Registration # F-207  
1300 Summit Avenue  
Suite 500  
Fort Worth, Texas 76102  
Office: 817.878.8784  
Fax: 817.878.4240  
www.summitmap.com

DRAWN BY  
CHECKED BY  
DATE 11/10/22  
PROJECT NO. P22182.00

FLOOR PLANS

**E201**

S:\P22182\_00\_MSU Central Plant Lighting\P22182-E21.dwg - Layout1 11/10/22 14:44:43 Brian SHEET SIZE: AANSI D 24x34