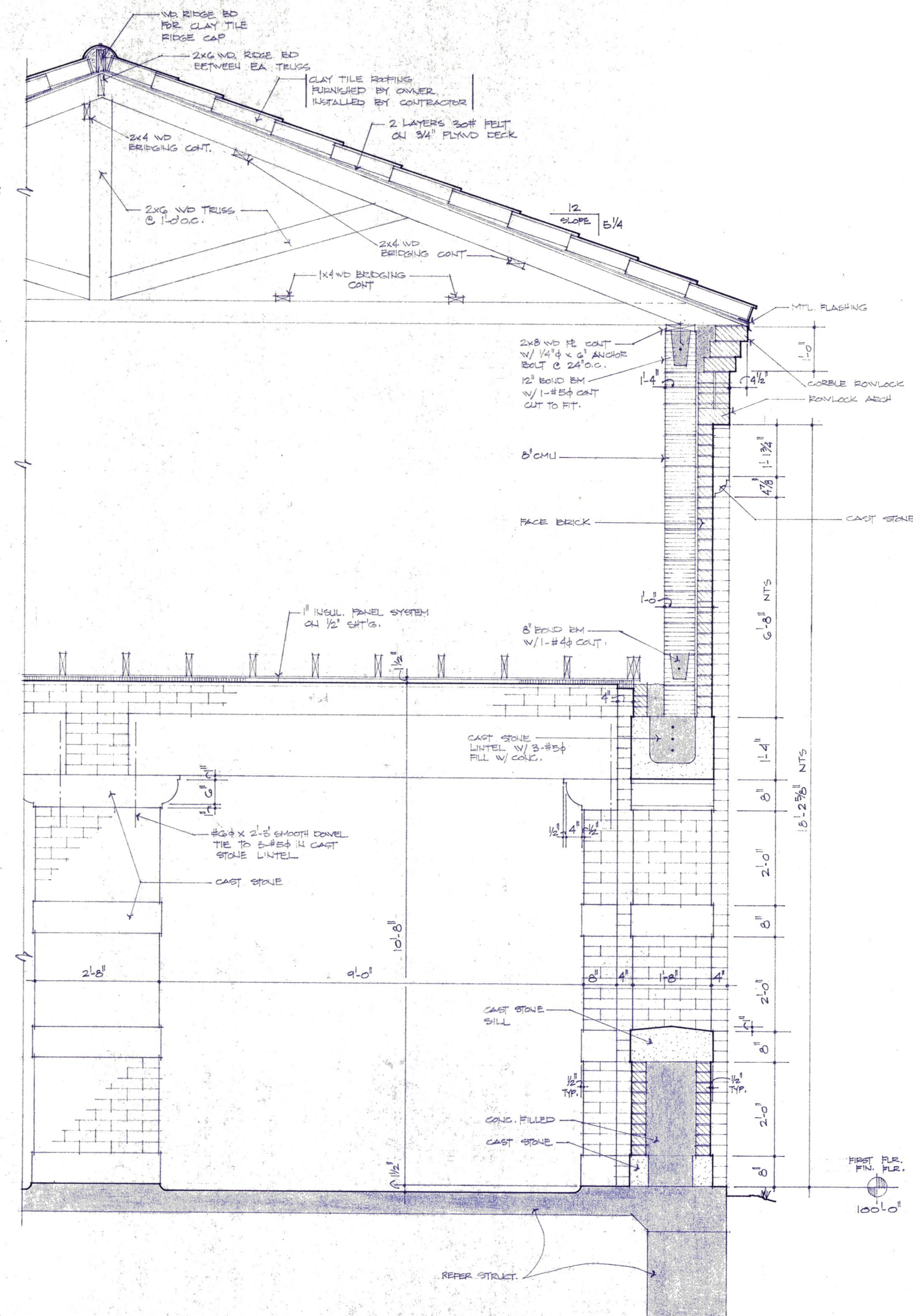


1 ENTRY PORCH SECTION
3/4" = 1'-0"



2 ENTRY PORCH SECTION
3/4" = 1'-0"



Daugherty & Glover, Inc.
ARCHITECTS & ENGINEERS
7500 WICHITA FALLS, TEXAS 76799
817/581-5015

A New Maintenance Facility
DANIEL BUILDING
Midwestern State University
Wichita Falls, Texas

SSS

DRAWN: HACKETT, J.

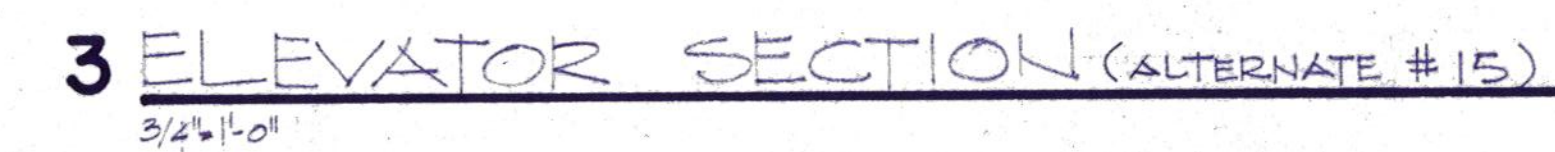
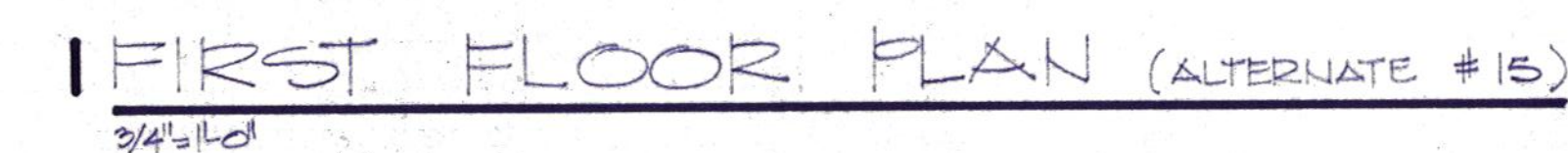
CHECKED: DAUGHERTY

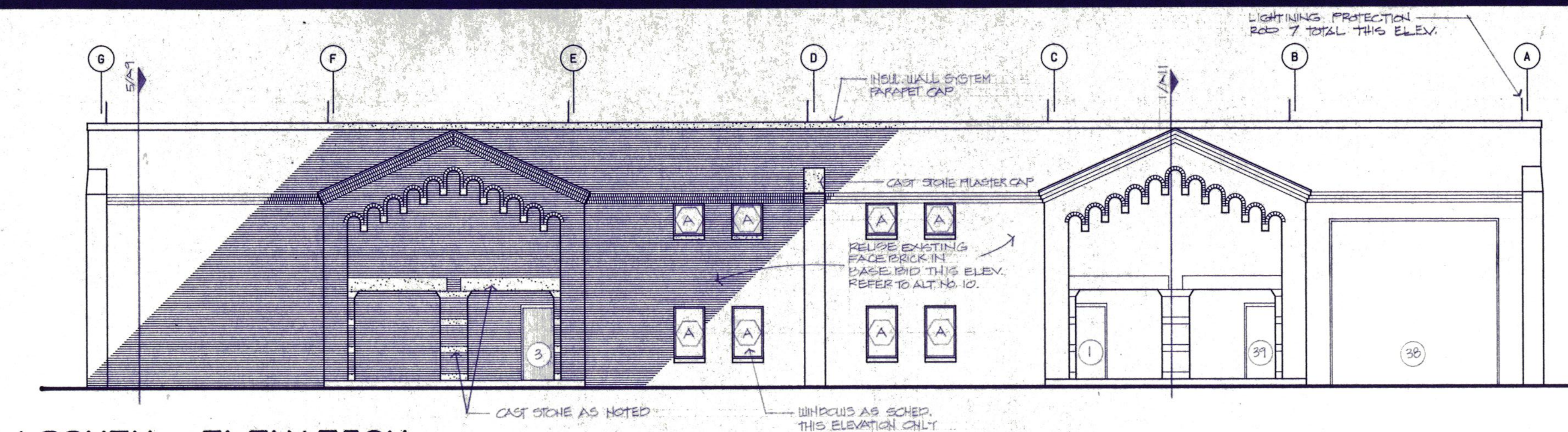
DATE: JULY 11, 1989

JOB NUMBER: 8807

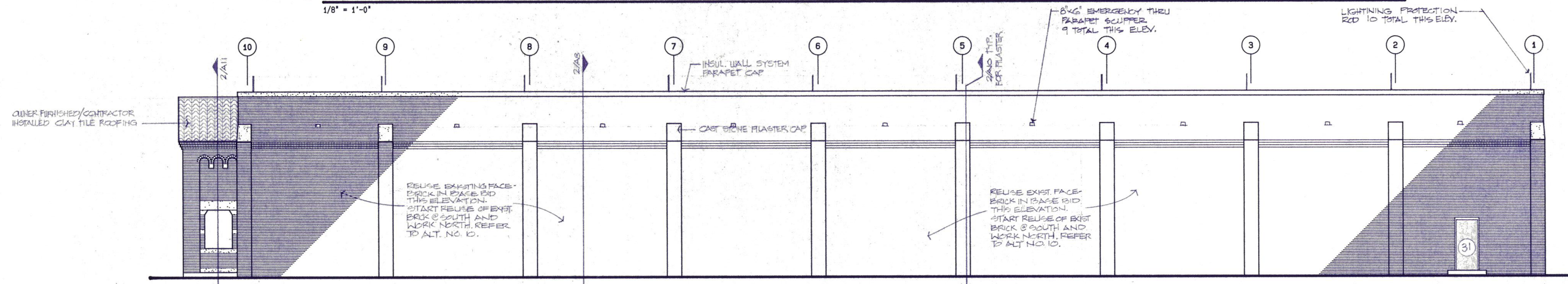
SHEET

All

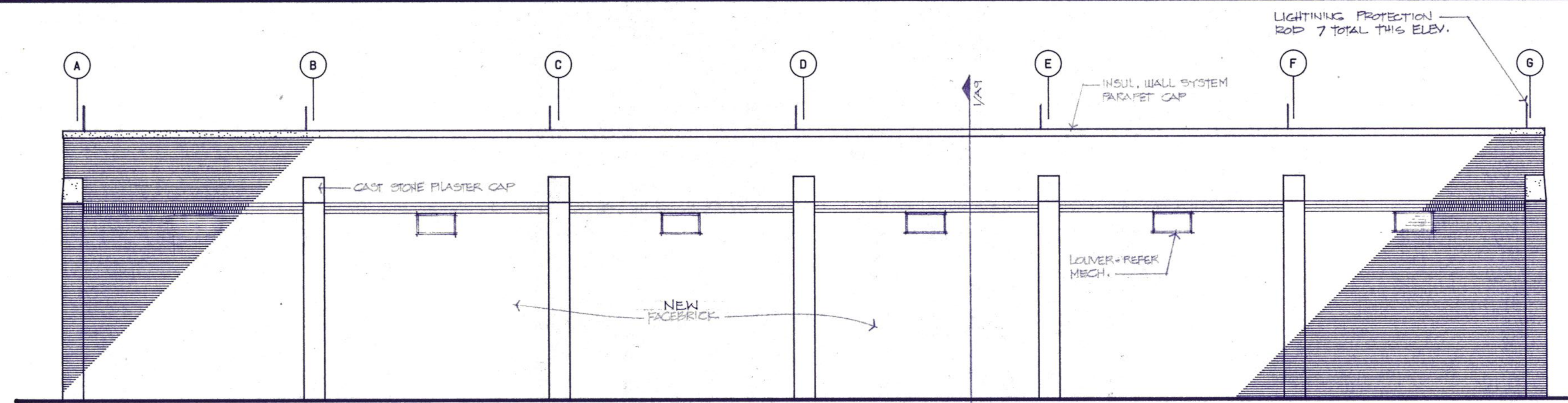




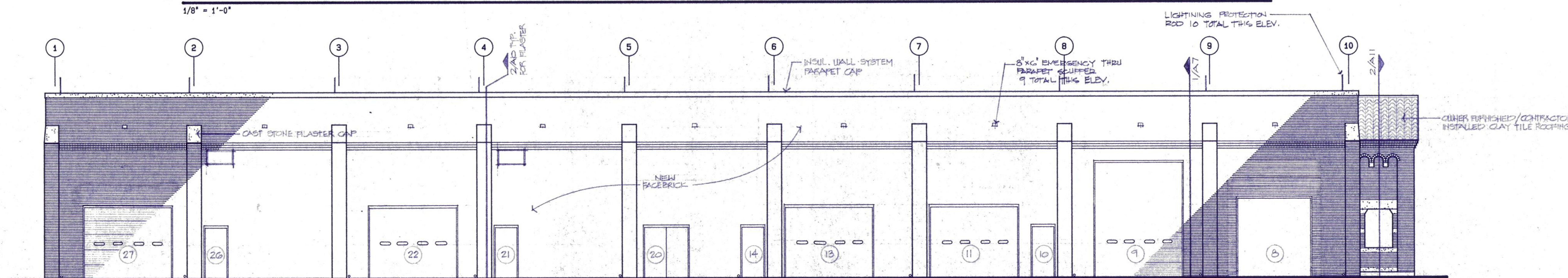
1 SOUTH ELEVATION
1/8" = 1'-0"



2 EAST ELEVATION
1/8" = 1'-0"



3 NORTH ELEVATION
1/8" = 1'-0"



4 WEST ELEVATION
1/8" = 1'-0"

NOTE: THESE ELEVATIONS ARE NOT TO SCALE VERTICALLY. REFER TO WALL SECTIONS FOR HEIGHT DIMENSIONS.



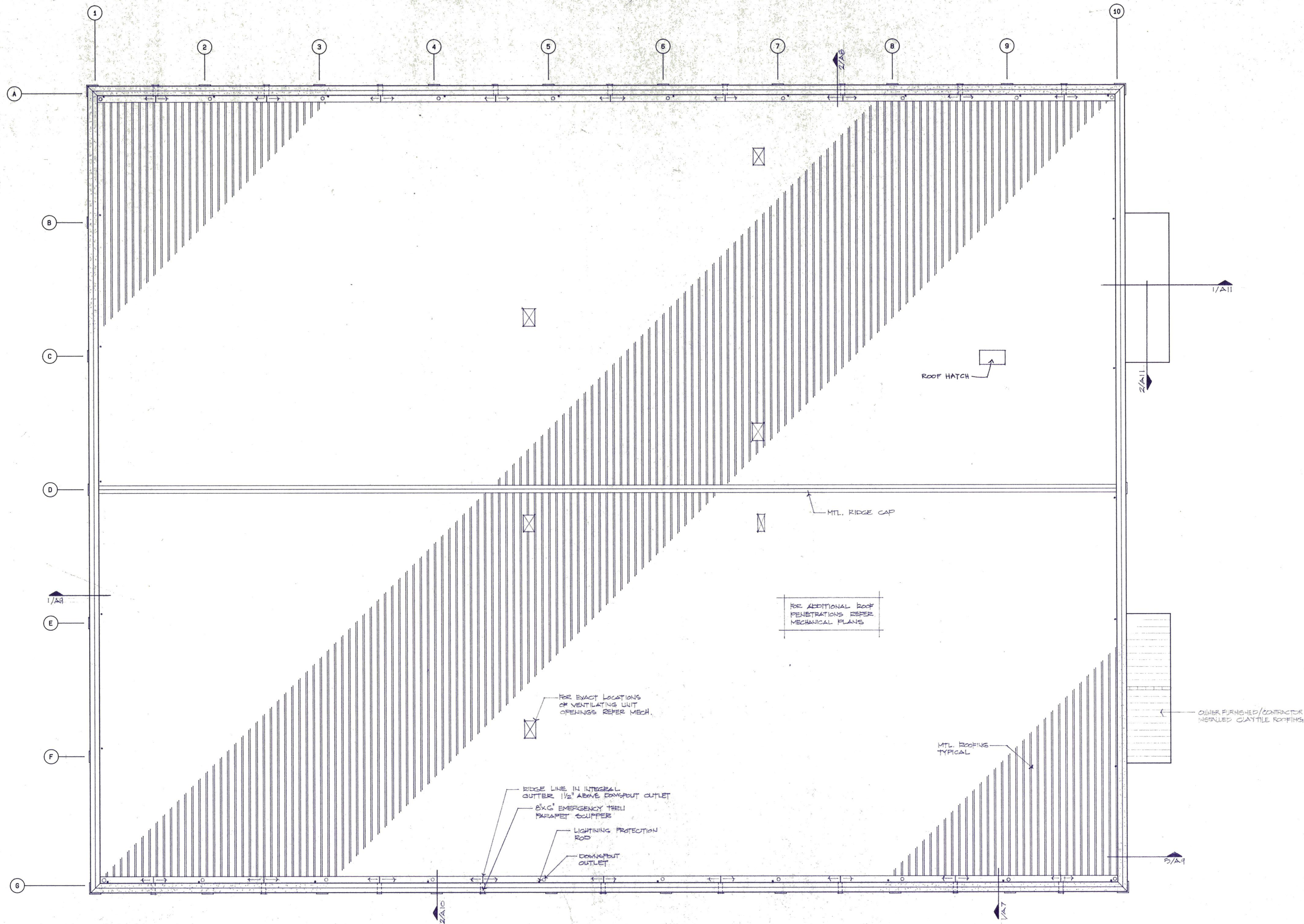
Daugherty & Glover, Inc.
ARCHITECTS & ENGINEERS
WICHITA FALLS, TEXAS 76308
2629 PLAZA PARKWAY, SUITE 44

A New Maintenance Facility
DANIEL BUILDING
Midwestern State University
Wichita Falls, Texas

DDDD
SSSS
MMMM

DRAWN HACKBUSCH, D
CHECKED DAUGHERTY
DATE JULY 11, 1989
JOB NUMBER 8907

SHEET
A13
OF 10 VOLUME 1



1 ROOF PLAN

1/8" = 1'-0"



Daugherty & Glover, Inc.
 ARCHITECTS & ENGINEERS WICHITA FALLS, TEXAS 76308
 2025 PLAZA PARKWAY, SUITE 44 (817) 691-3013

A New Maintenance Facility
DANIEL BUILDING
 Midwestern State University
 Wichita Falls, Texas



DRAWN HACKBUSCH,

CHECKED DAUGHERTY

DATE JULY 11, 1989

JOB NUMBER 8907

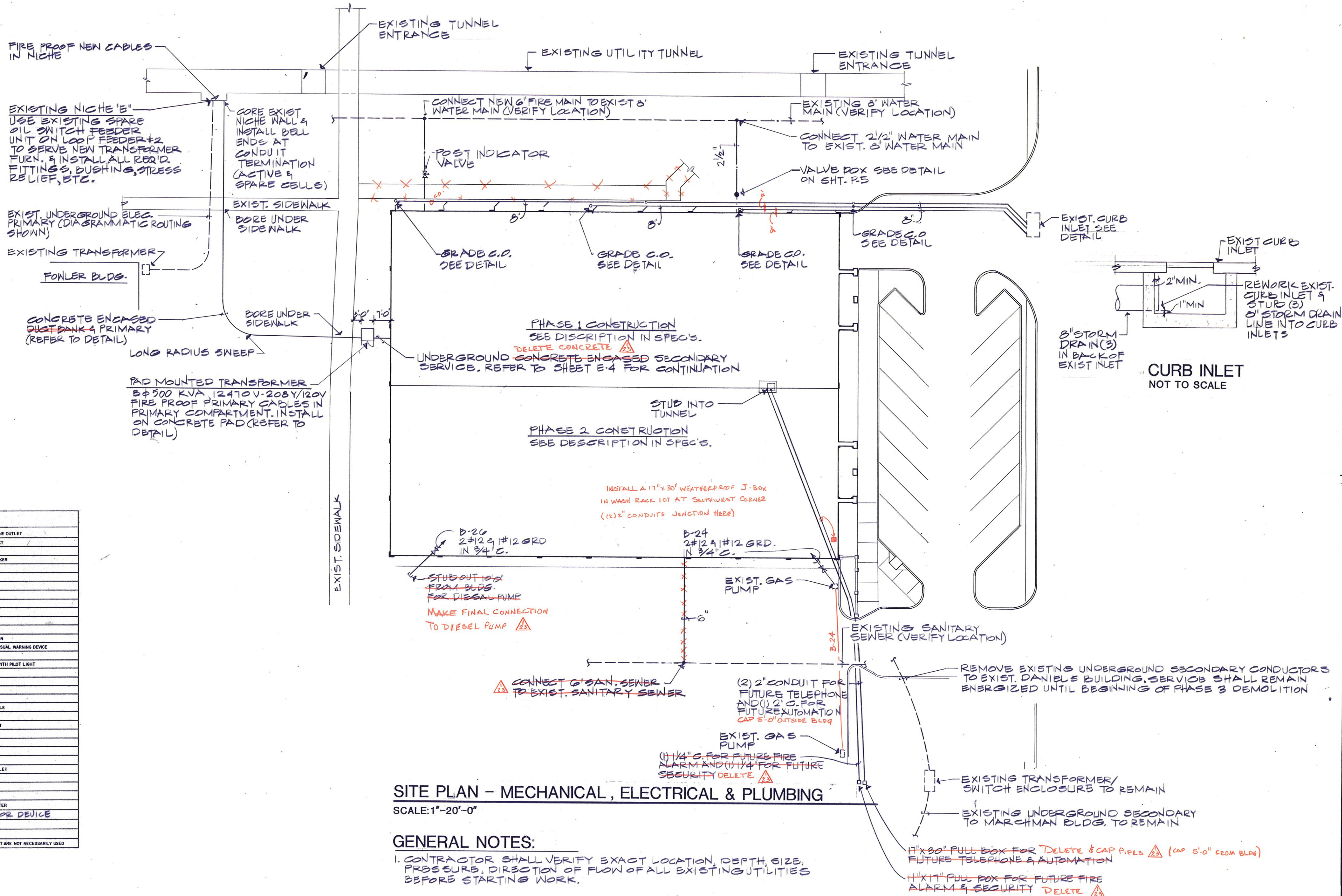
SHEET

A16

OF 16 VOLUME I

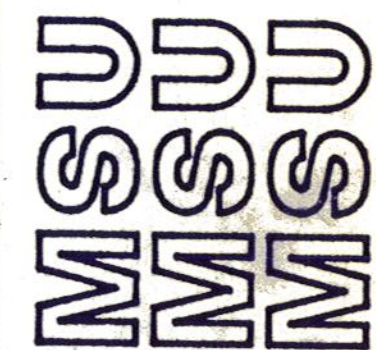
PLUMBING SYMBOLS	
—	COLD WATER (C.W.)
—	HOT WATER SUPPLY (H.W.)
—	HOT WATER RETURN (H.W.R.)
—	GAS LINE
—	SANITARY SEWER
—	SANITARY VENT
—	AREA DRAIN LINE
—	ROOF DRAIN LINE
—	STORM DRAIN LINE
—	SUB-SOIL DRAIN LINE
—	DRAIN LINE
—	CLEANOUT (FLOOR, WALL OR GRADE AS INDICATED)
—	CAP ON END OF PIPE
—	AIR CHAMBER
—	FLEXIBLE CONNECTION (PIPE LINE)
—	CONCENTRIC REDUCER
—	BALL VALVE
—	BALANCE COCK
—	GLOBE VALVE
—	PLUG COCK, GAS STOP, PLUG VALVE
—	CHECK VALVE
—	STRAINER
—	ECCENTRIC REDUCER (ECC. RED.)
—	UNION
—	VALVE IN VERTICAL (TYPE AS NOTED)
—	RISER DOWN (ELBOW)
—	RISER UP (ELBOW)
—	RISE OR DROP
—	DIRECTION OF FLOW
—	DIRECTION OF PITCH DOWN
—	LAWN FAUCET (L.F.)
—	WALL, HYDRANT (W.H.) OR HOSE BIBB (H.B.) AS INDICATED
—	BRANCH CONNECTION OUT OF TOP
—	BRANCH CONNECTION OUT OF BOTTOM
—	BRANCH CONNECTION OUT OF SIDE
—	FLOOR DRAIN (F.D.) OR AREA DRAIN (A.D.) AS INDICATED
—	ROOF DRAIN (R.D.)
—	WASTE
—	VENT
—	V.T.R. VENT THRU ROOF
—	V-REV. VENT REVENT
—	REV. REVENT
—	E.W.C. ELECTRIC WATER COOLER
—	W.C. WATER CLOSET
—	C.O. CLEAN OUT
—	G.C.O. GRADE CLEAN OUT
—	W.C.O. WALL CLEAN OUT
—	F.C.O. FLUSH CLEAN OUT
—	P.C.O. PLUG CLEAN OUT
—	C.I. CAST IRON
—	V.T. VITRIFIED TILE
—	COP. COPPER
—	D.S. DOWNSPOUT
—	G.I. GALVANIZED IRON
—	A.F.F. ABOVE FINISHED FLOOR
—	PLUMBING FIXTURE DESIGNATION
—	FLOOR DRAIN
—	VENT THRU ROOF
—	SINK
—	LAVATORY
—	URINAL
—	E.W.C.
—	WALL MOUNTED W.C.
—	FLOOR MOUNTED W.C.

ELECTRICAL SYMBOLS	
—	FLUORESCENT LIGHT FIXTURE-LETTER DENOTES TYPE
—	RECESSED LIGHT FIXTURE-LETTER DENOTES TYPE
—	SURFACE MOUNTED LIGHT FIXTURE-LETTER DENOTES TYPE
—	WALL MOUNTED LIGHT FIXTURE-LETTER DENOTES TYPE
—	EXIT LIGHT-ARROW AS INDICATED
—	LIGHT FIXTURE EQUIPPED WITH EMERGENCY BALLAST
—	JUNCTION BOX (J-BOX)
—	CONDUIT CONCEALED IN CEILING OR WALL
—	CONDUIT CONCEALED IN OR BELOW FLOOR-SEE SPECS
—	CONDUIT EXPOSED, PARALLEL TO BUILDING LINES
—	CONDUIT HOMERUN
—	CONDUIT STUBBED UP
—	CONDUIT STUBBED DOWN
—	FLEXIBLE CONDUIT, CONDUCTORS & SIZE AS REQUIRED
—	SINGLE POLE SWITCH
—	TWO POLE SWITCH
—	THREE WAY SWITCH
—	FOUR WAY SWITCH
—	KEY SWITCH
—	THREE WAY KEY SWITCH
—	FOUR WAY KEY SWITCH
—	SWITCH WITH PILOT LIGHT
—	DIMMER
—	MULTI-OUTLET ASSEMBLY-SEE SPECS
—	DUPLEX RECEPTACLE
—	SURFACE FLOOR DUPLEX RECEPTACLE
—	FLUSH FLOOR DUPLEX RECEPTACLE
—	SPECIAL PURPOSE ELECTRIC OUTLET
—	WALL TELEPHONE OUTLET
—	SURFACE FLOOR TELEPHONE OUTLET
—	FLUSH FLOOR TELEPHONE OUTLET
—	WALL COMPUTER TERMINAL
—	SURFACE FLOOR COMPUTER TERMINAL
—	FLUSH FLOOR COMPUTER TERMINAL
—	WALL MICROPHONE OUTLET
—	FLUSH FLOOR MICROPHONE OUTLET
—	WALL TELEVISION OUTLET
—	WALL VOLUME CONTROL
—	RECESSED CEILING SPEAKER
—	WALL SPEAKER
—	SINGLE FACE CLOCK
—	DOUBLE FACE CLOCK
—	CLOCK OUTLET ONLY
—	PUSH BUTTON
—	BELL
—	BUZZER
—	HORN
—	FIRE ALARM PULL STATION
—	FIRE ALARM AUDIBLE/VISUAL WARNING DEVICE
—	MOTOR CIRCUIT SWITCH
—	MOTOR CIRCUIT SWITCH WITH PILOT LIGHT
—	DISCONNECT SWITCH
—	CONTROLLER
—	MOTOR
—	THERMOSTAT
—	QUADRAPLEX RECEPTACLE
—	SMOKE DETECTOR
—	SMOKE DETECTOR IN DUCT
—	THERMAL DETECTOR
—	INTERCOM OUTLET
—	AUDIO VISUAL OUTLET
—	AUDIO OUTLET
—	FLUSH FLOOR AUDIO OUTLET
—	EXPLOSION PROOF SEAL
—	WEATHERPROOF
—	ABOVE FINISH FLOOR
—	G.F.I. GROUND FAULT INTERRUPTER
—	SECURITY DOOR DEVICE



Daugherty & Glover, Inc.
ARCHITECTS & ENGINEERS
1607 BROOK WICHITA FALLS, TEXAS 76781
(817) 322-3013

A New Maintenance Facility
DANIEL BUILDING
Midwestern State University
Wichita Falls, Texas



DRAWN W.D.M.JR
CHECKED D.W.G.
DATE JULY 11, 1989
JOB NUMBER 8907

SHEET
MEP-1
OF 6M, 95 95P
OF 1M5P VOLUME II

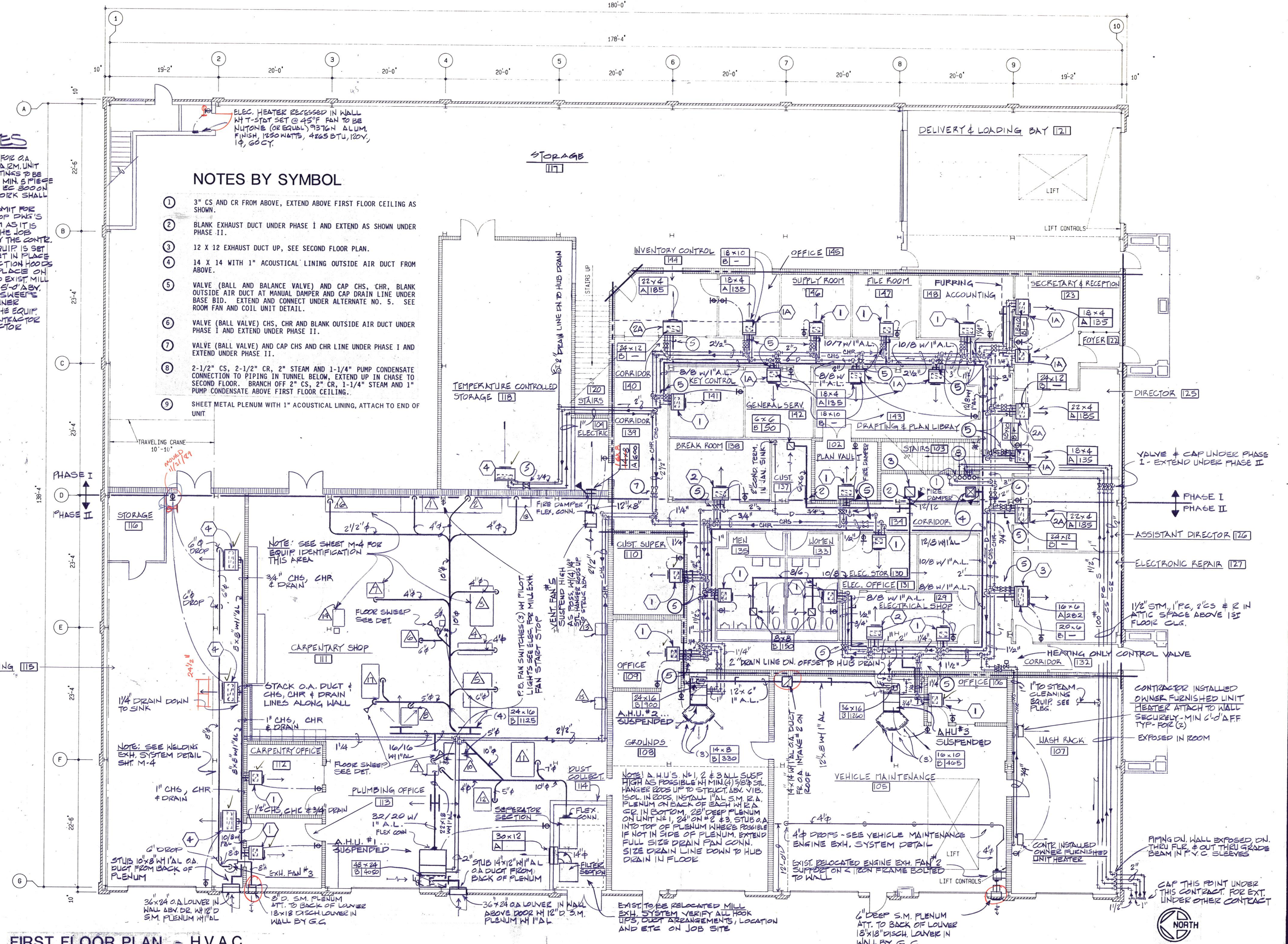
FRIBERG ASSOCIATES INC.
CONSULTING ENGINEERS
P.O. BOX 2080 • FORT WORTH, TEXAS 76113-2080
FAI PROJECT NO. 89044-00

GENERAL NOTES

- SEE ROOM F&E UNIT SCHEDULE FOR O.A. RUN OUT DUCT & V.D. SIZE TO E.A.R.M. UNIT ALL MILL EXH. DUCTWORK & FITTINGS TO BE SPIRAL ROUND PIPE W/ WELDED MIN. 5 PIECE ALL ALL SEALED AIR TIGHT W/ EC 800 ON OUTSIDE ALL EXPOSED DUCTWORK SHALL BE PAINT GRIP METAL.
- CONTR. SHALL PREPARE & SUBMIT FOR REVIEW MIN. 1/4" SCALE S.M. SHOP DWS'S ON THE ENTIRE MILL EXH. SYSTEM AS IT IS TO BE INSTALLED FROM ON THE JOB. FIELD MEASUREMENTS TAKEN BY THE CONTR. ON THE JOBSITE AFTER THE EQUIP. IS SET IN PLACE. EQUIP. WILL BE SET IN PLACE W/ THE EXIST. MILL EXH. COLLECTION HOODS & DUCT ALONG W/ GATES IN PLACE ON EQUIP. CONTR. WILL CONN. TO EXIST. MILL EXH. DUCTWORK @ APPROX. 5' DIA. V.D. FIN. FLR. EXCEPT @ FLOOR SWEEPERS WHEN REFERENCE IS MADE TO OWNER FURNISHED EQUIPMENT, THEN THE EQUIP. IS TO BE FURNISHED TO THE CONTRACTOR FOR INSTALLATION BY CONTRACTOR.

NOTES BY SYMBOL

- 3" CS AND CR FROM ABOVE, EXTEND ABOVE FIRST FLOOR CEILING AS SHOWN.
- BLANK EXHAUST DUCT UNDER PHASE I AND EXTEND AS SHOWN UNDER PHASE II.
- 12 X 12 EXHAUST DUCT UP, SEE SECOND FLOOR PLAN.
- 14 X 14 WITH 1" ACOUSTICAL LINING OUTSIDE AIR DUCT FROM ABOVE.
- VALVE (BALL AND BALANCE VALVE) AND CAP CHS, CHR, BLANK OUTSIDE AIR DUCT AT MANUAL DAMPER AND CAP DRAIN LINE UNDER BASE BID. EXTEND AND CONNECT UNDER ALTERNATE NO. 5. SEE ROOM FAN AND COIL UNIT DETAIL.
- VALVE (BALL VALVE) CHS, CHR AND BLANK OUTSIDE AIR DUCT UNDER PHASE I AND EXTEND UNDER PHASE II.
- VALVE (BALL VALVE) AND CAP CHS AND CHR LINE UNDER PHASE I AND EXTEND UNDER PHASE II.
- 2-1/2" CS, 2-1/2" CR, 2" STEAM AND 1-1/4" PUMP CONDENSATE CONNECTION TO PIPING IN TUNNEL BELOW, EXTEND UP IN CHASE TO SECOND FLOOR. BRANCH OFF 2" CS, 2" CR, 1-1/4" STEAM AND 1" PUMP CONDENSATE ABOVE FIRST FLOOR CEILING.
- SHEET METAL PLENUM WITH 1" ACOUSTICAL LINING, ATTACH TO END OF UNIT.



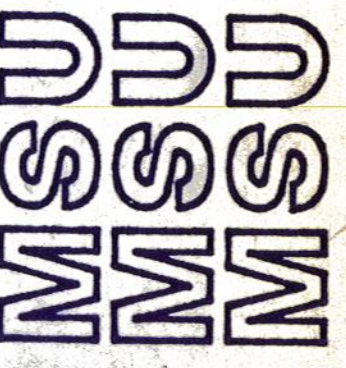
FIRST FLOOR PLAN - H.V.A.C.

1/8" = 1'-0"



Daugherty & Glover, Inc.
ARCHITECTS & ENGINEERS
1807 BROOK WICHITA, KANSAS 67201
(913) 323-3013

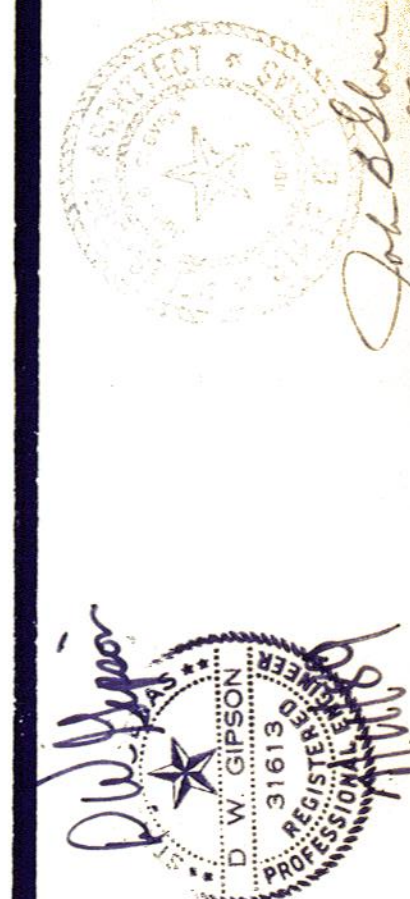
A New Maintenance Facility
DANIEL BUILDING
Midwestern State University
Wichita Falls, Texas



DRAWN JCC
CHECKED DWG
DATE JULY 11, 1989
JOB NUMBER 8907
SHEET
M-2
OF 6M VOLUME II

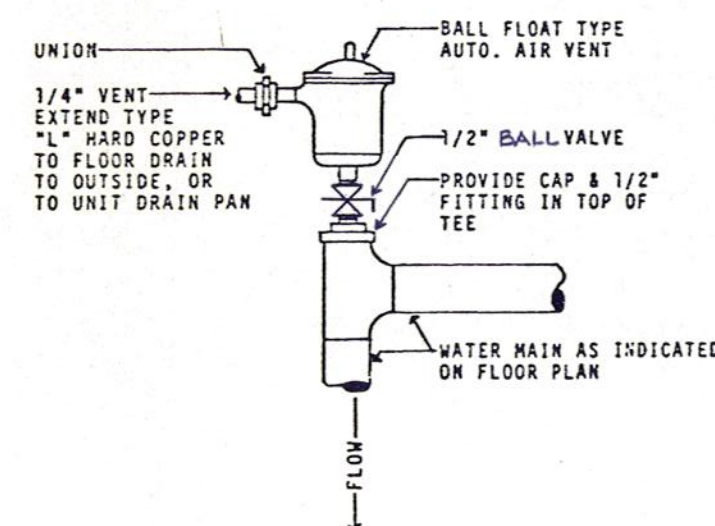
FRIBERG ASSOCIATES INC.
CONSULTING ENGINEERS
P.O. BOX 2080 • FORT WORTH, TEXAS 76113-2080
FAI PROJECT NO. 89044.00

PLOTTED: MAY 3, 1989

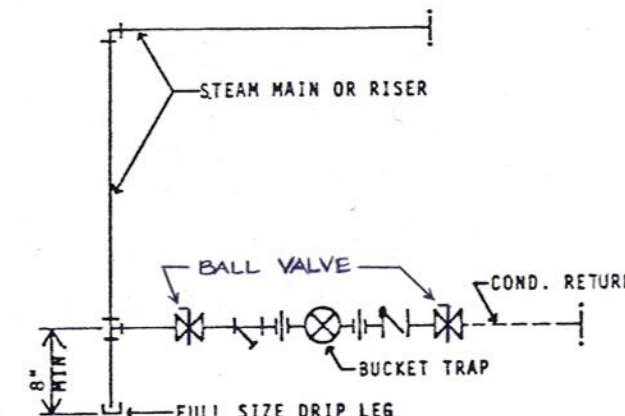


OF 6M VOLUME II

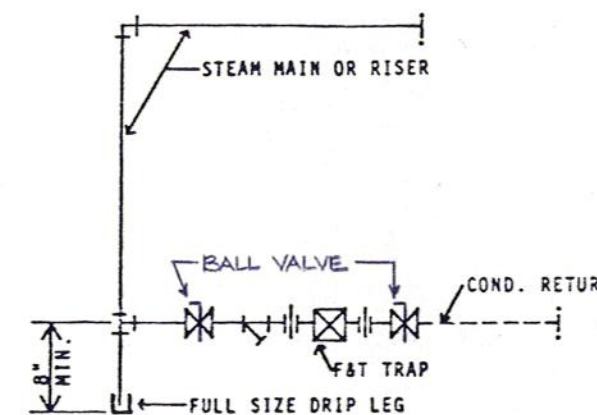
ROOM F & C UNIT DETAIL
NOT TO SCALE



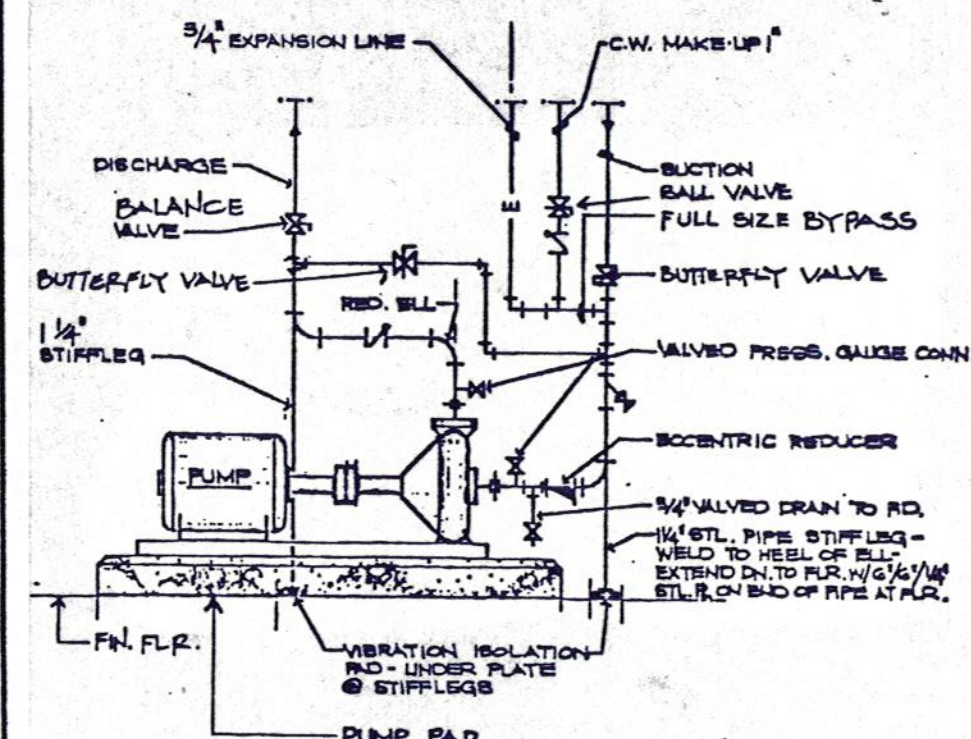
1 AUTOMATIC AIR VENT



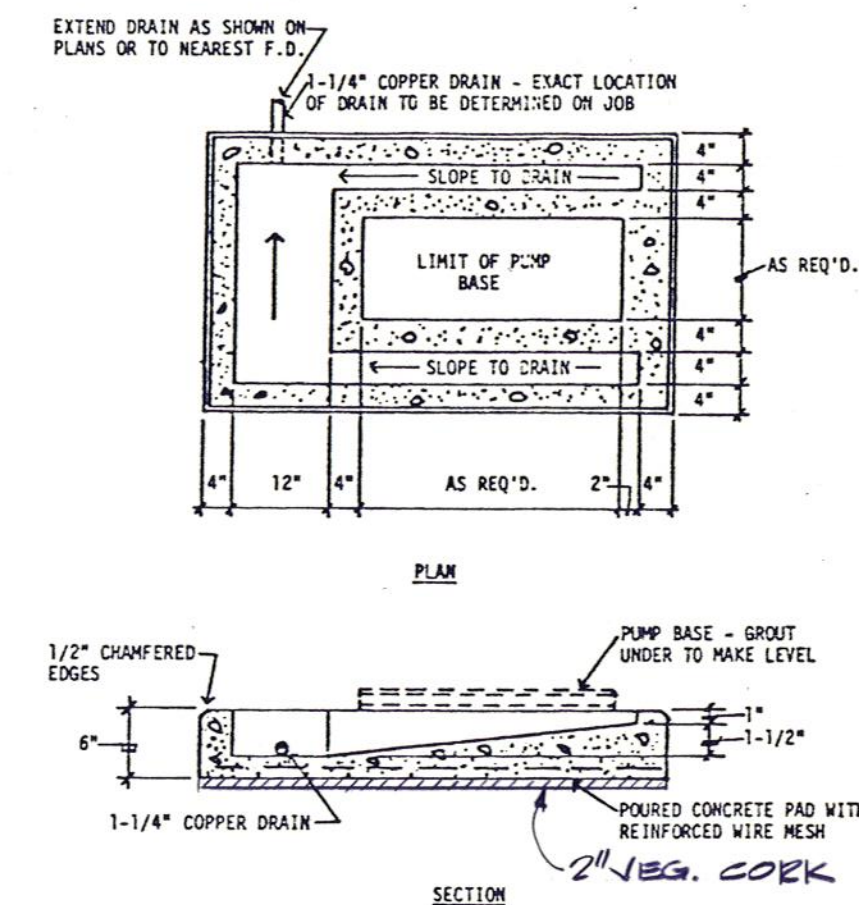
2 HIGH PRESSURE END OF MAIN DRIP



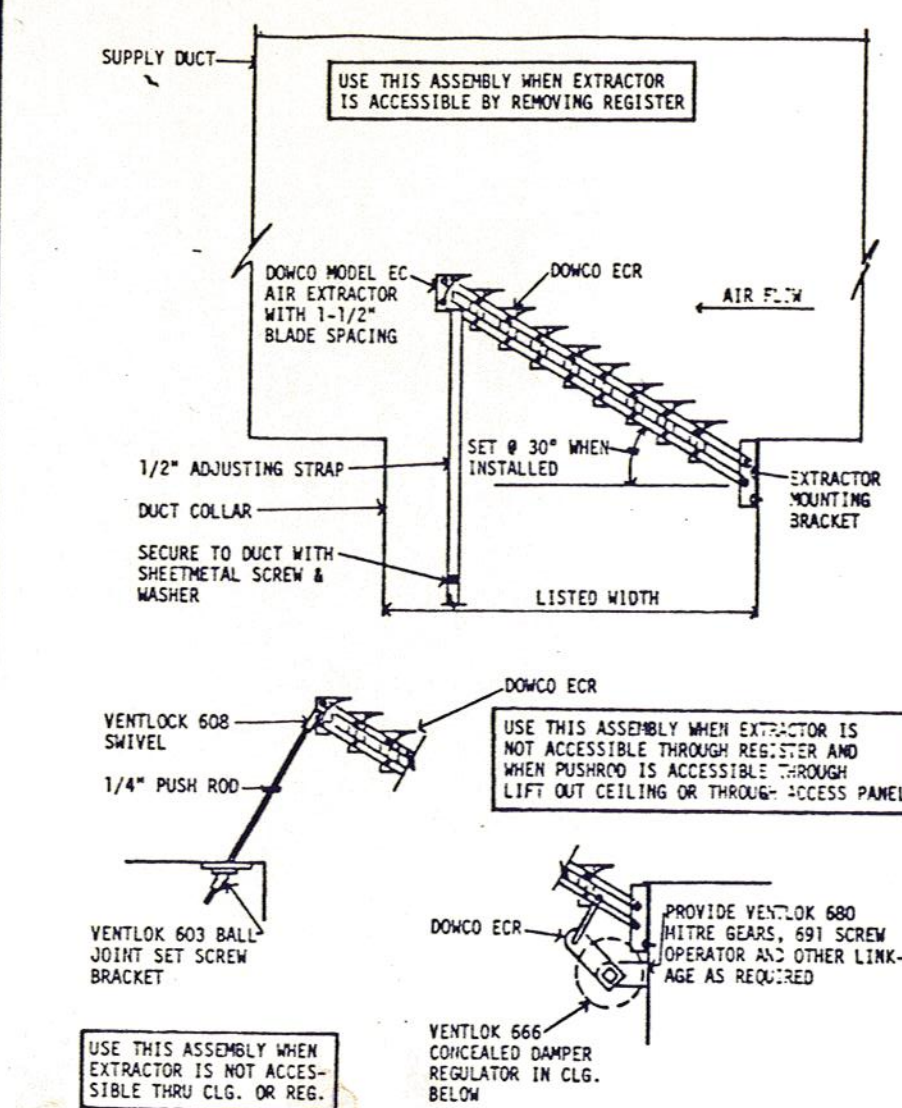
3 LOW PRESSURE END OF MAIN DRIP



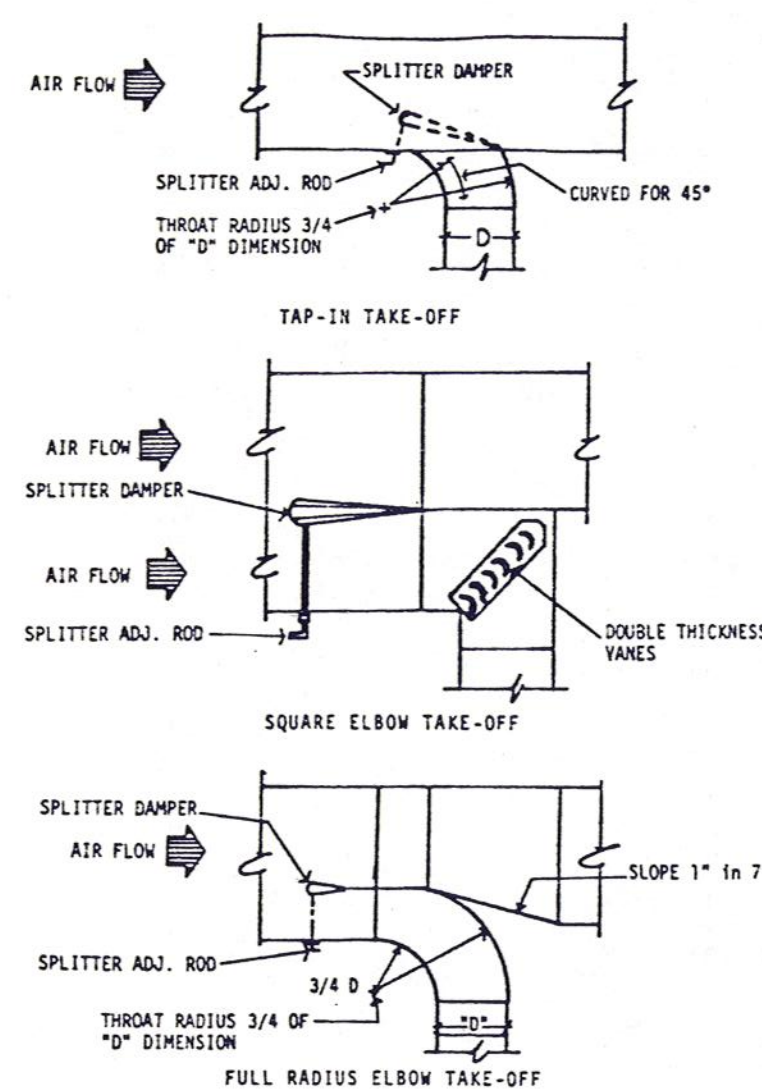
4 PUMP PIPING



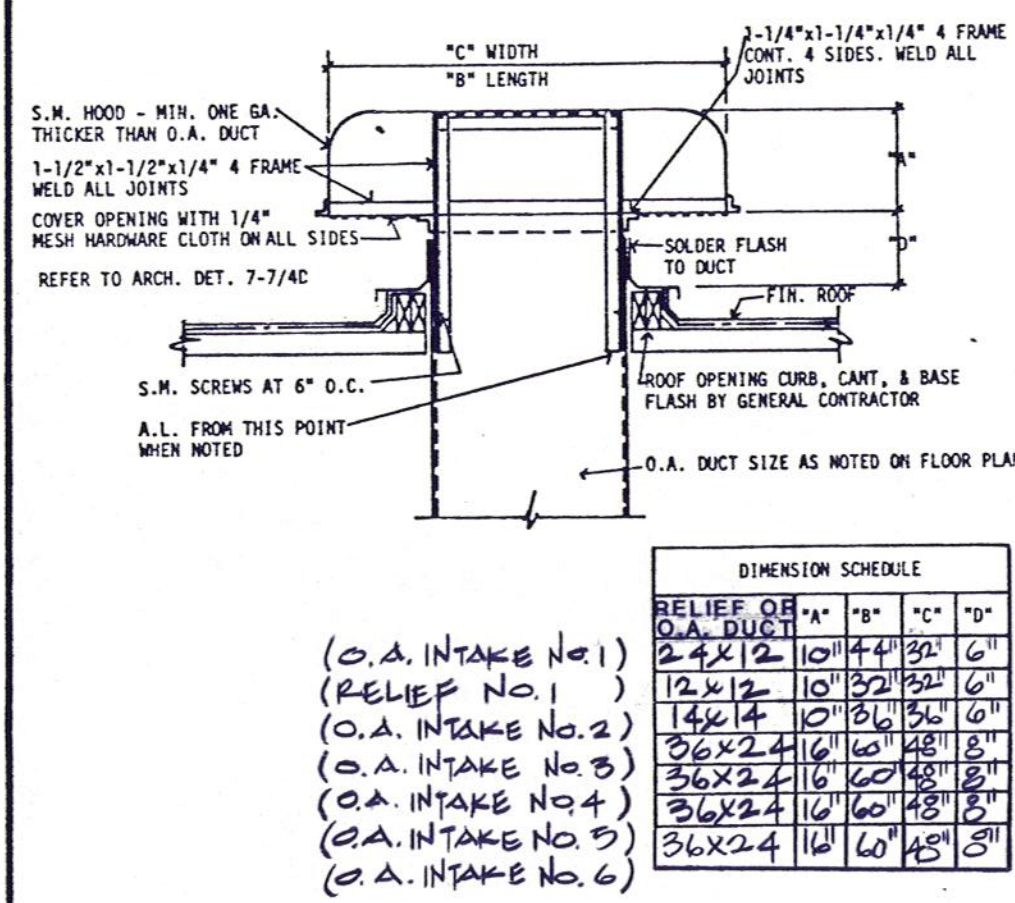
5 PUMP PAD



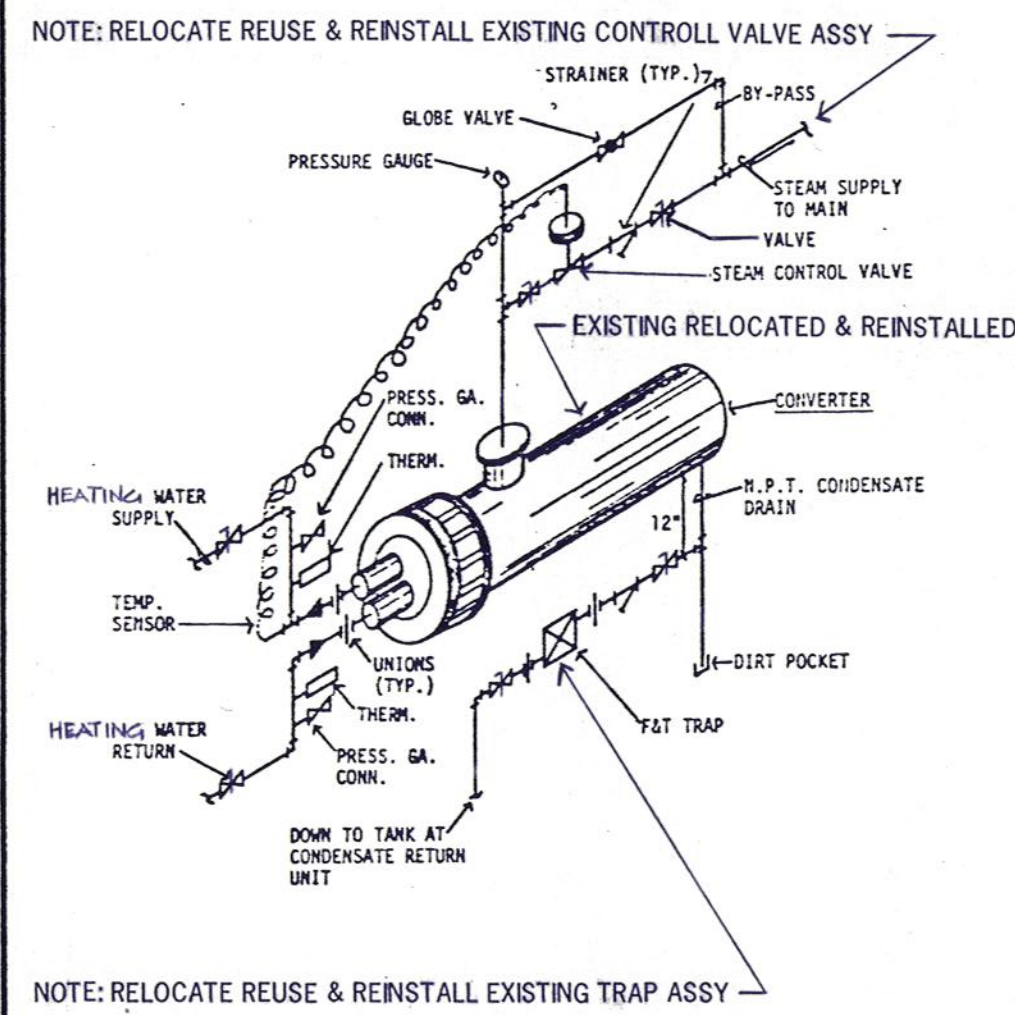
6 AIR EXTRACTOR DETAIL



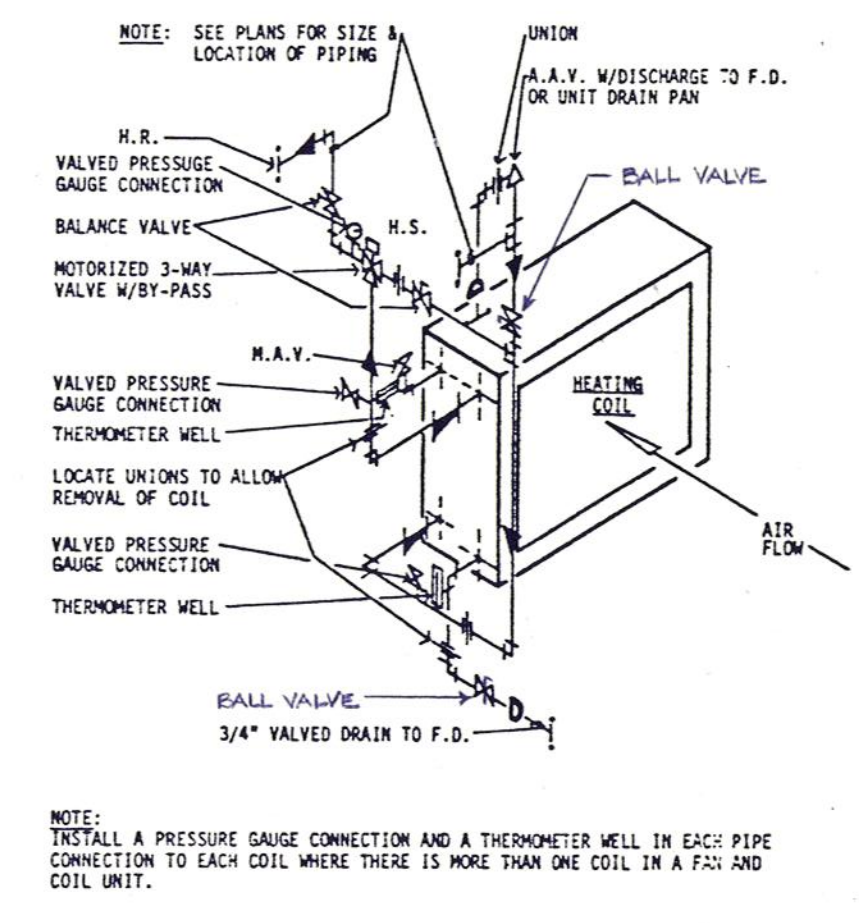
7 DUCT CONSTRUCTION DETAIL



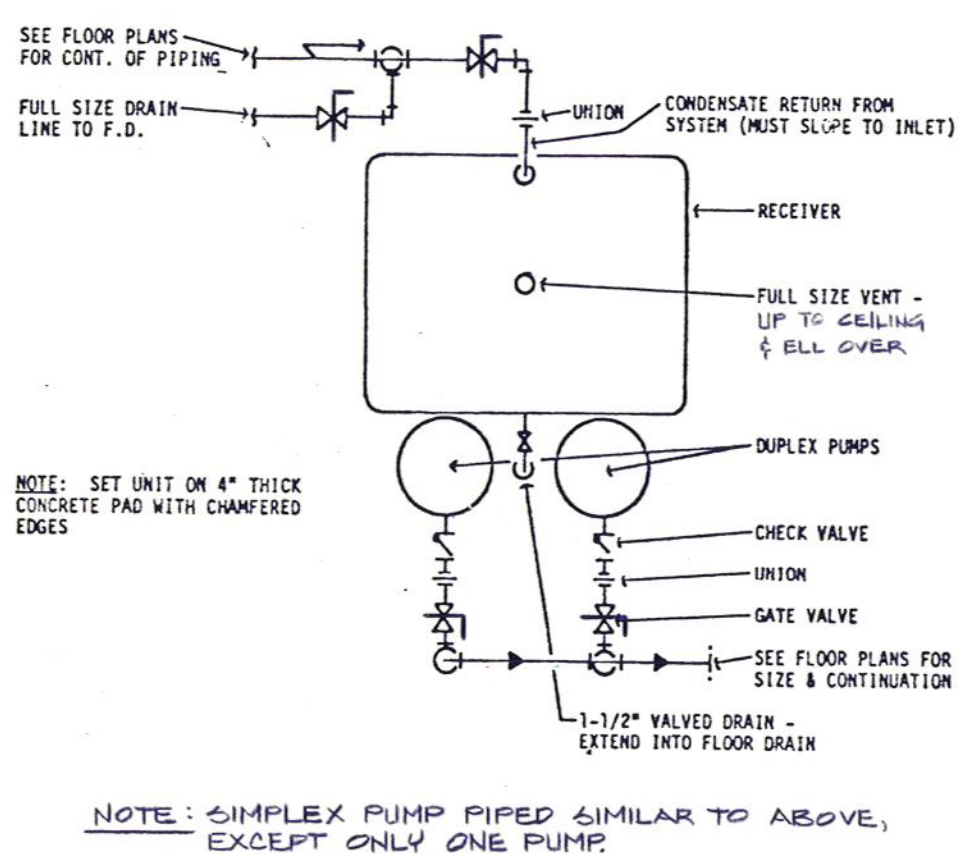
8 RELIEF OR ROOF O.A. INTAKE



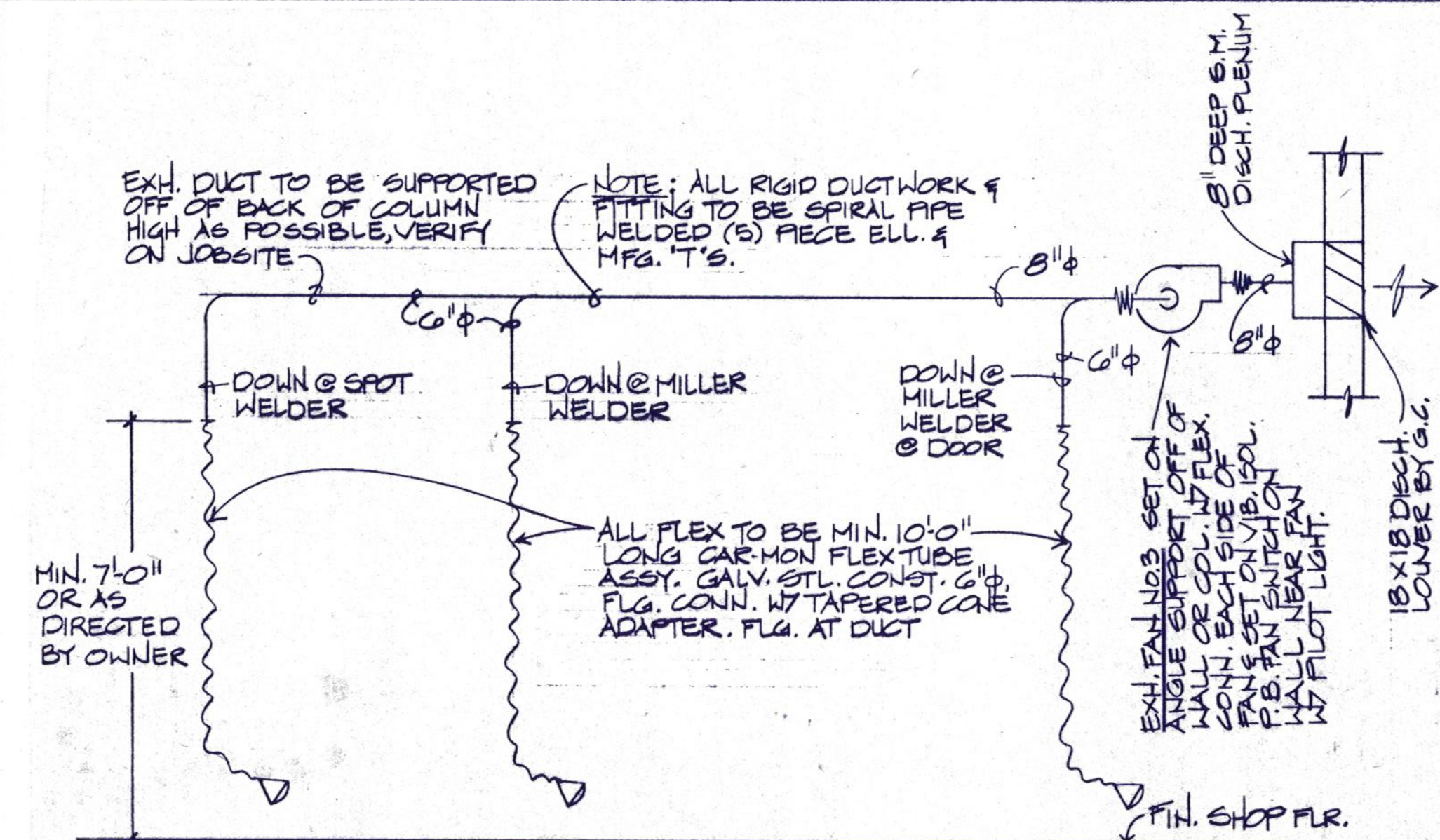
9 CONVERTER PIPING DIAGRAM



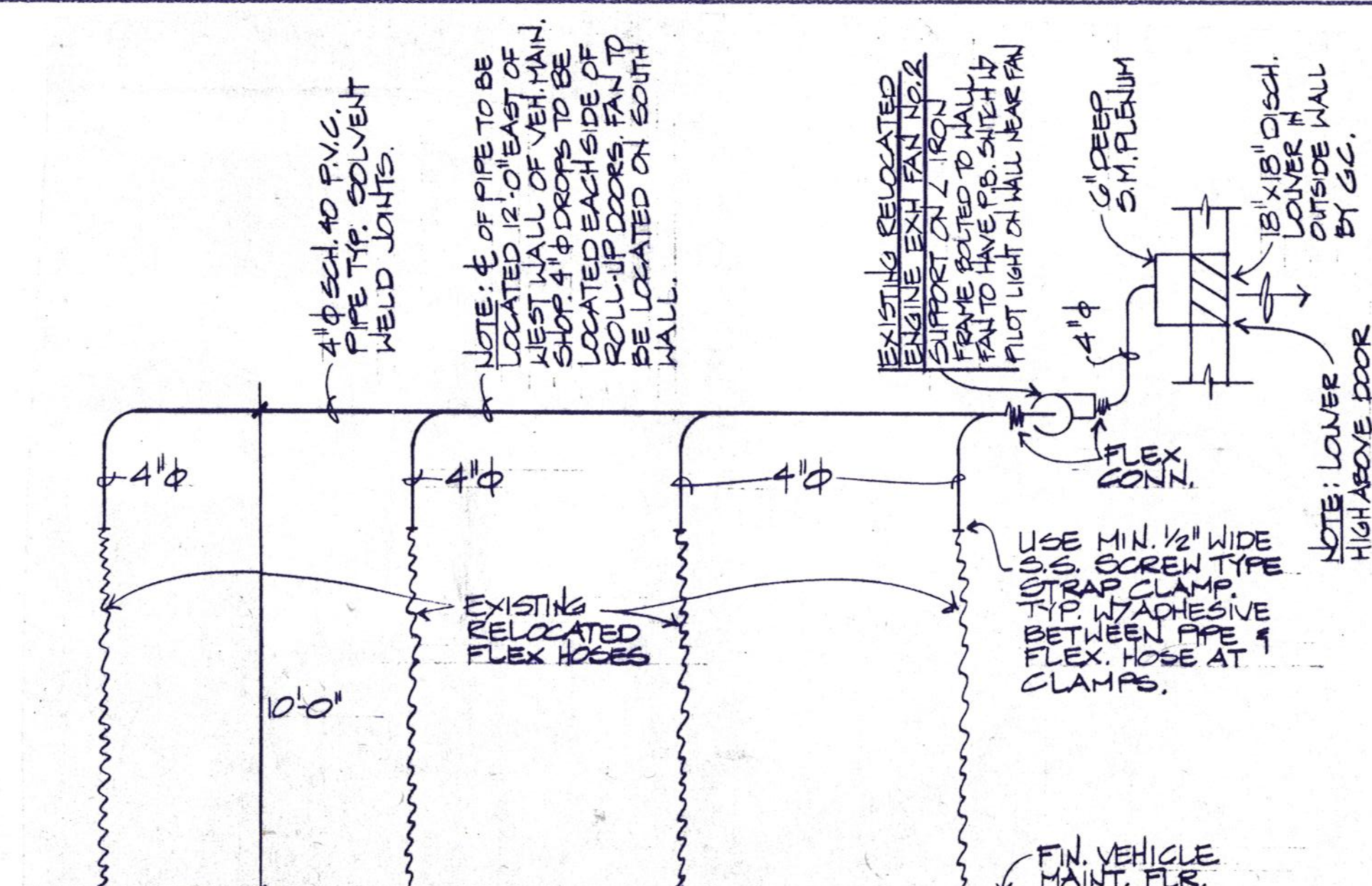
11 WATER COIL PIPING (3-WAY CONTROL)



12 CONDENSATE PUMP UNIT PIPING DIAGRAM



WELDING SHOP WELDING EXHAUST SYSTEM DETAIL
NOT TO SCALE



VEHICLE MAINTENANCE ENGINE EXH. SYSTEM DETAIL
NOT TO SCALE

