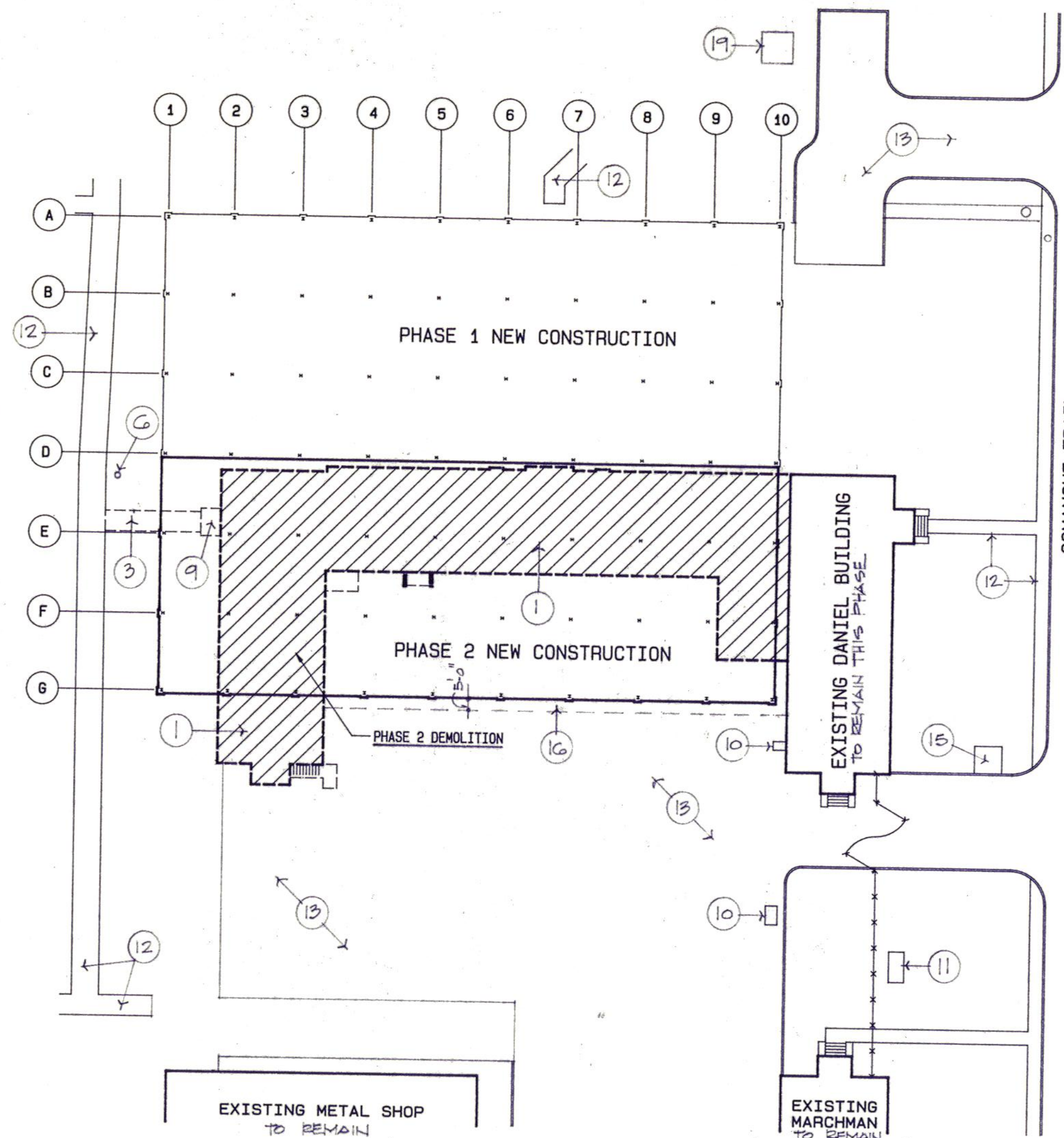


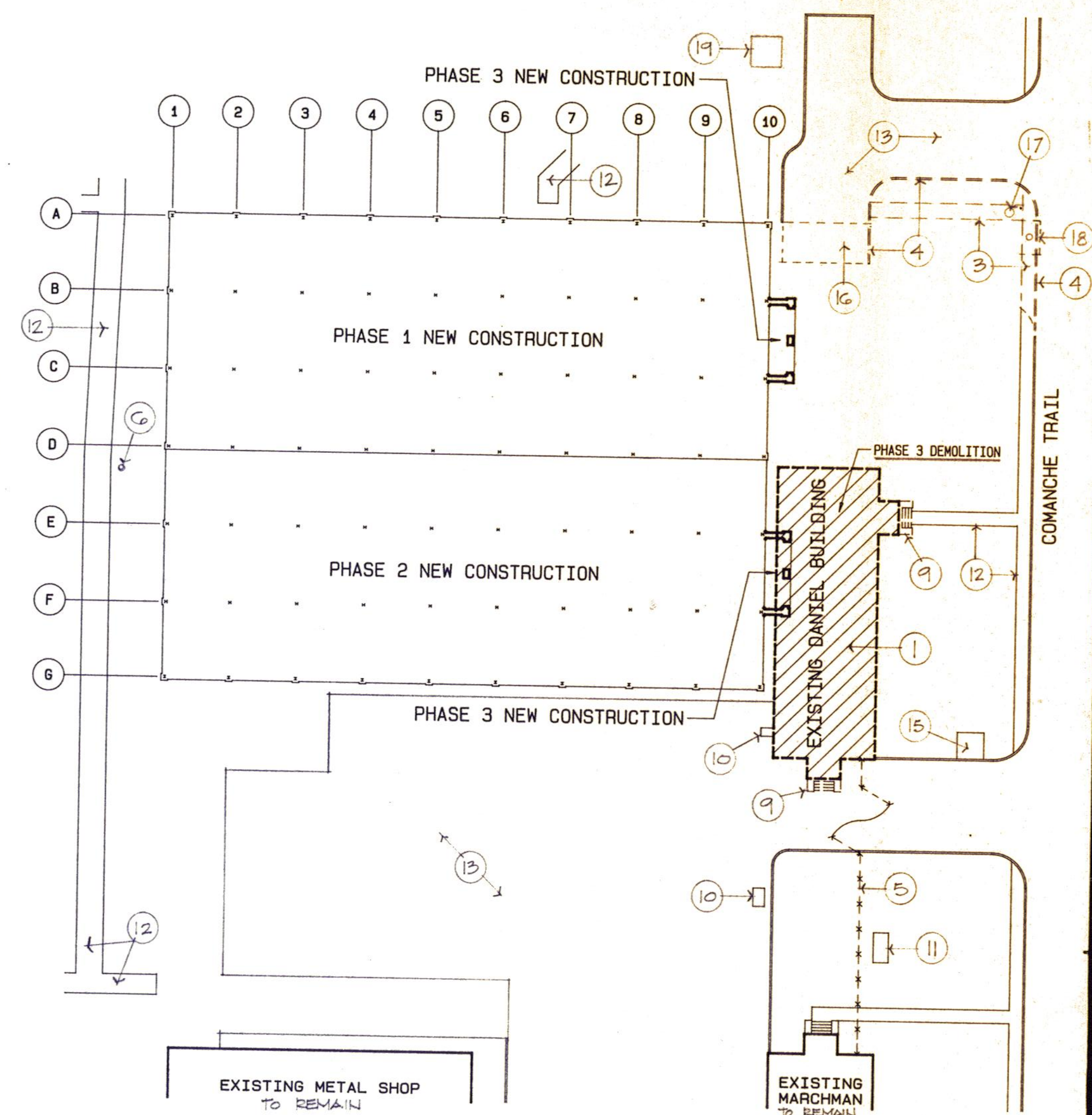
1 SITE PLAN - PHASE ONE

1" = 30'-0"



2 SITE PLAN - PHASE TWO

1" = 30'-0"



3 SITE PLAN - PHASE THREE

1" = 30'-0"



DEMOLITION KEYNOTES (COORDINATE THESE NOTES WITH VARIOUS PHASED DEMOLITION AND NEW CONSTRUCTION)

1. FOR ADDITIONAL BUILDING DEMOLITION REFER SHEET D1.
2. EXISTING CONC. CURB AND GUTTER & CONC. RAMP TO BE REMOVED COMPLETE. PROVIDE ACCESSIBILITY TO NEW DOOR #38 (REFER A2) BEFORE PHASE 2 DEMO.
3. REMOVE EXISTING CONC. SIDEWALK COMPLETE.
4. REMOVE EXISTING CONC. CURB & GUTTER COMPLETE.
5. REMOVE EXISTING CHAIN LINK FENCE AND POSTS AND RELOCATE. REFER SP2.
6. EXISTING TREE TO REMAIN.
7. REMOVE EXISTING CONC. TUNNEL ACCESS AS REQUIRED FOR NEW CONSTRUCTION. REFER SS.
8. EXISTING FACE BECK TO BE REMOVED DURING PHASE 1 DEMOLITION. REFER GENERAL NOTE #3 ON SHEET D1 FOR ADDITIONAL INFORMATION.
9. REMOVE EXISTING CONC. PORCH COMPLETE.
10. EXISTING GASOLINE PUMP TO REMAIN INTACT.
11. EXISTING ELECTRICAL TRANSFORMER TO REMAIN.
12. EXISTING CONC. SIDEWALK TO REMAIN INTACT AVOID DAMAGE.
13. EXISTING ASPHALT PARKING TO REMAIN UNLESS OTHERWISE NOTED.
14. 4'-0" WIDE PORTION OF EXISTING CONC. SIDEWALK TO REMAIN.
15. EXISTING DUMPSTER AND CONC. PAD TO REMAIN.
16. REMOVE PORTION OF EXISTING PAVING AS REQUIRED FOR NEW CONSTRUCTION.
17. EXISTING TELEPHONE MANHOLE TO BE REMOVED AS REQUIRED, TO BE LOWERED TO NEW DRIVE ELEVATION. REFER SHT. SP2.
18. EXISTING STORM SEWER CURB INLET, LID AND MANHOLE TO BE REMOVED AS REQUIRED. REFER SP2.
19. EXISTING TUNNEL ACCESS TO REMAIN AND BE PROTECTED. DO NOT STORE ANY MATERIALS WITHIN 3'-0" OF STRUCTURE.

GENERAL NOTES

1. FOR ADDITIONAL BUILDING DEMOLITION INFORMATION REFER SHEET D1.
2. THE GENERAL CONTRACTOR SHALL COORDINATE WITH THE SUB CONTRACTORS DEMOLITION REQUIRED FOR ALL DISCIPLINES UNDER THIS CONTRACT.
3. PROVIDE ADEQUATE SHORING OF ALL LOAD BEARING AREAS AS REQUIRED BETWEEN DEMOLITION PHASES.
4. COORDINATE ALL DEMOLITION WITH NEW CONSTRUCTION DRAWINGS.
5. CONTRACTOR SHALL MAKE HIMSELF FAMILIAR WITH EXISTING SITE CONDITIONS.
6. IF SITE ALTERNATES ARE ACCEPTED, NOT ALL DEMOLITION INDICATED THIS SHEET MAY APPLY AND ADDITIONAL SITE DEMOLITION IS REQUIRED AS NOTED ON SHT. SP3.



Daugherty & Glover, Inc.
ARCHITECTS & ENGINEERS
2829 PLAZA PARKWAY, SUITE 44
WICHITA FALLS, TEXAS 76801
(817) 693-3815

A New Maintenance Facility
DANIEL BUILDING
Midwestern State University
Wichita Falls, Texas

DDG
ENG
INC

DRAWN HACKBUECH, B.

CHECKED DAUGHERTY

DATE JULY 11, 1999

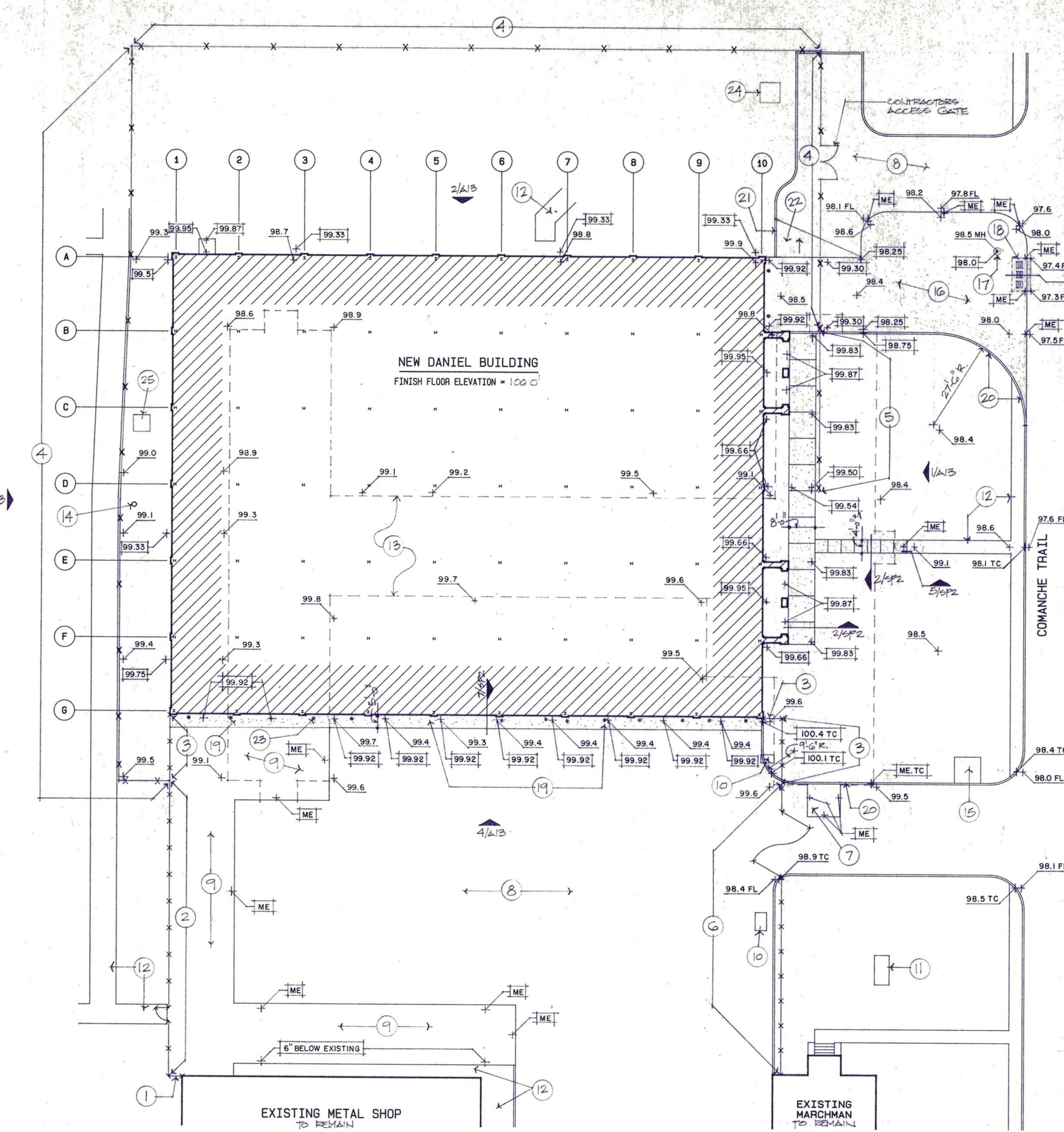
JOB NUMBER 8907

SHEET

SPI

OF 3 VOLUME I

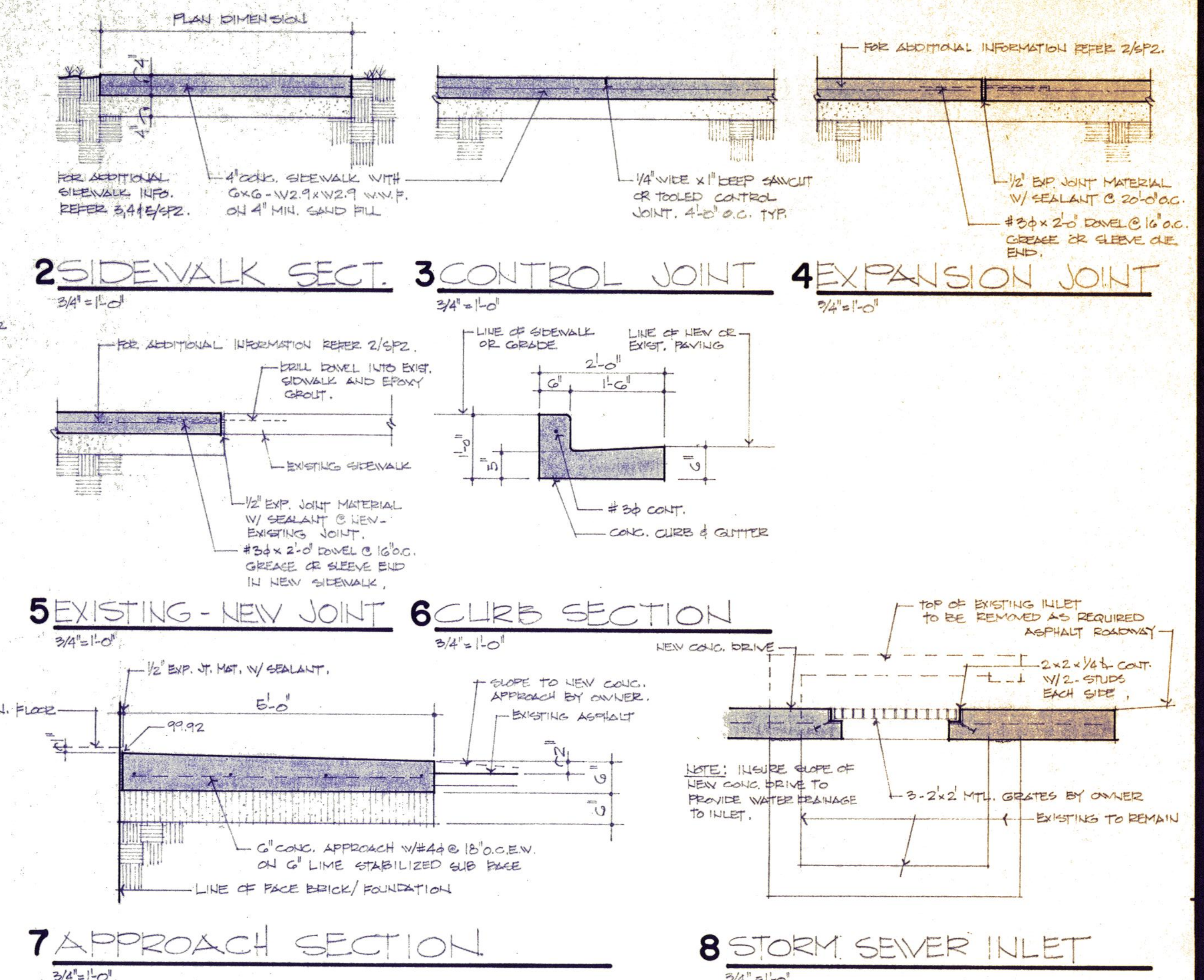
DAUGHERTY & GLOVER, INC. COPYRIGHT 1999



1 SITE PLAN - BASE BID
1" = 20'-0"

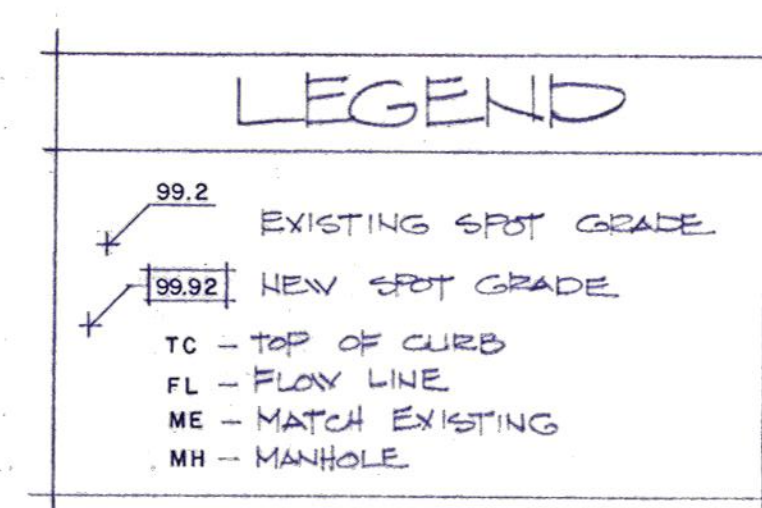
KEYNOTES (THIS SHEET ONLY)

- 1 PROVIDE AND INSTALL NEW FENCE TO MATCH EXISTING FENCE. PHASE 1 NEW CONSTRUCTION.
- 2 EXISTING FENCE REMOVED AND RELOCATED. PHASE 1 NEW CONSTRUCTION. COORDINATE WITH 1/SP1 DEMOLITION. REFER ALTERNATE SITE PLAN SP3 FOR ADDITIONAL INFORMATION.
- 3 NEW FENCE TO MATCH EXISTING FENCE. PHASE 3 NEW CONSTRUCTION. REFER ALT. SITE PLAN SP3 FOR ADDITIONAL INFORMATION.
- 4 CONSTRUCTION FENCE. PHASE 1 DEMOLITION.
- 5 CONSTRUCTION FENCE. PHASE 2 NEW CONSTRUCTION.
- 6 EXISTING FENCE REMOVED AND RELOCATED. PHASE 3 NEW CONSTRUCTION. COORDINATE WITH 1/SP1 DEMOLITION. REFER ALTERNATE SITE PLAN SP3 FOR ADDITIONAL INFORMATION.
- 7 6" CONC. BASE W/ 2" ASPHALT TOPPING.
- 8 EXISTING ASPHALT PARKING LOT TO REMAIN UNLESS OTHERWISE NOTED.
- 9 6" CRUSHED STONE FILL.
- 10 EXISTING GASOLINE PUMP TO REMAIN INTACT.
- 11 EXISTING ELECTRICAL TRANSFORMER TO REMAIN.
- 12 EXISTING CONC. SIDEWALK TO REMAIN INTACT AVOID DAMAGE.
- 13 LINE OF EXISTING BUILDING DEMOLISHED IN PHASES REFER SP1.
- 14 EXISTING TREE TO REMAIN.
- 15 EXISTING PUMPSTER AND CONC. PAD TO REMAIN.

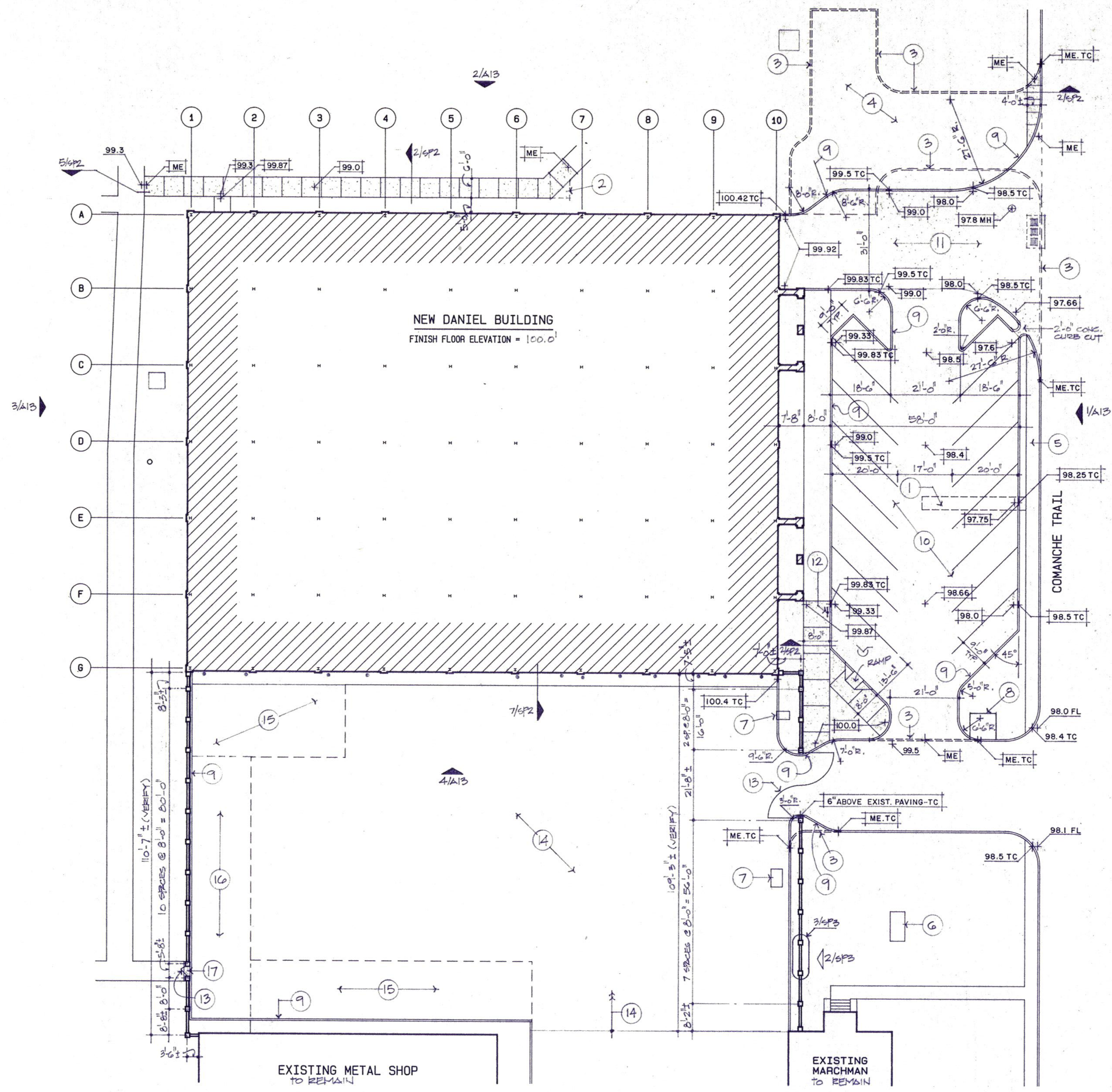


GENERAL NOTES

1. IF ALTERNATE FOR BRICK FENCING IS ACCEPTED (REFER SP3), THEN EXISTING CHAINLINK FENCING MAY BE USED IN CONSTRUCTION FENCE(S).
2. ALL CONSTRUCTION FENCING IS TO BE REMOVED AFTER PHASE 2 NEW CONSTRUCTION.
3. COORDINATE THIS SITE PLAN 1/SP2 WITH SHEET SP1 FOR ADDITIONAL NOTATION OF ITEMS.
4. COORDINATE THIS SITE PLAN WITH SHEET SP3 SITE PLAN - ALTERNATES.



- 16 6" CONC. DRIVE W/ #4 @ 18" O.C. EV. ON 4" MIN SAND FILL.
- 17 EXISTING TELEPHONE MANHOLE TO BE REMOVED AS REQUIRED, TO BE LOWERED TO NEW DRIVE ELEVATION.
- 18 NEW INLET TO EXISTING STORM SEWER REFER 8/SP2
- 19 6" CONC. APPROACH W/ #4 @ 18" O.C. EV. ON 6" LIME STABILIZED SUB BASE.
- 20 NEW CONC. CURB & GUTTER. REFER 6/SP2.
- 21 NEW CONC. CURB TO MATCH SLOPE OF ADJACENT ASPHALT TOPPING.
- 22 NEW ASPHALT TOPPING TO SLOPE TO NEW CONC. DRIVE.
- 23 6" PIPE BOLLARD (CONC. FILLED) 2'-0" ABOVE GRADE, 4'-0" BELOW GRADE. IN 2'-0" DIA. CONC. FILLED HOLE, 1'-0" @ OF BOLLARD TO FACE OF BRICK AND 6" BACK FROM EACH JAMB OF DOORS; 8/9, 11, 13, 22, 27 AND 30. REFER SHEET A2 FOR DOOR LOCATIONS.
- 24 EXISTING TUNNEL ACCESS TO REMAIN AND BE PROTECTED DO NOT STORE ANY MATERIALS WITHIN 2'-0" OF STRUCTURE.
- 25 NEW TRANSFORMER FOR EXACT LOCATION REFER ME-1.

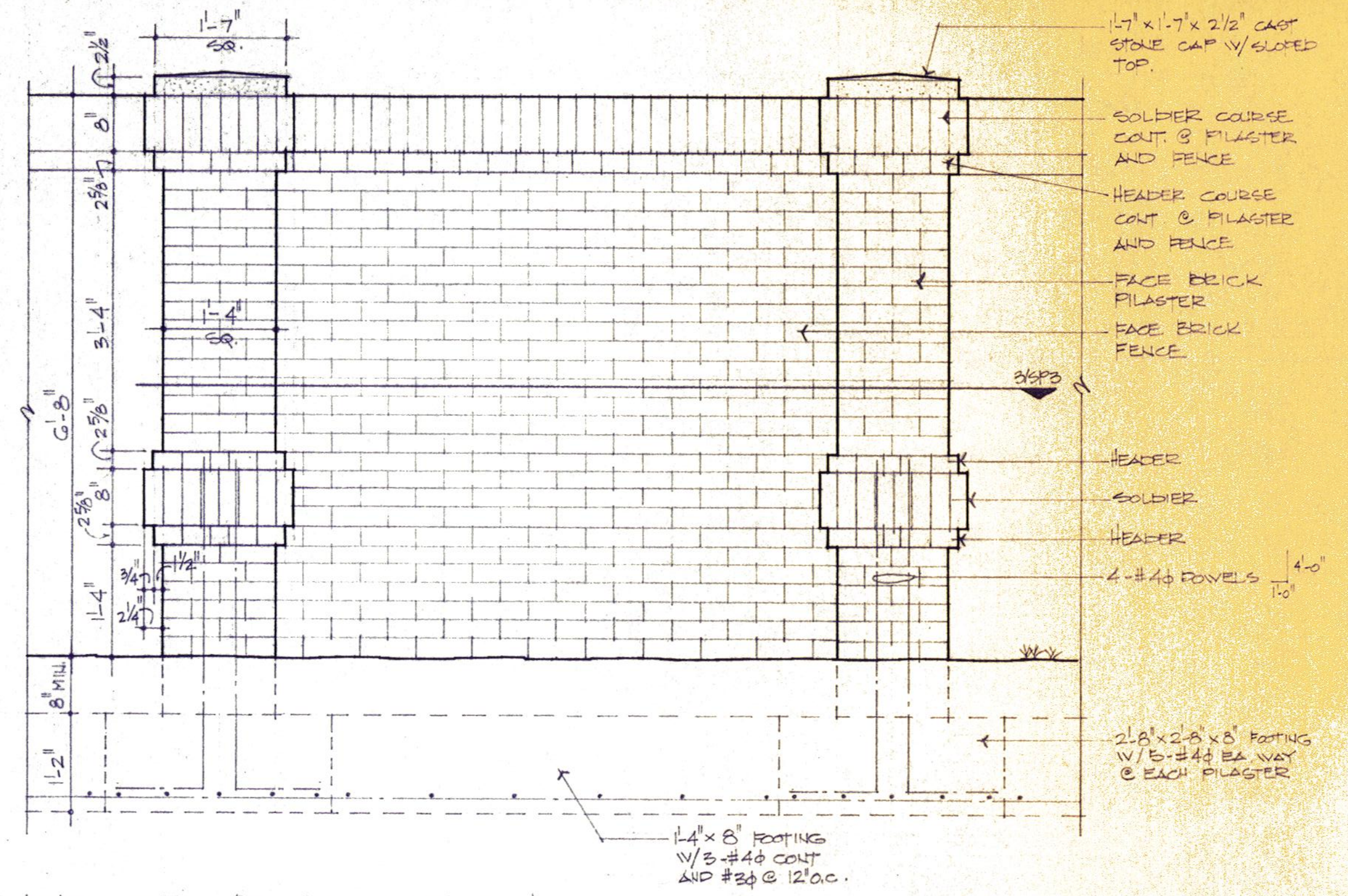


1 SITE PLAN - ALTERNATES

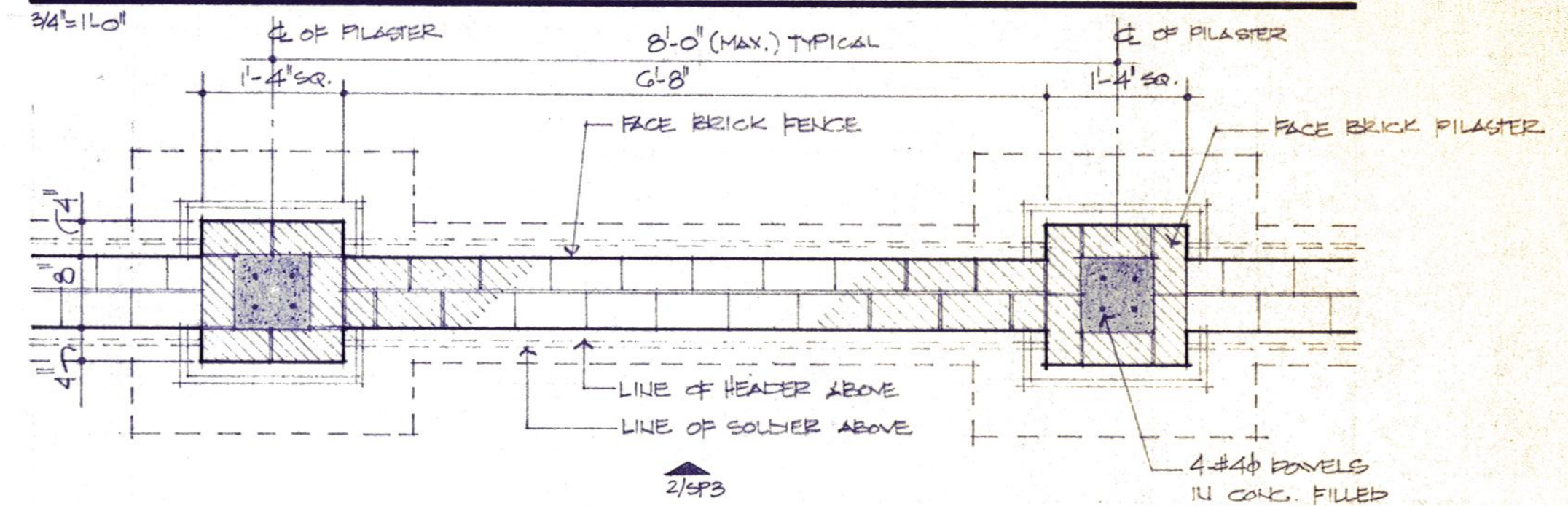
1" = 20'-0"

KEYNOTES (THIS SHEET ONLY)

- 1 REMOVE EXISTING CONC. SIDEWALK IN PHASE 3 DEMOLITION.
- 2 REMOVE PORTION OF EXISTING CONC. SIDEWALK IN PHASE 1 DEMOLITION.
- 3 REMOVE EXISTING CONC. CURB & GUTTER, IN PHASE 3 DEMOLITION.
- 4 REMOVE EXISTING ASPHALT DRIVE COMPLETE IN PHASE 3 DEMOLITION.
- 5 EXISTING SIDEWALK TO REMAIN.
- 6 EXISTING ELECTRICAL TRANSFORMER TO REMAIN.
- 7 EXISTING GASOLINE PUMPS TO REMAIN.
- 8 EXISTING DUMPSTER AND CONC. PAD TO REMAIN.
- 9 NEW CONC. CURB & GUTTER REFER G/SP2.
- 10 2" ASPHALT PARKING LOT ON G" LIME STABILIZED SUB BASE AND 8" CRUSHED STONE BASE.
- 11 G" CONC. DRIVE W/ #4 @ 18" O.C. ENV. ON 4" MIN. SAND FILL.
- 12 HANDICAPPED PARKING SIGN.
- 13 EXISTING CHAIN LINK SWING GATE RELOCATED IN NEW BRICK FENCE.
- 14 2" ASPHALT TOPPING ON EXISTING ASPHALT PARKING LOT.



FENCE ELEVATION (ALTERNATE #2)



FENCE PLAN (ALTERNATE #2)

GENERAL NOTES (THIS SHEET ONLY)

1. COORDINATE THIS SITE PLAN 1/6P3 WITH SHEET SP1 FOR ADDITIONAL NOTATION OF ITEMS.
2. COORDINATE THIS SITE PLAN 1/6P3 WITH SHEET SP2 FOR ADDITIONAL INFORMATION.
3. REFER SP2 FOR CONSTRUCTION FENCE.
4. REFER SPECS. FOR ADDITIONAL INFORMATION ON ALTERNATES RELATING TO THIS SHEET.

LEGEND	
99.2	EXISTING SPOT GRADE
99.92	NEW SPOT GRADE
TC	TOP OF CURB
FL	FLOW LINE
ME	MATCH EXISTING
MH	MANHOLE



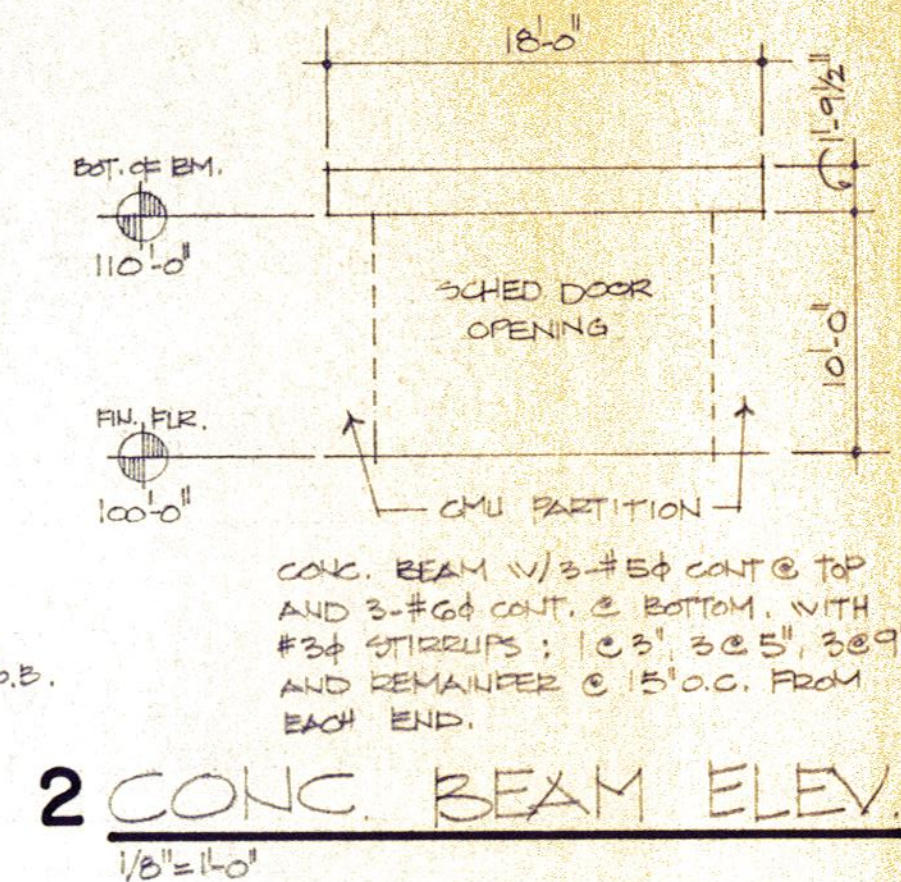
Daugherty & Glover, Inc.
ARCHITECTS & ENGINEERS
WICHITA FALLS, TEXAS 76794
2009 PLAZA PARKWAY, SUITE 400
(817) 693-3013

A New Maintenance Facility
DANIEL BUILDING
Midwestern State University
Wichita Falls, Texas

DD
SS
MM

DRAWN HACKBUSCH, B.
CHECKED DAUGHERTY
DATE JULY 11, 1989
JOB NUMBER 8907

SHEET
SP3
OF 3 VOLUME 1



FOR ENTRY FOR
FRAMING REF
1 & 2 / All.

NOTE: MOST JOISTS NOT SHOWN FOR CLARITY.
ALL JOIST SPACING '2'-0" O.C. UNLESS OTHERWISE NOTE
W/ GRID '1' THRU '9' INCLUSIVE STARTING POINTS OF JOIST
LAYOUT

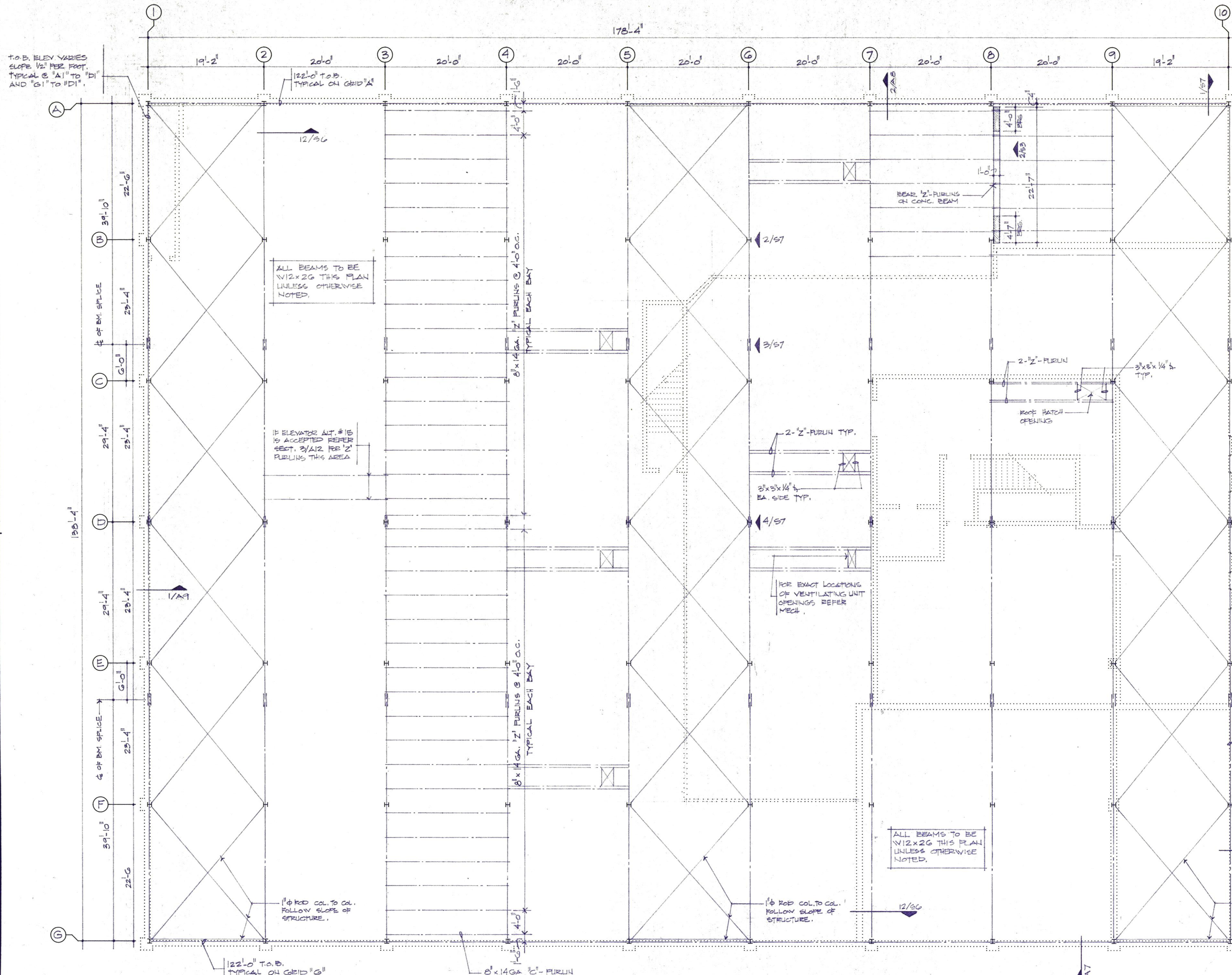
Daugherty
& Glover, inc.

A New Maintenance Facility
DANIEL BUILDING
Midwestern State University
Wichita Falls, Texas

2000
 2000
 2000

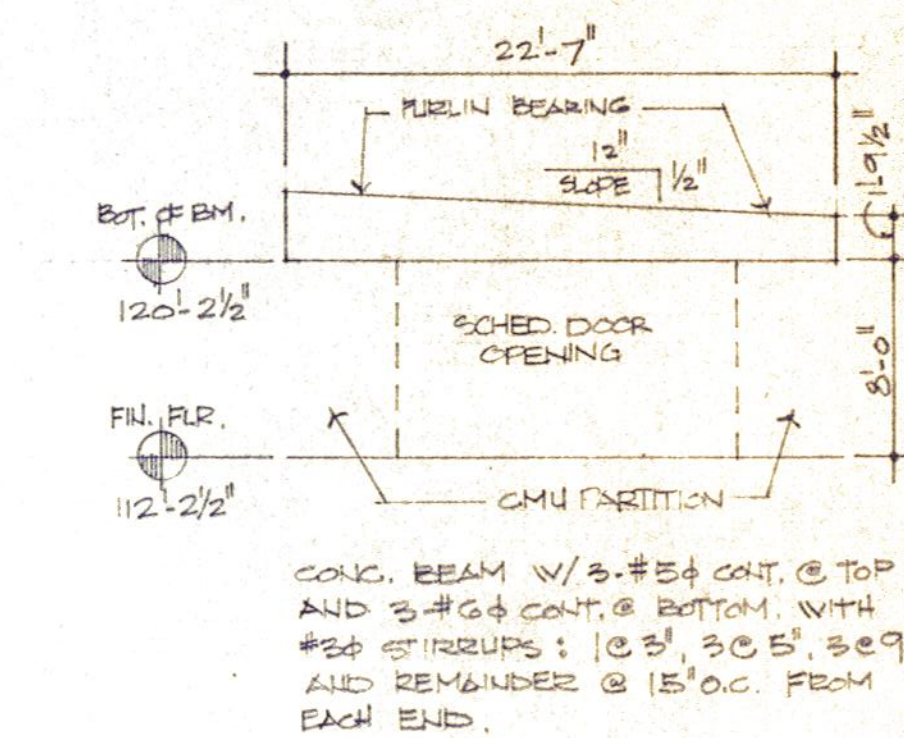
S2

OF 7 VOLUME



1 ROOF FRAMING PLAN

1/8" = 1'-0"
 NOTE: MOST PURLINS NOT SHOWN FOR CLARITY.
 REFER TYPICAL BAY "A-3" TO "G-4".



2 CONC. BEAM ELEV.

1/8" = 1'-0"



Daugherty & Glover, Inc.
 ARCHITECTS & ENGINEERS
 1001 N. W. 10TH AVE., SUITE 200
 WICHITA FALLS, TEXAS 76798
 (817) 261-2813

A New Maintenance Facility
DANIEL BUILDING
 Midwestern State University
 Wichita Falls, Texas

DD
SS
MM

DRAWN HACKBUECH, J.

CHECKED GLOVER

DATE JULY 11, 1989

JOB NUMBER 8907

SHEET

S3

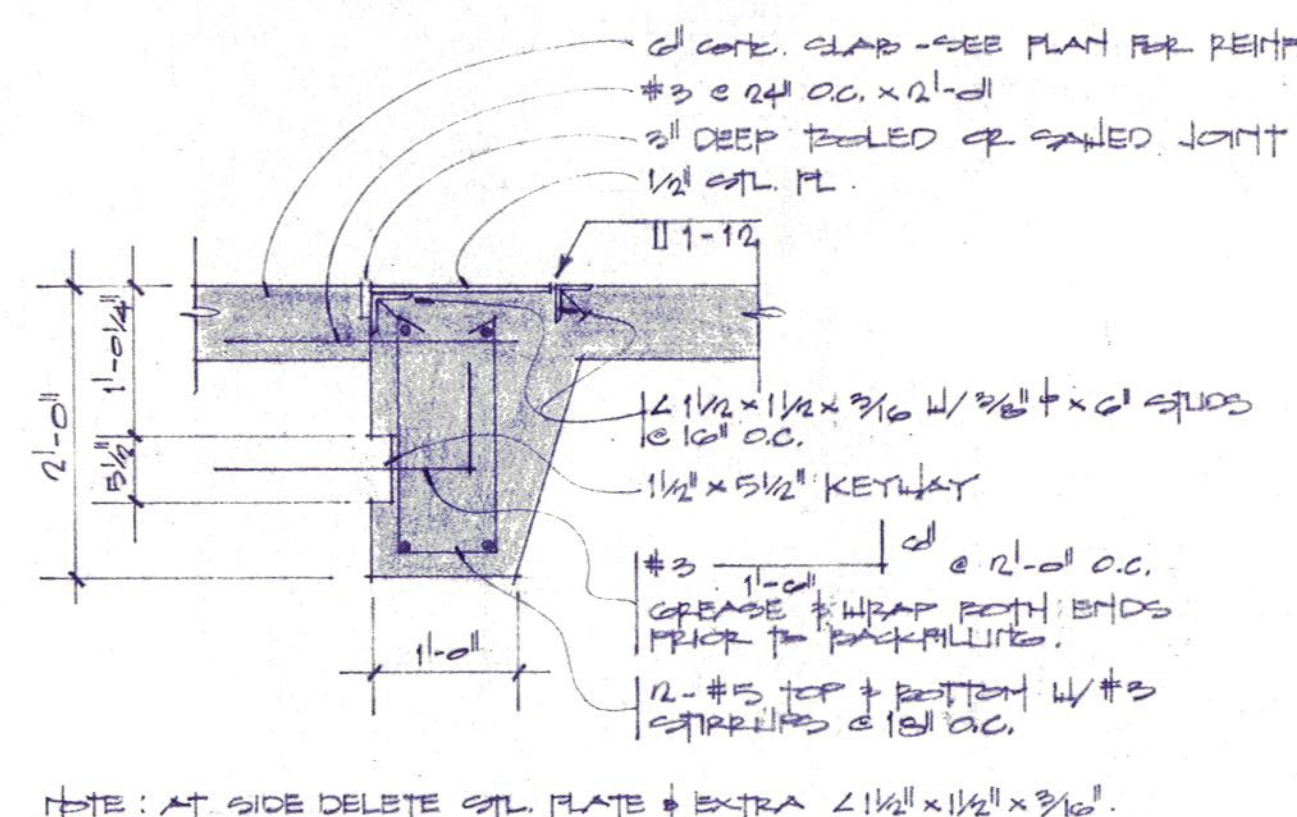
OF 7 VOLUME I

TYPE	BAR BENDING DIAGRAM						
	SUP'T	SPAN L1	SUP'T	SPAN L2	SUP'T	SPAN L3	SUP'T
	WIDTH	(CLR. SPAN)	WIDTH	(CLR. SPAN)	WIDTH	(CLR. SPAN)	WIDTH
a	2" CLR.			.2 x L1 OR .2 x L2 *			
b	6"		6"				
c	*.2 x L1 OR .2 x L2				.2 x L1 OR .2 x L2 *		
d	2" CLR.		2" CLR.				
e	2" CLR.	EMBEDMENT OR SPLICE LENGTH					
f	2" CLR.			2" CLR.			
g							
x							
y							

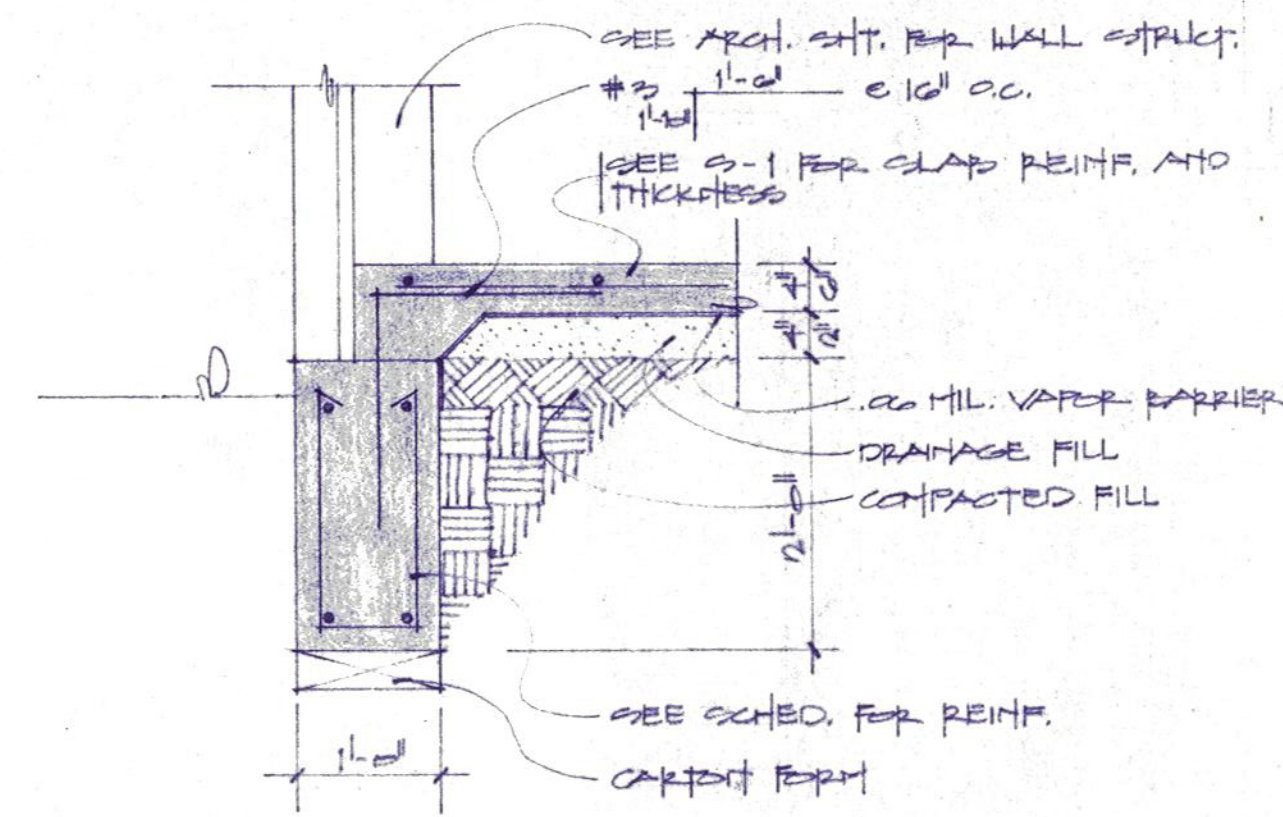
CONCRETE QUALITY SCHEDULE					
LOCATION	28 DAY STRENGTH LAB CURED CYLINDERS	28 DAY STRENGTH CORES	MAX. AGGREGATE SIZE	CEMENT SACKS / YRD.	SLUMP +/- 1"
GRADE BEAMS, DECK FILL, SLABS, AND GRADE	3450	3000	3/4	6 1/4	3 1/2
DRILLED PIERS	3450	3000	1 1/2	5 1/2	5
BLOCK FILL & UNBELS	2875	2500	3/8	6 3/4	9
DESIGNS DO NOT CONSIDER ADDITIVES					

PIER SCHEDULE						
MK.	SHAFT DIA.	BELL DIA.	REINFORCING		EST. ELEV.	
			VERTICAL	TIES	TOP	BOTTOM
A	2'-0"	3'-0"	6-#8	#3@10"X	97.35	62.0
B	2'-0"	4'-0"	6-#8	#3@10"X	97.35	62.0
C	2'-0"	3'-0"	6-#8	#3@10"X	97.35	62.0
D	2'-0"	4'-0"	6-#8	#3@10"X	97.35	62.0
E	2'-0"	2'-0"	6-#8	#3@10"X	97.35	62.0
F	2'-0"	2'-0"	6-#8	#3@10"X	97.35	62.0
G	2'-0"	4'-0"	6-#8	#3@10"X	97.35	62.0
H	2'-0"	5'-0"	6-#8	#3@10"X	97.35	62.0
J	2'-0"	3'-0"	6-#8	#3@10"X	97.35	62.0
K	2'-0"	3'-0"	6-#8	#3@10"X	97.35	62.0
FOOTINGS SHALL BEAR ON SHALE						

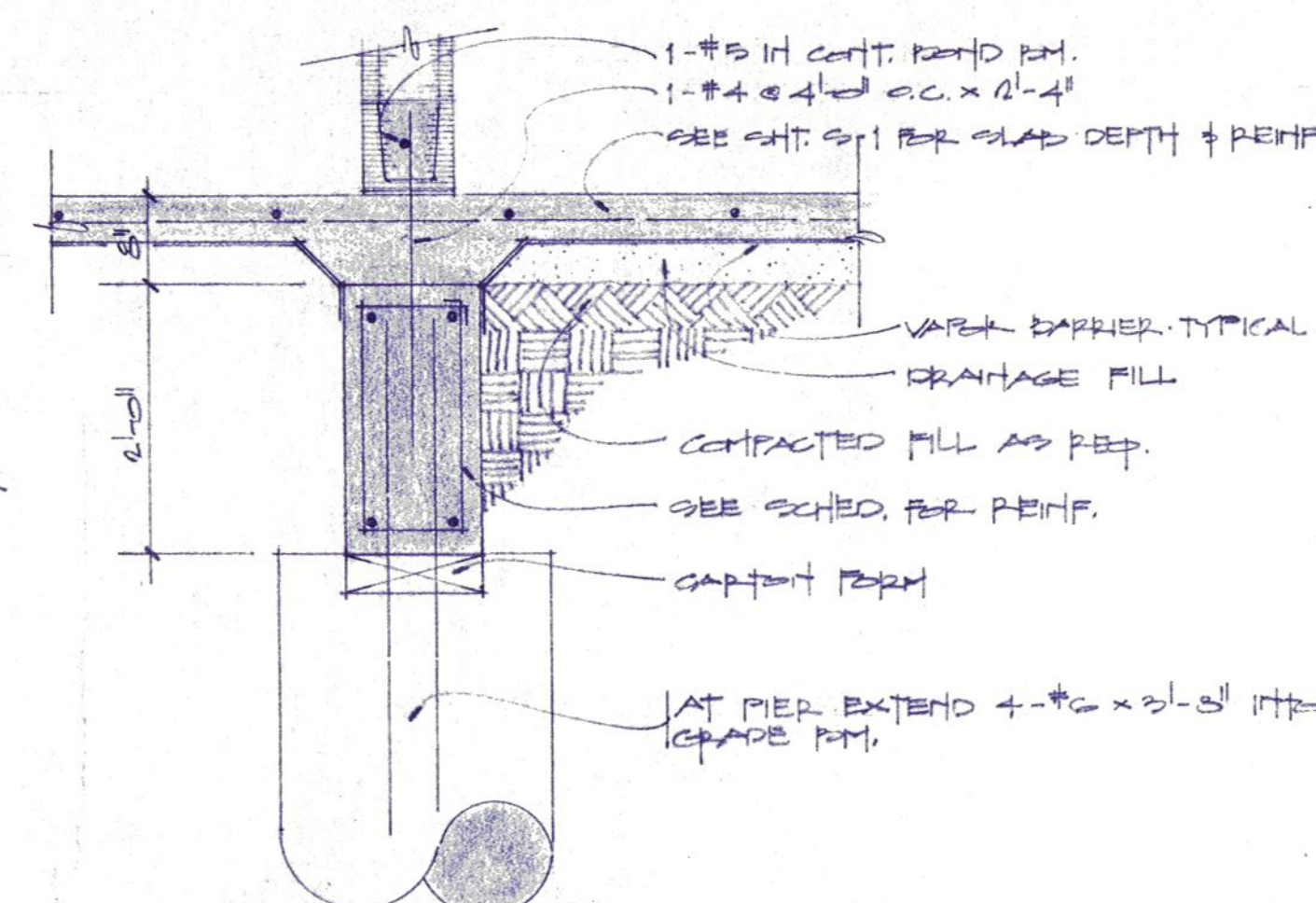
GRADE BEAM SCHEDULE											
BEAM	MK.	W	D	BOTTOM		INTER. REINF.	TOP		STIRRUPS (REFER STIRRUP DIAGRAM)		REMARKS
				REINF.	TYPE		REINF.	TYPE	SIZE	TYPE	
										SP. FROM EA. END	
GB1	12	24	24	2-#6	b	—	2-#4	a	#3	X	1@2.4@10, BAL @ 24
GB2	12	24	24	2-#6	b	—	2-#4	c	#3	X	1@2.4@10, BAL @ 24
GB3	12	24	24	2-#6	b	—	2-#4	a	#3	X	1@2.4@10, BAL @ 24
GB4	12	24	24	2-#6	b	—	2-#4	c	#3	X	1@2.4@10, BAL @ 24
GB5	12	24	24	2-#7	b	—	2-#4	c	#3	Y	1@2.9@10, BAL @ 24
GB6	12	24	24	2-#7	b	—	2-#7	c	#3	Y	1@2, BAL @ 10
GB7	12	24	24	2-#6	b	—	2-#4	a	#3	X	1@2.5@10, BAL @ 24
GB8	12	24	24	2-#6	b	—	2-#4	c	#3	X	1@2.5@10, BAL @ 24
GB9	12	24	24	2-#6	b	—	2-#5	c	#3	Y	1@2.4@10, BAL @ 24
GB10	12	24	24	2-#7	b	—	2-#6	c	#3	X	1@2.9@10, BAL @ 24
GB11	12	24	24	2-#8	b	—	2-#7	c	#3	X	1@2.9@10, BAL @ 24
GB12	12	24	24	2-#8	b	—	2-#5	c	#3	X	1@2, BAL @ 10
GB13	12	24	24	2-#6	b	—	2-#5	c	#3	X	1@2.5@10, BAL @ 24
GB14	12	24	24	2-#6	b	—	2-#5	c	#3	Y	1@2.7@10, BAL @ 24
GB15	12	24	24	2-#6	b	—	2-#4	c	#3	Y	1@2.6@10, BAL @ 24
GB16	12	24	24	2-#6	b	—	2-#5	a	#3	Y	1@2.6@10, BAL @ 24
GB17	12	24	24	2-#8	b	—	2-#7	a	#3	Y	1@2.9@10, BAL @ 24
GB18	12	24	24	2-#8	b	—	2-#7	c	#3	Y	1@2.9@10, BAL @ 24
GB19	12	24	24	2-#8	b	—	2-#7	c	#3	Y	1@2.10@10, BAL @ 24
GB20	12	24	24	2-#6	b	—	2-#7	c	#3	Y	1@2, BAL @ 10
GB21	12	24	24	2-#8	b	—	2-#8	d	#3	Y	1@2.8@10, BAL @ 24
GB22	12	24	24	2-#6	b	—	2-#5	a	#3	Y	1@2.10@10, BAL @ 24
GB23	12	24	24	2-#7	b	—	2-#5	a	#3	Y	1@2.10@10, BAL @ 24
GB24	12	24	24	2-#6	b	—	2-#5	a	#3	Y	1@2.8@10, BAL @ 24
GB25	12	24	24	2-#7	b	—	2-#6	a	#3	Y	1@2.9@10, BAL @ 24
GB26	12	24	24	2-#7	b	—	2-#6	c	#3	X	1@2.8@10, BAL @ 24
GB27	12	24	24	2-#5	b	—	2-#5	d	#3	X	1@2, BAL @ 24
GB28	12	24	24	2-#7	b	—	2-#7	d	#3	X	1@2.7@10, BAL @ 24
GB29	12	24	24	2-#7	b	—	2-#6	d	#3	Y	1@2, BAL @ 10
GB30	12	24	24	2-#5	b	—	2-#5	d	#3	X	1@2, BAL @ 24
GB31	12	24	24	2-#5	b	—	2-#6	d	#3	Y	1@2.6@10, BAL @ 24
GB32	12	24	24	2-#8	b	—	2-#6	a	#3	X	1@2.4@10, BAL @ 24
GB33	12	24	24	2-#6	b	—	2-#6	a	#3	Y	1@2.9@10, BAL @ 24
GB34	12	24	24	2-#6	b	—	2-#8	f	#3	Y	1@2, BAL @ 6
GB35	20	24	24	2-#6	b	—	2-#6	d	#3	X	1@2.8@10, BAL @ 24
GB36	20	24	24	2-#6	b	—	2-#4	d	#3	X	1@2, BAL @ 24



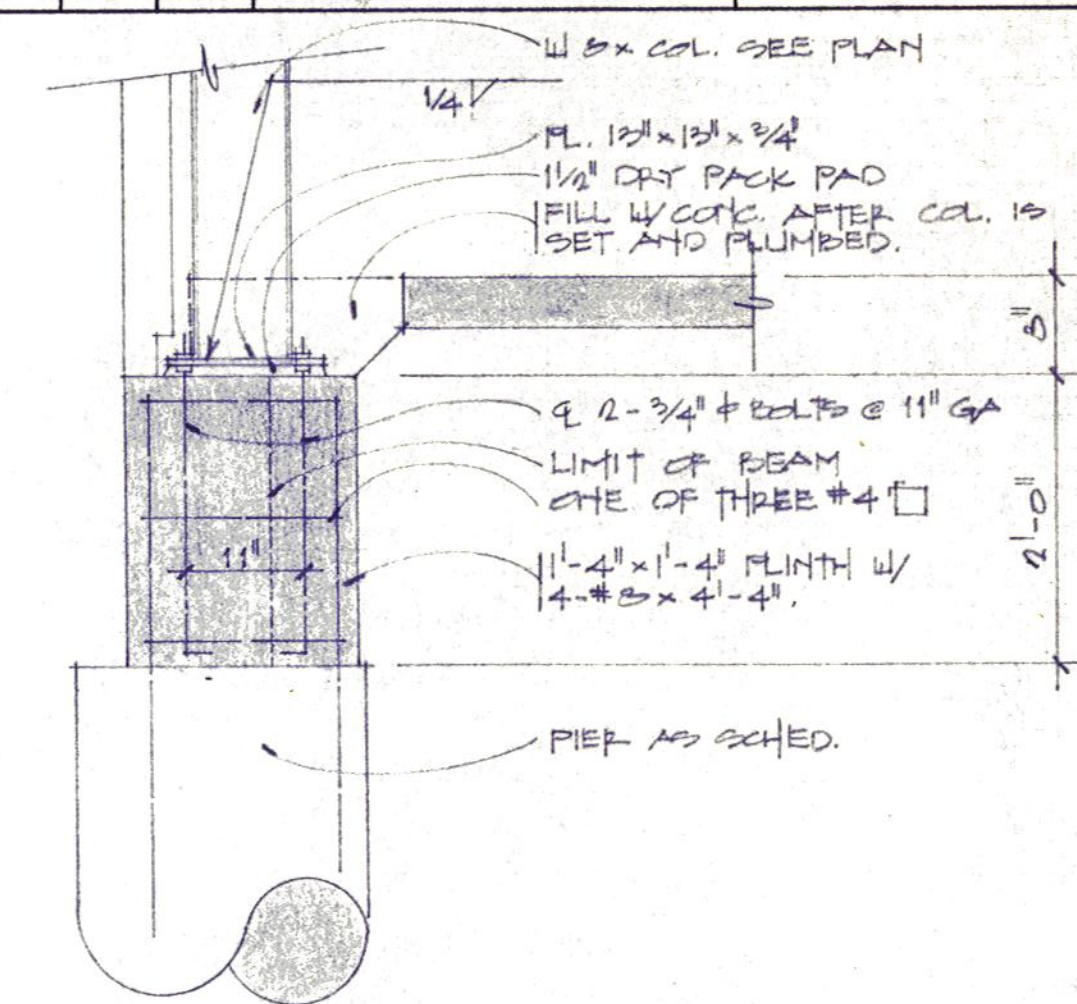
1 DETAIL
3/4" = 1'-0"



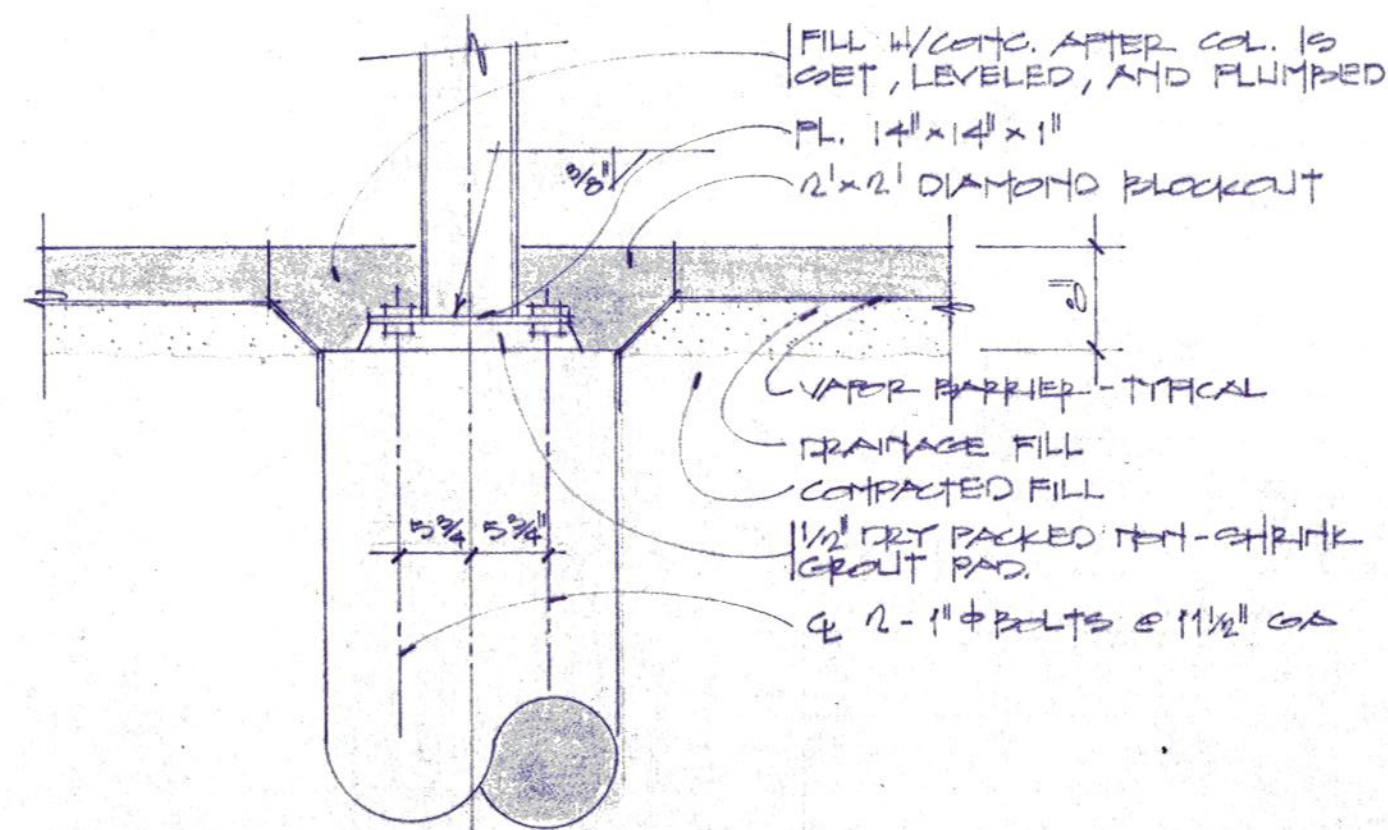
2 DETAIL
3/4" = 1'-0"



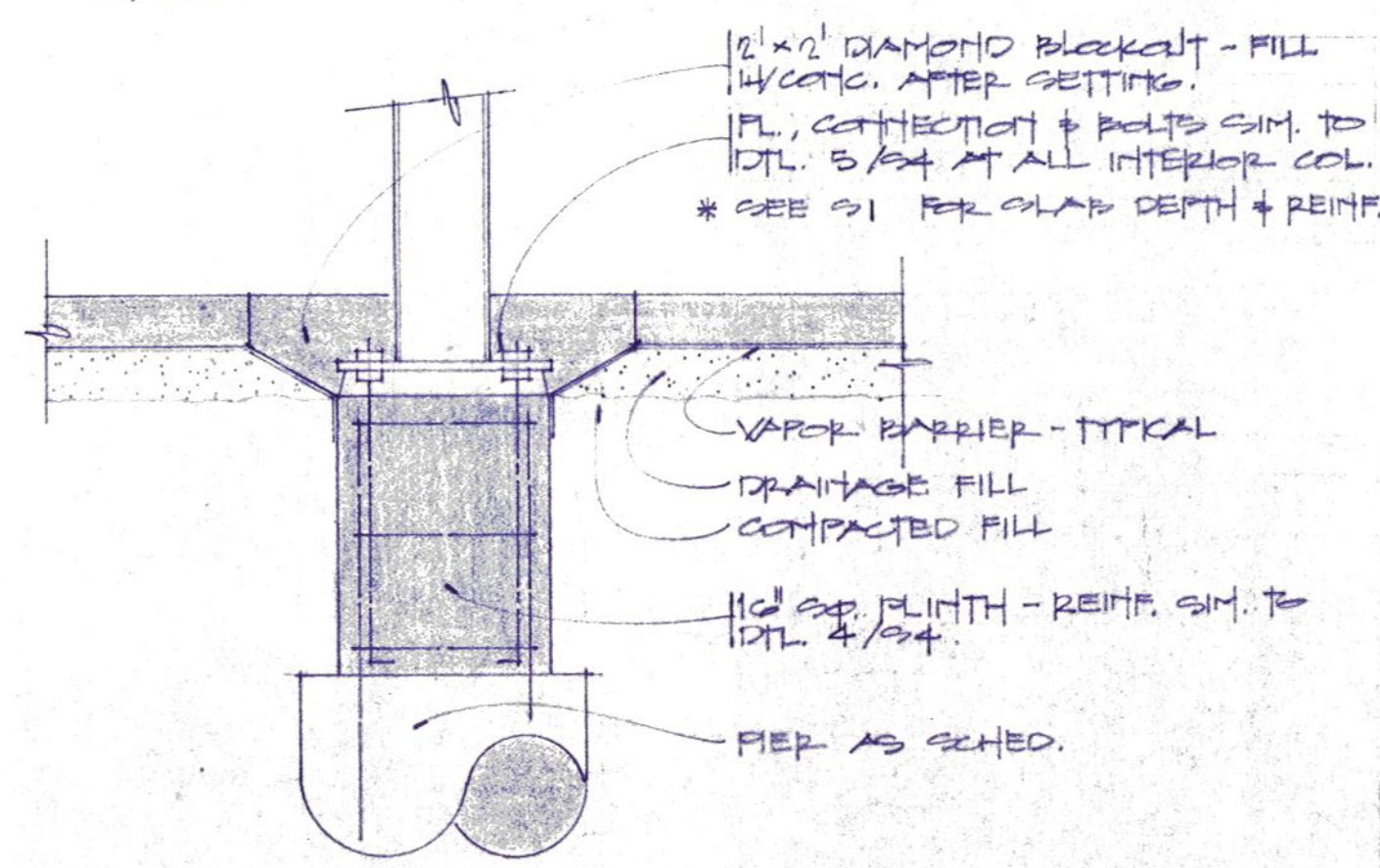
3 DETAIL
3/4" = 1'-0"



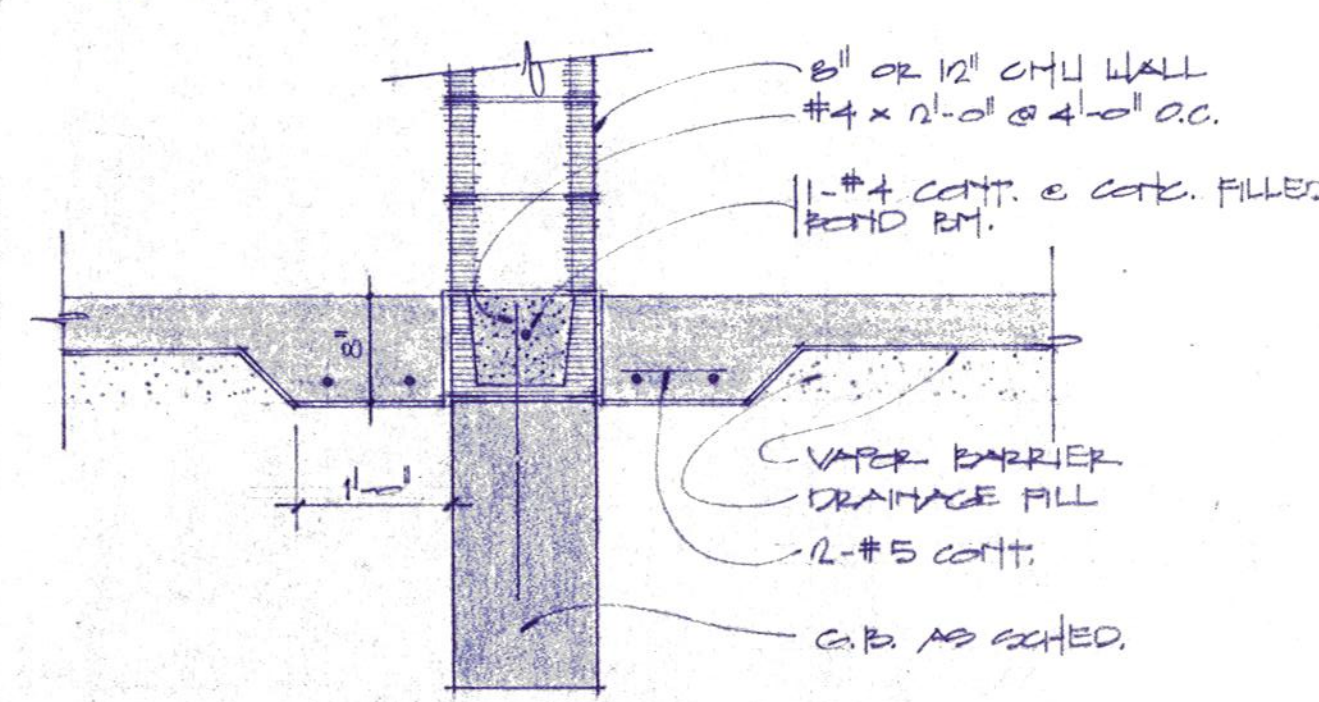
4 DETAIL
3/4" = 1'-0"



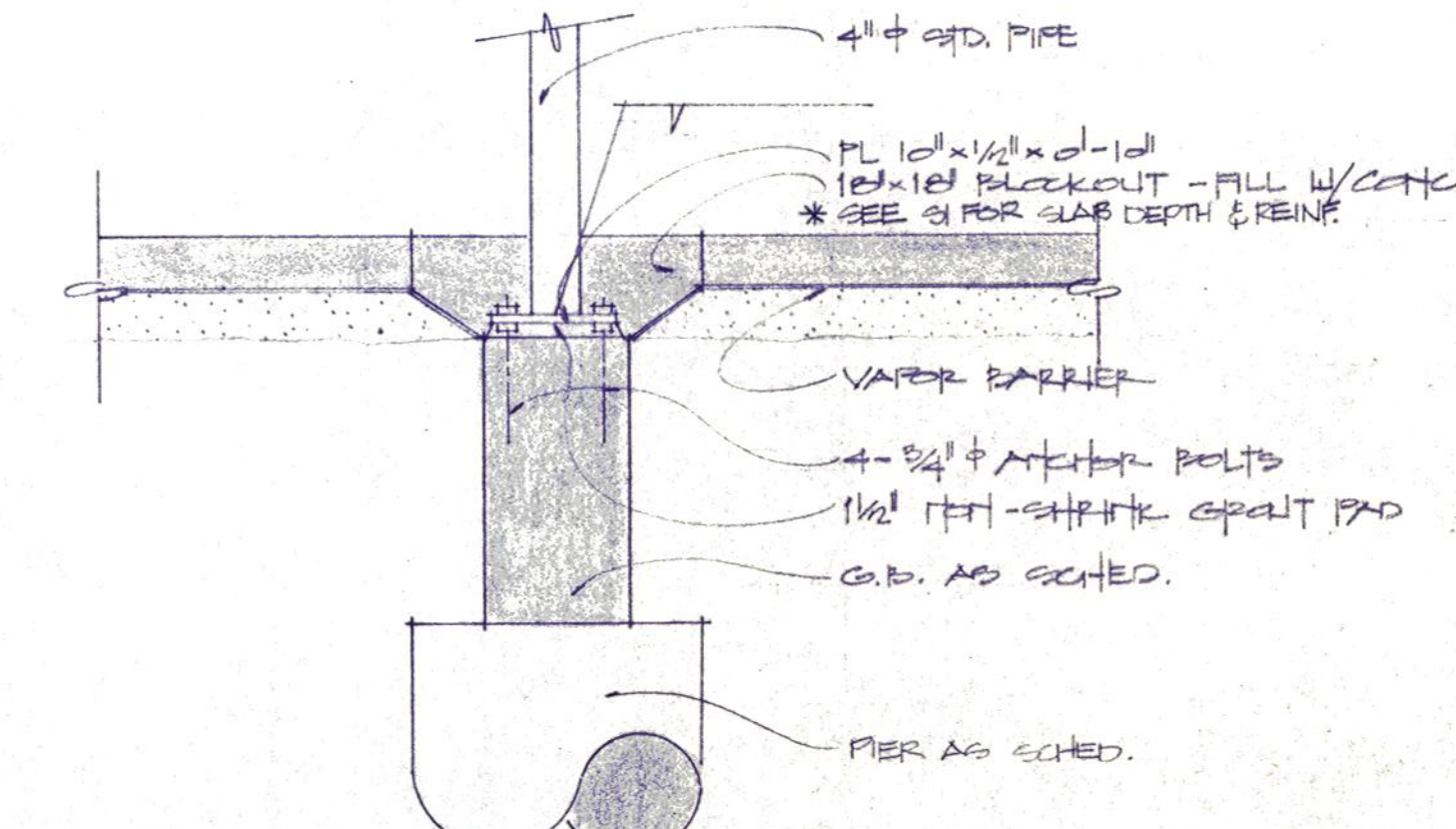
5 DETAIL
3/4" = 1'-0"



6 DETAIL
3/4" = 1'-0"



7 DETAIL
3/4" = 1'-0"



8 DETAIL
3/4" = 1'-0"



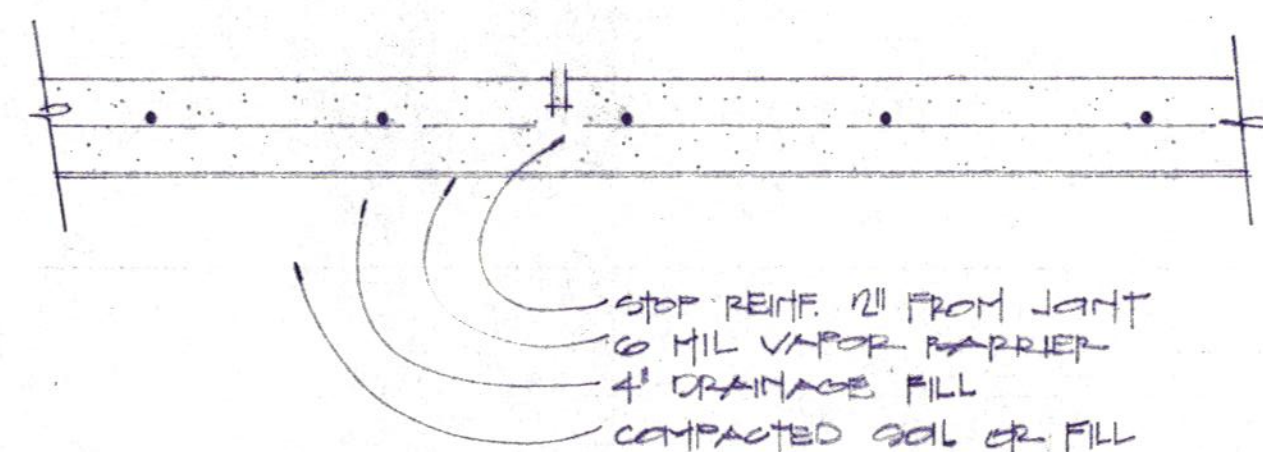
Daugherty & Glover, Inc.
ARCHITECTS & ENGINEERS
2829 PLAZA PARKWAY, SUITE 44
WICHITA FALLS, TEXAS 76308
(817) 691-3013

A New Maintenance Facility
DANIEL BUILDING
Midwestern State University
Wichita Falls, Texas



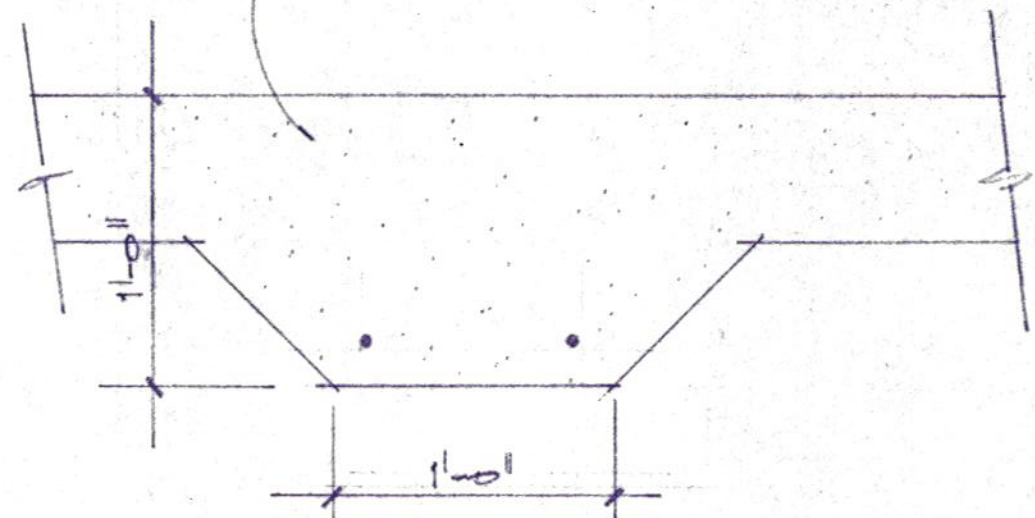
DRAWN GOMEZ/PARK
CHECKED GLOVER
DATE JULY 11, 1989
JOB NUMBER 8907
SHEET
S4
OF 7 VOLUME 1

1/2" x 1" DEEP TROWLED OR SAWED JT.

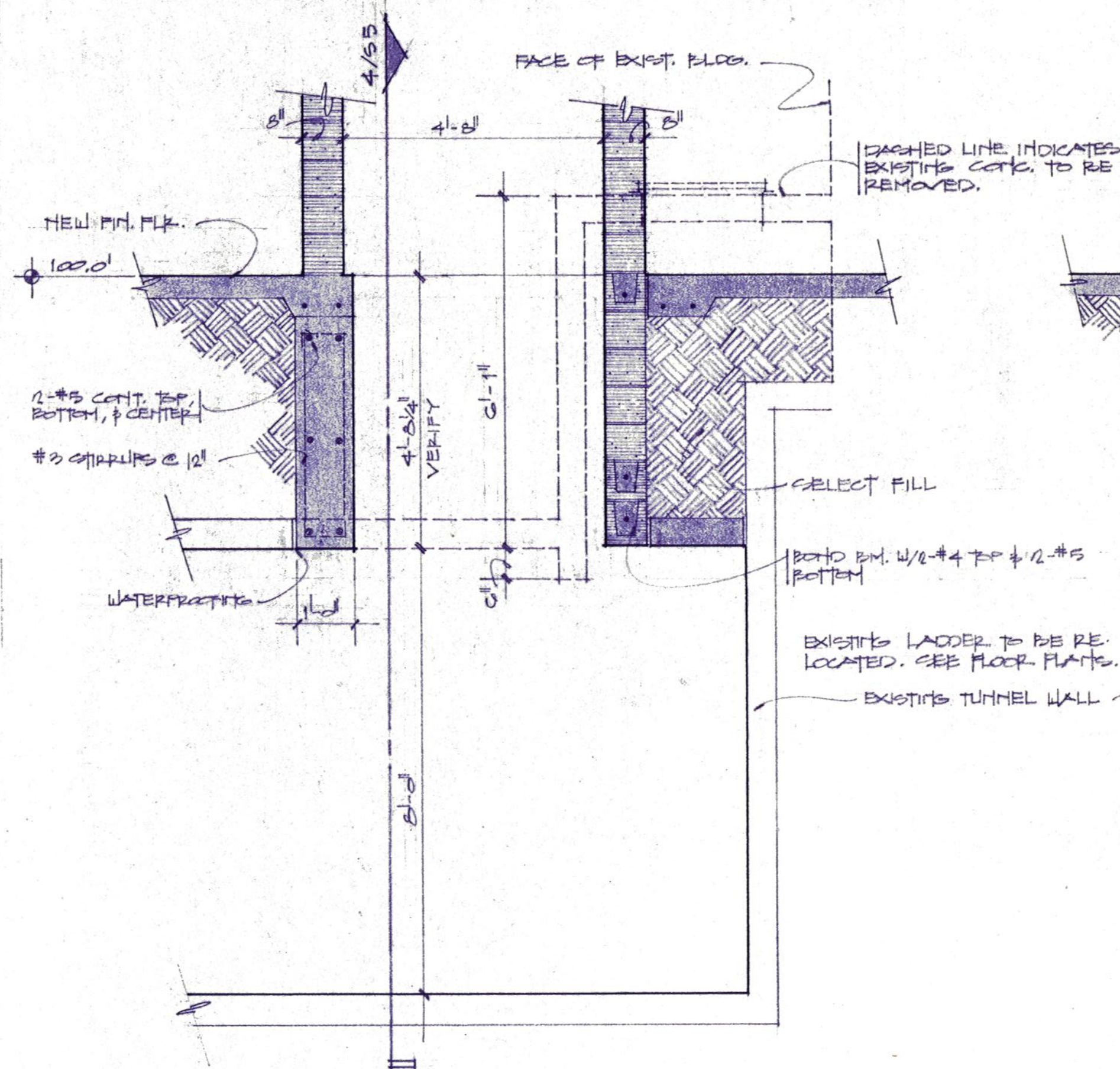


1 TYPICAL CONTROL JOINT
1/2" = 1'-0"

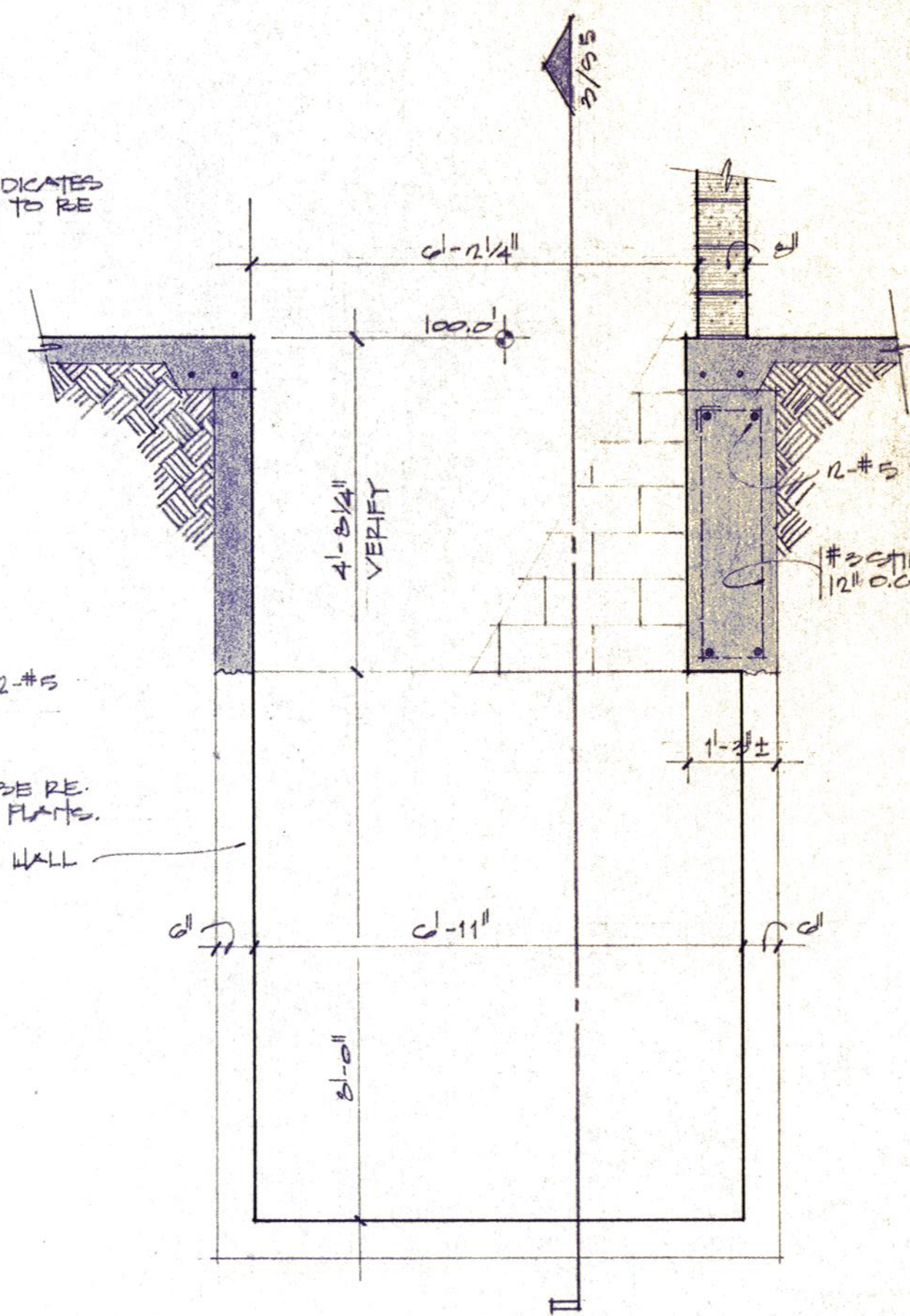
PROVIDE TYPICAL THICKENED SLAB W/ 2-#5 @ 12" BOTTOM UNDER ALL MASONRY WALLS NOT SUPPORTED ON GRADE RM.



2 DETAIL - TYP. @ THICKENED SLAB
1/2" = 1'-0"



3 SECTION AT TUNNEL
1/2" = 1'-0"



4 SECTION AT TUNNEL
1/2" = 1'-0"

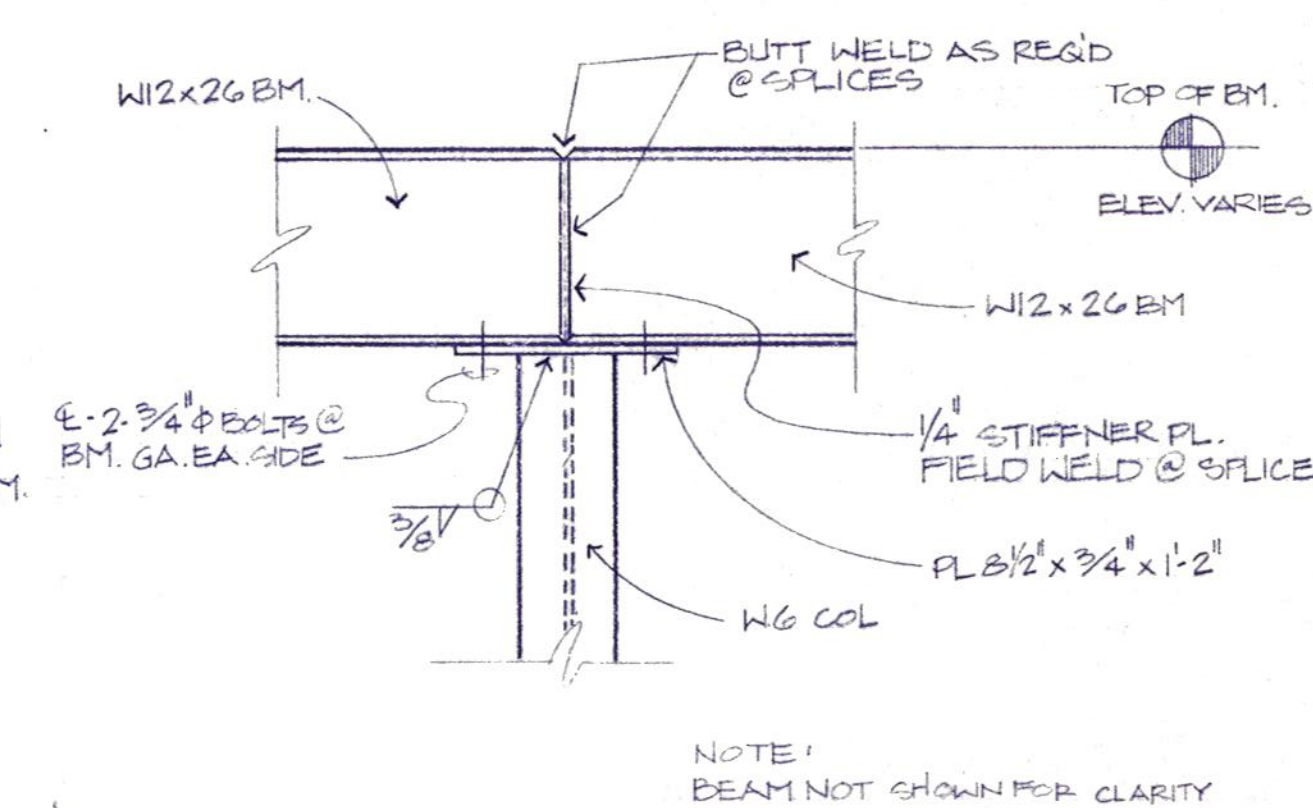
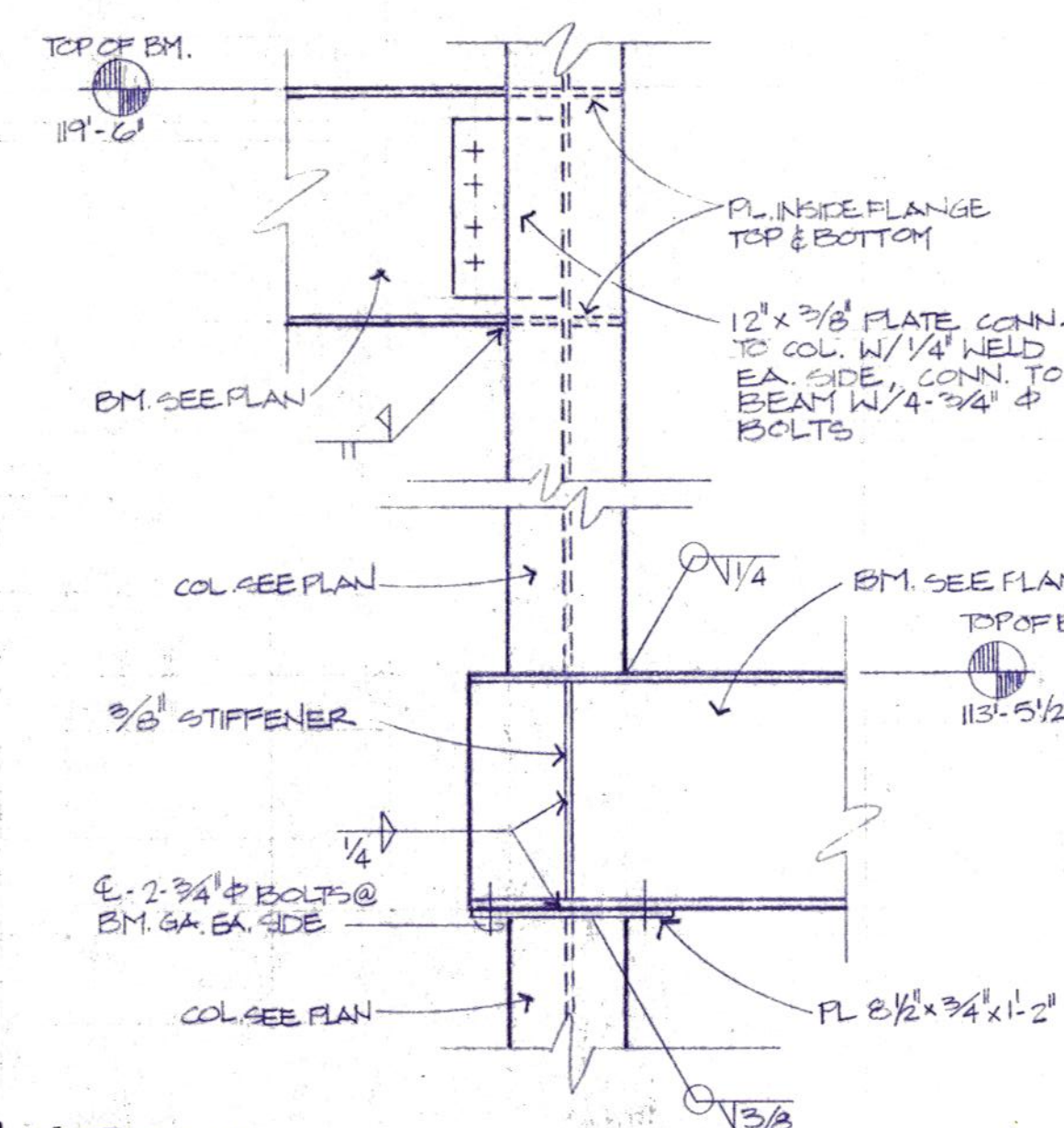
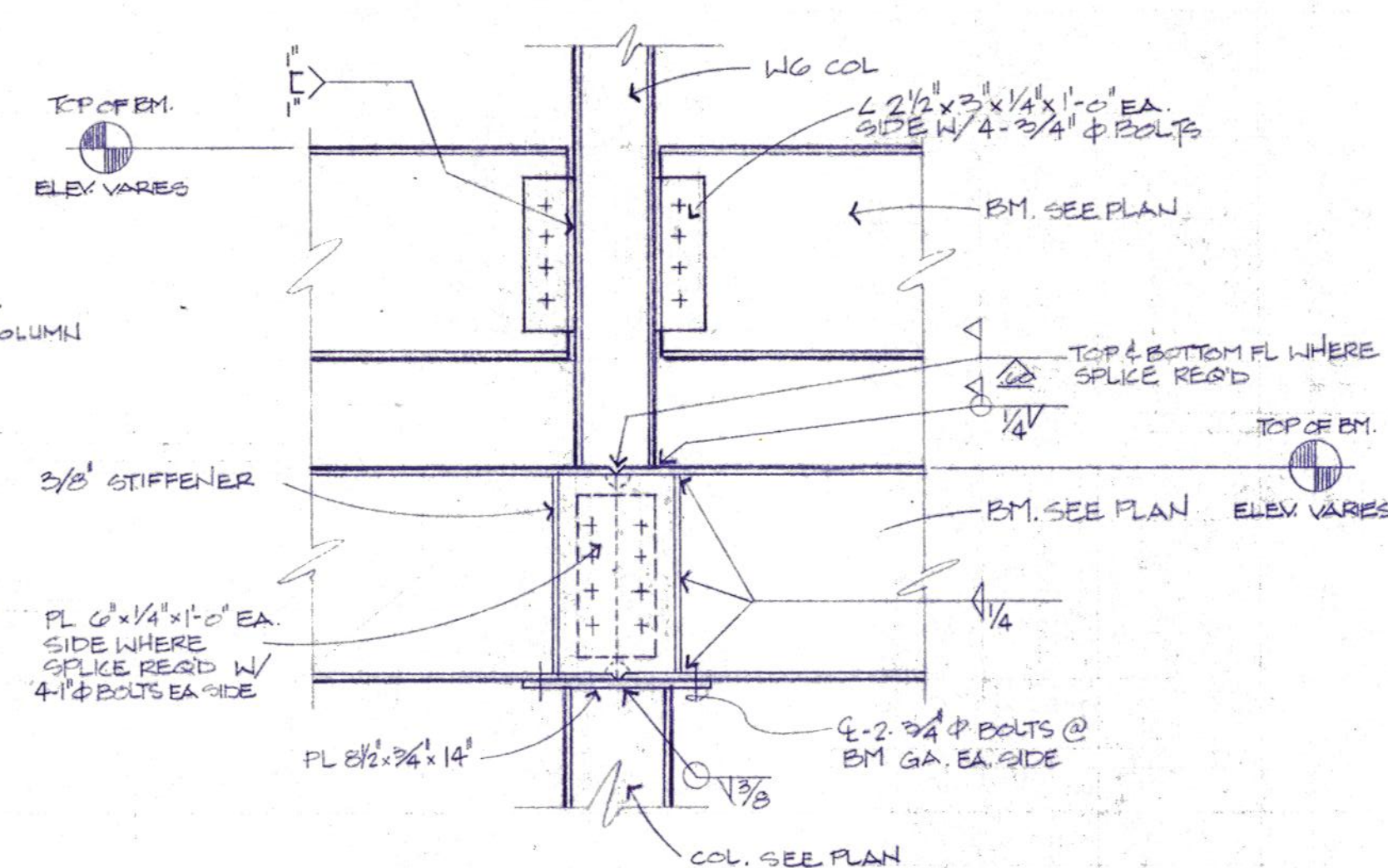
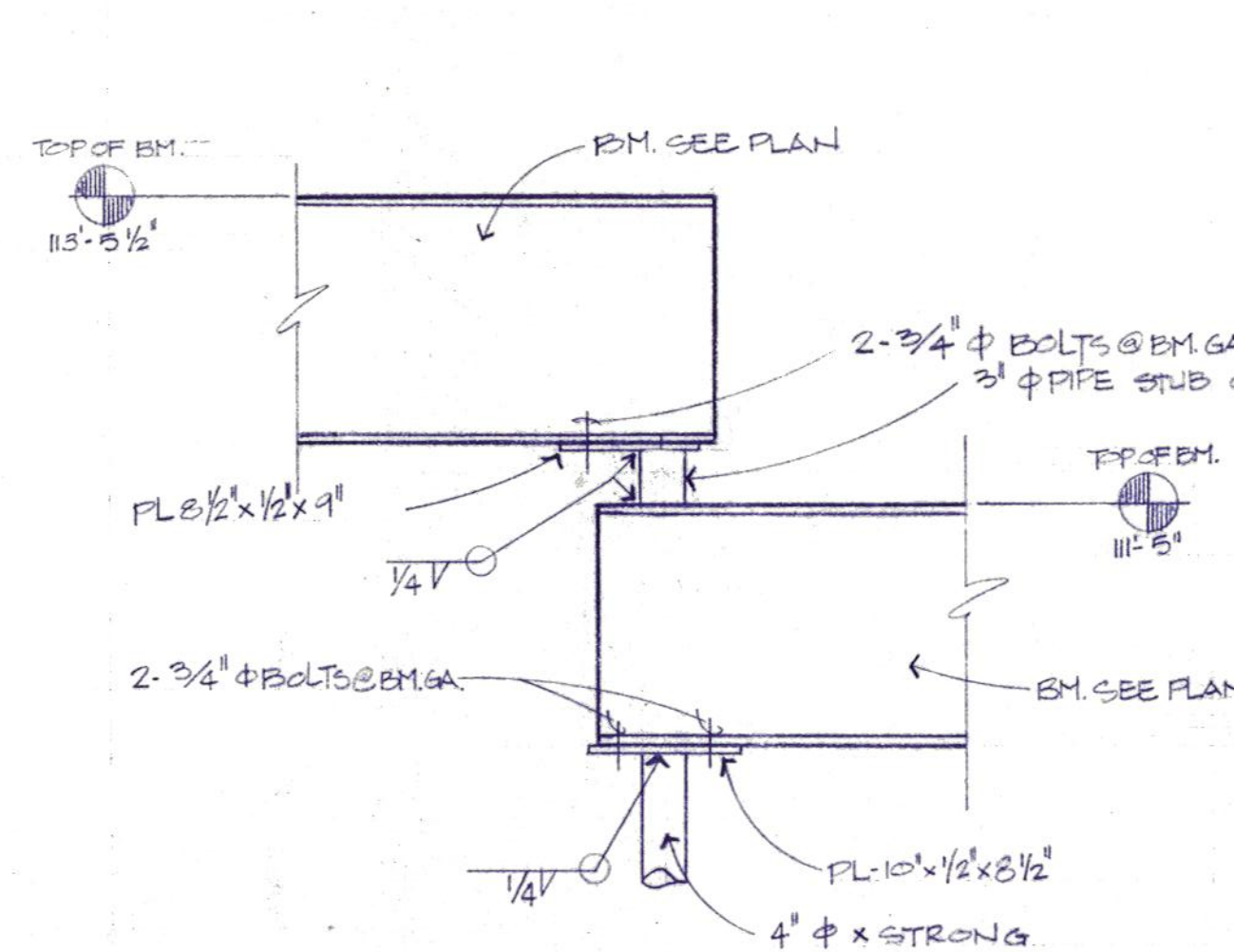
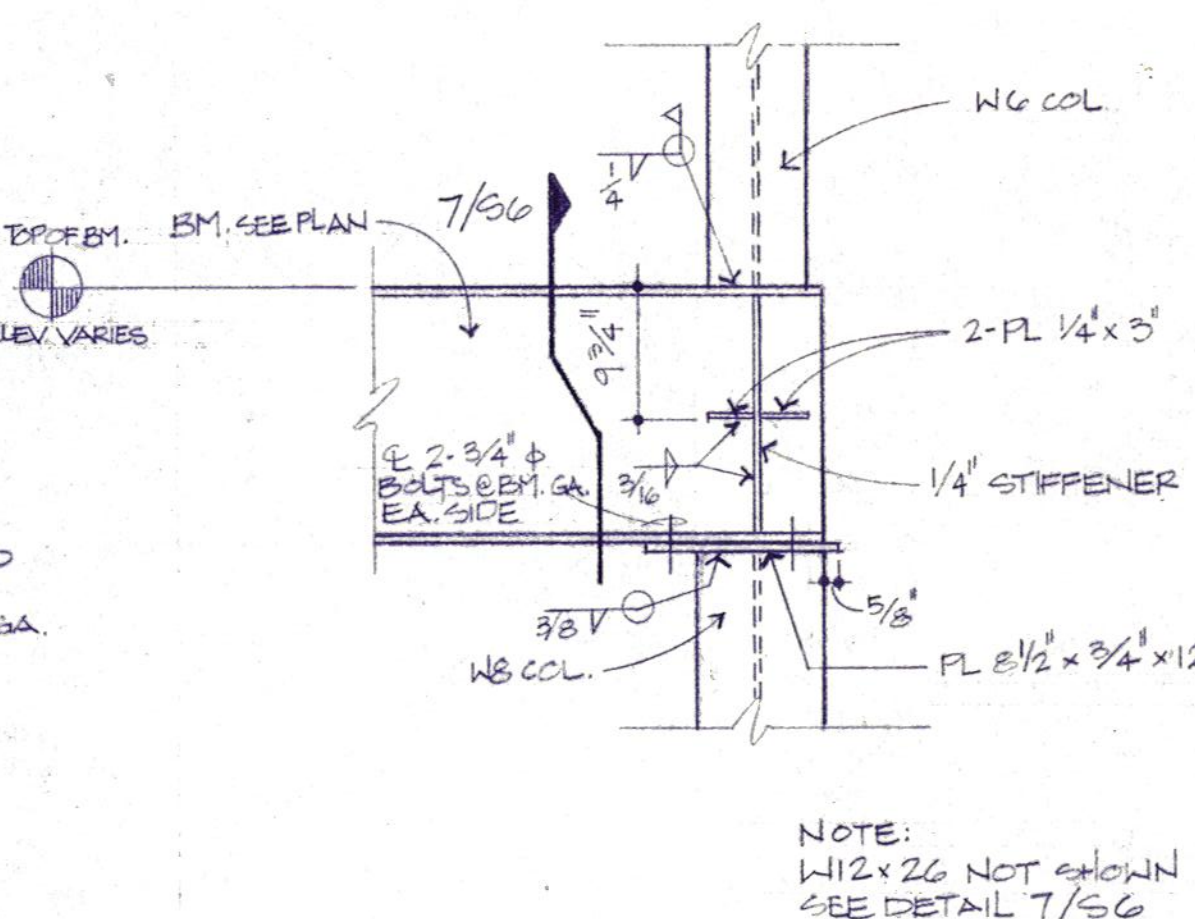
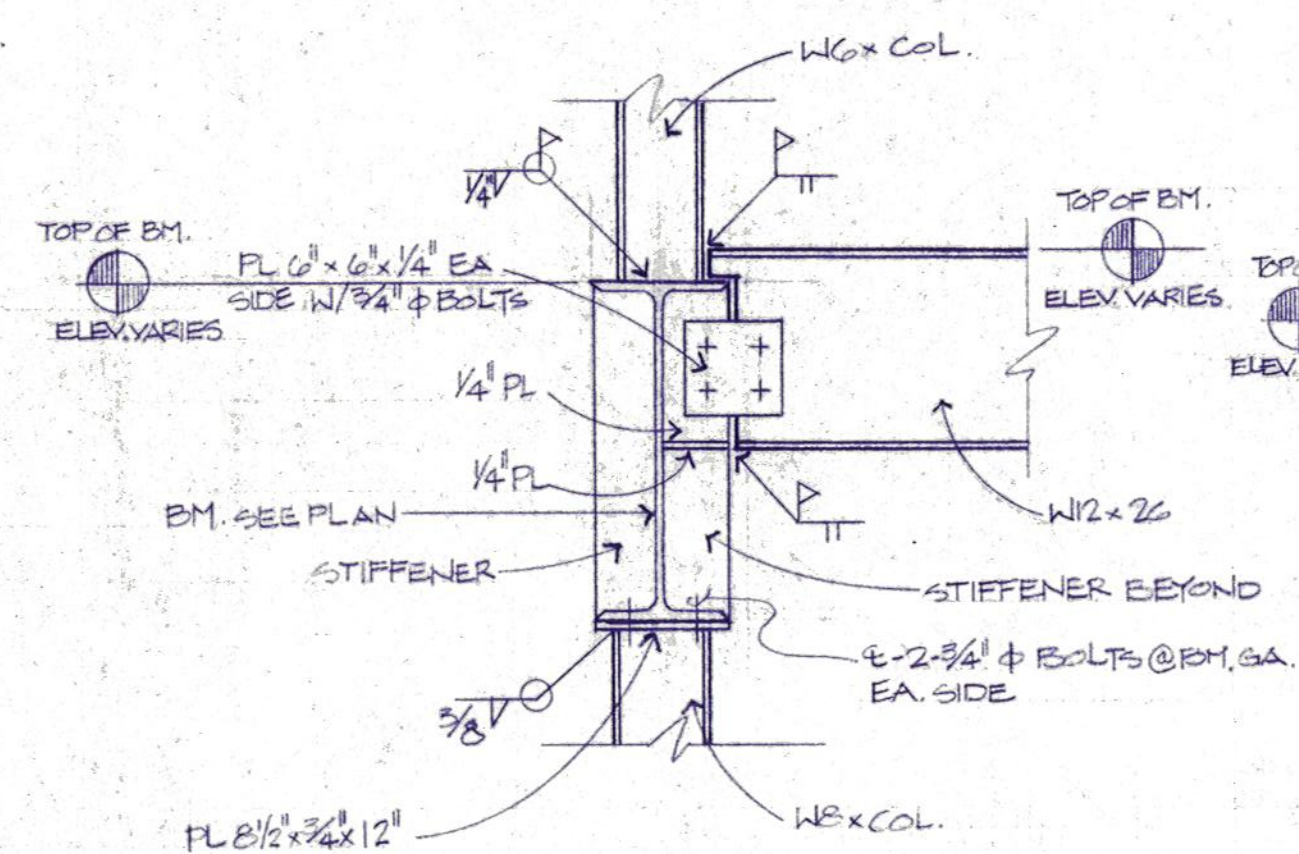
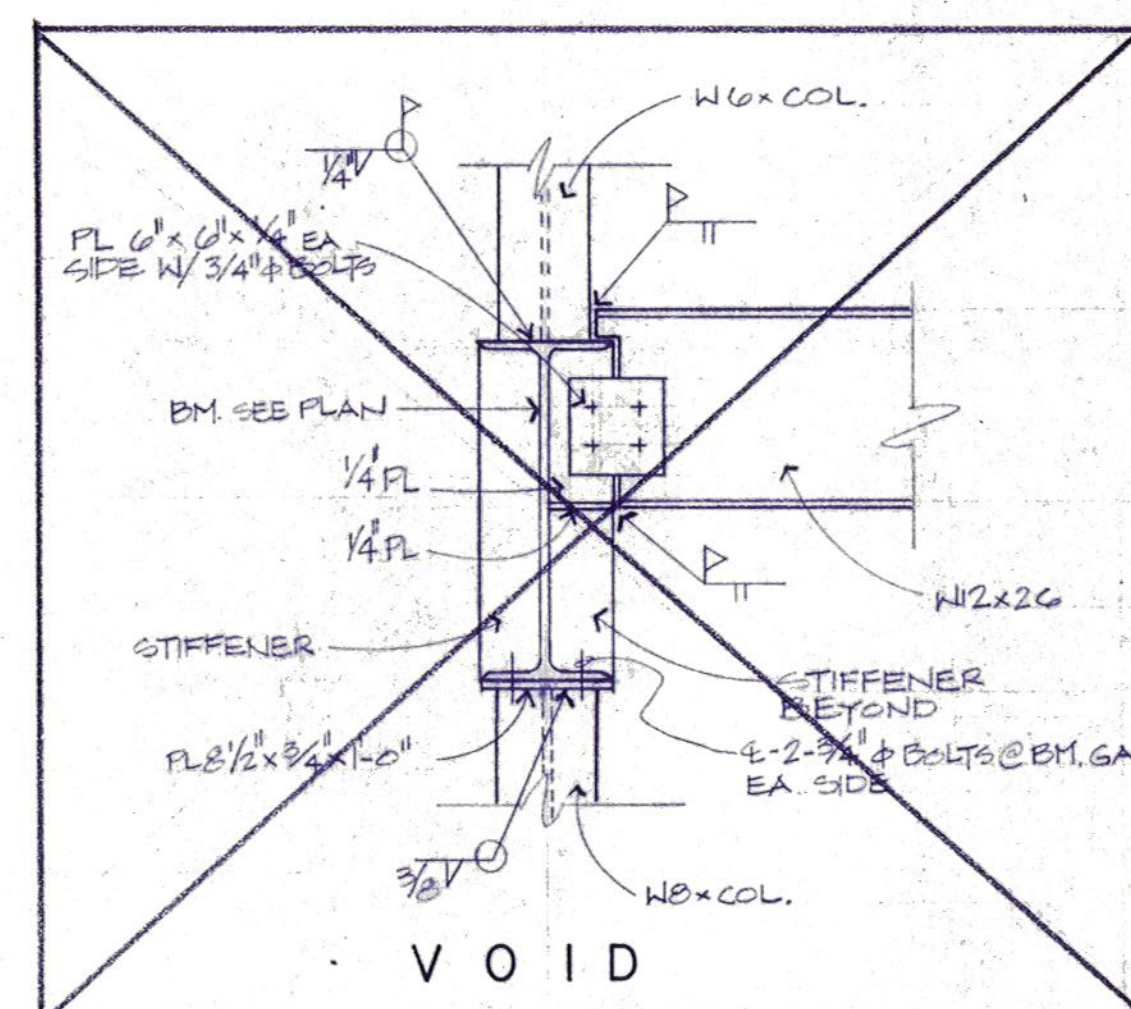
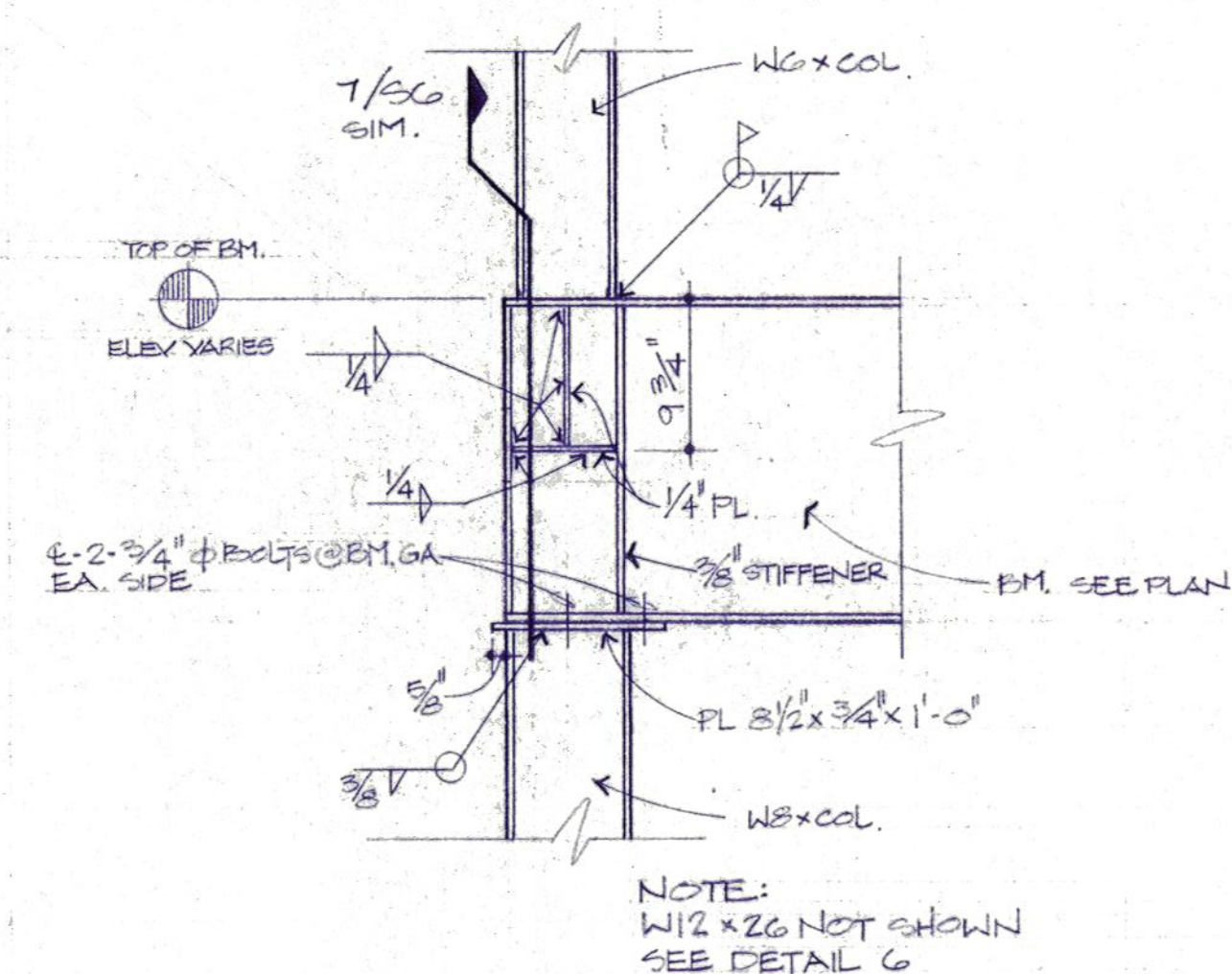
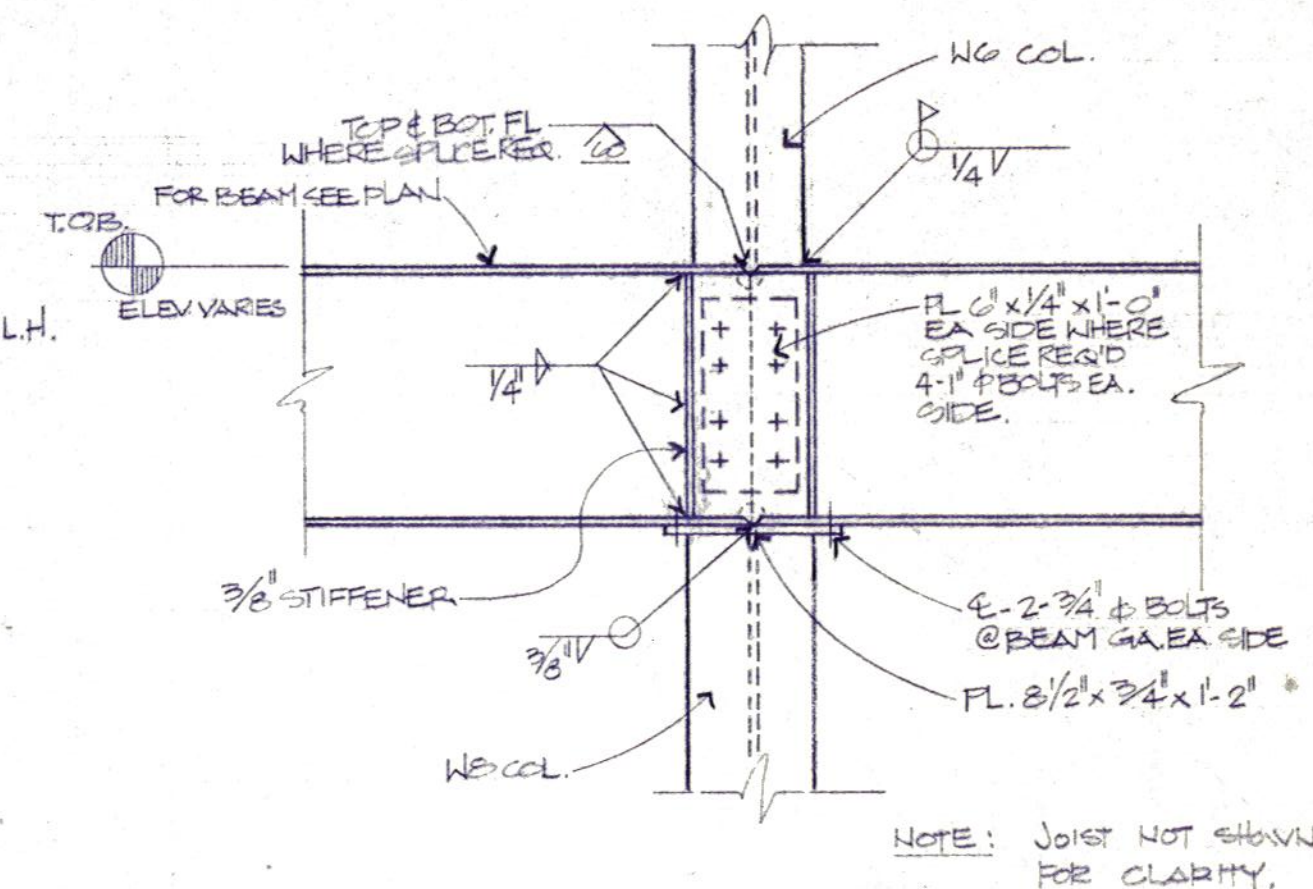
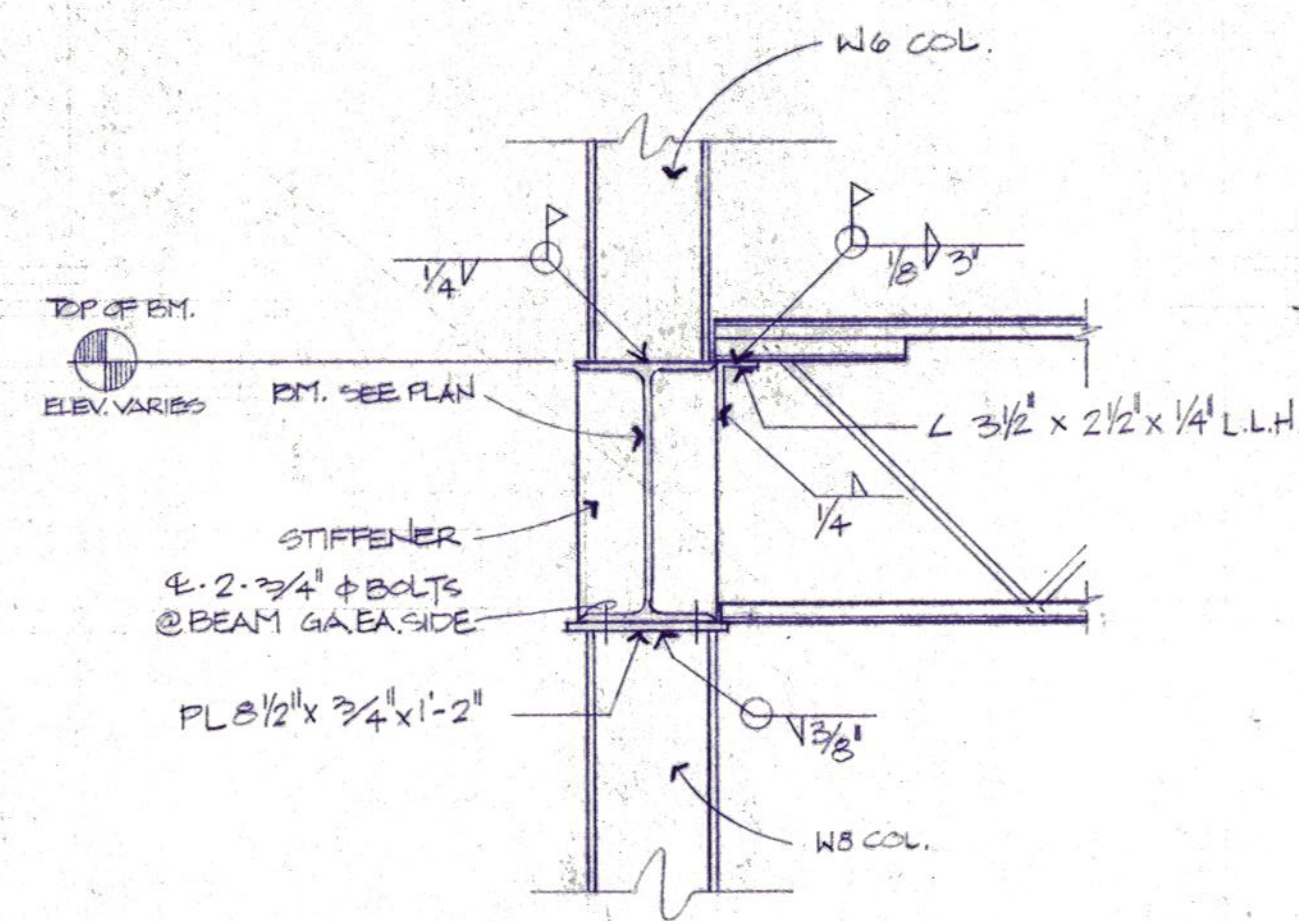
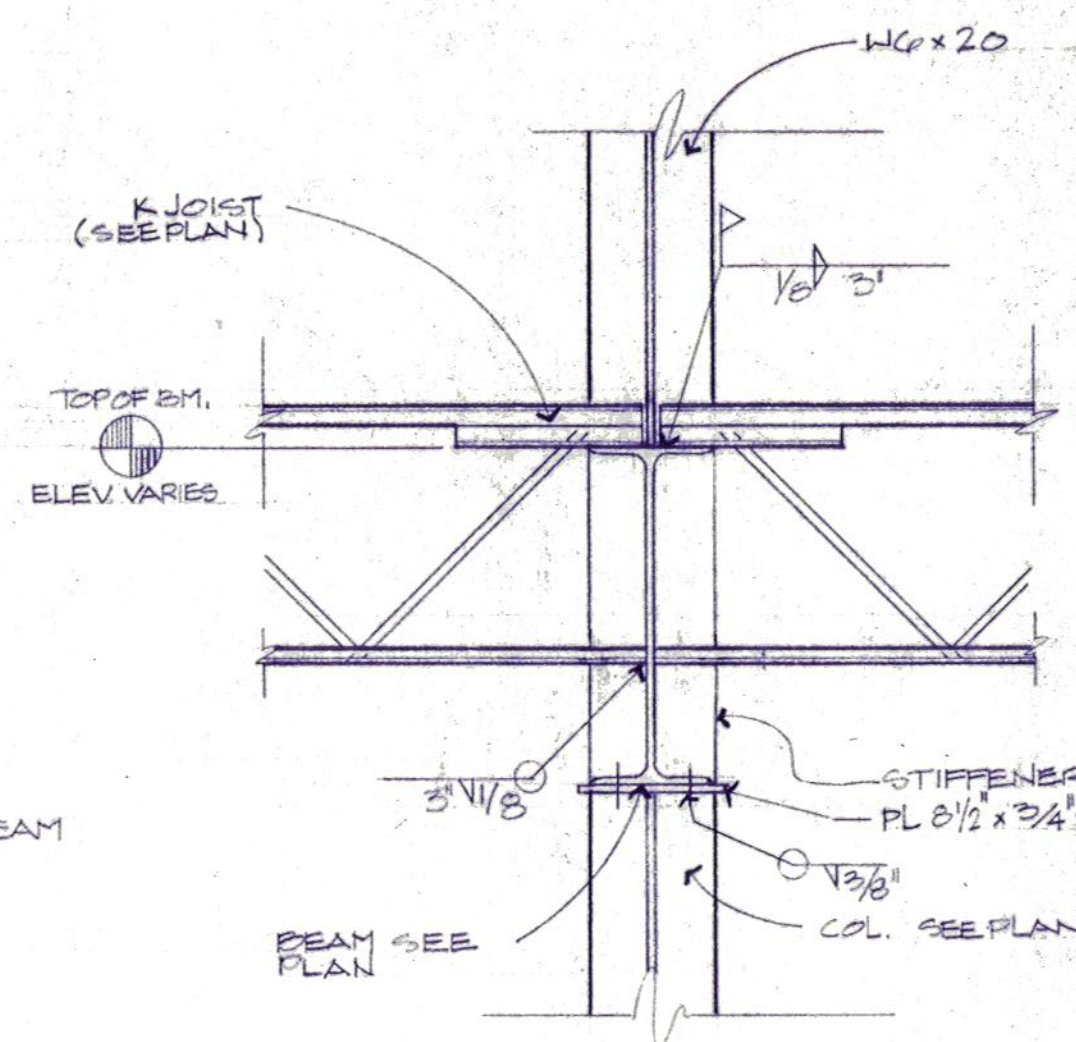
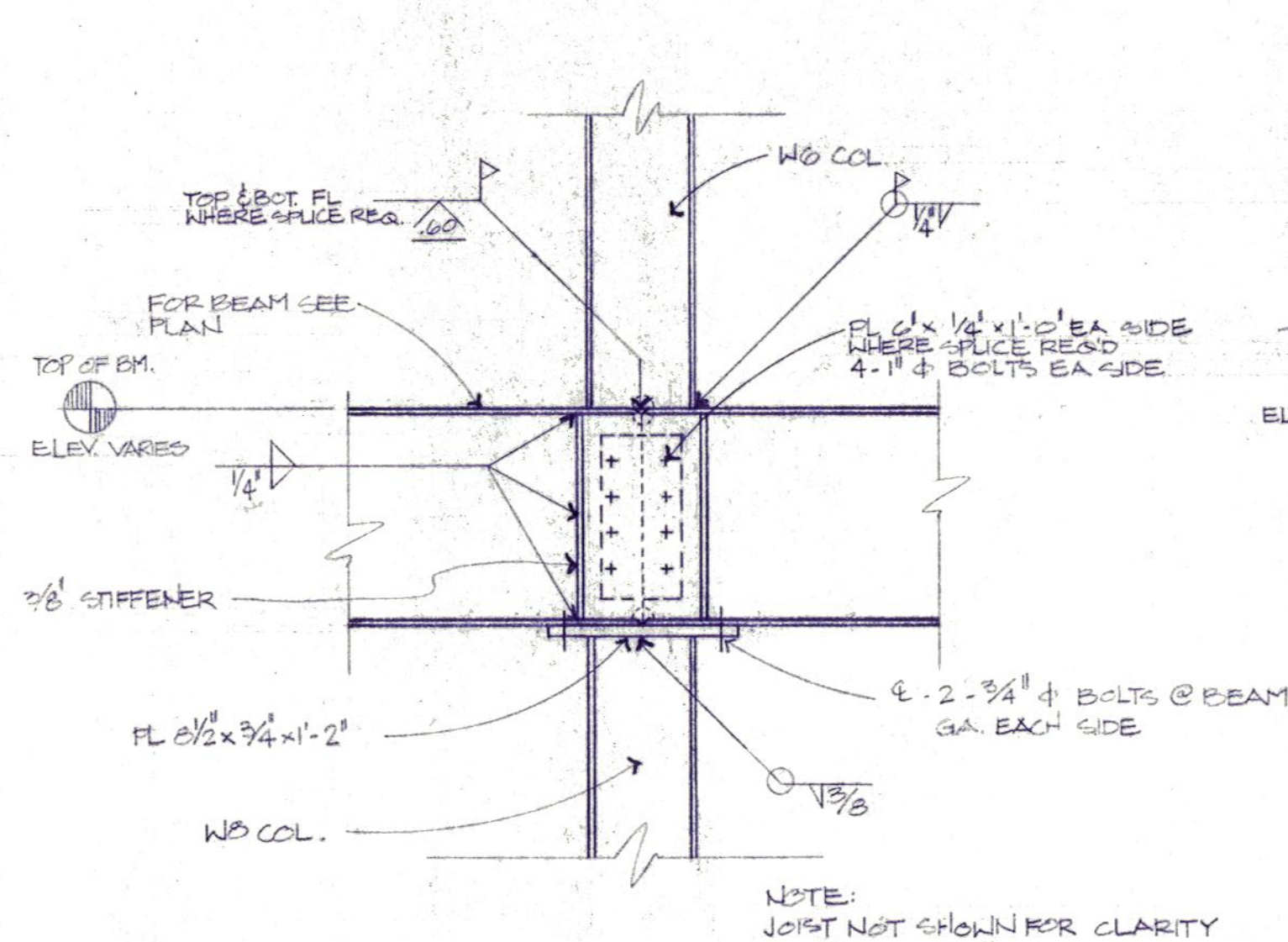


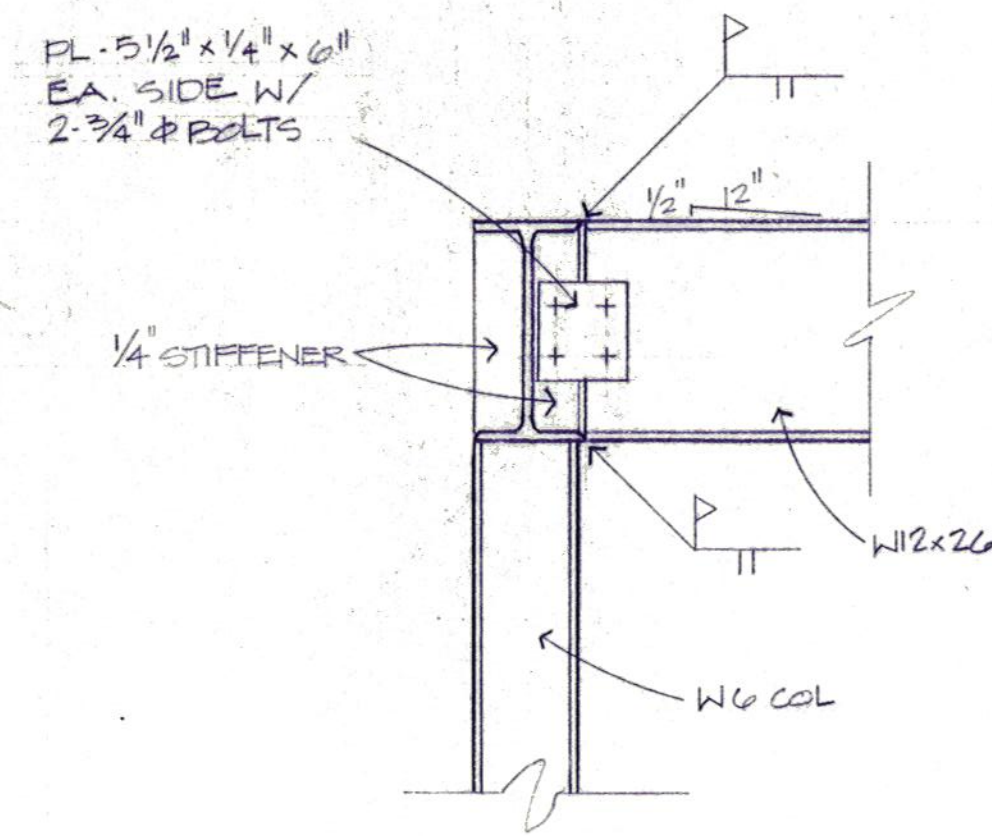
Daugherty & Glover, Inc.
ARCHITECTS & ENGINEERS
2825 PLAZA PARKWAY, SUITE 14
MOUNTAIN FALLS, TEXAS 78308
(817) 661-3013

A New Maintenance Facility
DANIEL BUILDING
Midwestern State University
Wichita Falls, Texas

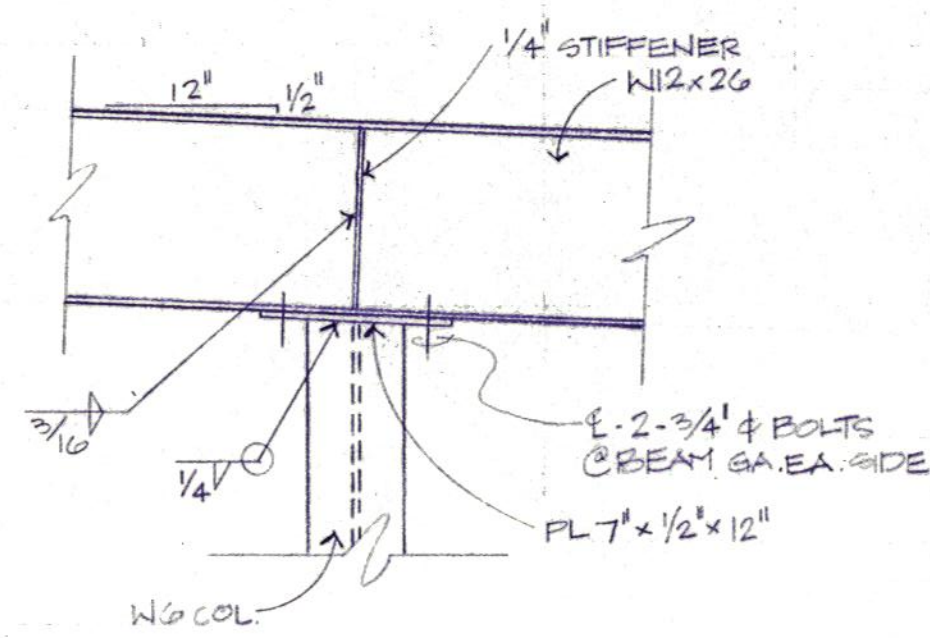
DD
SS
MM

DRAWN L PARKS
CHECKED GLOVER
DATE JULY 11, 1989
JOB NUMBER 8907
SHEET
S5
OF 7 VOLUME I

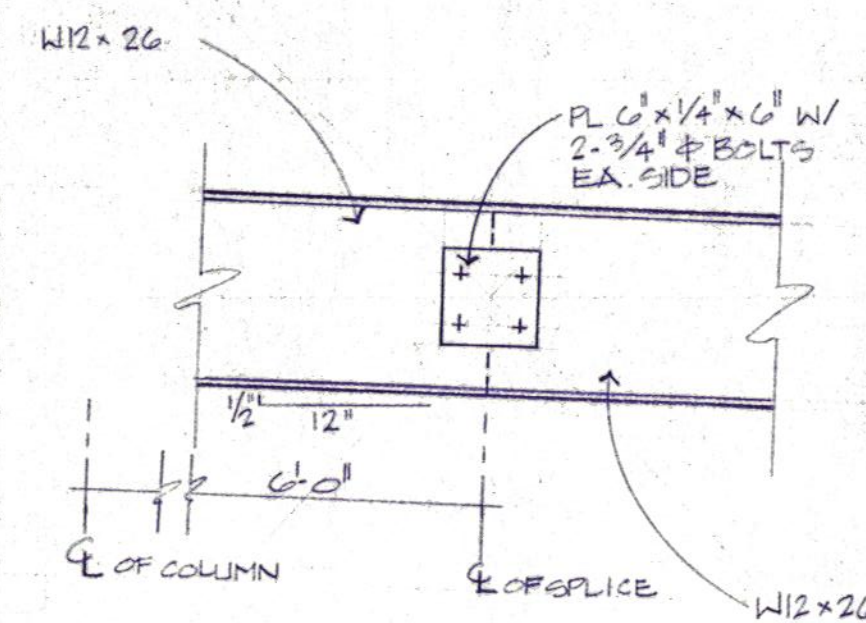




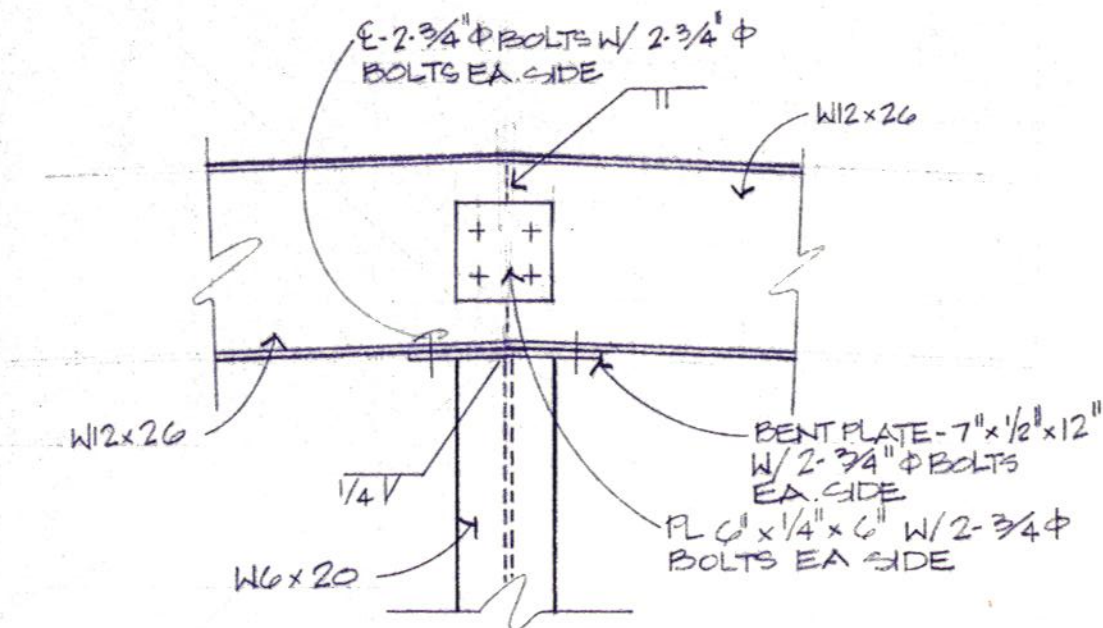
1 DETAIL



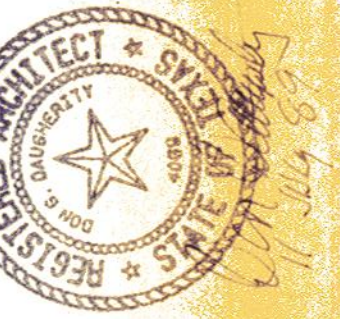
2 DETAIL



3 DETAIL



4 DETAIL



**Daugherty
& Glover, Inc.**
ARCHITECTS & ENGINEERS
1800 S. W. 10TH AVE., SUITE 401
FORT WORTH, TEXAS 76104

A New Maintenance Facility
DANIEL BUILDING
Midwestern State University
Wichita Falls, Texas

**DD
SS
MM**

DRAWN GOMEZ

CHECKED GLOVER

DATE JULY 11, 1989

JOB NUMBER

SHEET

S7

OF 7 VOLUME I