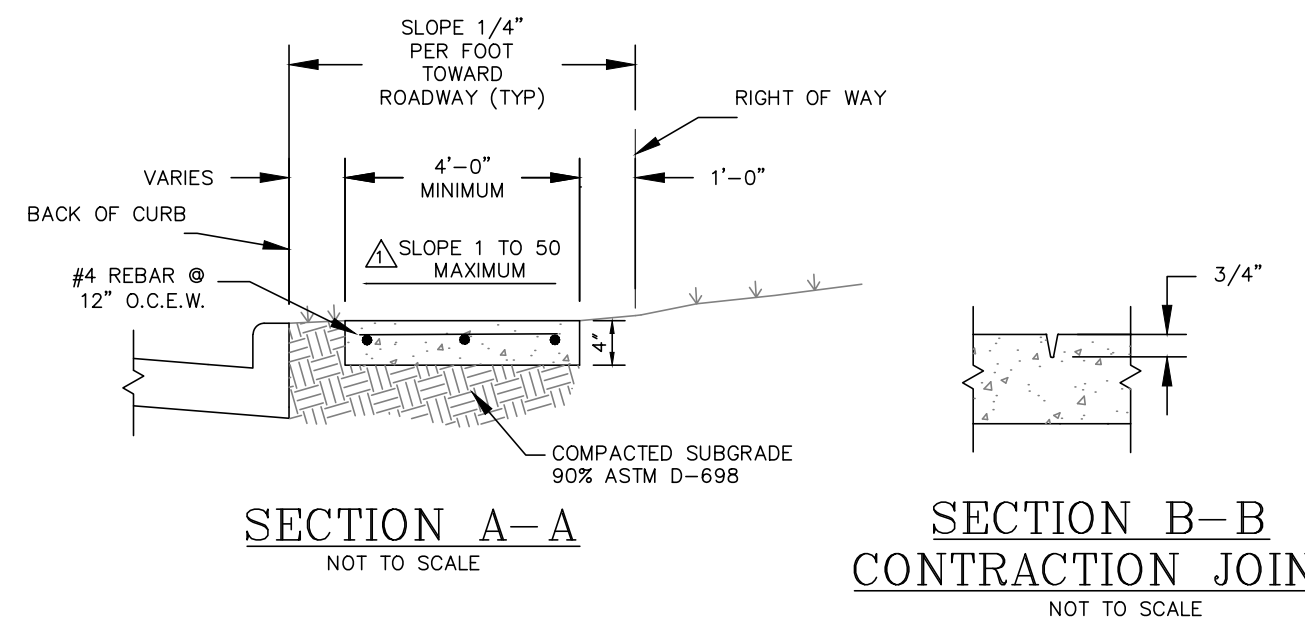
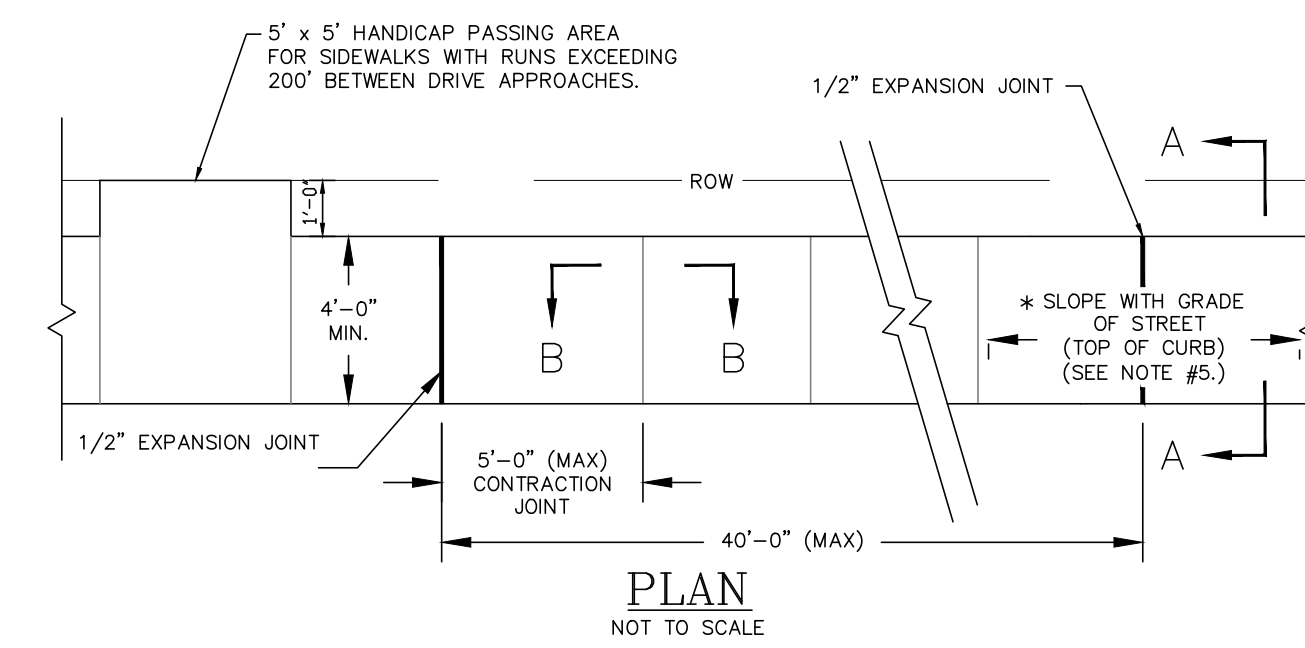


# STANDARD "MIDWESTERN STATE UNIVERSITY" SIDEWALK AND STREET CURB CONSTRUCTION DETAILS

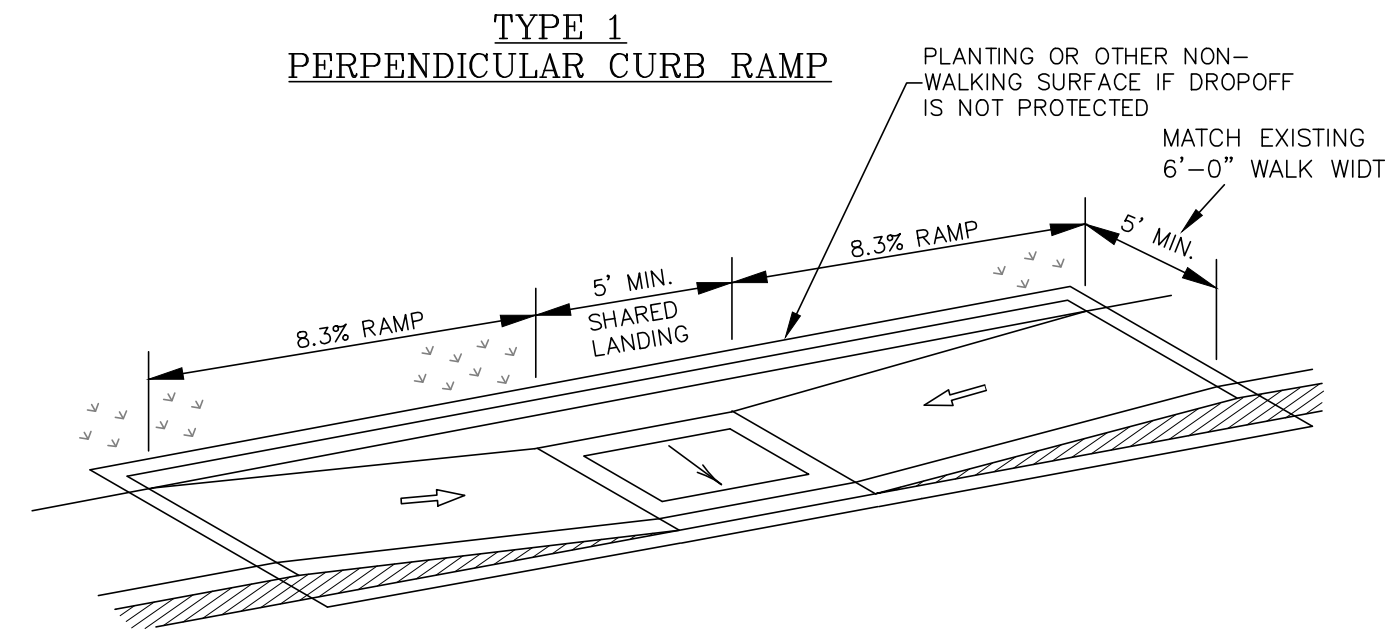
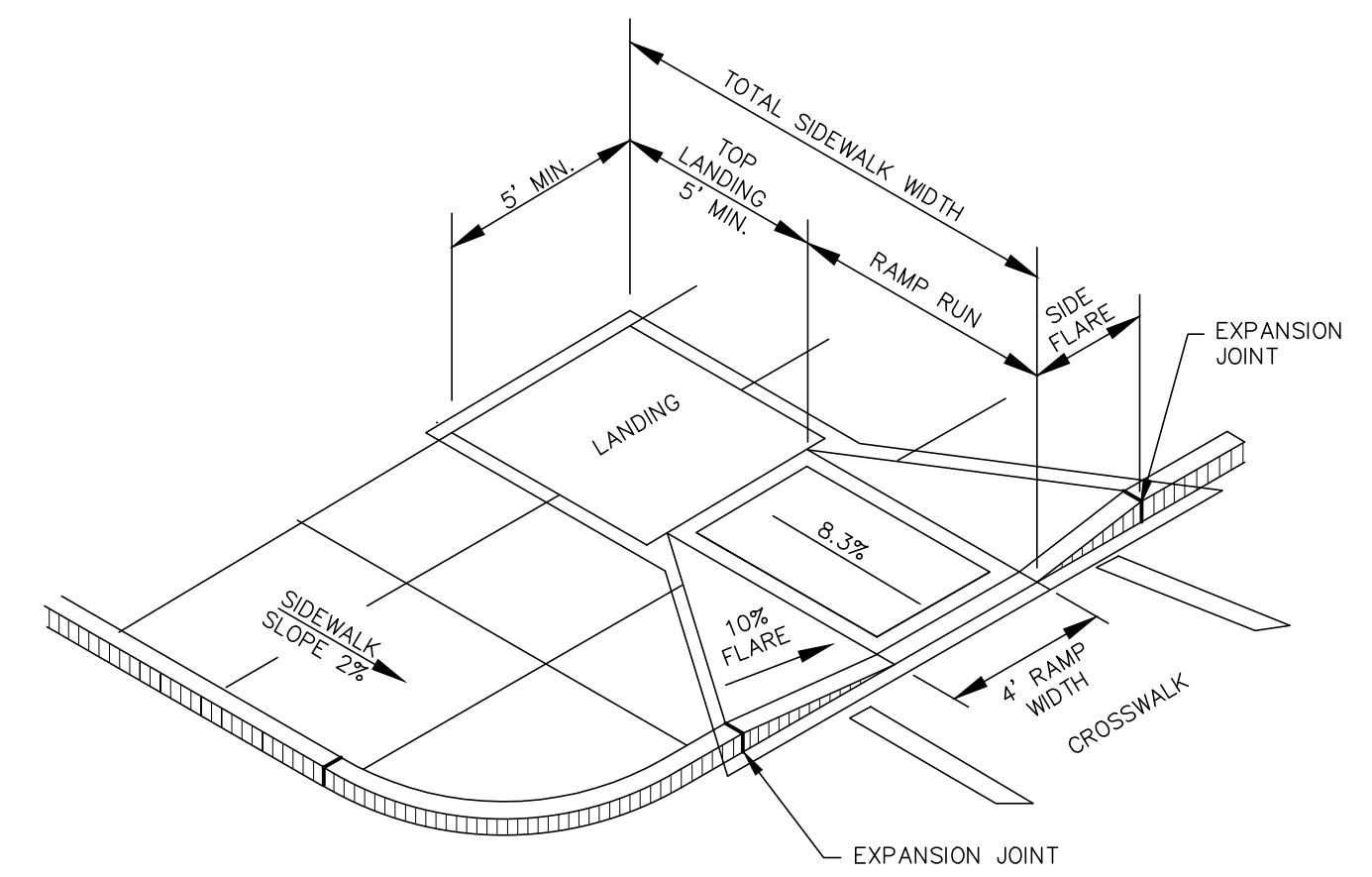
## SIDEWALK, RAMP AND CURB GENERAL NOTES:

1. ALL SLOPES ARE MAXIMUM ALLOWABLE. THE LEAST POSSIBLE SLOPE THAT WILL STILL DRAIN PROPERLY SHOULD BE USED. RAMP LENGTH OR GRADE OF APPROACH SIDEWALKS MAY BE ADJUSTED AS DIRECTED BY THE ENGINEER.
2. EXCEPT AS NOTED ON THE PLANS, THE MINIMUM SIDEWALK WIDTH IS 4'. WHERE A 4' SIDEWALK CAN NOT BE PROVIDED DUE TO SITE CONSTRAINTS, A MINIMUM 3' SIDEWALK WITH 5' X 5' PASSING AREAS AT INTERVALS NOT TO EXCEED 200 FT IS REQUIRED.
3. LANDINGS SHALL BE 5' X 5' MINIMUM WITH A MAXIMUM 2% SLOPE IN ANY DIRECTION.
4. MANEUVERING SPACE AT THE BOTTOM OF CURB RAMPS SHALL BE A MINIMUM OF 4' X 4' WHOLLY CONTAINED WITHIN THE CROSSWALK AND WHOLLY OUTSIDE THE PARALLEL VEHICULAR TRAVEL PATH.
5. MAXIMUM ALLOWABLE CROSS SLOPE ON SIDEWALK AND RAMP SURFACES IS 2%.
6. CURB RAMPS WITH RETURNED CURBS MAY BE USED ONLY WHERE PEDESTRIANS WOULD NOT NORMALLY WALK ACROSS THE RAMP. OTHERWISE, FLARED SIDES SHALL BE PROVIDED.
7. ALL CONCRETE SURFACES SHALL RECEIVE A LIGHT BROOM FINISH UNLESS NOTED OTHERWISE IN THE PLANS.
8. RAMP TEXTURES MUST CONSIST OF TRUNCATED DOMED SURFACES. TEXTURES ARE REQUIRED TO BE DETECTABLE UNDERFOOT. SURFACES THAT WOULD ALLOW WATER TO ACCUMULATE ARE PROHIBITED.
9. ADDITIONAL INFORMATION ON CURB RAMP LOCATION, DESIGN, LIGHT REFLECTIVE VALUE AND TEXTURE MAY BE FOUND IN THE CURRENT EDITION OF THE TEXAS ACCESSIBILITY STANDARDS (TAS) PREPARED AND ADMINISTERED BY THE TEXAS DEPARTMENT OF LICENSING AND REGULATION (TDLR).
10. CROSSWALK DIMENSIONS, CROSSWALK MARKINGS AND STOP BAR LOCATIONS SHALL BE AS SHOWN ELSEWHERE IN THE PLANS. AT INTERSECTIONS WHERE CROSSWALK MARKINGS ARE NOT REQUIRED, RAMPS SHALL BE ALIGNED WITH THEORETICAL CROSSWALKS, OR AS DIRECTED BY THE ENGINEER.
11. EXISTING FEATURES THAT COMPLY WITH TAS MAY REMAIN IN PLACE UNLESS OTHERWISE SHOWN ON THE PLANS.
12. HANDRAILS ARE NOT REQUIRED ON CURB RAMPS. CURB RAMPS SHALL BE PROVIDED WHEREVER ON ACCESSIBLE ROUTE CROSSES (PENETRATES) A CURB.
13. SHADED AREAS INDICATE LOCATIONS OF DETECTABLE WARNINGS. (COLOR / LIGHT REFLECTIVE VALUE AND TEXTURE CONTRAST)



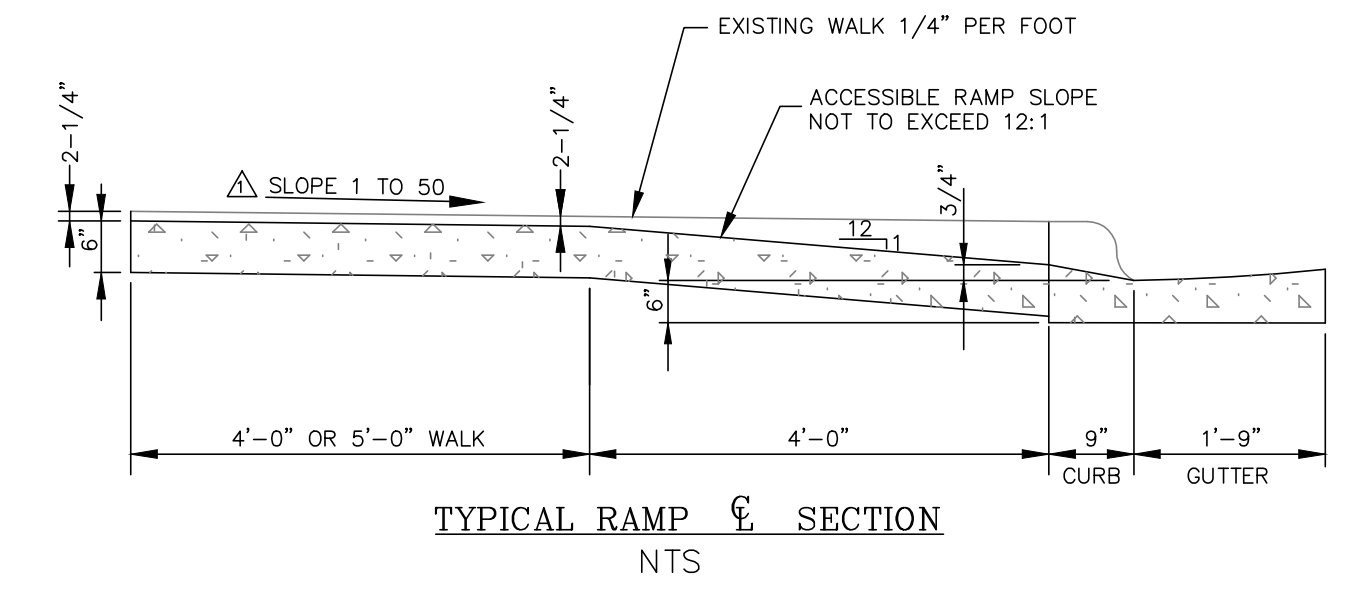
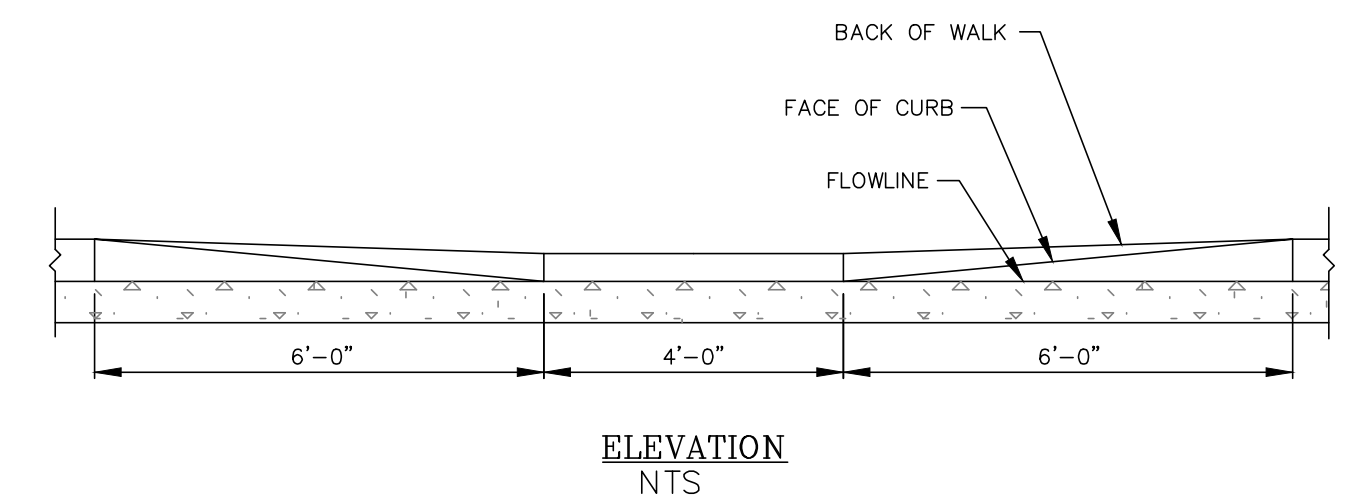
- GENERAL NOTES:**
1. SIDEWALK REINFORCING (EXCLUDING DRIVE APPROACHES) SHALL BE #3 BARS @ 12" O.C.E.W.
  2. ALL CONCRETE SHALL BE CLASS A, 5 SACK.
  3. SAND SHALL NOT BE ACCEPTED AS COMPACTED SUBGRADE. SAND WILL BE ALLOWED FOR LEVEL-UP ONLY.
  4. ANY UTILITY BOXES OR MANHOLES WITHIN THE SIDEWALK OR APPROACH MUST BE ADJUSTED BY THE CITY UTILITY DEPARTMENT TO THE GRADE SHOWN. ALL ADJUSTMENT COST WILL BE THE RESPONSIBILITY OF THE CONTRACTOR, OR AS DIRECTED BY THE ENGINEER.
  5. SLOPE AT DRIVE APPROACHES AND APPROACHING RAMPS MUST COMPLY WITH ADA REQUIREMENTS. (1 INCH PER FOOT MAXIMUM)
  6. AT REPLACED WALKS, MATCH EXISTING WALK WIDTHS WHICH ARE A NOMINAL 6'-0" WIDTH IN THIS AREA.

**SIDEWALK STANDARD DETAIL** 1  
SCALE: NTS 4

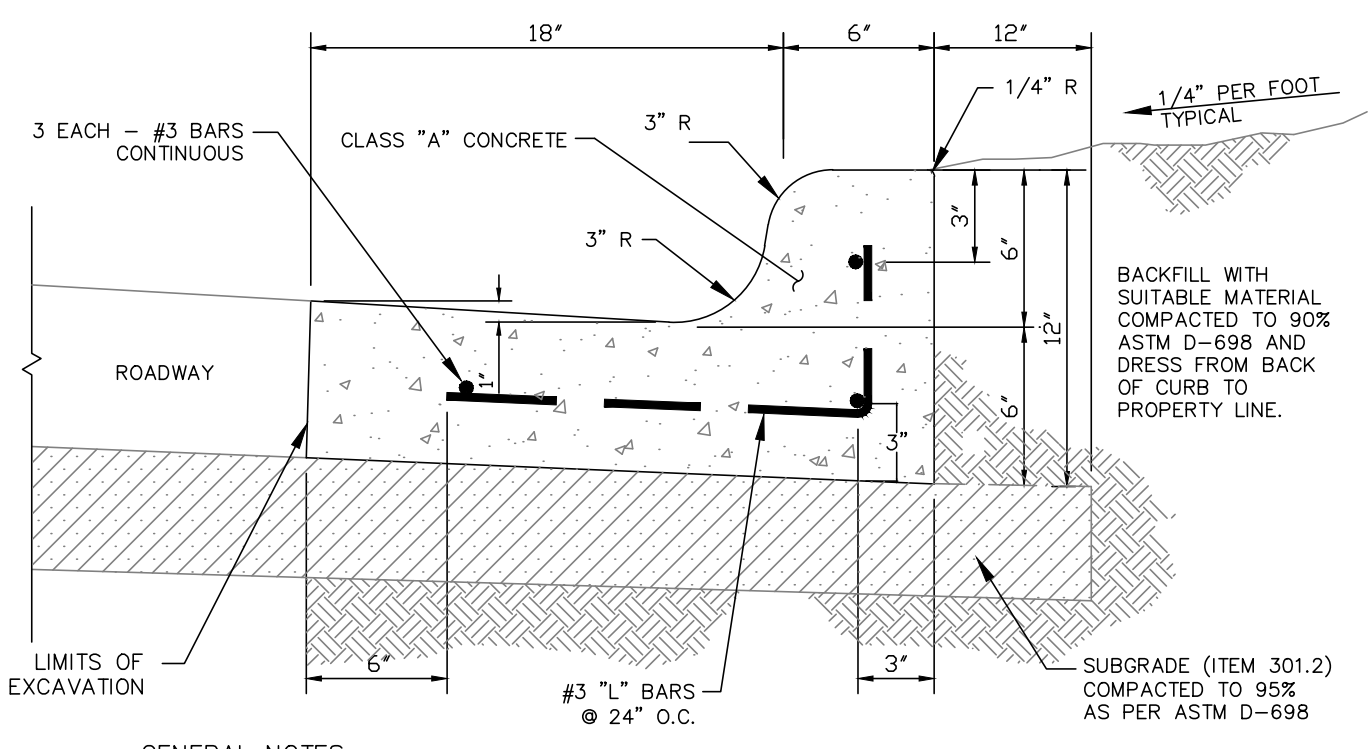


NOTE:  
AT EXISTING RAMP REPLACEMENTS, MATCH EXISTING CONCRETE TEXTURES AND COLORS.

**TYP. SIDEWALK RAMP DETAILS** 2  
SCALE: NTS 4

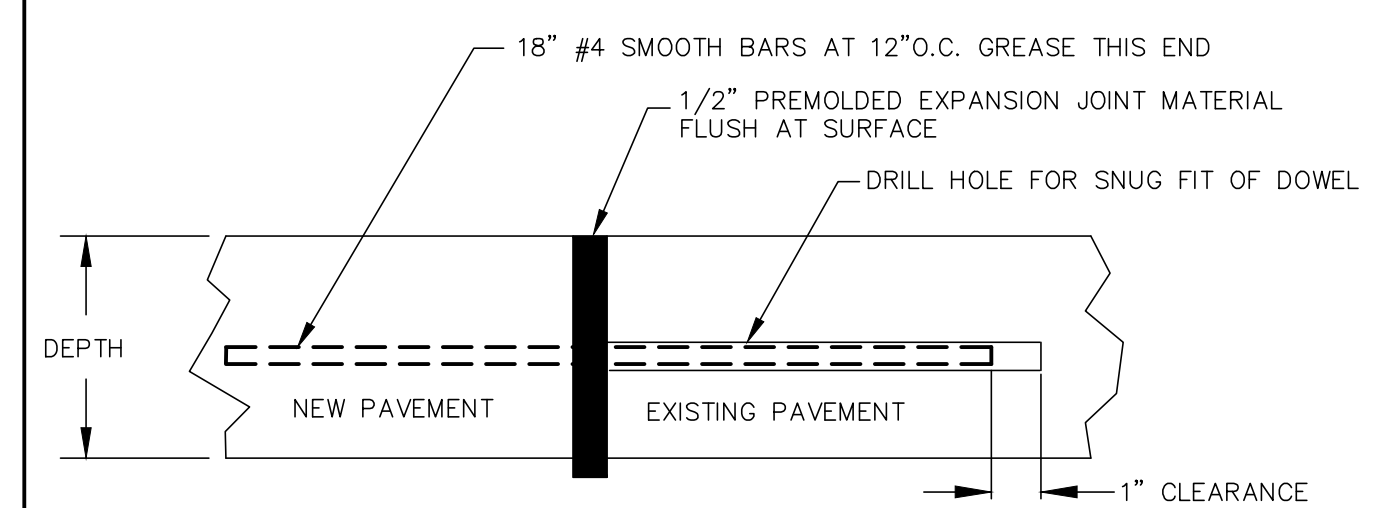


**RAMP @ CURB ELEV. & SECTION** 3  
SCALE: NTS 4



- GENERAL NOTES:**
1. DOWEL REINFORCEMENT 6" INTO EXISTING CURB AND GUTTER.
  2. CONSTRUCT 1/2" EXPANSION JOINTS AT 60' ON CENTER AND CONTRACTION JOINTS AT 15' ON CENTER.
  3. SEE ITEM 305.1 OF THE STANDARD SPECIFICATIONS.
  4. ALL CONCRETE SHALL BE CLASS A, 5 SACK.
  5. SAND SHALL NOT BE ACCEPTED AS COMPACTED SUBGRADE. SAND WILL BE ALLOWED FOR LEVEL-UP ONLY. (2" MAX.).

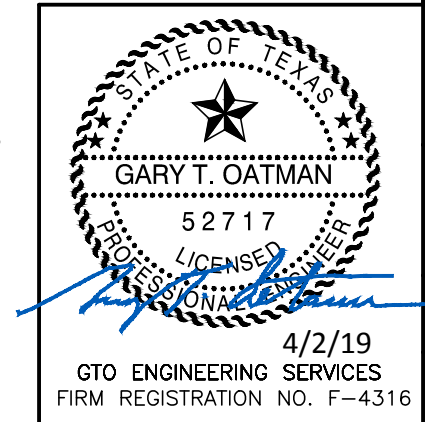
**CURB AND GUTTER DETAIL** 4  
SCALE: NTS 4



**SIDEWALK TIE-IN JOINT** 5  
SCALE: NTS 4

The seal appearing on this document was authorized by Gary T. Oatman, P.E. - Registration 52717 on April 2, 2019. Alteration of a sealed document without proper notification to the responsible engineer is an offense under the Texas Engineering Practice Act.

This authorization is for Revision 0 only.



LETTER	DATE	DESCRIPTION	REV BY	CHK BY
SUPERSEDES				
<b>GTO ENGINEERING SERVICES</b>				
2406 KELL BLVD. * WICHITA FALLS * TEXAS				
<b>MIDWESTERN STATE UNIVERSITY</b>				
TAFT BLVD., WICHITA FALLS, TEXAS				
<b>UTILITY TUNNEL REPAIR PLANS</b>				
<b>TUNNEL A - 750 FT MARK</b>				
DRAWN BY	DATE	DRAWING NUMBER	REVISION	SHEET NO.
GTO	4/2/19	199019	0	S4
CHECKED BY	SCALE			
GTO	NOTED			