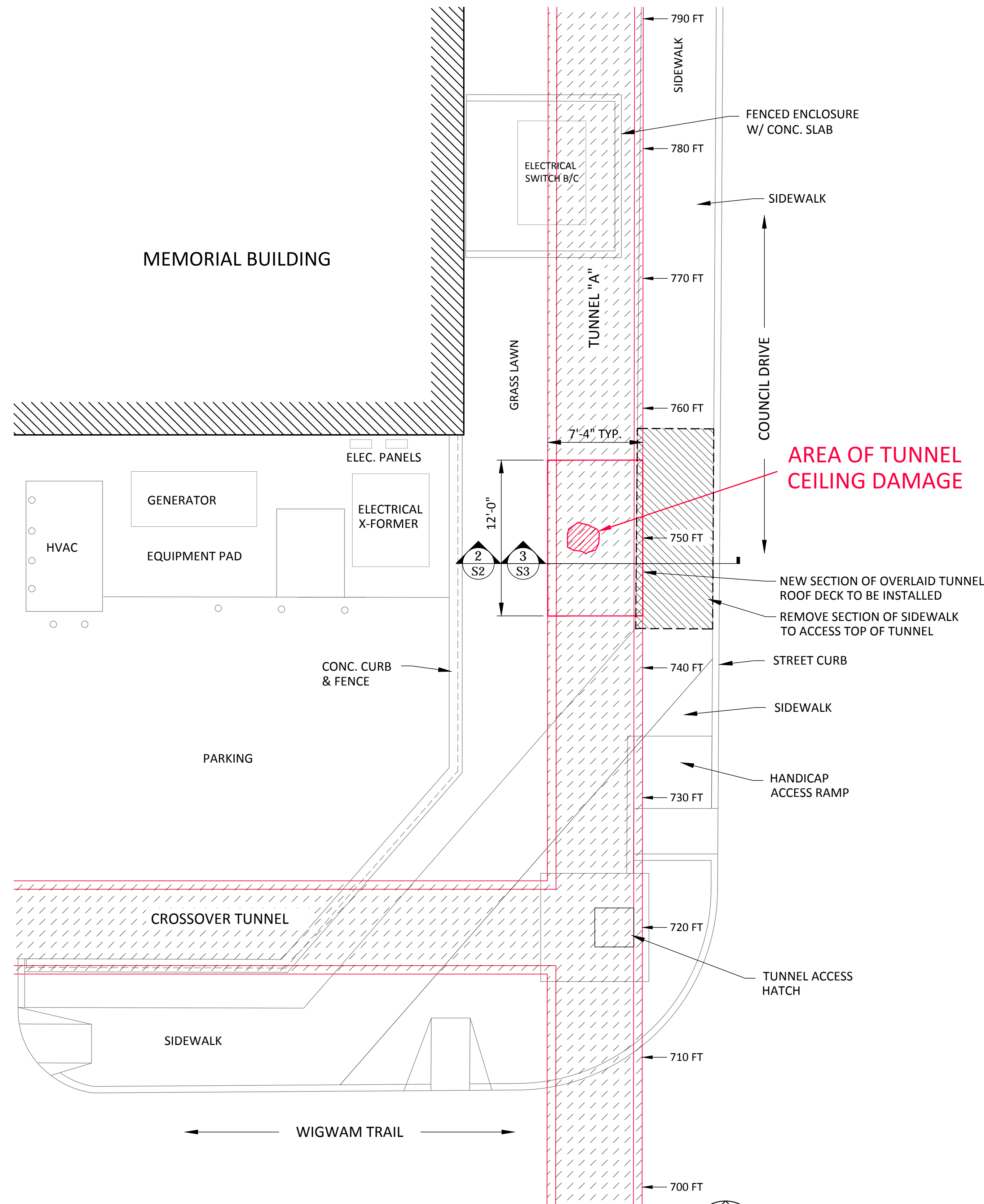


PROJECT NOTES:

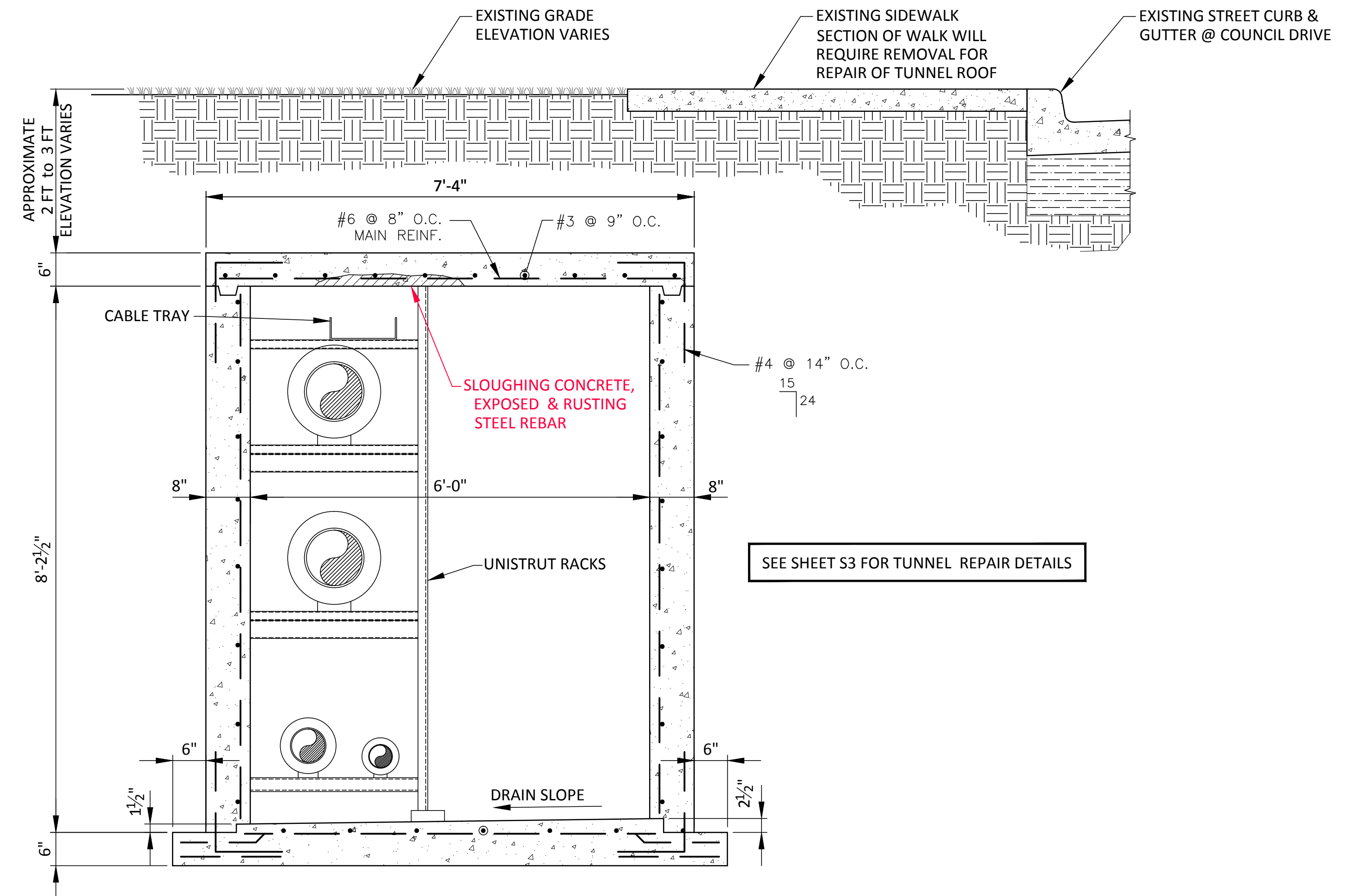
- FOR GENERAL PROJECT NOTES PLEASE REFER TO SHEET NO. S1



ENLARGED SITE PLAN OF TUNNEL LOCATION

SCALE: 3/16" = 1'-0"

1  
S1



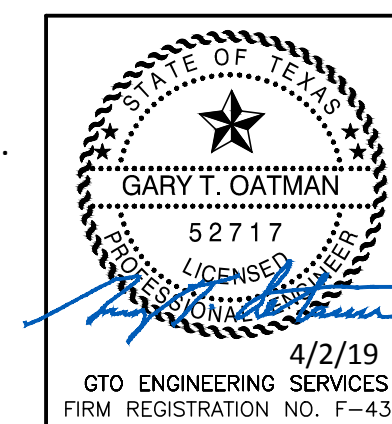
TUNNEL SECTION at DISTRESSED LOCATION

SCALE: 3/4" = 1'-0"

2  
S2

The seal appearing on this document was authorized by Gary T. Oatman, P.E. - Registration 52717 on April 2, 2019. Alteration of a sealed document without proper notification to the responsible engineer is an offense under the Texas Engineering Practice Act.

This authorization is for Revision 0 only.



LETTER	DATE	DESCRIPTION	REV. BY	CHK. BY
SUPERSEDES				
<b>GTO ENGINEERING SERVICES</b>				
2406 KELL BLVD. * WICHITA FALLS * TEXAS				
<b>MIDWESTERN STATE UNIVERSITY</b>				
TAFT BLVD., WICHITA FALLS, TEXAS				
<b>UTILITY TUNNEL REPAIR PLANS</b>				
<b>TUNNEL A - 750 FT MARK</b>				
DRAWN BY	DATE	DRAWING NUMBER	REVISION	SHEET NO.
GTO	4/2/19	199019	0	S2
CHECKED BY	SCALE			
GTO	NOTED			