



Midmark Corporation
60 Vista Dr.
Versailles, Ohio 45380-0286

www.midmark.com
drawings-casework@midmark.com
Phone: 1-800-MIDMARK

Casework Drawings

Project Name: MSU Lab

Project #: DS182113

Phase #: 01

Rev: A

Date: 8/27/2018

Midmark Rep: Josh Veltri
jveltri@midmark.com

Designer: Jennifer Litten Ext: 128739
jlitten@midmark.com

These drawings are the sole property of Midmark Corporation and are to be used for illustration only. Actual product appearance may vary.



www.midmark.com
drawings-casework@midmark.com
Phone: 1-800-MIDMARK

Project Name: **MSU Lab**

Project #: DS182113

Phase #: 01

Rev: A

Signed Drawings Required To Process Order

Color Schedule

(Signature)

(Date)

See Cover Page For Terms and Conditions

Panel Finishes

Panel Styles: Serenity

Handle Types: TBD

Handle Finishes: Brushed Nickel

Finish Colors:



Fawn

Countertop Materials

Top Materials: Solid Surface

Top Colors:



Cottage Lane



www.midmark.com
drawings-casework@midmark.com
Phone: 1-800-MIDMARK

Project Name: **MSU Lab**

Project #: DS182113

Phase #: 01

Rev: A

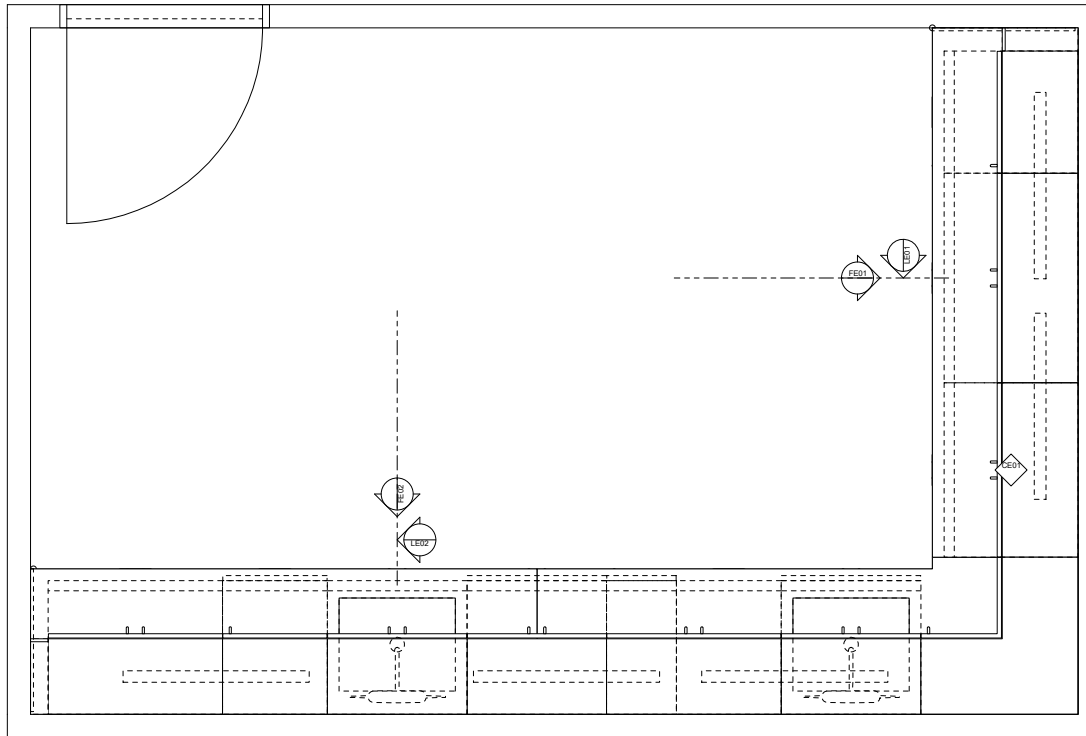
**Signed Drawings Required To
Process Order**

(Signature)

(Date)

See Cover Page For Terms and Conditions

Room Plan View





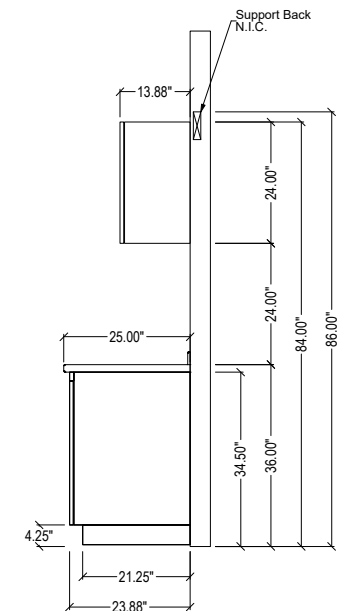
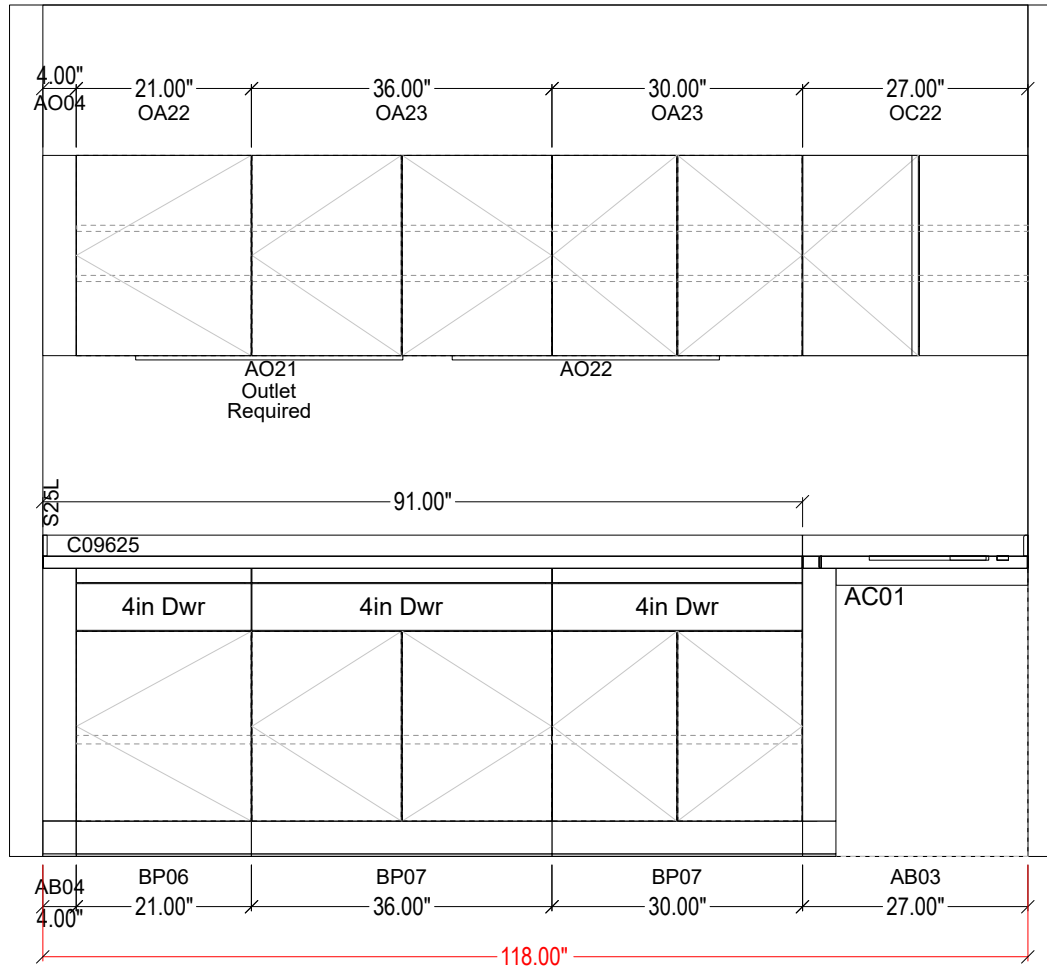
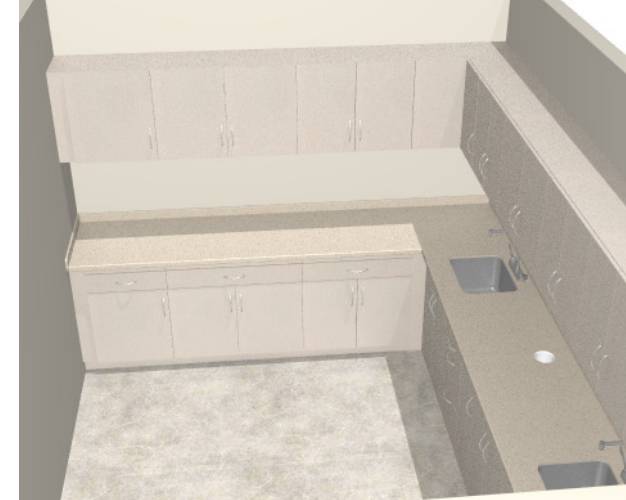
www.midmark.com
 drawings-casework@midmark.com
 Phone: 1-800-MIDMARK

Project Name:	MSU Lab	Project #:	DS182113	Phase #:	01	Rev:	A
Base Finish:	490-Fawn	Tasklight:	Included	Top Material:	Solid Surface		
Upper Finish:	490-Fawn	Grommet:	None	Top Color:	Cottage Lane		
Panel Style:	Serenity Panel	Cutout:	None	Note:			
Handle:	Brushed Nickel TBD	Note:		Sink:	None		
Lock:	No Lock	Note:	Field Measurement Required	Faucet:	None		

Signed Drawings Required To Process Order

 (Signature) (Date)

See Cover Page For Terms and Conditions





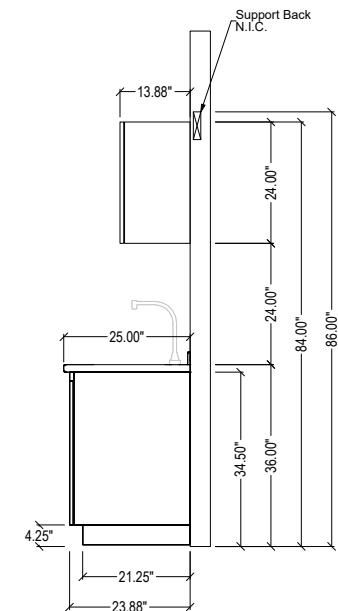
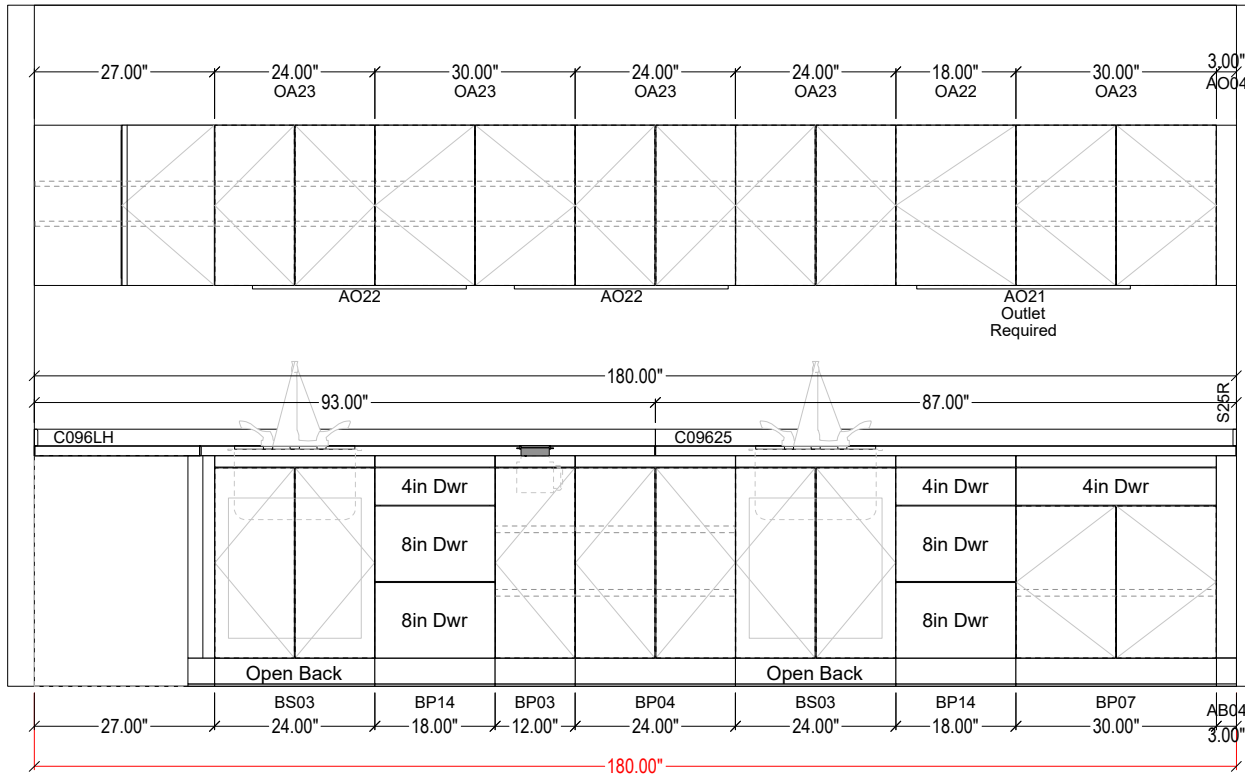
www.midmark.com
 drawings-casework@midmark.com
 Phone: 1-800-MIDMARK

Project Name: MSU Lab	Project #: DS182113	Phase #: 01	Rev: A
Base Finish: 490-Fawn	Tasklight: Included	Top Material: Solid Surface	
Upper Finish: 490-Fawn	Grommet: AC22.0406	Top Color: Cottage Lane	
Panel Style: Serenity Panel	Cutout: None	Note:	
Handle: Brushed Nickel TBD	Note:	Sink: USX-1620-A, USX-1620-A	
Lock: No Lock	Note: Field Measurement Required	Faucet: CFT-9HR4WB-3, CFT-9HR4WB-3	

Signed Drawings Required To Process Order

 (Signature) (Date)

See Cover Page For Terms and Conditions





Countertop Detail Sheet

Solid Surface Detail F
Set-on Backsplash 0.5" x 2.5"

Design Considerations:

- * 19", 25, & 31" tops available.
- * Solid surface tops that exceed 144" or form an "L" shape will be sent as multiple pieces and require field seaming by a licensed solid surface installer.
- * Integrated sinks and chutes will be attached.
- * Midmark will only provide the sink and faucet cut outs if sink and faucet are purchased from Midmark.
- * Solid surface tops will be manufactured based on the field measurements provided at the time of order.
- * Contingent on design, side splash depth next to tall towers and drop down ultra sonic areas will be shorter than top.
- * Standard countertop overhang for base cabinets is 1/2".
- * Dental undermount sinks will be attached.

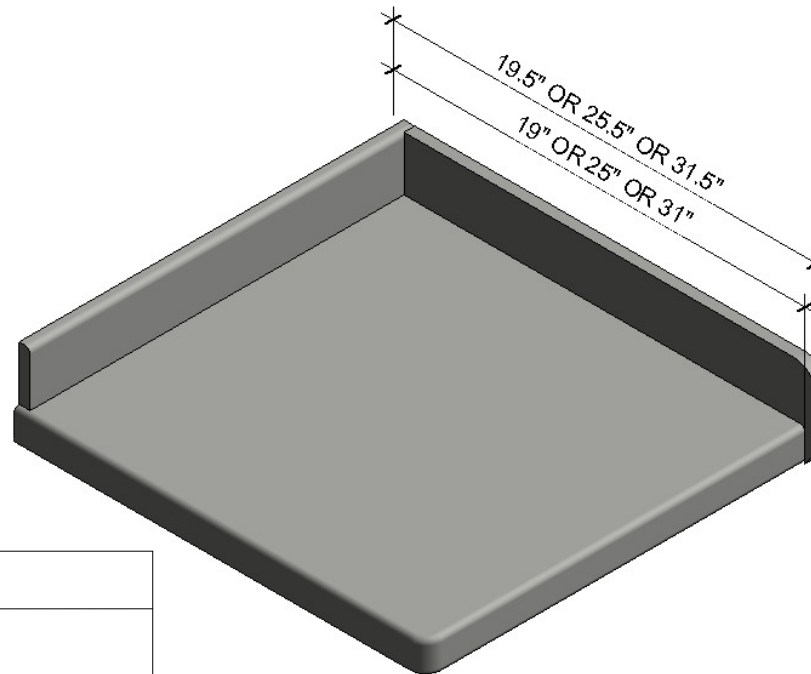
Material: 1/2" thick solid surface, 1-1/2" thick top with 1" thick by 2-1/2" tall set on backsplash, total height 4".

Brands: DuPont Corian

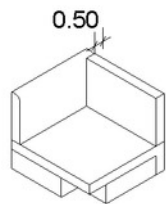
Colors: See color guide for standard color options; for non standard color options please call to confirm availability and extended leaded time.

Features & Benefits:

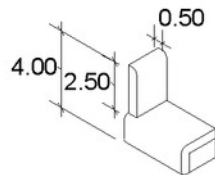
- * 3/8" radius front edge profile.
- * Outside corners of solid surface tops will have a 3/4" radius.
- * Loose set on side splash available, contoured to fit profile, 1/2" thick with waterfall front.
- * Integrated solid surface sink for Medical or Animal Health will be Cameo White; Dental sinks will be Glacier White.
- * 1" thick set on backsplash.



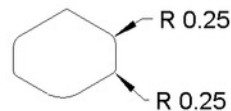
Detail Drawings with Exact Dimensions



Sidesplash Detail



Backsplash Detail



Front Edge Detail



Grommet Detail Sheet

Laminate countertop: Grommet is a separate part; it will be a line item in the pricing.

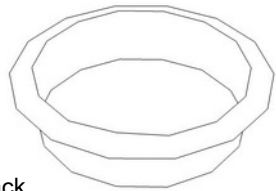
Corian countertop:

- Part of the countertop = Yes, grommet is part of the countertop; it will not have a line item in the pricing.

- Part of the countertop = No, grommet is a separate part; it will be a line item in the pricing.

Waste Grommet

AC20.0601



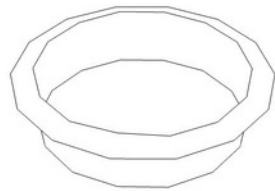
Color: Black

Size: 6in opening

Part of a Corian countertop: No

Includes Trash Can

AC23.0401

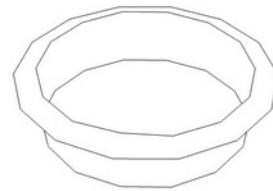


Color: Black

Size: 4in opening

Part of a Corian countertop: No

AC23.0601

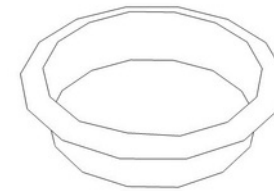


Color: Black

Size: 6in opening

Part of a Corian countertop: No

AC28.0602



Color: Stainless Steel

Size: 5.375in opening

Part of a Corian countertop: No

Waste Chute

AC21.0406



Color: White

Size: 4in opening

Part of a Corian countertop: Yes

AC21.0606



Color: White

Size: 6in opening

Part of a Corian countertop: Yes

AC22.0406



Color: White

Size: 4in opening

Part of a Corian countertop: Yes

AC22.0606



Color: White

Size: 6in opening

Part of a Corian countertop: Yes

AC29.0406



Color: White

Size: 4in opening

Part of a Corian countertop: Yes

Wire Grommet

AC24.0201

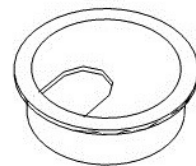


Color: Putty

Size: 1.625in opening

Part of a Corian countertop: No

AC25.0101

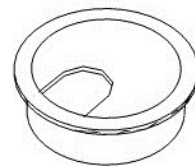


Color: Black

Size: .5625in opening

Part of a Corian countertop: No

AC26.0101

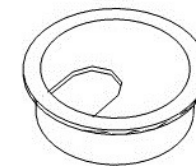


Color: Putty

Size: .5625in opening

Part of a Corian countertop: No

AC27.0201



Color: Black

Size: 1.625in opening

Part of a Corian countertop: No



www.midmark.com
drawings-casework@midmark.com
Phone: 1-800-MIDMARK

Project Name: **MSU Lab**

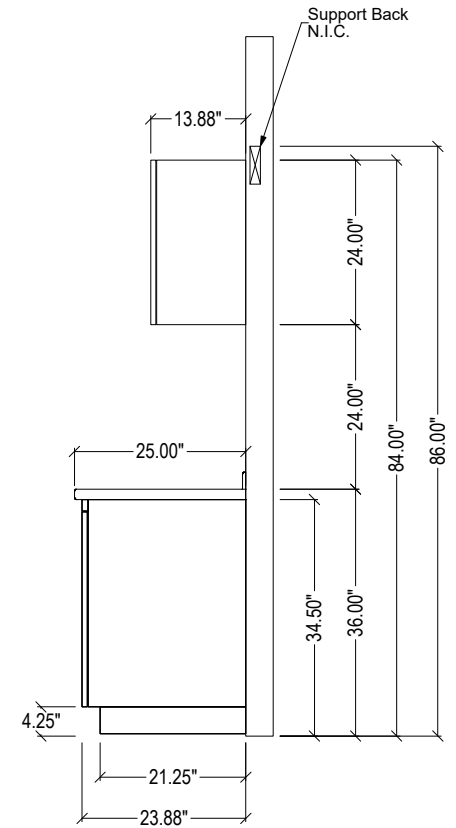
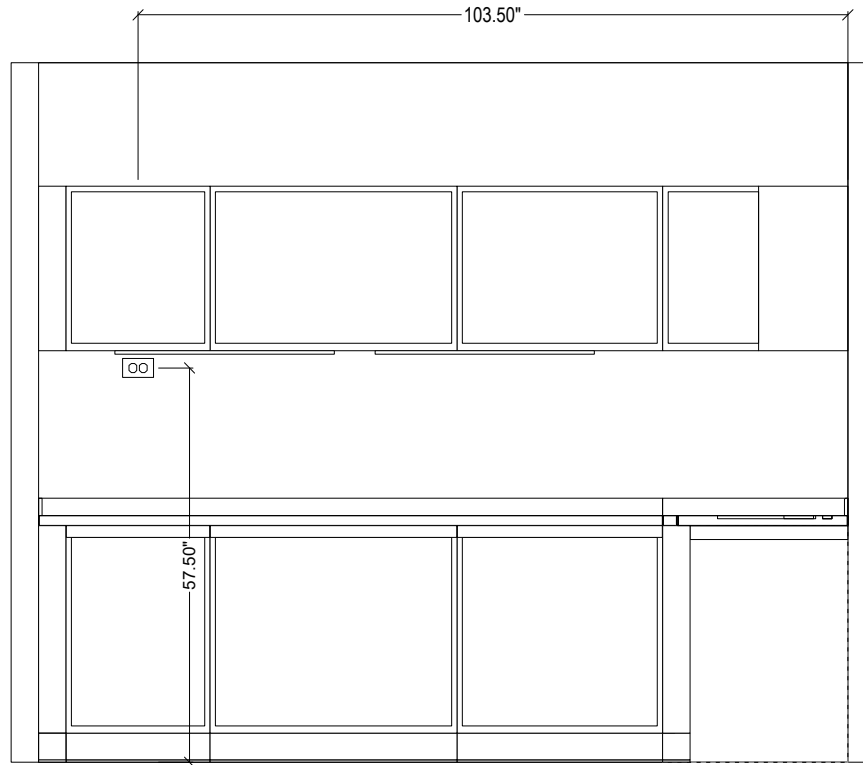
Drawing #: DS182113

Rev: A

Plumbing and Electrical Specs.

Note: All local, state, and federal electrical & plumbing codes are to be followed when installing.

This drawing is the sole property of Midmark Corporation and is to be used for illustration only. Actual product appearance may vary.





www.midmark.com
drawings-casework@midmark.com
Phone: 1-800-MIDMARK

Project Name: **MSU Lab**

Drawing #: DS182113

Rev: A

Plumbing and Electrical Specs.

Note: All local, state, and federal electrical & plumbing codes are to be followed when installing.

This drawing is the sole property of Midmark Corporation and is to be used for illustration only. Actual product appearance may vary.

