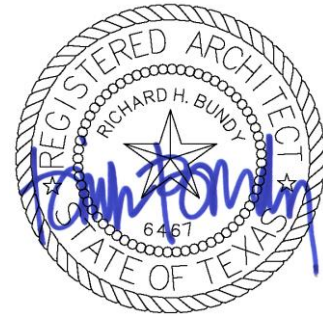


**A Renovation of Sunwatcher Village clubhouse for:
Midwestern State University
Wichita Falls, Texas**



BYSP PROJECT NO. 17032

November 7, 2017

TO: All Contract Bidders of Record

The following changes are hereby made a part of the Plans and Specifications the same as if written therein.

Acknowledge receipt of this addendum by inserting its number and date in the Contractor's Bid Proposal. Failure to do so may subject bidder to disqualification. This addendum forms a part of the Contract Documents and modifies them as follows:

SPECIFICATIONS:

Item No. 1:

Section 01021 Cash Allowances:

2. Specific Cash Allowances, a. – Remove \$10,000.00 Contingency from project.

ARCHITECTURAL:

Item No. 2:

Sheet A201 Window Schedule:

See attached sheet A201.1 for revised Window B storefront elevation to be used at two locations for Additive Alternate No. 1.

ELECTRICAL:

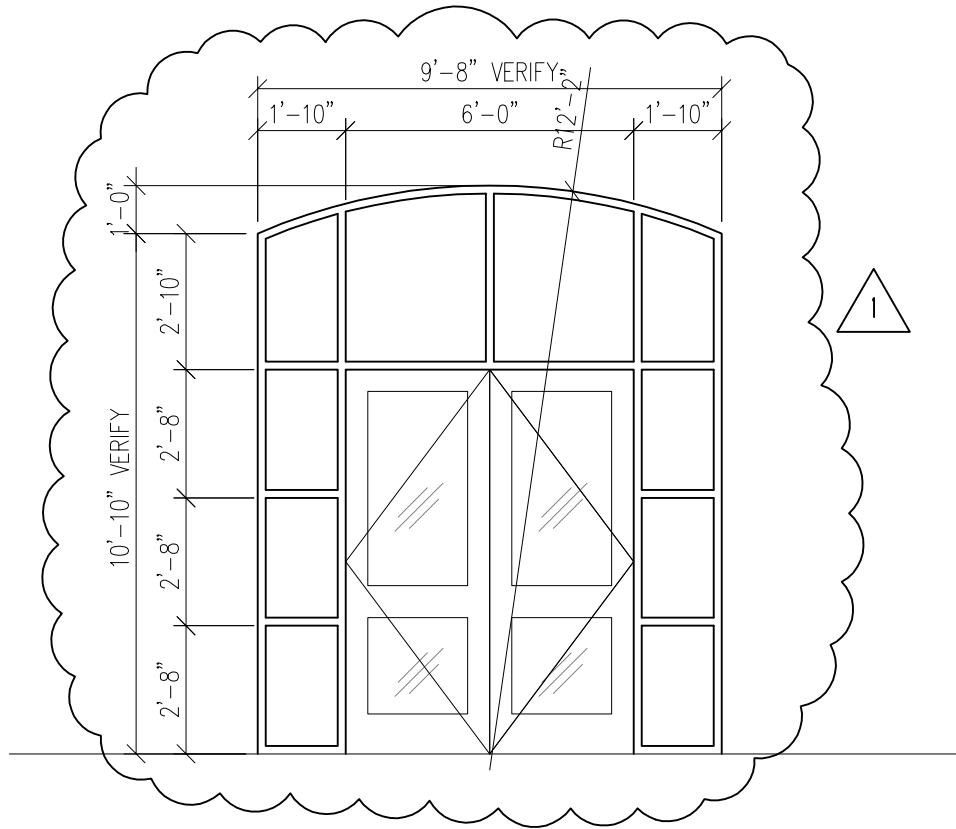
Item No. 3:

Sheet E101:

Replace previously released sheet E101 with revised sheet E101 attached to this addendum. Revisions included the elimination of five (5) recessed light fixtures in Corridor 116 (as shown on E101) and the addition of key note 9 for the Fire Alarm system modification required with this project. Contractor shall include in proposal all cost associated with fire alarm system modifications required by code for the proposed renovation.

END OF ADDENDUM

WINDOW SCHEDULE



1" BRONZE TINTED INSULATING GLASS
IN WHITE ALUMINUM FRAME

ADDITIVE ALTERNATE NO. 1



ADDENDUM NO. 2

REVISED BY SWW 11-07-17

Copyright 2017 BYSParchitects

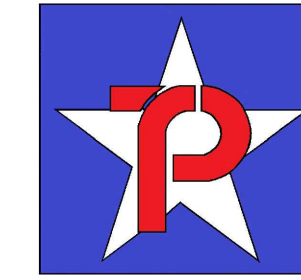
BYSParchitects

1005 Ninth Street - Suite 200 Wichita Falls, Texas 76301 (940) 761-2404
Member American Institute of Architects

PROJ. NO. 17032

DATE 11/07/17

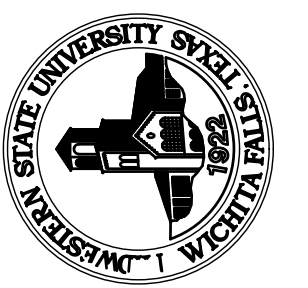
DRAWING NO. A201.1



Tejas Professional Group, PLLC
 Consulting Engineers
 3701 Grapevine Mills Pkwy #1225
 Grapevine Texas 76051
 (214) 458-1108
 Reg. #F-17250
 TPG File #17023



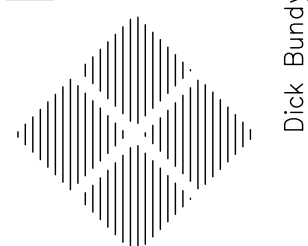
MIDWESTERN
 STATE UNIVERSITY
 SUNWATCHER CLUBHOUSE RENOVATION



BUNDY, YOUNG, SIMS & POTTER, INC.
 ARCHITECTS/PLANNERS/INTERIOR DESIGN

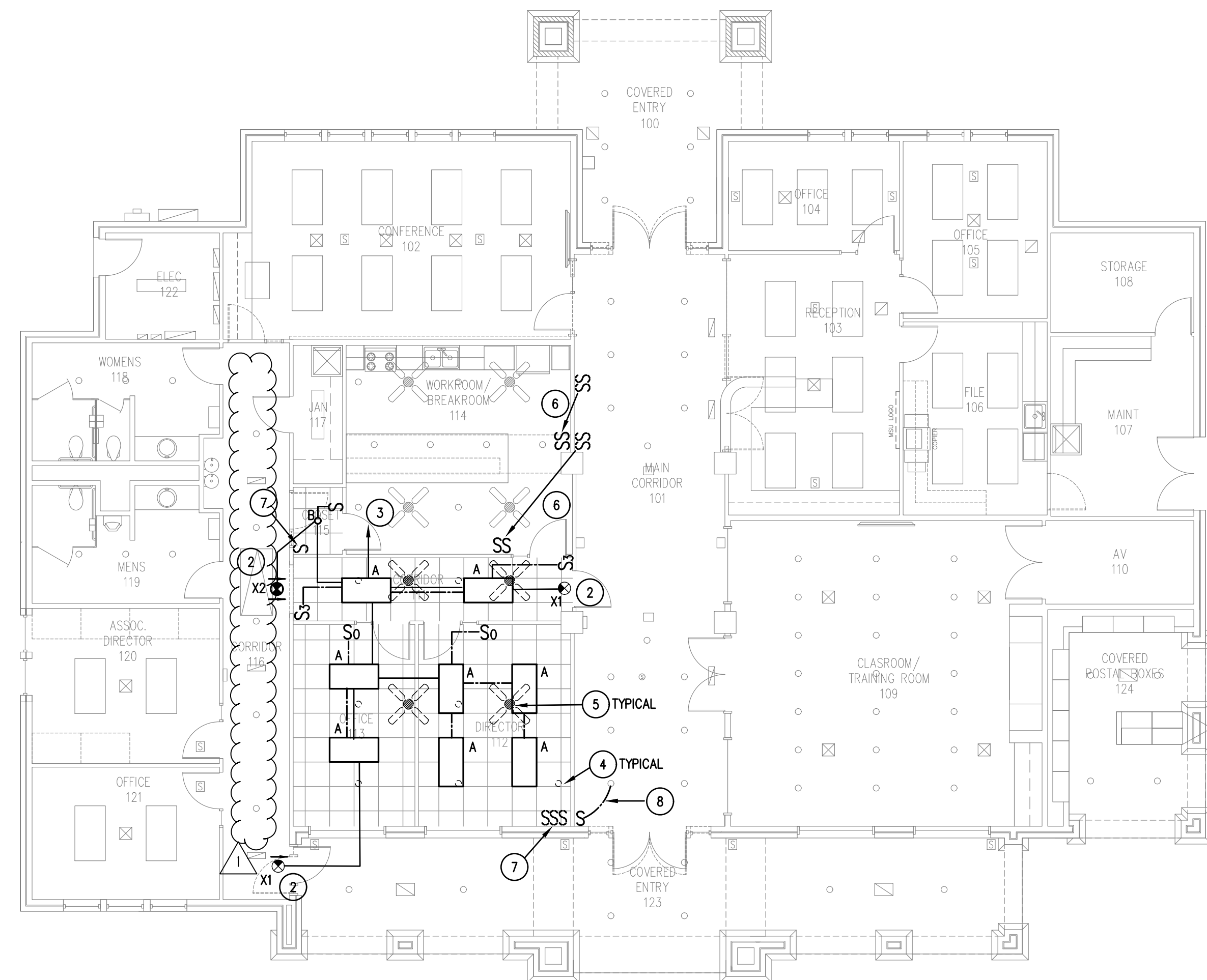
1005 Ninth Street - Suite 200
 Wichita Falls, TX 76301
 Tel: (940)761-4404
 Fax: (940)761-2119

Dick Bundy, FAIA Tom Young, AIA(1949-1993) Rick Sims, AIA David Potter, AIA



DRAWN BY TJD
 CHECKED BY TJD/JWR
 DATE 10/13/2017
 JOB NO. 17032

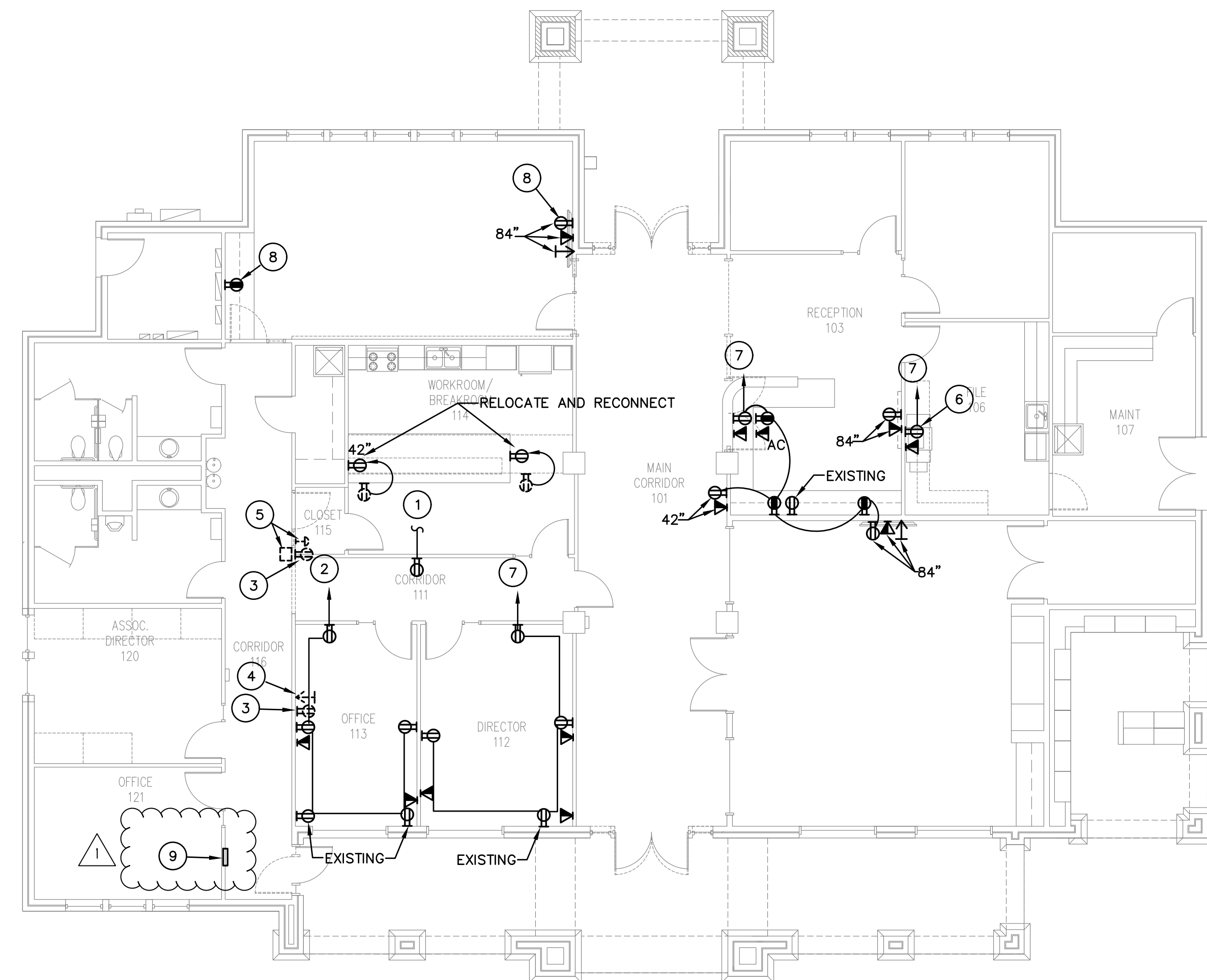
FLOOR PLAN
 ELECTRICAL
 E101
 OF X SHEETS



1 FLOOR PLAN - LIGHTING
 SCALE: 1/8" = 1'-0"

KEYED NOTES:

- 1 REFER TO ARCHITECTURAL REFLECTED CEILING PLAN FOR EXACT FIXTURE LOCATIONS.
- 2 CONNECT TO UNSWITCHED PHASE WIRE.
- 3 CONNECT TO EXISTING CIRCUIT PREVIOUSLY SERVING AREA.
- 4 REMOVE EXISTING DOWNLIGHT, SAVE FOR REUSE
- 5 REMOVE EXISTING CEILING FAN.
- 6 RELOCATE EXISTING SWITCHES AND RECONNECT EXISTING LIGHTS
- 7 REMOVE EXISTING SWITCH/DIMMER.
- 8 RECONNECT EXISTING CORRIDOR LIGHTS TO NEW SWITCH.



2 FLOOR PLAN - POWER & SIGNAL
 SCALE: 1/8" = 1'-0"

KEYED NOTES:

- 1 CONNECT TO EXISTING BREAKROOM RECEPTACLE CIRCUIT.
- 2 CONNECT TO EXISTING RECEPTACLE CIRCUIT PREVIOUSLY SERVING AREA.
- 3 REMOVE EXISTING RECEPTACLE.
- 4 REMOVE EXISTING TV OUTLET.
- 5 REMOVE EXISTING DOOR CONTROL DEVICE.
- 6 NEW SIGNAL OUTLET AND RECEPTACLE ON DEDICATED CIRCUIT TO EXISTING PANEL FOR COPIER.
- 7 TO NEW 20/1 BREAKER IN SPACE OF EXISTING PANEL.
- 8 CONNECT TO EXISTING RECEPTACLE CIRCUIT SERVING AREA.

9 EXPAND/MODIFY EXISTING FIRE ALARM SYSTEM AS NEEDED FOR THE EXPANSION.

ADDENDUM NO. 2

COPYRIGHT 2017 BYSArchitects, Inc.