



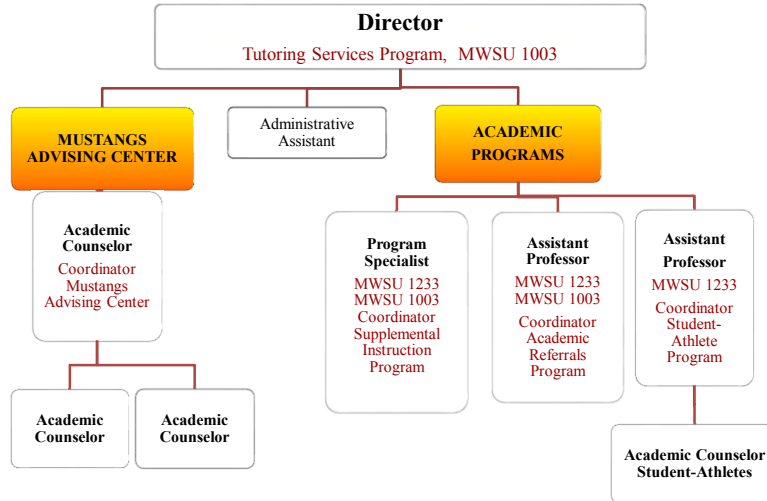
Academic Success Center

McCullough Hall



The mission and purpose of the Academic Success Center is to provide student academic services in support of the mission and policies of MSU and the academic colleges. Specifically, ASC programs directly administer services to students related to college readiness initiatives, degree completion, learning, persistence, and retention.

Academic Success Center Organizational Chart



OVERVIEW ASC PROGRAMS and SERVICES



MSU Polices/Programs	ASC Service Programs
<u>Academic Advising Mustangs Advising Center</u>	<ul style="list-style-type: none"> •First Year Advising , •Pre-Psyc, Pre-Meng, •UNDC, TSI, ABIR, FYP •Campus –wide Advisor Training
<u>Student-Athlete Academic Program</u>	<ul style="list-style-type: none"> •Academic Advising and Degree Progress •Facilitate and supervise Study Hours •Grade Checks
<u>First Year Experience</u>	<ul style="list-style-type: none"> •ABIR Students •MWSU 1233- College Connections •Learning Communities •Peer Leaders Program
<u>First Year Probation (FYP)</u>	<ul style="list-style-type: none"> •Advise and monitor FYP students •MWSU 1003 –Skills for Success
<u>Persistence & Retention</u>	<ul style="list-style-type: none"> •Academic Referrals - Early Alert For Academic Difficulties •Supplemental Instruction - Peer assisted study in high DFW Rates courses •Tutoring Services Program

Academic Success Center Funding Sources



ASC Funding Sources

- Credit Hour Fee(s)
- Instructional Enhancement Fee

Academic Success Center



Adjusted Budget Allocations FY17 - \$617, 382.13

Account Title	Adjusted Budget	
Faculty Salaries	105,750	2 Faculty
Staff Salaries	290,120	7 Staff
Student Salaries	40,000*	Student Employees
Fringe Benefits	140,317	- 38 Fall
Travel	\$5,254	- 20 Spring
M&O	35,077.13	
Utilities	\$864.00	
IEF	10,630	

* ASC Budget is supplemented w/ fee funds from Provost's Office account.

OVERVIEW
ASC PROGRAMS and SERVICES



ASC Services Programs	Programs Activity '16
<ul style="list-style-type: none"> •First Year Advising , •Pre-Psyc, Pre-Meng, •UNDC, TSI, ABIR, FYP •Campus –wide Advisor Training 	Advisees from 6 Academic Colleges 3,203 Contacts/ 2039 Unduplicated
<ul style="list-style-type: none"> •Academic Advising and Degree Progress •Facilitate and supervise Study Hours •Grade Checks and grade reports 	315 Student-Athletes Advising Grade Checks 3 times semester 380 Direct Contact Study Hours
<ul style="list-style-type: none"> •ABIR Students •MWSU 1233- College Connections •Learning Communities •Peer Leaders Program 	MWSU 1233- 16 Sections - 413 students enrolled Learning Communities – 6 sections
<ul style="list-style-type: none"> •Advise and monitor FYP students •MWSU 1003 –Skills for Success 	MWSU 1003 8 Sections - 205
<ul style="list-style-type: none"> •<u>Academic Referrals</u> - Early Alert For Academic Difficulties •<u>Supplemental Instruction</u> - Peer assisted study in high DFW Rates courses •<u>Tutoring Services Program</u> 	AR - 128 SI – 11 SI Leaders, avg. 21 hours study sessions weekly TUTORING – 31 Subjects, 15 Tutors over 500 sessions Fall 16

Academic Success Center
FY 18 Budget Needs



- Add Academic Counselor staff position**
- Fund the Open Administrative Assistant Position (Zero Funded Voluntary Separation Position FY14)**

Academic Success Center

Program Needs FY18

