

Spring 2017

Geoscience and Environmental Science Colloquium Series

Open to the entire campus community

When: Thursday, February 16th

Where: 4:30pm, Bolin 100



Dr. Edith Wilson (President and CEO, Rock Whisperer LLC).

Transformation: from fossil fuels to the future

When: Thursday, March 2nd

Where: 4:30pm, Bolin 100

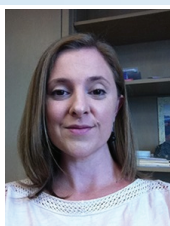


Dr. Bob Finkelman (Research scientist and lecturer, Department of Geoscience, University of Texas at Dallas).

Coal in our society: The good, the bad, and the ugly

When: Thursday, April 6th

Where: 4:30pm, Bolin 100



Dr. Rita Economos (Assistant Professor, Roy M. Huffington Department of Earth Science, Southern Methodist University).

Linking lower crustal gabbros and upper crustal granites in the Sesia Valley tilted crustal section, Ivrea Zone, Italy

When: Thursday, April 20th

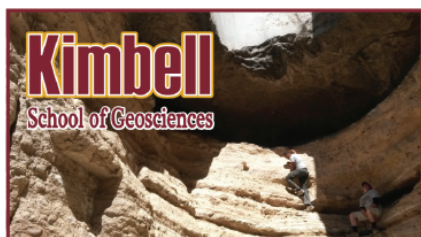
Where: 4:30pm, Bolin 100



Dr. Lynn Soreghan (Maxey Professor, Conoco-Phillips School of Geology and Geophysics, University of Oklahoma).

Glaciation in tropical Pangea

**Sponsored
by**



College
OF SCIENCE & MATHEMATICS
at Midwestern State University

Please e-mail jesse.carlucci@mwsu.edu for questions or to arrange a meeting with the speakers.

To request a disability accommodation, please contact Disability Support Services at (940) 397-4140 at least one week prior to the event.