

## COMING UP

### MONDAY, OCTOBER 16

**Therapy Dogs at Moffett Library**  
6 p.m. Moffett Library

### TUESDAY, OCTOBER 17

**Women's Golf at MSU Invitational**  
All day Wichita Falls Country Club

**Men's Golf at The Hrciar**  
All day Duncan, Oklahoma

### WEDNESDAY, OCTOBER 18

**WFMA at MSU Texas: Visual Voices**  
10 a.m. WFMA

**Lalani Lecture Series: Pedro Lerma**  
2 p.m. Dillard 101

**Softball vs Weatherford College**  
5 p.m. Mustangs Park

**Women's Soccer at UT Permian Basin**  
5:30 p.m. Odessa, Texas

**Therapy Dogs at Moffett Library**  
6 p.m. Moffett Library

**Men's Soccer at Lubbock Christian**  
7 p.m. Dallas, Texas

### THURSDAY, OCTOBER 19

**Moffett Movie: *Stand and Deliver***  
7 p.m. Moffett Library

**Faculty Forum: Kirsten Lodge**  
7 p.m. Legacy Multipurpose Room

### FRIDAY, OCTOBER 20

**OSPR Faculty Research Workshop**  
1-2:30 p.m. Ferguson 201

**Volleyball vs Dallas Baptist**  
6 p.m. D.L. Ligon Coliseum

**Tabletop Terror esports event**  
7-11 p.m. Moffett Library

### SATURDAY, OCTOBER 21

**Cross Country at LSC Championship**  
TBA Portales, New Mexico

**Volleyball vs UT Tyler**  
2 p.m. D.L. Ligon Coliseum

**WFMA: On the Wall Workshop**  
2-4 p.m. WFMA

**Football at Western Oregon**  
3:05 p.m. Monmouth, Oregon

**Men's Soccer vs. Eastern New Mexico**  
5 p.m. MSU Soccer Field

**Women's Soccer vs. Dallas Baptist**  
7:30 p.m. MSU Soccer Field

### MONDAY, OCTOBER 23

**Men's Golf at Dallas Baptist Classic**  
All day Dallas, Texas

**Homecoming: Lip Sync Competition**  
8 p.m. D.L. Ligon Coliseum

**CALENDAR CONTINUED PAGE 2**



Complete 2023 Homecoming Schedule on page 4.

## AROUND CAMPUS

### MSU Texas: "Visual Voices — Who Controls Black Representation?"

The Wichita Falls Museum of Art at MSU Texas will present the exhibition "Visual Voices — Who Controls Black Representation?" beginning Oct. 18. This exhibition is a visual conversation about Black representation in American art through works from the WFMA's Permanent Collection. The exhibition was guest curated by Assistant Vice President for Student Affairs Cammie Dean with contributions from Professor of English Todd Giles. The exhibition will be on display through Oct. 5, 2024. Museum hours are 10 a.m.-5 p.m. Tuesday-Friday and 1-5 p.m. Saturdays. Call the museum at ext. 8900 for more information.

### Lalani Center:Distinguished Lecture Series: Pedro Lerma

Pedro Lerma, CEO of Dallas advertising agency LERMA/, will be the speaker for the

Lalani Center for Entrepreneurship & Free Enterprise Distinguished Lecture Series at 2 p.m. Wednesday, Oct. 18, in Dillard 101. Lerma has produced numerous Super Bowl commercials, including the long-running "Avocados from Mexico" campaign and the "He Gets Us" commercials that ran during Super Bowl LVII. LERMA/ was named Ad Age's "Small Agency of the Year" in both 2022 and 2023, and Lerma was recently presented with the Lifetime Achievement Award by the DFW chapter of the American Marketing Association. He received his BAAS from MSU Texas in 2022. [Read more about Lerma](#) in the MSU Texas news. Call ext. 4625 for more information.

### Faculty Forum: Kirsten Lodge

As per tradition, Faculty Forum will host the annual Hardin Professor presentation at 7 p.m. Thursday, Oct. 19 in the Legacy Hall Multipurpose Room. The 2023 Hardin Professor Award recipient, Kirsten Lodge, Professor of Humanities and English, will present "A Peripatetic Education." Admission

## CALENDAR FROM PAGE 1

### TUESDAY, OCTOBER 24

**Men's Golf at Dallas Baptist Classic**  
All day Dallas, Texas

**Softball vs Murray State College**  
3 p.m. Mustangs Park

**LLC: Felipe Gomez**  
7 p.m. Akin Auditorium

**Speakers & Issues: George Getschow**  
7 p.m. WFMA

### WEDNESDAY, OCTOBER 25

**Undergraduate Research Open House**  
10:30 a.m.-12:30 p.m. CSC 161

**Homecoming: All-school picnic**  
11 a.m.-2 p.m. Rogers Promenade

**Homecoming: Soccer Tailgate Party**  
5 p.m. Lot near Soccer Field

**Volleyball at Texas Woman's University**  
6 p.m. Denton, Texas

**Men's Soccer vs St. Edward's**  
7 p.m. MSU Soccer Field

### THURSDAY, OCTOBER 26

**Homecoming: Trunk or Treat**  
6-8 p.m. Council & Nocona Trail

### FRIDAY, OCTOBER 27

**Respiratory Care CEU Conference**  
7:30 a.m.-5 p.m. Centennial Hall

**Homecoming: Golden Grads Brunch**  
10 a.m. CSC Kiowa

**Softball vs Vernon College**  
3 p.m. Mustangs Park

**Homecoming: Alumni Fish Fry**  
5-7 p.m. Sikes Lake Center

**Homecoming: Cardboard Boat Race**  
6 p.m. Sikes Lake

**Volleyball at Western New Mexico**  
6 p.m. Silver City, New Mexico

**Homecoming: Torchlight Parade**  
9 p.m. BAC

**Homecoming: Pep Rally & Bonfire**  
9:15 p.m. Nocona Trail Parking Lot

### SATURDAY, OCTOBER 28

**Mustangs Rally**  
8 a.m. Campus-wide

**Homecoming: Alumni Awards Brunch**  
Noon CSC Comanche

**WFMA: Crosscurrent Yokohama-Texas Exchange**  
All day WFMA

**Men's Soccer at West Texas A&M**  
1 p.m. Canyon, Texas

**Women's Soccer vs West Texas A&M**  
1 p.m. MSU Soccer Field

**Homecoming: Tailgate Party**  
3 p.m. Memorial Stadium

**Football vs Western New Mexico**  
7 p.m. Memorial Stadium

is free and open to all faculty, staff, students, and the community. For more information visit the [Faculty Forum webpage](#). The Faculty Forum Committee is Assistant Professor of Nursing Stacey Machado, Associate Professor of Philosophy Tyler Williams, and Chair & Prothro Distinguished Professor of Geological Science Jonathan Price. Call Price at ext. 4288 for more information.

## Moffett Movie Madness: *Stand and Deliver*

Moffett Library will present the film *Stand and Deliver* as part of Moffett Movie Madness at 7 p.m. Thursday, Oct. 19, in the Moffett Library Atrium. Sarah Butler, Spanish instructor in the World Languages & Cultures department, will introduce the 1988 movie, which is the story of Jaime Escalante, a high school teacher who successfully inspired his dropout-prone students to learn calculus. Call ext. 4698 for more information.

## OSPR Faculty Research Workshops

Mark your calendar for upcoming Office of Sponsored Programs and Research networking events and professional development opportunities.

**Friday, Oct. 20, 1-2:30 p.m.**, Ferguson 201 or live via Zoom

*Faculty Research Workshop: Forming Effective Collaborations*

Dr. Rick Nader, Global Proposal Solutions

**Thursday, Nov. 2, 9:30 a.m.-12:30 p.m.** (come and go), Ferguson 201, Live and in-person only

*OSPR Coffee and Collaboration – Informal networking event*

Courtney Hoover and Brittany Norman, OSPR

Email [sponsoredprograms@msutexas.edu](mailto:sponsoredprograms@msutexas.edu) with any questions.

## Esports: Tabletop Terror

MSU Texas Esports & Gaming invites you to our yearly spooktacular, Tabletop Terror!

The event is from 7-11 p.m. Friday, Oct. 20, in the Moffett Library Atrium. The event will have free food, door prizes, free tabletop and social games, and a costume contest where the winners will take home some ghoulish prizes! The event is open to faculty, staff, students, and friendly spectators. It is presented by the Moffett Library, MSU Texas Esports and Gaming Club, and Fallscon. [Email Zachary Zoet](#) for more information.

## WFMA: On the Wall Workshops

The Wichita Falls Museum of Art at MSU Texas will host a workshop on exploring portraiture from 2-4 p.m. Saturday, Oct. 21. WFMA Education Coordinator Sara Griego will be the instructor. The workshop is free and materials are provided. Contact the museum at ext. 8900 for more information.

## Speakers & Issues Series: George Getschow

George Getschow, editor of *Pastures of the Empty Page: Fellow Writers on the Life and Legacy of Larry McMurtry*, will tell the origins of this collection of essays at 7 p.m. at the Wichita Falls Museum of Art at MSU Texas. The collection offers an intimate view of McMurtry, America's preeminent western novelist, through the eyes of writers he helped shape through his work over the course of his unparalleled literary life. Getschow, with Associate Professor of English Greg Giddings and Marketing & Public Information Assistant Kathy Floyd, will read their essays, which are included in the anthology. Essays by noted writers such as Lawrence Wright, Stephen Harrigan, Diana Ossana, and Paulette Jiles are also in the collection. Getschow is a Pulitzer finalist and jurist and a former journalism professor at the University of North Texas. The event is free and books will be for sale. Call ext. 4352 for more information.

## Lifelong Learning Center: Felipe Gomez

The MSU Texas Lifelong Learning Center, with funding by The Priddy Foundation, is bringing keynote speaker and pianist **Felipe Gomez** to Akin Auditorium at 7 p.m. Tuesday, Oct. 24, for an evening of inspiration and entertainment. His presentation, "Virtuoso,"

inspires audiences to consistently aim for excellence and create meaningful connections while illustrating it all with help from an on-stage grand piano. Also featured will be former Dean of the Lamar D. Fain College of Fine Arts **Martin Camacho** and pianist **Sung-Soo Cho** for a mini-concert. The event is free. Tickets are available at the MSU Lifelong Learning Center and Clark Student Center. Contact [Sarah Fidler by email](#) or call 940-397- for more information.

## Office of Undergraduate Research Open House

The Office of Undergraduate Research invites the campus and community to come by and visit with us about the services and programs we provide, and learn how to get involved in undergraduate research at MSU Texas. Open to faculty, staff, and students. Call Julie Scales at ext. 6274 for more information.

## Respiratory Care 30-year anniversary

Established in 1993, the MSU Texas Respiratory Care Department has been at the forefront of exceptional respiratory care education for three decades. To mark this monumental milestone, the Respiratory Therapists Association, in collaboration with United Regional Health Care System, will host a free CEU conference for respiratory therapists from 7:30 a.m.-5 p.m. Friday, Oct. 27, at Centennial Hall. **Registration is open now through Oct. 23.**

## WFMA: Crosscurrent Yokohama-Texas Exchange 2023

The exhibition "Crosscurrent Yokohama – Texas Exchange 2023" opens at the Wichita Falls Museum of Art at MSU Texas Saturday, Oct. 28. This is a group exhibition between artists from Japan and Texas celebrating cultural and artistic exchange. The first exhibition was held in 2019 at Kanagawa Kenmin Hall in Yokohama, Japan. The exhibition was to be reciprocated in the United States, but was postponed due to the pandemic. Hosted first in Houston at the Redbud Arts Center, the exhibit finishes at the WFMA with works from 25 artists from Japan and Texas. The exhibition will be on display through Feb. 3, 2024. Museum hours are 10 a.m.-5 p.m. Tuesday-Friday and 1-5 p.m. Saturdays. Call the museum at ext. 8900 for more information.

## Music: Spooktacular Chamber Music Concert

The Department of Music will present a Spooktacular Chamber Music Concert at 7:30 p.m. Monday, Oct. 30, in Akin Auditorium. Admission is free. Call ext. 4267 for more information.

## CAMPUS NEWS

### Faculty/Staff voices needed

How do you define community and belonging? MOSAIC wants to know! As we work to identify new directions for programming and initiatives for MOSAIC, we need your input. Help us to identify new opportunities to address the needs of our campus. Please complete our [short survey](#) before **5 p.m. Wednesday, Oct. 18.** Contact [Cammie Dean](#) at ext. 4500 for more information.

## MARK YOUR CALENDAR

### Moffett Library: Rooftop Heroes

Celebrate Halloween from noon to 6 p.m. Tuesday, Oct. 31, at Moffett Library with the Rooftop Heroes event. This is the library's first mini-convention surrounding pop culture. There will be speakers/panels, a costume contest, an artists' row, and a vendor area for student fundraisers. Join us for a fun and spooky Halloween! Contact [Joseph McNeely by email](#) or call ext. 4091 for more information.

## IN THE SPOTLIGHT

On Sept. 26, Interim Provost **Marcy Brown Marsden** led two round table sessions for the 13th Annual ACAD Deans' Institute. Her sessions were titled "Surviving and Thriving in the Interim Role" and included participants serving in various interim roles at diverse institutions. Program available online [here](#).

**K. Lee Gagum**, assistant professor of World Languages & Cultures, presented her research titled "Reimagined Faustian Legend in Yamazaki's Frau Faust" at the Forty-Seventh Annual Conference of German Studies Association on Oct. 5-8 in Montréal, Québec, Canada. She also was invited to be the commentator and commented for the Asian German Studies Panel titled "German-East Asian Relations since the 1950s: Guest Workers, Cultural Relations, and Cinematic Representation" at the conference.

## WELCOME

**Sarah Griego**  
Museum Curator, Education

**William "Tommy" Magee**  
Admissions Evaluator

**Ashley Penney**  
Academic Counselor, Dillard College of Business Administration

**Adysen McNabb**  
Licensed Professional Counselor, HSHS Grant

**Neftaly Aranda**  
Licensed Professional Counselor, HSHS Grant





# HOME SWEET HOMECOMING

## OCTOBER

### 22 Sunday

#### SPIRIT RALLY

Campus Decorations Begin  
Bridwell Activities Center  
*Noon*

### 23 Monday

#### HOMECOMING T-SHIRT SALE & BONFIRE T-SHIRT EXCHANGE BEGINS\*

Bridwell Activities Center  
9 a.m. to 5 p.m. (Oct. 23 - Oct. 27)

#### LIP SYNC COMPETITION

D.L. Ligon Coliseum  
8 p.m.

### 25 Wednesday

#### ALL-SCHOOL PICNIC & MAVERICK'S 17TH B-DAY PARTY

Jesse Rogers Promenade  
\$7 unless on meal plan  
11 a.m. to 2 p.m.

#### SOCCER TAILGATE

Parking lots 22  
5 p.m.

#### MEN'S SOCCER vs. St. Edward's

MSU Soccer Field  
7 p.m.

### 26 Thursday

#### TRUNK OR TREAT

Council Drive & Nocona Trail  
6 p.m. to 8 p.m.

### 27 Friday

#### GOLDEN GRADS ALUMNI BRUNCH:

Honoring the Class of 1973  
CSC Kiowa (Ticket Required)  
10 a.m.

#### BONFIRE T-SHIRT EXCHANGE ENDS

Bridwell Activities Center  
*Noon*

#### MSU ALUMNI FISH FRY

Sikes Lake Center  
5 p.m. to 7 p.m.

#### CARDBOARD BOAT RACE

Sikes Lake  
6 p.m.

#### TORCHLIGHT PARADE

Begins on Comanche Trail  
(Bridwell Activities Center)  
9 p.m.

#### PEP RALLY & BONFIRE

Nocona Trail South Parking Lot  
9:15 p.m.

### 28 Saturday

#### ALUMNI AWARDS CEREMONY

CSC Comanche  
*Noon*

#### WOMEN'S SOCCER

vs. West Texas A&M  
MSU Soccer Field  
1 p.m.

#### TAILGATE PARTY

Memorial Stadium  
West Parking Lot  
3 p.m.

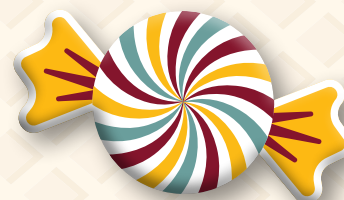
#### FOOTBALL

vs. Western New Mexico  
Memorial Stadium  
7 p.m.

### 29 Sunday

#### SPIRIT RALLY

Campus Clean-up  
Bridwell Activities Center  
*Noon*



## TICKETS

For tickets to athletic events, visit [msumustangs.com](http://msumustangs.com) or call 940.397.4779.

## HOMECOMING T-SHIRTS

Purchase your 2023 MSU Texas Homecoming long-sleeved T-shirt for \$15 in the Bridwell Activities Center (BAC) between 8 a.m. and 5 p.m. Shirts will also be available in the bookstore. Supplies are limited.

## \*T-SHIRT EXCHANGE

Students can bring a T-shirt from another university to the Office of Student Leadership & Involvement and exchange it for a 2023 MSU Texas Bonfire T-shirt. Other university T-shirts collected will be appropriately disposed of during the bonfire.

MIDWESTERN STATE UNIVERSITY

