

# FOOTBALL

# MSU

September 20  
AT&T Stadium  
msumustangs.com

## vs EASTERN NEW MEXICO

Tickets and T-shirts are now on sale! Starting Monday, September 15, share and use this image as your Facebook cover photo. Visit [www.facebook.com/MidwesternState](http://www.facebook.com/MidwesternState).

# the Update

Vol. 44 No. 3  
September 15, 2014

A weekly newsletter published by the Office of Marketing and Public Information

## This Week's Events

### Monday September 15

*Athletics...*  
Women's Golf at Concho River Classic San Angelo, Texas

#### Presidential Search...

**Town Hall Meetings**  
Faculty Noon Dillard 133  
Students 3 p.m. Dillard 133  
Community 6 p.m. Dillard 133

*Athletics...*  
Men's Soccer vs. Lubbock Christian 7 p.m. MSU Soccer Field

*Counseling Center...*  
Workshop: Four Steps to a 4.0 7 p.m. Sundance Meeting Room

### Tuesday September 16

*Athletics...*  
Women's Golf at Concho River Classic San Angelo, Texas

*Presidential Search...*  
Town Hall Meeting: Staff 10 a.m. Dillard 133

*Dillard College of Business Administration...*  
Building the Job I Love Series:  
Matt LeVasseur Noon Dillard 189

*Center for Distance Education...*  
Tech Tuesday: Tracking Attendance  
in D2L for On-campus Courses noon Bridwell 204/206

*Student Development & Orientation...*  
iLead Fall Conference 5-9:30 p.m. CSC

*Athletics...*  
Women's Soccer vs. Oklahoma Christian 6 p.m. MSU Soccer Field

*Athletics...*  
Volleyball at Southern Nazarene 6 p.m. Bethany, Okla.

*Student Government Association...*  
SGA Meeting 7 p.m. CSC Comanche

*Center for Continuing Education...*  
Foreign Film Series: *Ma Vie en Rose* 7 p.m. WFMA

### Friday September 19

*Athletics...*  
MSU Invitational All day MSU Tennis Courts

*Juanita Harvey Art Gallery...*  
Opening Receptions:  
Shawn Ramos, Jesse Baggett,  
Colin Darland and Scott Frish 6 p.m. Harvey Art Gallery

*Athletics...*  
Volleyball at Texas Woman's 7 p.m. Denton, Texas

*Athletics...*  
Women's Soccer vs. Lubbock Christian 7 p.m. MSU Soccer Field

*Athletics...*  
Men's Soccer at Newman 7 p.m. Wichita, Kansas

### Saturday September 20

*Athletics...*  
MSU Invitational All day MSU Tennis Courts

*Athletics...*  
Women's Cross Country  
at Missouri Southern Stampede Joplin, Mo.

*Athletics...*  
Volleyball at Texas A&M-Commerce 2 p.m. Commerce, Texas

*Caribbean Students Organization...*  
Caribfest Launch 4 p.m. CSC Comanche

Athletics...

Lone Star Football Festival at AT&T Stadium...

Football vs. Eastern New Mexico 8 p.m. Arlington, Texas

## Sunday

September 21

Athletics...

Men's Soccer vs. St. Mary's Noon MSU Soccer Field

Athletics...

Volleyball vs. Texas-Permian Basin 3 p.m. Ligon Coliseum

## Around Campus

### Presidential Search Town Hall Meetings

With the search for the Midwestern State University's 11th president under way, the university will host a series of open forum town hall meetings to solicit input from campus and community constituents about the qualities and experiences that the university should seek in its next president. The meetings are organized around student, faculty, and community groupings. The groups are scheduled for convenience; however, anyone is invited to attend any of the forums as schedules permit.

#### Monday, September 15

Faculty Town Hall Noon Dillard 133

Student Town Hall 3 p.m. Dillard 133

Community Town Hall 6 p.m. Dillard 133

#### Tuesday, September 16

Staff Town Hall 10 a.m. Dillard 133

Joining the forums will be representatives from Academic Search, the search firm that is assisting MSU in the process. If individuals are unable to attend one of these sessions, an online survey allows the opportunity to provide direct and confidential input regarding the presidential search:

[www.mwsu.edu/presidential-search/suggestions-comments](http://www.mwsu.edu/presidential-search/suggestions-comments).

### Building the Job I Love Series: Matt LeVasseur

Matt LeVasseur graduated from MSU in 1987 with a marketing degree and went to work for a local dental supply company. About a year later he launched his own company, Midwest Dental Equipment & Supply, in (where else) his own garage. The company quickly outgrew that garage and today Midwest Dental has about 100 employees with offices from Houston to Oklahoma City. Then in 2004, LeVasseur launched another career as an independent oil producer. His company Acadia Oil has drilled many wells in Wichita County. LeVasseur will be guest speaker of Building the Job I Love Series at noon Tuesday, September 16, in Dillard 189. LeVasseur's son will join him at the presentation. Jordan, a 2013 MSU graduate in management, has joined the family business. Free pizza and soda will be provided. The series is sponsored by the Dillard College of Business Administration's Lalani Center for Entrepreneurship and Free

Enterprise. For more information, contact Dr. Jeff Stambaugh at ext. 4634.

### Tech Tuesday Topics for September

The Center for Distance Education will resume Tech Tuesdays this semester. Grab your lunch and join in.

Tracking Attendance in D2L

for On-Campus Courses Noon September 16

ProctorU Noon September 23

Using D2L to Enhance

On-Campus Courses Noon September 30

All discussions will be located in Bridwell 204/206.

To offer suggestions for other topics or if interested in presenting a topic, please email Crystal Boyle at [crystal.boyle@mwsu.edu](mailto:crystal.boyle@mwsu.edu).

### Film Series: *Ma Vie en Rose*

The Center for Continuing Education and Dr. Donnie Kirk will present the 1997 French film *Ma Vie en Rose* as part of its annual film series at 7 p.m. Tuesday, September 16, at the Wichita Falls Museum of Art at MSU. *Ma Vie en Rose*, comical yet poignant, tells the story of a 6-year-old boy who believes he is a girl. One of the first films to spotlight transgender feelings in young children, the film depicts the difficulties facing a child with gender identity issues and how the confused parents, family, society, school, other children, and neighborhood handle the situation. Admission is free, with donations welcome. The film is rated R. For more information, call ext. 4307.

### MSU Credit Union Paycheck Loan

The deadline to pick up a paycheck loan through the MSU Credit Union is Thursday, September 18. Requests must be submitted by 3 p.m. Wednesday, September 17. Any full-time, benefit-eligible employee and member of the Credit Union by apply for a paycheck loan. For more information, call ext. 4622.

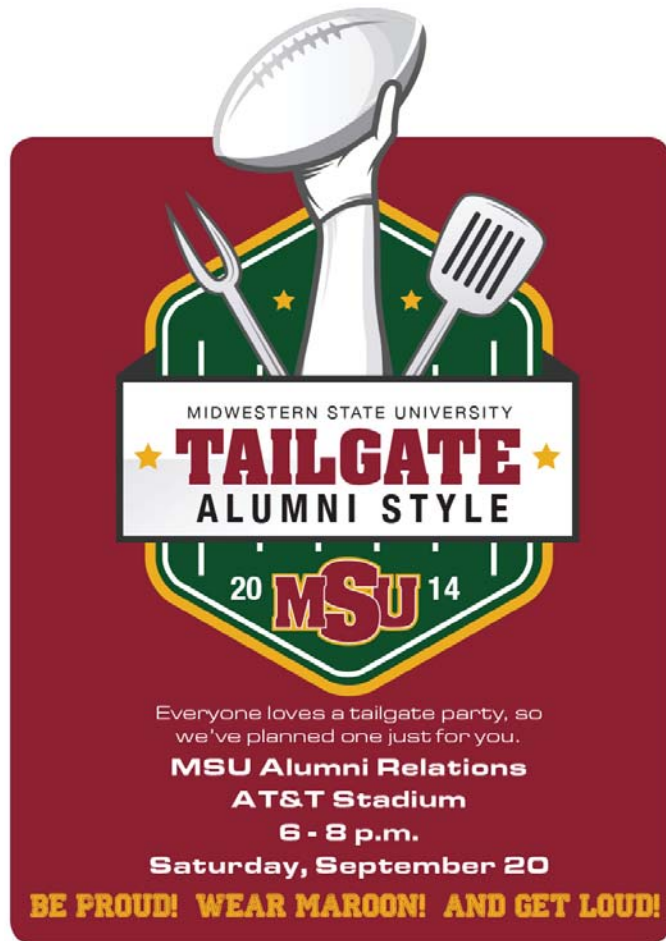
### Juanita Harvey Art Galley Opening Receptions

The Juanita Harvey Art Gallery will play host to opening receptions for exhibits from printmaker Scott Frish and award-winning students Shawn Ramos, Jesse Baggett, and Colin Darland from 6-8 p.m. Friday, September 19, in the main and foyer galleries. For more information, call ext. 4264.

### Caribfest Launch

The Caribbean Students Organization will kick off the 20th year of Caribfest with a grand launch at 4 p.m. Saturday, September 20, at CSC Comanche Suites. Proceeds from this year's activities will go to the Wichita

Falls Independent School District and the ARC of Wichita County. For more information, contact Yvonne Albert, MSU CSO public relations officer, at [Yvonne.albert@csoweb.org](mailto:Yvonne.albert@csoweb.org).



## Tailgate Alumni Style

The MSU Alumni Association, along with other alumni, will fire up the grill and cook up a good time before the 8 p.m. MSU football game at AT&T Stadium on September 20. Look for the MSU flags on the northwest side of the stadium and listen for the Loud Crowd.

Advance tickets are \$25 for adults and \$10 for students. Tickets purchased at the door are \$30 for adults and \$12 for students. To be admitted with a student ticket, bearer must be between 1 and 18 years old or present a valid college ID. Purchase advance tickets at the MSU Athletics Office via credit card by calling ext. 4779.

Please RSVP for the Alumni tailgate to [alumrel@mwsu.edu](mailto:alumrel@mwsu.edu) or call ext. 4121.

## Mark Your Calendar

### Academic Workshop: Taming Test Anxiety

The MSU Counseling Center will present a one-hour academic workshop about Taming Test Anxiety at 7 p.m. Monday, September 22, in the Sundance Court Third Floor Meeting Room. Professors are welcome to include this information in their syllabi and offer extra credit to students if desired. Students will be provided attendance verification forms. For more information, call ext. 4618.

### Philosophy Club: The Sickness of Consciousness

The Philosophy Club and Dr. Kirsten Lodge will present "The Sickness of Consciousness" at 7 p.m. Tuesday, September 23, in Dillard 129. Throughout the 19th century, philosophers and writers increasingly came to see civilization as a corrupting force, as societies grew more civilized, they became feeble, sick, old—in a word, decadent. Many well-known philosophers viewed not only civilization, but consciousness itself as a kind of sickness. This lecture will give an overview of the development of this idea in the works of modern western philosophers and writers from Rousseau to Dostoevsky. A question-and-answer period will follow the lecture. Admission is free with donations to MSU Philosophy Club accepted. For more information, contact Jonathan Henderson at [jhendersonM711@gmail.com](mailto:jhendersonM711@gmail.com).

### Moffett Library Workshop

The library is sponsoring a one-hour workshop to help students find the best resources for any topic. The Good, the Bad, and the Ugly: Evaluating all resources to find the best will presented at the following times:

Wednesday, September 24	11 a.m. or 7 p.m.
Thursday, September 25	1 p.m. or 4 p.m.

All sessions will be located in the Moffett Media Room. For more information, contact Librarian Allison Breen at ext. 4177.

### Caribfest Band Launch/Registration

The Caribbean Students Organization will present a Caribfest band launch and registration from noon-2 p.m. Thursday, September 25, in Sunwatcher Plaza. Proceeds from this year's activities will go to the Wichita Falls Independent School District and the ARC of Wichita County. For more information, contact Yvonne Albert, MSU CSO public relations officer, at [Yvonne.albert@csoweb.org](mailto:Yvonne.albert@csoweb.org).

### Lunch with the Mustangs

Join the Mustangs Athletic Club and the Department of Athletics for a lunchtime update about your MSU



Mustangs at noon Thursday, September 25, at the Wichita Falls Museum of Art at MSU. Lunch is \$5 for MAC members and \$6 for non-members. For more information, call ext. 4779.

## Books are Better for Banning and Burning than Page Turning

In conjunction with Banned Books Week, the Moffett Library Special Collections department and Dr. Todd Giles, Assistant Professor of English, will present "Books are Better for Banning and Burning than Page Turning" at 5 p.m. Thursday, September 25, in Moffett 215. Giles will speak about the 1957 obscenity trial of Allen Ginsberg's *Howl and Other Poems* in San Francisco and the factors that led to the banning of other famous books, as well as pose questions about why books are banned in the first place. Hors d'oeuvres will be served. For more information, contact Giles at [todd.giles@mwsu.edu](mailto:todd.giles@mwsu.edu).

## Campus News

### Free Shuttle to Home Football Games

A City of Wichita Falls bus will be available as a free shuttle service for MSU students traveling to and from the home football game on Saturdays. The service will pick up between 5:15-6:30 p.m. for those games with a 7 p.m. kick off at the locations along the current Mustangs Route (e.g. main campus, Colony Park, Mustangs Village). The bus will make a trip, then repeat, with the last pregame pick-up occurring on campus at 6:30 p.m. The bus will be available to bring students back to campus or their respective stop along the Mustangs Route after the game ends. The shuttle will make the route two times for the post game. As a reminder, presentation of a current MSU ID is required when boarding the shuttle.

### Campus Recycling Efforts

Facilities Services would like to remind everyone of the campus' recycling efforts:

- The orange dumpsters outside the Clark Student Center (southwest corner), McCullough-Trigg (southeast corner), and Dillard College of Business Administration (northeast corner) are available for recycling many items such as aluminum, newspapers, plastics (no. 1-7), glass, cardboard, milk jugs, tin, and steel. Some of the few exceptions are Styrofoam, food, wood, and electronics. Separation of the trash by material type is **NOT** required in these dumpsters.
- Athletics (Ligon 134) accepts inkjet and laser cartridges, as well as small retired electronics such as digital cameras, MP3 players, GPS devices and cell phones.
- The Moffett Library recycles newspapers (north side of the building).
- Hydration (reusable bottle fill) stations are located

in the Clark Student Center, Hardin South, Prothro-Yeager, Bolin, and the Student Wellness Center.

Please make use of these opportunities whenever possible.

### Tutors Needed

For those interested in tutoring MSU students, please apply to be added to the MSU tutor list. Tutors in all subjects are needed as well as note-takers for various courses. Applicants must have completed a minimum of 45 hours at MSU and have a 3.0 GPA. For more information, contact Disability Support Services at ext. 4140.

## Thank You

My family and I wish to express our genuine, heartfelt thanks for the overwhelming outpour of support that was received during the difficult days experienced in the loss of my mother, Lucille Bell. Our gratitude is immeasurable. The MSU Family is priceless. Thanks again.  
*Sincerely, Kathi Shilanski*

## Jobs

*An EEO/ADAAA Compliance Employer*

**Secretary**, Office of Undergraduate Research (Open off campus)

**Department:** Office of the Provost

**Starting Date:** As soon as possible

**Starting Salary:** \$1,743 monthly, plus benefits

## In the Spotlight

**Whitney Snow**, Assistant Professor of History, has an article, "Ornamental, crop or invasive: The history of the Empress (Paulownia) in the USA," published by the peer-reviewed journal *Forests, Trees and Livelihoods*.

**Nathan Jun**, Associate Professor of Philosophy, presented on "Political Theory and Social History" and "Hegel and Anarchist Communism" at the 3rd Annual Anarchist Studies Network Conference at Loughborough University in Loughborough, UK, on September 4-5.

## From the Bookstore

- Just arrived: \$14.95 crew neck sweatshirts
- Stay tuned to our Facebook page for our next FLASH SALE!
- One 4-foot section of peg board on our back dock is FREE to the first person to come and get it.

The MSU Bookstore is accepting applications for an Assistant Manager. Requirements for this position include:

- Proven supervisory and customer service skills
- Outgoing, energetic, self-motivated
- Knowledgeable of the MSU community

- Excellent written and oral communication skills
- Computer literate
- Open availability

Please direct all applicants to Jenny Denning at [jenny.denning@mwsu.edu](mailto:jenny.denning@mwsu.edu) or call ext. 4384.

## Free

The Department of Mass Communication has extra ink cartridges for any printer in the HP 4600 series: black (part no. C9720A), cyan (part no. C9721A) and magenta (part no. C9723A). Please contact ext. 4391 if you need them. These cartridges are not for personal use.

## For Sale

Close to MSU, **zero lot line home** in Park Place (1915 Club View): 1,928 square feet, 3 bedroom, 2 bathroom, 2-car rear entry garage, formal dining, gas fireplaces in living and master bedrooms, sprinkler system, and a covered back porch. Realtor website is <http://bishoprealtors.com/> or call 232-4068.

**House located in Southwest Wichita Falls** near Memorial Stadium: 4935 Trinidad Dr. has 1,590 square feet, 3 bedrooms, 2 bathrooms, sprinkler system, and a two-car garage. Excellent landscaping and a large, kid-friendly backyard. Realtor website is <http://bishoprealtors.com/> or call 232-4068.