



# RADIOLOGIC SCIENCES BSRS ORIENTATION

Following are some highlights of importance to our distance students (Students can click on any blue underlined item to be taken to that webpage)

Please click to move forward in the orientation

# About MSU

- Midwestern State University is a public coeducational institution. It was founded in 1922 as Wichita Falls Junior College. It became a four year college called Hardin College in 1946. In 1975, we became Midwestern State University.
- **MSU Traditions**
  - Colors
    - Maroon & Gold
  - Mascot
    - Mustangs (formerly Indians)
  - The MSU Tower - MSU's landmark
    - The bells in the tower play familiar tunes to mark special occasions.
  - The Sunwatcher
    - This statue of a South Plains Indian by Jack Stephens exemplifies the progressive spirit of the university. MSU has been adopted by the Kiowa Tribe.





# The Founding of Our Programs (1)

The Radiologic Sciences Program at Midwestern State University started through a consortium agreement with a hospital-based program operated by what was then Wichita General Hospital in 1972 offering both the AAS and BSRT degrees. The founding faculty were primarily retired US Air Force x-ray instructors lead by *Anton "Tony" Zembrod*. Their strong ties to Sheppard Air Force Base and their x-ray program was very important because MSU had no lab facilities for their fledgling program so they were able make arrangements for our program to use the Air Force facilities.

By 1974 it had become evident that if the BSRT degree program was to survive the geographic isolation of Wichita Falls, it would have to extend beyond the brick and mortar of the physical classroom. Again, the faculties' Air Force experience of training troops around the globe assisted them in developing what is believed to be the first distance education program in the radiologic sciences anywhere in the US. We started with printed modules to accompany standard text books. Paper exams were completed by the students and the answer sheets were mailed to the instructors. The exams were hand graded and returned to the students with feedback on missed questions. At the end of each semester the students were required to come on campus on the designated "Modular Weekend" to take their final exams.



## The Founding of Our Programs (2)

In an effort to grow the program we started traveling to major cities in Texas to administer final exams. We also applied numerous technological advances to our course delivery. We recorded video supplements for our courses. We experimented with 2-way interactive video but both our students and the instructors failed to embrace that technology.

The years of 1997-98 proved to be big years for the Radiologic Sciences Program with the first Masters of Science in Radiologic Sciences graduating class anywhere in the US. In 1998, the first Radiologic Sciences course was offered online. This was done without the benefit of the delivery software that is currently available. The following year MSU made the commitment to distance education signing a contract for our first learning management software. We have continued to explore other enhancements such as digital videos and Flash animations. We were named one of 2021's best school for online programs and courses in radiologic technologist education by EduMed.org.





## The Founding of our Programs (3)

Our AAS degree program has grown from a class of 15 with 5 clinical sites to a class of as many as 60 with 20 clinical sites. With the recent downturn in the job market, we have reduced our class size to 50-55 students. The BSRS program has grown from under 100 students to our current 350-plus students. Since that first MSRS class in 1997, over 300 students have graduated with emphasis in Radiologic Administration, Radiologic Education, or Radiologist Assistant. As is our tradition of leadership in our profession, our RA program was one of the original four programs in the US started with grants from the ASRT.

We have transitioned our AAS degree program to a BSRT degree program. That means that we now have the entry-level BSRT program and the BSRS degree-completion program for registered technologists. The last AAS class graduated in May, 2015. Our first BSRT class graduated in May, 2016.

You will find MSU faculty and graduates as presenters at state, national, and international meetings. They will also be found in leadership positions in many professional organizations at the state and national level.



# Radiologic Sciences Programs Overview - BSRT

Midwestern State University is accredited by the Southern Association of Colleges and Schools Commission on Colleges (SACSCOC) to award the baccalaureate, and masters degrees for the Radiologic Sciences. Questions about the accreditation of Midwestern State University may be directed in writing to the Southern Association of Colleges and Schools Commission on Colleges at 1866 Southern Lane, Decatur, GA 30033-4097, by calling (404) 679-4500, or by using information available on SACSCOC's website ([www.sacscoc.org](http://www.sacscoc.org)).

- **Bachelor of Science in Radiologic Technology**

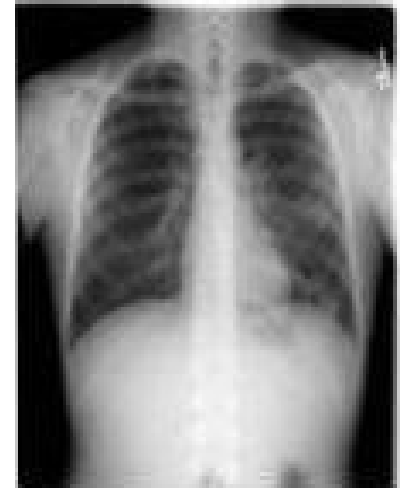
- Started in 1972 as an Associate of Applied Science in Radiologic Science & transitioned to the BSRT in 2014
- JRCERT accredited
- Affiliated with over 25 health care facilities throughout Texas and Oklahoma
- Maximum class size - 60 students





# Radiologic Sciences Programs Overview - BSRS

- **Bachelor of Science in Radiologic Sciences**
  - **Past:**
    - Started in 1974 as an independent study program
    - Printed course materials
      - Videotape supplements
      - Interactive television sessions
    - Utilized mail & telephone
      - Long lag-time for feedback on tests
    - Students were required to come on-campus for final exams
    - Limited course selection
  - **Present:**
    - Internet delivery of course materials
      - Downloadable files
      - Interactive web-based
    - E-mail, telephone, discussion boards & chat.
    - Students take proctored online final examinations anywhere with Internet access (webcam & fee required).
    - Specialty tracks available, many of which will help you prepare for advanced certifications.
    - Computed Tomography Certificate Program





# Radiologic Sciences Programs Overview – MSRS

- **Master of Science in Radiologic Sciences**
  - Started in 1994
  - Majors in:
    - Radiologic Administration
    - Radiologic Education
    - Radiologist Assistant
  - Two intensive on-campus weekends each long semester.







# University Services

- **Dean of Students**
  - Administers the Code of Student Conduct.
  - Coordinates student withdrawals from the university (If you drop all of your courses).
  - Provides assistance to students involved in an accident or who are seriously ill.
  - Toll-free phone #: 1-888-854-3494
- **Vinson Health Center**
  - Maintains immunization records & clears students for enrollment in those courses considered to have a “clinical” component.
  - Students enrolled in such courses that are in “non-compliance” will be withdrawn from the course.
- **Moffett Library**
  - Online catalog of holdings available via the Internet.
  - Access to numerous online databases (many require connecting through the university’s portal ([my.mwsu.edu](http://my.mwsu.edu))).



# University Services Con't

- **Financial Aid/Scholarships**
  - Contact the Financial Aid Office and the Program Chair if you wish to be considered for financial aid.
- **Veterans Benefits**
  - This program qualifies for veteran's benefits. If you are a veteran, contact the MSU Office of Veterans Affairs.
- **Business Office**
  - It is the student's responsibility to correct or change his or her billing address with the Business Office. All payments are due in accordance with university payment schedules regardless of postal errors.
  - Contact the Business Office for any questions concerning tuition, fees, payment information, or charges to your account.
  - Payment of Fees
    - Complete information on payment options can be found at the **fee payment page**.
- **Textbooks**
  - The Bookstore carries:
    - Spirit merchandise (mugs, tee-shirts, etc.),
    - School supplies,
    - Computer software (educational discounts of 20-60%),
    - Textbooks.
  - Items can be purchased online and shipped to you.



# The BSRS Degree Plan

- The BSRS degree requires the following:
- 120 semester hours of non-remedial college course work
  - 30 semester hours must be taken from MSU (residency requirement)
  - 33 semester hours must be advanced (Jr./Sr.-level). Here at MSU, this is any 3000-4000 level course
    - Both of these requirements can be satisfied by enrolling in our distance education courses
- The 120 semester hour degree plan is broken down into two (2) distinct sections:
  - Major courses
  - Basic Core courses





# The BSRS Degree Plan- Major Courses

- Major - 78 semester hours
  - 42 sem. hrs. credit for your initial training – These credits are awarded when you apply for graduation for one of the three accepted (ARRT, NMTCB, or ARDMS) certifications. You must be in good-standing when the hours are awarded.
  - 33 sem. hrs. of advanced-level radiologic sciences courses taken from us:
    - Major Core – 3 sem. hrs. of Statistics or Data Analysis. This can be transferred in and can be at any level (freshman-senior).
    - Professional Core - 21 sem. hrs., everyone must complete these 7 courses. RADS 4913, Applied Research, is a capstone course and should be taken in your last or next to last semester. RADS 3503, Research, should be taken the semester immediately preceding Applied Research.
      - **ACADEMIC ADVISOR'S TIP:** Be sure that you enroll in RADS 4913 during early registration. If you wait for regular registration, this course will be full & no overrides will be granted.
    - Professional Electives or Track courses - 12 sem. hrs., select any 4 courses or complete the desired track courses. Tracks are available for CT, MRI, Education, Mammography, Quality Management, and Administration. Course credit for advanced certifications will be applied in this section upon application for graduation.

MAJOR (78 Sem. Hrs.)	Cr. Hrs	Comp	Adv Hrs	
ARRT REGISTRY	42	42		
Statistics/Data Analysis (any level)			3	Major Core (3 hrs)
RADS 3203 Pathophysiology	3			Professional Core (Required) (21 hrs)
RADS 3213 Adv. Clinical Skills	3			
RADS 3503 Research	3			
RADS 3773 Radiobiology & Protec	3			
RADS 4633 Cont. Quality Improve	3			
RADS 4643 Health Law	3			
RADS 4913 Applied Research	3			
RADS 3313 Radiation Therapy	3			SELECT ANY 4 COURSES (TOTAL 12 HRS)
RADS 3413 Cardio. & Inter. Proc.	3			
RADS 3833 Bone Densitometry	3			
RADS 4513 Admin & Supervision	3			
RADS 4533 Informatics and Imaging	3			
RADS 4703 Principles of CT	3			
RADS 4723 CT-Physics	3			
RADS 4733 Sectional Anatomy	3			
RADS 4743 MRI	3			
RADS 4753 Mammography	3			
RADS 4763 Mammo Quality Practice	3			
RADS 4773 MRI Applications	3			
RADS 4783 CT Applications	3			
RADS 4813 Teaching Strategies	3			
RADS 4853 Forensic Medical Imag	3			
RADS 4903 Selected Topics	3			
SUB-TOTAL	78		33	



# The BSRS Degree Plan-Basic Core 1

**Basic Core** – 42 semester hours completed at a college or university near you and transferred to MSU (**see tip below**) or complete them on-line from MSU. You may already have many of these. Your transcripts will be evaluated on a course-by-course basis by our Registrar's Office to determine which courses will be accepted in-transfer by MSU. Confirm with your advisor that your courses will transfer before enrolling in them. The Basic Core is broken down as follows:

- **Communication - 6 semester hours**
  - 3 hours of academic writing and research
    - ENGL 1103 Intro to Communication
    - SPCH 1103 Intro to Communication
    - ENGL 1123 Rhetoric & Composition (TCCN: ENGL 1302)
    - ENGL 1143 Academic Research & Writing1
  - 3 hours from the following list of options
    - ENGL 1153 Intro to Reading & Writing about Literature
    - ENGL 2123 Rhetoric, Visuals, and Infographics
    - ENGL 2203 Intro to Professional Writing1
    - MCOM 1243 Media Writing and Reporting
    - MCOM 2403 Social Media
    - SPCH 1133 Fund. of Speech Communication
    - SPCH 2423 Interpersonal Communication
- **Mathematics - 3 semester hours**
  - MATH 1053 Contemporary Mathematics (TCCN: MATH 1332)
  - MATH 1203 Mathematical Analysis for Business (TCCN: MATH 1324)
  - MATH 1233 College Algebra (TCCN: MATH 1314)
  - MATH 1534 Precalculus (TCCN: MATH 2412)
  - MATH 1634 Calculus I (TCCN: MATH 2413)

BASIC CORE (42 Sem. Hrs.)	Cr Hrs	Transferred Credits & Substitutions	
		Course Prefix & #	Institution
<b>COMMUNICATION</b>			
ENGL 1123 or 1143	3		
Select one from attached list	3		
<b>MATHEMATICS</b>			
College Level Math	3		
<b>SCIENCE</b>			
Select one from attached list.	4		
Select one from attached list.	4		
<b>LANGUAGE, PHILOSOPHY, &amp; CULTURE</b>			
Select one from attached list.	3		
<b>CREATIVE ARTS</b>			
Select one from attached list.	3		
<b>AMERICAN HISTORY</b>			
HIST 1133 Amer. History to 1865	3		
HIST 1233 Amer. History since 1865	3		
<b>GOVERNMENT/POLITICAL SCIENCE</b>			
POLS 1333 American Government	3	MUST BE FROM	A TX SCHOOL
POLS 1433 American Government	3		
<b>SOCIAL &amp; BEHAVIORAL SCIENCE</b>			
Select one from attached list.	3		
<b>COMPONENT AREA</b>			
Cultural & Global Understanding			
Select one from attached list.	3		
Undergraduate Inquiry & Creativity			
Select one from attached list.	3		
<input type="checkbox"/> CORE COMPLETE	<b>SUB-TOTAL</b>	<b>42</b>	

(TCCN = Texas Common Course Number) **CONTINUED**





# The BSRS Degree Plan-Basic Core 2

- **Life & Physical Sciences - 6 semester hours**
  - BIOL 1103 Introduction to Biology
  - BIOL 1133 Anatomy & Physiology I
  - BIOL 1134 Anatomy & Physiology I (TCCN: BIOL 2401)
  - BIOL 1144 General Zoology (TCCN: BIOL 1413)
  - BIOL 1233 Anatomy & Physiology II
  - BIOL 1234 Anatomy & Physiology II (TCCN: BIOL 2402)
  - BIOL 1544 General Botany (TCCN: BIOL 1411)
  - CHEM 1103 Introductory Chemistry (TCCN: CHEM 1305)
  - CHEM 1143 General Chemistry I (TCCN: CHEM 1311)
  - CHEM 1243 General Chemistry II (TCCN: CHEM 1312)
  - CHEM 1303 General Organic Biological Chemistry (TCCN: CHEM 1306)
  - ENSC 1114 Foundations of Environmental Science (TCCN: ENVR 1401)
  - GEOS 1134 Physical Geology (TCCN: GEOL 1403)
  - GEOS 1234 Historical Geology (TCCN: GEOL 1404)
  - GNCS 1104 Life Earth Science
  - GNCS 1204 Physical Science
  - PHYS 1144 General Physics I (TCCN: PHYS 1401)
  - PHYS 1244 General Physics II (TCCN: PHYS 1402)
  - PHYS 1533 Descriptive Astronomy
  - PHYS 1624 Mechanics, Wave Motion, & Heat (TCCN: PHYS 2425)
  - PHYS 2644 Electricity & Magnetism & Optics (TCCN: PHYS 2426)

**CONTINUED**

BASIC CORE (42 Sem. Hrs.)	Cr Hrs	Transferred Credits & Substitutions	
		Course Prefix & #	Institution
<b>COMMUNICATION</b>			
ENGL 1123 or 1143	3		
Select one from attached list	3		
<b>MATHEMATICS</b>			
College Level Math	3		
<b>SCIENCE</b>			
Select one from attached list.	4		
Select one from attached list.	4		
<b>LANGUAGE, PHILOSOPHY, &amp; CULTURE</b>			
Select one from attached list.	3		
<b>CREATIVE ARTS</b>			
Select one from attached list.	3		
<b>AMERICAN HISTORY</b>			
HIST 1133 Amer. History to 1885	3		
HIST 1233 Amer. History since 1885	3		
<b>GOVERNMENT/POLITICAL SCIENCE</b>			
POLS 1333 American Government	3	<b>MUST BE FROM</b>	<b>A TX SCHOOL</b>
POLS 1433 American Government	3		
<b>SOCIAL &amp; BEHAVIORAL SCIENCE</b>			
Select one from attached list.	3		
<b>COMPONENT AREA</b>			
Cultural & Global Understanding			
Select one from attached list.	3		
Undergraduate Inquiry & Creativity			
Select one from attached list.	3		
<input type="checkbox"/> <b>CORE COMPLETE</b>	<b>SUB-TOTAL</b>	<b>42</b>	



# The BSRS Degree Plan-Basic Core

- **Language, Philosophy & Culture - 3 semester hours**
  - ENGL 2413 World Literature I (TCCN: ENGL2332)
  - ENGL 2423 World Literature II (TCCN: ENGL2333)
  - ENGL 2613 Survey of American Literature I (TCCN: ENGL 2327)
  - ENGL 2623 Survey of American Literature II (TCCN: ENGL 2328)
  - ENGL 2813 Survey of English Literature I (TCCN: ENGL2322)
  - ENGL 2823 Survey of English Literature II (TCCN: ENGL2333)
  - FREN 1134 Elementary French I (TCCN: FREN 1411)
  - GERM 1134 Elementary German I (TCCN: GERM1411)
  - HIST 1333 Western Civilization I (TCCN: HIST 2311)
  - HIST 1433 Western Civilization II (TCCN: HIST2312)
  - HUMN 2013 Humanities: The Ancient World
  - HUMN 2023 Humanities: Medieval Cultures
  - HUMN 2033 Humanities: Renaissance through Realism
  - HUMN 2043 Mid-19th through 20th Centuries
  - PHIL 1033 The Primary Concerns of Philosophy (TCCN: PHIL 1301)
  - PHIL 2033 Ethics (TCCN: PHIL2306)
  - PHIL 2133 Political Philosophy (TCCN: PHIL2307)
  - PHIL 2213 Eastern Philosophy & Religion
  - PHIL 2223 Feminist Philosophy
  - PHIL 2333 Philosophy of Religion (TCCN: PHIL2321)
  - SPAN 1134 Elementary Spanish I (TCCN: SPAN 1411)
- **Creative Arts - 3 semester hours**
  - ART 1413 Art Appreciation (TCCN: ARTS 1301)
  - MCOM 2213 Appreciation of Film (TCCN: COMM 2366)
  - MUSC 1033 Music Appreciation (TCCN: MUSI 1306)
  - MUSC 2733 Intro to Western & World Music
  - THEA 1503 Appreciation of Theatre (TCCN: DRAM 1310)
  - THEA 2423 Dramatic Analysis
- **American History - 6 semester hours**
  - HIST 1133 Survey of American History to 1865 (TCCN: HIST 1301)
  - HIST 1233 Survey of American History since 1865 (TCCN: HIST 1302)

**CONTINUED**

BASIC CORE (42 Sem. Hrs.)	Cr Hrs	Transferred Credits & Substitutions	
		Course Prefix & #	Institution
<b>COMMUNICATION</b>			
ENGL 1123 or 1143	3		
Select one from attached list	3		
<b>MATHEMATICS</b>			
College Level Math	3		
<b>SCIENCE</b>			
Select one from attached list.	4		
Select one from attached list.	4		
<b>LANGUAGE, PHILOSOPHY, &amp; CULTURE</b>			
Select one from attached list.	3		
<b>CREATIVE ARTS</b>			
Select one from attached list.	3		
<b>AMERICAN HISTORY</b>			
HIST 1133 Amer. History to 1865	3		
HIST 1233 Amer. History since 1865	3		
<b>GOVERNMENT/POLITICAL SCIENCE</b>			
POLS 1333 American Government	3	MUST BE FROM	A TX SCHOOL
POLS 1433 American Government	3		
<b>SOCIAL &amp; BEHAVIORAL SCIENCE</b>			
Select one from attached list.	3		
<b>COMPONENT AREA</b>			
Cultural & Global Understanding			
Select one from attached list.	3		
Undergraduate Inquiry & Creativity			
Select one from attached list.	3		
<input type="checkbox"/> CORE COMPLETE	<b>SUB-TOTAL</b>	<b>42</b>	



# The BSRS Degree Plan-Basic Core 3

- **Government & Political Science - 6 semester hours**
  - POLS 1333 American Government - must be taken from a Texas institution.
  - POLS 1433 American Government
- **Social & Behavioral Sciences - 3 semester hours**
  - PSYC 1103 General Psychology (TCCN: PSYC 2301)
  - SOCL 1133 Introductory Sociology (TCCN: SOCI 1301)
- **Component Area - 6 semester hours**
  - Cultural & Global Understanding - 3 semester hours
    - EDUC 2013 School & Society (TCCN: EDUC 1301)
    - FREN 1234 Elementary French II (TCCN: FREN 1412)
    - GERM 1234 Elementary German II (TCCN: GERM 1412)
    - HSHS 1013 Global Health & Wellness
    - HUMN 2013. Humanities: The Ancient World
    - HUMN 2023 Humanities: Medieval Cultures
    - HUMN 2033 Humanities: Renaissance through Realism
    - HUMN 2043 Mid-19th through 20th Centuries
    - INTS 2503 Introduction to Global Studies
    - LATS 2503 Introduction to Latin American Studies
    - MCOM 1233 Introduction to Mass Communication (TCCN: COMM 1307)
    - MCOM 2523 The Internet & Society
    - MUSC 2733 Intro to Western & World Music
    - POLS 2523 Foundations of Government & Politics (TCCN: GOVT 2304)
    - SOCL 2233 Global Social Problems (TCCN: SOCI 1306)
    - SPAN 1234 Elementary Spanish II (TCCN: SPAN 1412)
    - WGST 2503 Intro to Women's & Gender Studies
  - Undergraduate Inquiry & Creativity - 3 semester hours
    - ART 1613 Ceramics for Non-Majors
    - BUAD 1033 Foundations of Business (TCCN: BUSI 1301)
    - COUN 2143 Human Diversity
    - ENGL 2123 Rhetoric, Visuals & Infographics
    - MCOM 2833 Web Site Design
    - MWSU 2003 Creative Inquiry: Interdisciplinary Thinking
    - SCIE 2103 Understanding Science, Engineering & Tech
    - SOCL 1143 Sociological Inquiry
    - THEA 1103 Acting for Non-Majors
    - THEA 2103 Playwrights & Scientists: Interesting Bedfellows

BASIC CORE (42 Sem. Hrs.)	Cr Hrs	Transferred Credits & Substitutions	
		Course Prefix & #	Institution
<b>COMMUNICATION</b>			
ENGL 1123 or 1143	3		
Select one from attached list	3		
<b>MATHEMATICS</b>			
College Level Math	3		
<b>SCIENCE</b>			
Select one from attached list.	4		
Select one from attached list.	4		
<b>LANGUAGE, PHILOSOPHY, &amp; CULTURE</b>			
Select one from attached list.	3		
<b>CREATIVE ARTS</b>			
Select one from attached list.	3		
<b>AMERICAN HISTORY</b>			
HIST 1133 Amer. History to 1885	3		
HIST 1233 Amer. History since 1885	3		
<b>GOVERNMENT/POLITICAL SCIENCE</b>			
POLS 1333 American Government	3	MUST BE FROM	A TX SCHOOL
POLS 1433 American Government	3		
<b>SOCIAL &amp; BEHAVIORAL SCIENCE</b>			
Select one from attached list.	3		
<b>COMPONENT AREA</b>			
Cultural & Global Understanding			
Select one from attached list.	3		
Undergraduate Inquiry & Creativity			
Select one from attached list.	3		
<b>□ CORE COMPLETE SUB-TOTAL</b>	<b>42</b>		



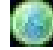
# ADDITIONAL DEGREE REQUIREMENTS:

- All students are **required** to fulfill the Writing Proficiency Exam requirement to graduate.
- RADS 3503 and RADS 4913 have been approved as substitutes for the WPE.
- Students successfully completing both courses starting Spring 2022 will be exempt from taking the WPE.





# Registering for Classes

- **Internet (via the MSU portal system )**
  - Contact your academic advisor on the acceptance letter. Most prefer e-mail. Be sure to include your full name and MSU ID number (M-number).
  - Request that the advising hold be removed (this needs to be done every semester). EAB Navigate is an easy way to contact your advisor.
  - **ACADEMIC ADVISOR'S TIP:** For your first registration at **Midwestern, we will hold a slot in each of two courses to ensure will have courses to enroll yourself in. We hold two courses for new BSRS students.**
  - For subsequent terms, assuming you are currently enrolled at MSU, you will be eligible to participate in early registration for the upcoming term and you are encouraged to do so as our courses fill quickly. You **MUST** contact your advisor each semester to have your advising hold removed before you can register.
  - Please go to [my.msutexas.edu](http://my.msutexas.edu) to register for courses. Once logged in click the WebWorld link 





# Your Courses at MSU

- Your courses will be offered via the Internet with the *Desire2Learn (D2L)* learning system which is also accessed from the portal by clicking the D2L link.
- Most courses will use a textbook (please check the **MSU bookstore** for textbooks required for your courses)
- Your internet courses will supply supplemental course materials within the course, referred to as:
  - “course content”
  - “course notes”
  - “study guide”
- Your courses may include all or some of the following learning activities:
  - Review activities
  - Discussion boards
  - Dropbox assignments
  - Quizzes, tests, unit exams
  - Proctored final exams – Most courses will use the included software in D2L (Respondus Monitor and Lockdown Browser) at no extra cost to you. Others may use an online proctoring service called ProctorU. The cost is based on the length of the exam with **most costing \$25.00 per exam**. Both of these proctoring methods **require a webcam & 2-way audio** (headset recommended).



# Desire2Learn

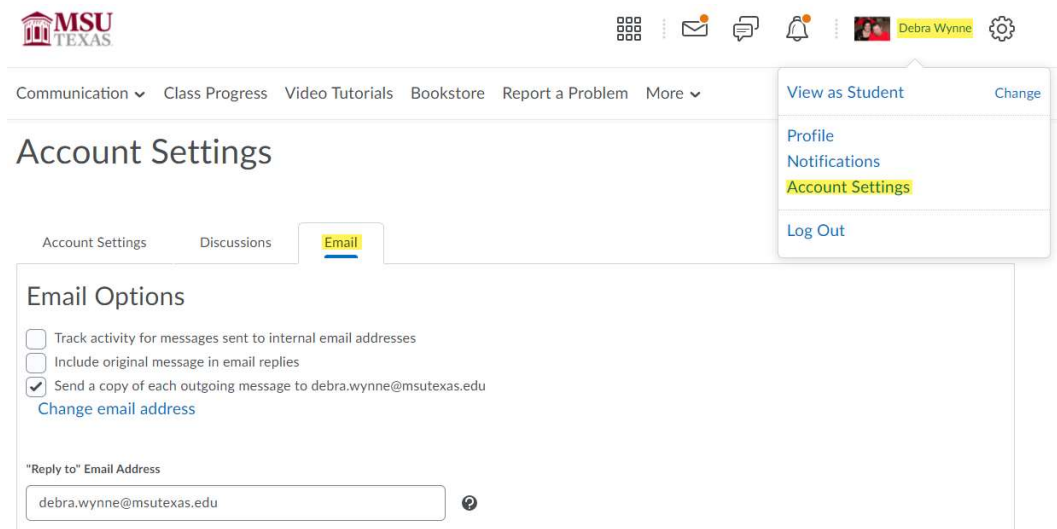
- D2L should be used in either Google Chrome or Mozilla Firefox browsers. Students are encouraged to have both browsers installed on their computers.

The screenshot shows the Desire2Learn user interface. At the top left is the MSU Texas logo. To the right of the logo are several icons: a grid, an envelope, a speech bubble, a bell, a profile picture of Debra Wynne, and a gear icon. Below these icons is a navigation bar with the following items: 'Communication', 'Class Progress', 'Video Tutorials', 'Bookstore', 'Report a Problem', and 'More'. The main content area features a large banner image of a desk with a laptop, a smartphone, and a clipboard, with the text 'Midwestern State University' overlaid. Below the banner are three main sections: 'News', 'My Courses', and 'Calendar'. The 'News' section contains the text 'There is no news to display.' The 'My Courses' section has tabs for 'All' and 'Pinned', and shows three course thumbnails. The 'Calendar' section shows the date 'Thursday, November 18, 2021' and the text 'There are no events to display.' At the bottom right, there is a 'Help' link.



# Course Communications

- All course communications with students will utilize your MSU e-mail account and/or the D2L e-mail system. This account will be created automatically for you when you register for classes.
- Visit the student email page for instructions on accessing this account.
- You can forward your email from your MSU student email account and your D2L e-mail account to your personal email account. We highly recommend you do this in order to get all emails from your instructors.
  - To forward your D2L e-mail:
    - Click your name found in the top-right corner and select “Account Settings” (highlighted in yellow).
    - Select the E-mail tab
    - Configure your e-mail as you like
    - While you’re in there you can also configure your other account settings and notifications.





# Welcome to MSU!!

- **Congratulations** on completing the online orientation for MSU's BSRS Program. If you should have any questions about the program, please call 1(866)575-4305 (toll-free) or (940) 397-4337 and ask to speak with your academic advisor.

*You will need to contact your advisor to remove your advising hold and to let them know this orientation has been completed. Your advising hold will not be removed until your advisor has this verification.*

Please click the **Distance Learning Orientation** link and choose the semester you will begin taking courses. Scroll down on that page to see the blue Online Orientation Module link.

The passcode is **1922**